

Converting Colors

$Yxy(50.1110, 0.3445, 0.3539)$

Have a look what the booklet for
Yxy(50.1110, 0.3445, 0.3539)
contains.

Yxy(50.1110, 0.3445, 0.3539)	3
Conversions	4
Details	6
Harmonies	12
Previews	24
Color Blindness Simulation	27
CSS Examples	30

Color

Yxy(50.1110, 0.3445, 0.3539)

Conversions

Conversions Part 1

Format	Color
Hex	CBB9A5
RGB	203, 185, 165
RGB Percent	80%, 73%, 65%
CMY	0.2037, 0.2746, 0.3529
CMYK	0.00, 0.09, 0.19, 0.20
HSL	32°, 27%, 72%
HSV	32°, 19%, 80%
XYZ	48.7800, 50.1110, 42.7055
YIQ	188.1020, 17.1480, -2.4040

Conversions

Conversions Part 2

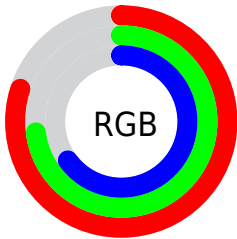
Format	Color
RYB	199, 203, 165
Decimal	13351333
CIELab	76.14, 3.17, 12.46
CIELCh	76, 12.856, 75.709
Yxy	50.1110, 0.3445, 0.3539
Android (android.graphics.Color)	4291541413 (0xFFCBB9A5)
YUV	188.1020, -11.3893, 13.0655
Hunter-Lab	70.7891, -0.8786, 13.7840

Details

The Yxy color **50.1110, 0.3445, 0.3539** is a light color, and the websafe version is hex **CCCCCC**. A complement of this color would be **46.2143, 0.2834, 0.3028**, and the grayscale version is **50.4136, 0.3127, 0.3290**.

A 20% lighter version of the original color is **89.3379, 0.3352, 0.3498**, and **24.0843, 0.3540, 0.3609** is the 20% darker color. If you saturate the color by 10%, you get **45.5331, 0.3647, 0.3680**, and if you desaturate by 10%, it is **55.0844, 0.3266, 0.3403**.

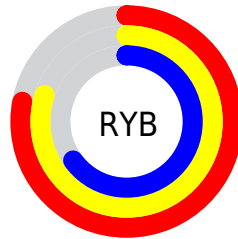
Distribution



Red (80%)

Green (73%)

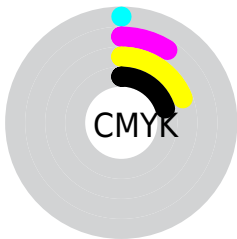
Blue (65%)



Red (78%)

Yellow (80%)

Blue (65%)

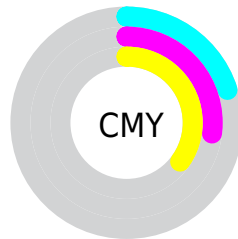


Cyan (0%)

Magenta (9%)

Yellow (19%)

Black (20%)



Cyan (20%)


Magenta (27%)


Yellow (35%)

Brightness & Saturation Gradients


These gradients show how the Yxy color 50.1110, 0.3445, 0.3539 changes by changing the brightness by 10 percent. The first figure shows a shift by +10% for each color and the second figure -10%.


Similar to the brightness gradients but the following saturation gradients show a change of the Yxy color 50.1110, 0.3445, 0.3539 by changing the saturation by 10% instead.

 50.1110, 0.3445,
0.3539


 50.1110, 0.3445,
0.3539


387.0999, 0.3288,
0.3417

 35.5016, 0.3484,
0.3569


 90.3393, 0.3388,
0.3495

 24.0495, 0.3533,
0.3606


 116.7270, 0.3367,
0.3479

 15.3704, 0.3599,
0.3655


147.8096, 0.3348,
0.3465

 9.0797, 0.3689,
0.3721

183.9715, 0.3333,
0.3453

 4.7932, 0.3821,
0.3816

225.5971, 0.3319,
0.3442

 2.1265, 0.4030,
0.3961

273.0707, 0.3307,

 0.6794, 0.5156,

0.3433

0.4844

326.7769, 0.3297,
0.3425

0.0000, 0.0000,
0.0000

50.1110, 0.3445,
0.3539

50.1110, 0.3445,
0.3539

45.5331, 0.3647,
0.3680

55.0844, 0.3266,
0.3403

41.3331, 0.3872,
0.3820

60.4571, 0.3108,
0.3274

37.5017, 0.4116,
0.3954

66.2411, 0.2970,
0.3154

34.0267, 0.4376,
0.4071

72.4460, 0.2850,
0.3043

30.8948, 0.4640,
0.4159

78.3153, 0.2807,
0.3058

■ 28.0917, 0.4895,
0.4206

■ 83.9313, 0.2813,
0.3161

■ 25.6014, 0.5124,
0.4203

■ 89.8504, 0.2820,
0.3263

■ 23.4016, 0.5318,
0.4148

■ 91.4435, 0.2822,
0.3289

■ 23.1401, 0.5342,
0.4140

Harmonies

Analogous

The Analogous color harmony consists of three colors that are next to each other on the color wheel.



50.1110, 0.3473, 0.3417



50.1110, 0.3445, 0.3539



50.1110, 0.3331, 0.3598

Triad

The Triadic color harmony groups three colors that are evenly spaced from another and form a triangle on the color wheel.



50.1110, 0.3445, 0.3539



50.1110, 0.2856, 0.3304



50.1110, 0.3083, 0.3028

Complementary

The Complementary color scheme is a pair of colors which are on the opposite of each other on the color wheel.



50.1110, 0.3445, 0.3539



46.2143, 0.2834, 0.3028

Split Complementary

Split-complementary colors differ from the complementary color scheme. The scheme consists of three colors, the original color and two neighbors of the complement color.



50.1110, 0.2922, 0.2995



50.1110, 0.3445, 0.3539



50.1110, 0.2794, 0.3148

Square

The Square scheme is like the rectangle color scheme, but the four colors are evenly spaced on the color wheel.



50.1110, 0.3445, 0.3539



50.1110, 0.2990, 0.3462



50.1110, 0.2817, 0.3036



50.1110, 0.3260, 0.3127

Rectangle

The Rectangle color scheme consists of four colors that form a rectangle on the color wheel.



50.1110, 0.3445, 0.3539



50.1110, 0.3222, 0.3590



50.1110, 0.2817, 0.3036



50.1110, 0.3025, 0.3009

Sweetspot

The Sweet Spot groups the original color and five complimentary colors.



50.1132, 0.3445, 0.3539



94.5048, 0.3222, 0.3368



43.0549, 0.3320, 0.3062



20.1031, 0.3233, 0.3377



0.0000, 0.0000, 0.0000



21.4041, 0.3127, 0.3290

Same Dimension

The Same Dimension uses a secret algorithm to generate beautiful new colors.



50.1132, 0.3445, 0.3539



81.0630, 0.3514, 0.3589



58.0670, 0.3401, 0.3753



12.1722, 0.3277, 0.3412



14.9022, 0.5322, 0.4156



0.9202, 0.5044, 0.4377

Inverse Universe

The Inverse Universe completely reimagines the original color for something new.



46.2143, 0.2834, 0.3028



73.4923, 0.2776, 0.2972



39.2992, 0.2825, 0.2783



11.7081, 0.2983, 0.3165



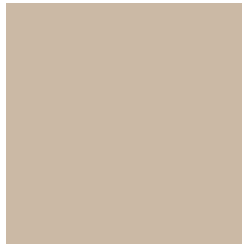
8.2949, 0.1753, 0.1509



0.5795, 0.1855, 0.1876

Previews

White Background



This preview shows how the Yxy color 50.1110, 0.3445, 0.3539 looks on a white background.

Color Contrast Check

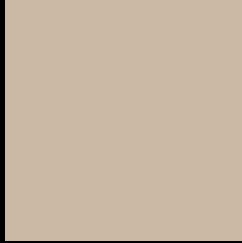
Large Text (above 18pt) WCAG AA × Fail

Any Text WCAG AA × Fail

Large Text (above 18pt) WCAG AAA × Fail

Any Text WCAG AAA × Fail

Black Background



This preview shows how the Yxy color 50.1110, 0.3445, 0.3539 looks on a black background.

Color Contrast Check

Large Text (above 18pt) WCAG AA ✓ Pass

Any Text WCAG AA ✓ Pass

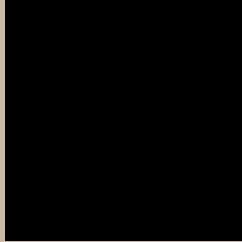
Large Text (above 18pt) WCAG AAA ✓ Pass

Any Text WCAG AAA ✓ Pass

If you want to check with other color combinations, try the [Color Contrast Checker](#).

Yxy 50.1110, 0.3445, 0.3539

Background



This preview shows how black text looks on a background with the Yxy color 50.1110, 0.3445, 0.3539.



This preview shows how white text looks on a background with the Yxy color 50.1110, 0.3445, 0.3539.

Color Blindness Simulation

Color vision deficiency is a very complex topic, and I could not describe the different causes any better than Wikipedia does, so if you want to learn more, you should check out their [article about color blindness](#).

Dichromacy



Original Color

50.1110, 0.3445, 0.3539

Protanopia

50.0296, 0.3371, 0.3556

Deuteranopia

50.0971, 0.3544, 0.3472



Tritanopia

50.2533, 0.3238, 0.3122

Trichromacy



Original Color

50.1110, 0.3445, 0.3539

Protanomaly

50.0131, 0.3399, 0.3542

Deuteranomaly

49.9107, 0.3506, 0.3486

Tritanomaly

50.0384, 0.3318, 0.3266

Monochromacy



Original Color

50.1110, 0.3445, 0.3539

Achromatopsia

50.2886, 0.3127, 0.3290

Achromatomaly

50.1734, 0.3232, 0.3378

CSS Examples

Text

The CSS property to change the color of the text to Yxy 50.1110, 0.3445, 0.3539 is called "color". The color property can be set on classes, ids or directly on the HTML element.

This example shows how text in the color `rgb(203, 185, 165)` looks like.

```
.text, #text, p{  
    color:rgb(203, 185, 165)  
}
```

If you want to add a text shadow in that color use the text-shadow property, you can generate a text shadow directly with our [CSS Text Shadow Generator](#).

Here you see how black text with a 4 pixel rgb(203, 185, 165) colored shadow looks like.

```
.shadow{ text-shadow: 4px 4px 2px rgb(203, 185, 165) }
```

Border

The CSS property to change the border of an element to Yxy 50.1110, 0.3445, 0.3539 is called "border". The border property can be set on classes, ids or directly on the HTML element.

This example shows the color as border, it can be applied via the CSS property "border" or "border-color".

```
.border, #border, table{ border:4px solid rgb(203, 185, 165) }
```

If only the border color should be changed use the property `border-color`.

```
.border{ border-color:rgb(203, 185, 165) }
```

If you want to add a box shadow in that color use:

Here you see how a box with a 4 pixel `rgb(203, 185, 165)` colored shadow looks like.

```
.boxshadow{ -moz-box-shadow:4px 4px 4px  
4px rgb(203, 185, 165); -webkit-box-  
shadow:4px 4px 4px 4px rgb(203, 185, 165);  
box-shadow:4px 4px 4px 4px rgb(203, 185,  
165) }
```


Background

The CSS property to change the background color of an element to Yxy 50.1110, 0.3445, 0.3539 is called "background". The background property can be set on classes, ids or directly on the HTML element.

```
.background, #background, body{  
background: rgb(203, 185, 165) }
```

If only the background color should be changed can be used:

```
.background{ background-color: rgb(203,  
185, 165) }
```

This example shows the color as background, it is applied via the CSS property "background".

To optimize and compress your CSS code, you can use our [online CSS compressor and optimizer](#) based on csstidy. If you want to create a linear or radial gradient as background or border, check our [CSS Gradient Generator](#).

Hey! You found this booklet interesting? Support Converting Colors with the new Membership Option!

The pro membership hides all ads, plus gives you double the colors in the color bucket, and more awesome pro features!

[Learn more, Memberships starting at \\$2.50/m!](#)

**Follow me
on Twitter!**

@ConvertingColor