

Converting Colors

$Yxy(50.1533, 0.3571, 0.3373)$

Have a look what the booklet for
Yxy(50.1533, 0.3571, 0.3373)
contains.

Yxy(50.1532, 0.3571, 0.3374)	3
<i>Conversions</i>	4
<i>Details</i>	6
<i>Harmonies</i>	12
<i>Previews</i>	24
<i>Color Blindness Simulation</i>	27
<i>CSS Examples</i>	30

Color

Yxy(50.1532, 0.3571, 0.3374)

Conversions

Conversions Part 1

Format	Color
Hex	DDB2AB
RGB	221, 178, 171
RGB Percent	87%, 70%, 67%
CMY	0.1335, 0.3019, 0.3294
CMYK	0.00, 0.19, 0.23, 0.13
HSL	8°, 42%, 77%
HSV	8°, 23%, 87%
XYZ	53.0815, 50.1532, 45.4114
YIQ	190.0590, 27.8750, 6.9390

Conversions

Conversions Part 2

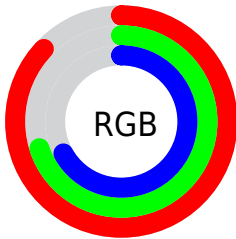
Format	Color
R _Y B	221, 179, 171
Decimal	14529195
CIE Lab	76.16, 14.50, 9.47
CIE LCh	76, 17.320, 33.162
Yxy	50.1532, 0.3571, 0.3374
Android (android.graphics.Color)	4292719275 (0xFFDDB2AB)
YUV	190.0590, -9.3961, 27.1353
Hunter-Lab	70.8189, 9.8596, 11.5546

Details

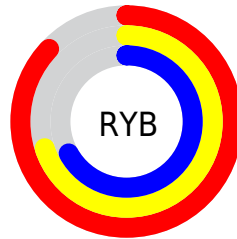
The Yxy color $50.1532, 0.3571, 0.3374$ is a light color, and the websafe version is hex $CC9999$. A complement of this color would be $61.9422, 0.2787, 0.3204$, and the grayscale version is $51.5712, 0.3127, 0.3290$.

A 20% lighter version of the original color is $85.5966, 0.3322, 0.3370$, and $23.9985, 0.3693, 0.3386$ is the 20% darker color. If you saturate the color by 10%, you get $42.3390, 0.3840, 0.3414$, and if you desaturate by 10%, it is $59.1593, 0.3350, 0.3335$.

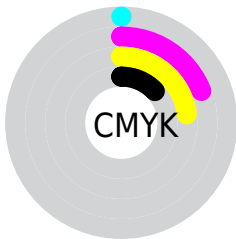
Distribution



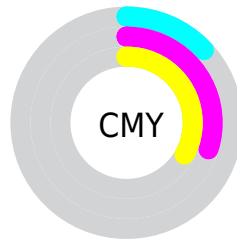
- Red (87%)
- Green (70%)
- Blue (67%)



- Red (87%)
- Yellow (70%)
- Blue (67%)



- Cyan (0%)
- Magenta (19%)
- Yellow (23%)
- Black (13%)





- Cyan (13%)
- Magenta (30%)
- Yellow (33%)

Brightness & Saturation Gradients


These gradients show how the Yxy color 50.1532, 0.3571, 0.3374 changes by changing the brightness by 10 percent. The first figure shows a shift by +10% for each color and the second figure -10%.


Similar to the brightness gradients but the following saturation gradients show a change of the Yxy color 50.1532, 0.3571, 0.3374 by changing the saturation by 10% instead.


 50.1532, 0.3571,
0.3374

 50.1532, 0.3571,
0.3374


387.2647, 0.3350,
0.3336

 35.5351, 0.3626,
0.3382


 90.4018, 0.3491,
0.3361

 24.0754, 0.3696,
0.3392


116.8012, 0.3461,
0.3356

 15.3896, 0.3789,
0.3404


147.8964, 0.3435,
0.3352

 9.0932, 0.3918,
0.3417

184.0719, 0.3413,
0.3348

 4.8021, 0.4108,
0.3433

225.7121, 0.3394,
0.3344

 2.1316, 0.4415,
0.3446

273.2014, 0.3378,

 0.6823, 0.5704,

0.3341

0.3842

326.9241, 0.3363,
0.3339

0.0000, 0.0000,
0.0000

50.1532, 0.3571,
0.3374

50.1532, 0.3571,
0.3374

42.3390, 0.3840,
0.3414

59.1593, 0.3350,
0.3335

35.6601, 0.4164,
0.3452

69.3971, 0.3169,
0.3299

30.0654, 0.4542,
0.3485

80.9132, 0.3021,
0.3266

25.4975, 0.4965,
0.3506

93.4639, 0.2922,
0.3279

21.8934, 0.5404,
0.3507

94.1064, 0.2923,
0.3289

■ 19.1832, 0.5811,
0.3483

■ 17.2870, 0.6127,
0.3434

■ 16.3483, 0.6285,
0.3391

Harmonies

Analogous

The Analogous color harmony consists of three colors that are next to each other on the color wheel.



50.1532, 0.3429, 0.3175



50.1532, 0.3571, 0.3374



50.1532, 0.3588, 0.3560

Triad

The Triadic color harmony groups three colors that are evenly spaced from another and form a triangle on the color wheel.



50.1532, 0.3571, 0.3374



50.1532, 0.3036, 0.3598



50.1532, 0.2782, 0.2905

Complementary

The Complementary color scheme is a pair of colors which are on the opposite of each other on the color wheel.



50.1532, 0.3571, 0.3374



61.9422, 0.2787, 0.3204

Split Complementary

Split-complementary colors differ from the complementary color scheme. The scheme consists of three colors, the original color and two neighbors of the complement color.



50.1532, 0.2686, 0.3000



50.1532, 0.3571, 0.3374



50.1532, 0.2829, 0.3401

Square

The Square scheme is like the rectangle color scheme, but the four colors are evenly spaced on the color wheel.



50.1532, 0.3571, 0.3374



50.1532, 0.3273, 0.3702



50.1532, 0.2703, 0.3179



50.1532, 0.2970, 0.2911

Rectangle

The Rectangle color scheme consists of four colors that form a rectangle on the color wheel.



50.1532, 0.3571, 0.3374



50.1532, 0.3526, 0.3653



50.1532, 0.2703, 0.3179



50.1532, 0.2738, 0.2926

Sweetspot

The Sweet Spot groups the original color and five complimentary colors.



50.1555, 0.3571, 0.3374



89.5018, 0.3245, 0.3315



49.3635, 0.3208, 0.2800



18.9721, 0.3256, 0.3317



0.0000, 0.0000, 0.0000



21.4041, 0.3127, 0.3290

Same Dimension

The Same Dimension uses a secret algorithm to generate beautiful new colors.



50.1555, 0.3571, 0.3374



64.2107, 0.3689, 0.3392



60.8508, 0.3510, 0.3655



13.3450, 0.3288, 0.3324



9.5980, 0.6266, 0.3406



0.7185, 0.6001, 0.3617

Inverse Universe

The Inverse Universe completely reimagines the original color for something new.



61.9422, 0.2787, 0.3204



83.1820, 0.2722, 0.3185



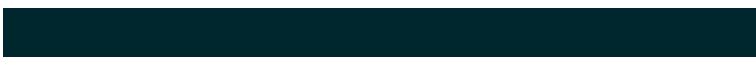
50.4103, 0.2763, 0.2896



14.5014, 0.2982, 0.3256



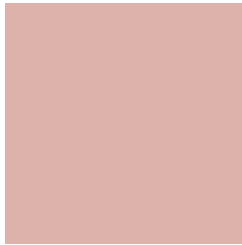
24.5413, 0.2123, 0.2841



1.6774, 0.2145, 0.2921

Previews

White Background



This preview shows how the Yxy color 50.1532, 0.3571, 0.3374 looks on a white background.

Color Contrast Check

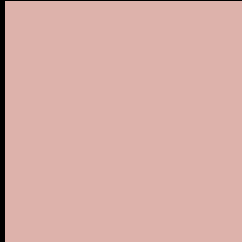
Large Text (above 18pt) WCAG AA × Fail

Any Text WCAG AA × Fail

Large Text (above 18pt) WCAG AAA × Fail

Any Text WCAG AAA × Fail

Black Background



This preview shows how the Yxy color 50.1532, 0.3571, 0.3374 looks on a black background.

Color Contrast Check

Large Text (above 18pt) WCAG AA ✓ Pass

Any Text WCAG AA ✓ Pass

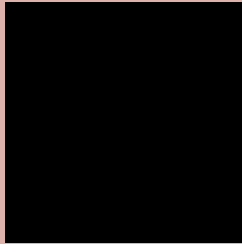
Large Text (above 18pt) WCAG AAA ✓ Pass

Any Text WCAG AAA ✓ Pass

If you want to check with other color combinations, try the [Color Contrast Checker](#).

Yxy 50.1532, 0.3571, 0.3374

Background



This preview shows how black text looks on a background with the Yxy color 50.1532, 0.3571, 0.3374.



This preview shows how white text looks on a background with the Yxy color 50.1532, 0.3571, 0.3374.

Color Blindness Simulation

Color vision deficiency is a very complex topic, and I could not describe the different causes any better than Wikipedia does, so if you want to learn more, you should check out their [article about color blindness](#).

Dichromacy



Original Color

50.1532, 0.3571, 0.3374

Protanopia

50.1446, 0.3273, 0.3429

Deuteranopia

50.0962, 0.3501, 0.3424



Tritanopia

50.0220, 0.3437, 0.3129

Trichromacy



Original Color

50.1532, 0.3571, 0.3374

Protanomaly

50.1743, 0.3381, 0.3414

Deuteranomaly

50.1437, 0.3530, 0.3411

Tritanomaly

49.9577, 0.3488, 0.3221

Monochromacy



Original Color

50.1532, 0.3571, 0.3374

Achromatopsia

51.4918, 0.3127, 0.3290

Achromatomaly

50.9542, 0.3278, 0.3327

CSS Examples

Text

The CSS property to change the color of the text to Yxy 50.1532, 0.3571, 0.3374 is called "color". The color property can be set on classes, ids or directly on the HTML element.

This example shows how text in the color `rgb(221, 178, 171)` looks like.

```
.text, #text, p{  
    color:rgb(221, 178, 171)  
}
```

If you want to add a text shadow in that color use the text-shadow property, you can generate a text shadow directly with our [CSS Text Shadow Generator](#).

Here you see how black text with a 4 pixel rgb(221, 178, 171) colored shadow looks like.

```
.shadow{ text-shadow: 4px 4px 2px rgb(221, 178, 171) }
```

Border

The CSS property to change the border of an element to Yxy 50.1532, 0.3571, 0.3374 is called "border". The border property can be set on classes, ids or directly on the HTML element.

This example shows the color as border, it can be applied via the CSS property "border" or "border-color".

```
.border, #border, table{ border:4px solid rgb(221, 178, 171) }
```

If only the border color should be changed use the property `border-color`.

```
.border{ border-color:rgb(221, 178, 171) }
```

If you want to add a box shadow in that color use:

Here you see how a box with a 4 pixel `rgb(221, 178, 171)` colored shadow looks like.

```
.boxshadow{ -moz-box-shadow:4px 4px 4px  
4px rgb(221, 178, 171); -webkit-box-  
shadow:4px 4px 4px 4px rgb(221, 178, 171);  
box-shadow:4px 4px 4px 4px rgb(221, 178,  
171) }
```


Background

The CSS property to change the background color of an element to Yxy 50.1532, 0.3571, 0.3374 is called "background". The background property can be set on classes, ids or directly on the HTML element.

```
.background, #background, body{  
background: rgb(221, 178, 171) }
```

If only the background color should be changed can be used:

```
.background{ background-color: rgb(221,  
178, 171) }
```

This example shows the color as background, it is applied via the CSS property "background".

To optimize and compress your CSS code, you can use our [online CSS compressor and optimizer](#) based on csstidy. If you want to create a linear or radial gradient as background or border, check our [CSS Gradient Generator](#).

Hey! You found this booklet interesting? Support Converting Colors with the new Membership Option!

The pro membership hides all ads, plus gives you double the colors in the color bucket, and more awesome pro features!

[Learn more, Memberships starting at \\$2.50/m!](#)

**Follow me
on Twitter!**

@ConvertingColor