

Converting Colors

Yxy(50.1823, 0.3333, 0.3315)

Have a look what the booklet for
Yxy(50.1823, 0.3333, 0.3315)
contains.

Yxy(50.1823, 0.3333, 0.3315)	3
Conversions	4
Details	6
Harmonies	12
Previews	24
Color Blindness Simulation	27
CSS Examples	30

Color

Yxy(50.1823, 0.3333, 0.3315)

Conversions

Conversions Part 1

Format	Color
Hex	CDB7B5
RGB	205, 183, 181
RGB Percent	80%, 72%, 71%
CMY	0.1960, 0.2824, 0.2902
CMYK	0.00, 0.11, 0.12, 0.20
HSL	5°, 19%, 76%
HSV	5°, 12%, 80%
XYZ	50.4548, 50.1823, 50.7424
YIQ	189.3500, 13.7540, 4.0420

Conversions

Conversions Part 2

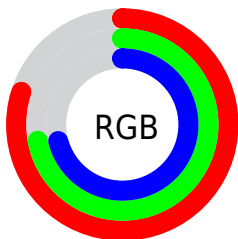
Format	Color
R _Y B	205, 183, 181
Decimal	13481909
CIE Lab	76.18, 7.52, 3.87
CIE LCh	76, 8.454, 27.262
Yxy	50.1823, 0.3333, 0.3315
Android (android.graphics.Color)	4291671989 (0xFFCDB7B5)
YUV	189.3500, -4.1165, 13.7251
Hunter-Lab	70.8395, 3.1660, 7.1181

Details

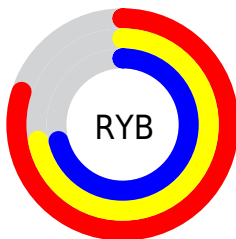
The Yxy color **50.1823, 0.3333, 0.3315** is a light color, and the websafe version is hex **CCCCCC**. A complement of this color would be **56.9552, 0.2949, 0.3265**, and the grayscale version is **51.1202, 0.3127, 0.3290**.

A 20% lighter version of the original color is **89.1074, 0.3246, 0.3310**, and **24.1031, 0.3398, 0.3324** is the 20% darker color. If you saturate the color by 10%, you get **42.1607, 0.3554, 0.3338**, and if you desaturate by 10%, it is **59.3677, 0.3154, 0.3294**.

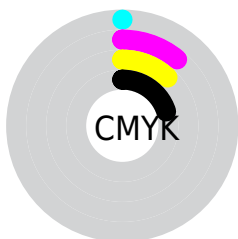
Distribution



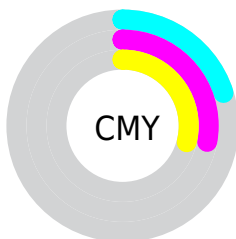
- Red (80%)
- Green (72%)
- Blue (71%)



- Red (80%)
- Yellow (72%)
- Blue (71%)



- Cyan (0%)
- Magenta (11%)
- Yellow (12%)
- Black (20%)





- Cyan (20%)
- Magenta (28%)
- Yellow (29%)

Brightness & Saturation Gradients


These gradients show how the Yxy color 50.1823, 0.3333, 0.3315 changes by changing the brightness by 10 percent. The first figure shows a shift by +10% for each color and the second figure -10%.


Similar to the brightness gradients but the following saturation gradients show a change of the Yxy color 50.1823, 0.3333, 0.3315 by changing the saturation by 10% instead.


 50.1823, 0.3333,
0.3315

 50.1823, 0.3333,
0.3315


387.3784, 0.3231,
0.3304

 35.5583, 0.3358,
0.3318


 90.4449, 0.3296,
0.3311

 24.0932, 0.3391,
0.3321


116.8523, 0.3282,
0.3309

 15.4028, 0.3433,
0.3325


147.9563, 0.3270,
0.3308

 9.1026, 0.3493,
0.3330

184.1412, 0.3260,
0.3307

 4.8081, 0.3581,
0.3336

225.7915, 0.3251,
0.3306

 2.1351, 0.3724,
0.3345

273.2915, 0.3244,

 0.6843, 0.4185,

0.3305

0.3434

327.0257, 0.3237,
0.3304

0.0000, 0.0000,
0.0000

50.1823, 0.3333,
0.3315

50.1823, 0.3333,
0.3315

42.1607, 0.3554,
0.3338

59.3677, 0.3154,
0.3294

35.2501, 0.3825,
0.3362

69.7538, 0.3009,
0.3274

29.4036, 0.4154,
0.3385

81.3841, 0.2891,
0.3256

24.5681, 0.4542,
0.3405

91.7221, 0.2833,
0.3289

20.6863, 0.4980,
0.3417

■ 17.6950, 0.5437,
0.3417

■ 15.5233, 0.5857,
0.3402

■ 14.0895, 0.6177,
0.3371

■ 13.3846, 0.6344,
0.3345

Harmonies

Analogous

The Analogous color harmony consists of three colors that are next to each other on the color wheel.



50.1823, 0.3256, 0.3216



50.1823, 0.3333, 0.3315



50.1823, 0.3354, 0.3410

Triad

The Triadic color harmony groups three colors that are evenly spaced from another and form a triangle on the color wheel.



50.1823, 0.3333, 0.3315



50.1823, 0.3107, 0.3451



50.1823, 0.2943, 0.3106

Complementary

The Complementary color scheme is a pair of colors which are on the opposite of each other on the color wheel.



50.1823, 0.3333, 0.3315



56.9552, 0.2949, 0.3265

Split Complementary

Split-complementary colors differ from the complementary color scheme. The scheme consists of three colors, the original color and two neighbors of the complement color.



50.1823, 0.2905, 0.3165



50.1823, 0.3333, 0.3315



50.1823, 0.2999, 0.3365

Square

The Square scheme is like the rectangle color scheme, but the four colors are evenly spaced on the color wheel.



50.1823, 0.3333, 0.3315



50.1823, 0.3222, 0.3491



50.1823, 0.2926, 0.3260



50.1823, 0.3030, 0.3097

Rectangle

The Rectangle color scheme consists of four colors that form a rectangle on the color wheel.



50.1823, 0.3333, 0.3315



50.1823, 0.3333, 0.3458



50.1823, 0.2926, 0.3260



50.1823, 0.2925, 0.3121

Sweetspot

The Sweet Spot groups the original color and five complimentary colors.



50.1845, 0.3333, 0.3315



93.5382, 0.3193, 0.3298



50.3618, 0.3153, 0.3023



19.7686, 0.3206, 0.3300



0.0000, 0.0000, 0.0000



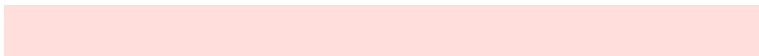
21.4041, 0.3127, 0.3290

Same Dimension

The Same Dimension uses a secret algorithm to generate beautiful new colors.



50.1845, 0.3333, 0.3315



78.7761, 0.3383, 0.3321



55.1748, 0.3316, 0.3455



11.3611, 0.3288, 0.3310



8.3884, 0.6331, 0.3355



0.4859, 0.6117, 0.3525

Inverse Universe

The Inverse Universe completely reimagines the original color for something new.



56.9552, 0.2949, 0.3265



91.9667, 0.2912, 0.3259



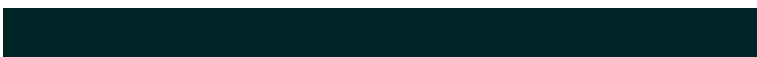
51.6729, 0.2946, 0.3120



12.5612, 0.2984, 0.3270



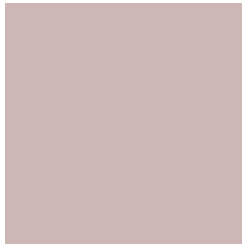
25.1886, 0.2175, 0.3030



1.3477, 0.2190, 0.3084

Previews

White Background



This preview shows how the Yxy color 50.1823, 0.3333, 0.3315 looks on a white background.

Color Contrast Check

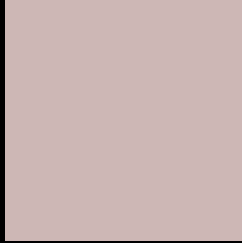
Large Text (above 18pt) WCAG AA × Fail

Any Text WCAG AA × Fail

Large Text (above 18pt) WCAG AAA × Fail

Any Text WCAG AAA × Fail

Black Background



This preview shows how the Yxy color 50.1823, 0.3333, 0.3315 looks on a black background.

Color Contrast Check

Large Text (above 18pt) WCAG AA ✓ Pass

Any Text WCAG AA ✓ Pass

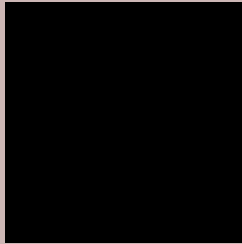
Large Text (above 18pt) WCAG AAA ✓ Pass

Any Text WCAG AAA ✓ Pass

If you want to check with other color combinations, try the [Color Contrast Checker](#).

Yxy 50.1823, 0.3333, 0.3315

Background



This preview shows how black text looks on a background with the Yxy color 50.1823, 0.3333, 0.3315.



This preview shows how white text looks on a background with the Yxy color 50.1823, 0.3333, 0.3315.

Color Blindness Simulation

Color vision deficiency is a very complex topic, and I could not describe the different causes any better than Wikipedia does, so if you want to learn more, you should check out their [article about color blindness](#).

Dichromacy



Original Color

50.1823, 0.3333, 0.3315

Protanopia

50.1660, 0.3200, 0.3341

Deuteranopia

50.3474, 0.3369, 0.3303



Tritanopia

50.2533, 0.3238, 0.3122

Trichromacy



Original Color

50.1823, 0.3333, 0.3315

Protanomaly

50.3655, 0.3251, 0.3340

Deuteranomaly

50.2020, 0.3361, 0.3303

Tritanomaly

50.2954, 0.3269, 0.3194

Monochromacy



Original Color

50.1823, 0.3333, 0.3315

Achromatopsia

50.8881, 0.3127, 0.3290

Achromatomaly

50.6879, 0.3202, 0.3303

CSS Examples

Text

The CSS property to change the color of the text to Yxy 50.1823, 0.3333, 0.3315 is called "color". The color property can be set on classes, ids or directly on the HTML element.

This example shows how text in the color `rgb(205, 183, 181)` looks like.

```
.text, #text, p{  
    color:rgb(205, 183, 181)  
}
```

If you want to add a text shadow in that color use the text-shadow property, you can generate a text shadow directly with our [CSS Text Shadow Generator](#).

Here you see how black text with a 4 pixel rgb(205, 183, 181) colored shadow looks like.

```
.shadow{ text-shadow: 4px 4px 2px rgb(205, 183, 181) }
```

Border

The CSS property to change the border of an element to Yxy 50.1823, 0.3333, 0.3315 is called "border". The border property can be set on classes, ids or directly on the HTML element.

This example shows the color as border, it can be applied via the CSS property "border" or "border-color".

```
.border, #border, table{ border:4px solid rgb(205, 183, 181) }
```

If only the border color should be changed use the property `border-color`.

```
.border{ border-color:rgb(205, 183, 181) }
```

If you want to add a box shadow in that color use:

Here you see how a box with a 4 pixel `rgb(205, 183, 181)` colored shadow looks like.

```
.boxshadow{ -moz-box-shadow:4px 4px 4px 4px rgb(205, 183, 181); -webkit-box-shadow:4px 4px 4px 4px rgb(205, 183, 181); box-shadow:4px 4px 4px 4px rgb(205, 183, 181) }
```


Background

The CSS property to change the background color of an element to Yxy 50.1823, 0.3333, 0.3315 is called "background". The background property can be set on classes, ids or directly on the HTML element.

```
.background, #background, body{  
background: rgb(205, 183, 181) }
```

If only the background color should be changed can be used:

```
.background{ background-color: rgb(205,  
183, 181) }
```

This example shows the color as background, it is applied via the CSS property "background".

To optimize and compress your CSS code, you can use our [online CSS compressor and optimizer](#) based on csstidy. If you want to create a linear or radial gradient as background or border, check our [CSS Gradient Generator](#).

Hey! You found this booklet interesting? Support Converting Colors with the new Membership Option!

The pro membership hides all ads, plus gives you double the colors in the color bucket, and more awesome pro features!

[Learn more, Memberships starting at \\$2.50/m!](#)

**Follow me
on Twitter!**

@ConvertingColor