

# Converting Colors

Yxy(50.2771, 0.3342, 0.3453)

Have a look what the booklet for  
Yxy(50.2771, 0.3342, 0.3453)  
contains.

<b>Yxy(50.2771, 0.3342, 0.3453)</b> .....	3
<b>Conversions</b> .....	4
<b>Details</b> .....	6
<b>Harmonies</b> .....	12
<b>Previews</b> .....	24
<b>Color Blindness Simulation</b> .....	27
<b>CSS Examples</b> .....	30

# Color

**Yxy(50.2771, 0.3342, 0.3453)**

# Conversions

## Conversions Part 1

Format	Color
Hex	C7BAAD
RGB	199, 186, 173
RGB Percent	78%, 73%, 68%
CMY	0.2195, 0.2706, 0.3216
CMYK	0.00, 0.07, 0.13, 0.22
HSL	30°, 19%, 73%
HSV	30°, 13%, 78%
XYZ	48.6609, 50.2771, 46.6661
YIQ	188.4050, 11.9210, -1.2870

# Conversions

## Conversions Part 2

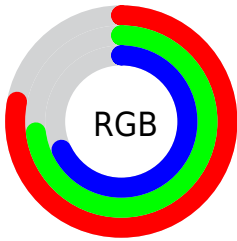
Format	Color
R <sub>Y</sub> B	199, 199, 173
Decimal	13089453
CIE Lab	76.24, 2.41, 8.24
CIE LCh	76, 8.586, 73.704
Yxy	50.2771, 0.3342, 0.3453
Android (android.graphics.Color)	4291279533 (0xFFC7BAAD)
YUV	188.4050, -7.5947, 9.2918
Hunter-Lab	70.9063, -1.5869, 10.6135

# Details

The Yxy color  $50.2771, 0.3342, 0.3453$  is a light color, and the websafe version is hex `CCCCCC`. A complement of this color would be  $48.1370, 0.2925, 0.3121$ , and the grayscale version is  $50.5737, 0.3127, 0.3290$ .

A 20% lighter version of the original color is  $90.3657, 0.3300, 0.3428$ , and  $24.1753, 0.3398, 0.3493$  is the 20% darker color. If you saturate the color by 10%, you get  $45.5124, 0.3533, 0.3585$ , and if you desaturate by 10%, it is  $55.4539, 0.3174, 0.3327$ .

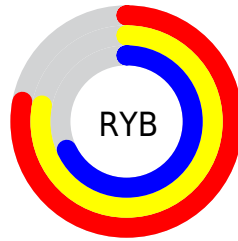
# Distribution



Red (78%)

Green (73%)

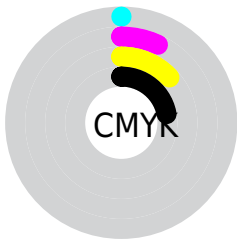
Blue (68%)



Red (78%)

Yellow (78%)

Blue (68%)

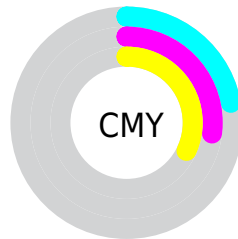


Cyan (0%)

Magenta (7%)

Yellow (13%)

Black (22%)



Cyan (22%)

Magenta (27%)


Yellow (32%)


# Brightness & Saturation Gradients

These gradients show how the Yxy color 50.2771, 0.3342, 0.3453 changes by changing the brightness by 10 percent. The first figure shows a shift by +10% for each color and the second figure -10%.


Similar to the brightness gradients but the following saturation gradients show a change of the Yxy color 50.2771, 0.3342, 0.3453 by changing the saturation by 10% instead.





 50.2771, 0.3342,  
0.3453

 50.2771, 0.3342,  
0.3453

387.7486, 0.3236,  
0.3373

 35.6336, 0.3368,  
0.3472


 90.5853, 0.3304,  
0.3424

 24.1514, 0.3402,  
0.3497


117.0188, 0.3289,  
0.3413

 15.4459, 0.3446,  
0.3530


148.1511, 0.3277,  
0.3404

 9.1330, 0.3507,  
0.3574

184.3667, 0.3266,  
0.3396

 4.8280, 0.3598,  
0.3639

226.0498, 0.3257,  
0.3389

 2.1467, 0.3743,  
0.3740

273.5849, 0.3249,

 0.6907, 0.4522,

0.3383

0.4366

327.3563, 0.3242,  
0.3378

0.0000, 0.0000,  
0.0000

50.2771, 0.3342,  
0.3453

50.2771, 0.3342,  
0.3453

45.5124, 0.3533,  
0.3585

55.4539, 0.3174,  
0.3327

41.1420, 0.3748,  
0.3720

61.0465, 0.3028,  
0.3209

37.1567, 0.3987,  
0.3852

67.0673, 0.2901,  
0.3100

33.5442, 0.4247,  
0.3973

73.5260, 0.2790,  
0.3000

30.2915, 0.4520,  
0.4074

79.2526, 0.2785,  
0.3084

■ 27.3845, 0.4794,  
0.4140

■ 85.1456, 0.2793,  
0.3192

■ 24.8079, 0.5052,  
0.4161

■ 90.8873, 0.2800,  
0.3289

■ 22.5441, 0.5278,  
0.4128

■ 21.1458, 0.5416,  
0.4081

# Harmonies

## Analogous

The Analogous color harmony consists of three colors that are next to each other on the color wheel.



50.2771, 0.3356, 0.3370



50.2771, 0.3342, 0.3453



50.2771, 0.3270, 0.3494

# Triad

The Triadic color harmony groups three colors that are evenly spaced from another and form a triangle on the color wheel.



50.2771, 0.3342, 0.3453



50.2771, 0.2950, 0.3308



50.2771, 0.3091, 0.3110

# Complementary

The Complementary color scheme is a pair of colors which are on the opposite of each other on the color wheel.



50.2771, 0.3342, 0.3453



48.1370, 0.2925, 0.3121

# Split Complementary

Split-complementary colors differ from the complementary color scheme. The scheme consists of three colors, the original color and two neighbors of the complement color.



50.2771, 0.2984, 0.3092



50.2771, 0.3342, 0.3453



50.2771, 0.2904, 0.3203

# Square

The Square scheme is like the rectangle color scheme, but the four colors are evenly spaced on the color wheel.



50.2771, 0.3342, 0.3453



50.2771, 0.3044, 0.3410



50.2771, 0.2916, 0.3125



50.2771, 0.3209, 0.3175



# Rectangle

The Rectangle color scheme consists of four colors that form a rectangle on the color wheel.



50.2771, 0.3342, 0.3453



50.2771, 0.3199, 0.3490



50.2771, 0.2916, 0.3125



50.2771, 0.3052, 0.3099

# Sweetspot

The Sweet Spot groups the original color and five complimentary colors.



50.2793, 0.3342, 0.3453



96.1455, 0.3190, 0.3339



45.5925, 0.3247, 0.3123



20.4268, 0.3202, 0.3349



0.0000, 0.0000, 0.0000



21.4041, 0.3127, 0.3290

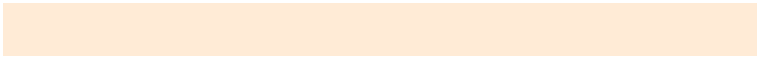


# Same Dimension

The Same Dimension uses a secret algorithm to generate beautiful new colors.



50.2793, 0.3342, 0.3453



85.2985, 0.3399, 0.3494



55.8285, 0.3322, 0.3605



11.4973, 0.3277, 0.3406



13.7667, 0.5395, 0.4098



0.7967, 0.5080, 0.4349

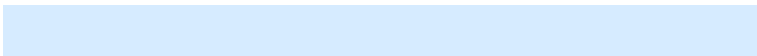


# Inverse Universe

The Inverse Universe completely reimagines the original color for something new.



48.1370, 0.2925, 0.3121



80.7488, 0.2875, 0.3077



43.0555, 0.2921, 0.2954



11.1501, 0.2983, 0.3172



8.6413, 0.1777, 0.1595

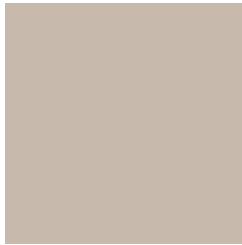


0.5540, 0.1882, 0.1974



# Previews

## White Background



This preview shows how the Yxy color 50.2771, 0.3342, 0.3453 looks on a white background.

## Color Contrast Check

Large Text (above 18pt) WCAG AA × Fail

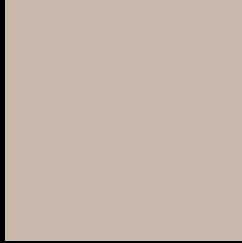
Any Text WCAG AA × Fail

Large Text (above 18pt) WCAG AAA × Fail

Any Text WCAG AAA × Fail



# Black Background



This preview shows how the Yxy color 50.2771, 0.3342, 0.3453 looks on a black background.

## Color Contrast Check

Large Text (above 18pt) WCAG AA ✓ Pass

Any Text WCAG AA ✓ Pass

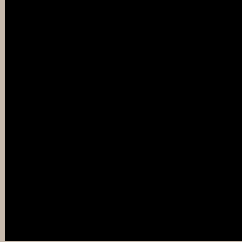
Large Text (above 18pt) WCAG AAA ✓ Pass

Any Text WCAG AAA ✓ Pass

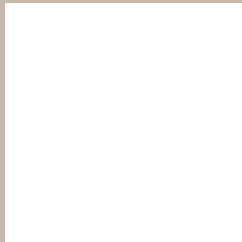
If you want to check with other color combinations, try the [Color Contrast Checker](#).

**Yxy 50.2771, 0.3342, 0.3453**

## Background



This preview shows how black text looks on a background with the Yxy color 50.2771, 0.3342, 0.3453.



This preview shows how white text looks on a background with the Yxy color 50.2771, 0.3342, 0.3453.

# Color Blindness Simulation

Color vision deficiency is a very complex topic, and I could not describe the different causes any better than Wikipedia does, so if you want to learn more, you should check out their [article about color blindness](#).

## Dichromacy



### Original Color

50.2771, 0.3342, 0.3453

### Protanopia

50.1987, 0.3297, 0.3454

### Deuteranopia

49.9526, 0.3448, 0.3376



## Tritanopia

50.0437, 0.3178, 0.3108

# Trichromacy



## Original Color

50.2771, 0.3342, 0.3453

## Protanomaly

50.3324, 0.3306, 0.3454

## Deuteranomaly

50.1884, 0.3409, 0.3401

## Tritanomaly

49.9153, 0.3241, 0.3229

# Monochromacy



## Original Color

50.2771, 0.3342, 0.3453

## Achromatopsia

50.2886, 0.3127, 0.3290

## Achromatomaly

50.1660, 0.3200, 0.3341

# CSS Examples

## Text

The CSS property to change the color of the text to Yxy 50.2771, 0.3342, 0.3453 is called "color". The color property can be set on classes, ids or directly on the HTML element.

This example shows how text in the color `rgb(199, 186, 173)` looks like.

```
.text, #text, p{  
    color:rgb(199, 186, 173)  
}
```

If you want to add a text shadow in that color use the text-shadow property, you can generate a text shadow directly with our [CSS Text Shadow Generator](#).

Here you see how black text with a 4 pixel rgb(199, 186, 173) colored shadow looks like.

```
.shadow{ text-shadow: 4px 4px 2px rgb(199, 186, 173) }
```

## Border

The CSS property to change the border of an element to Yxy 50.2771, 0.3342, 0.3453 is called "border". The border property can be set on classes, ids or directly on the HTML element.

This example shows the color as border, it can be applied via the CSS property "border" or "border-color".

```
.border, #border, table{ border:4px solid rgb(199, 186, 173) }
```

If only the border color should be changed use the property `border-color`.

```
.border{ border-color:rgb(199, 186, 173) }
```

If you want to add a box shadow in that color use:

Here you see how a box with a 4 pixel `rgb(199, 186, 173)` colored shadow looks like.

```
.boxshadow{ -moz-box-shadow:4px 4px 4px  
4px rgb(199, 186, 173); -webkit-box-  
shadow:4px 4px 4px 4px rgb(199, 186, 173);  
box-shadow:4px 4px 4px 4px rgb(199, 186,  
173) }
```



# Background

The CSS property to change the background color of an element to Yxy 50.2771, 0.3342, 0.3453 is called "background". The background property can be set on classes, ids or directly on the HTML element.

```
.background, #background, body{  
background: rgb(199, 186, 173) }
```

If only the background color should be changed can be used:

```
.background{ background-color: rgb(199,  
186, 173) }
```

This example shows the color as background, it is applied via the CSS property "background".

To optimize and compress your CSS code, you can use our [online CSS compressor and optimizer](#) based on csstidy. If you want to create a linear or radial gradient as background or border, check our [CSS Gradient Generator](#).

Hey! You found this booklet interesting? Support Converting Colors with the new Membership Option!

The pro membership hides all ads, plus gives you double the colors in the color bucket, and more awesome pro features!

**[Learn more, Memberships starting at \\$2.50/m!](#)**

**Follow me  
on Twitter!**

@ConvertingColor