

Converting Colors

Yxy(50.4014, 0.3748, 0.3697)

Have a look what the booklet for
Yxy(50.4014, 0.3748, 0.3697)
contains.

Yxy(50.2144, 0.3755, 0.3697)	3
Conversions	4
Details	6
Harmonies	12
Previews	24
Color Blindness Simulation	27
CSS Examples	30

Color

Yxy(50.2144, 0.3755, 0.3697)

Conversions

Conversions Part 1

Format	Color
Hex	DBB593
RGB	219, 181, 147
RGB Percent	86%, 71%, 58%
CMY	0.1412, 0.2902, 0.4235
CMYK	0.00, 0.17, 0.33, 0.14
HSL	28°, 50%, 72%
HSV	28°, 33%, 86%
XYZ	51.0022, 50.2144, 34.6081
YIQ	188.4860, 33.5620, -2.5180

Conversions

Conversions Part 2

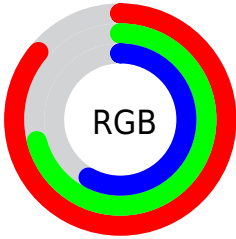
Format	Color
R _Y B	219, 211, 147
Decimal	14398867
CIE Lab	76.20, 8.89, 22.48
CIE LCh	76, 24.170, 68.421
Yxy	50.2144, 0.3755, 0.3697
Android (android.graphics.Color)	4292588947 (0xFFDDBB593)
YUV	188.4860, -20.4526, 26.7608
Hunter-Lab	70.8621, 4.4646, 20.6470

Details

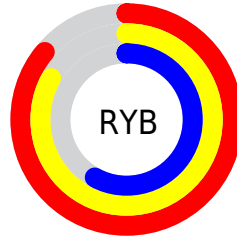
The Yxy color **50.2144, 0.3755, 0.3697** is a light color, and the websafe version is hex **FFCC99**. A complement of this color would be **46.0097, 0.2605, 0.2843**, and the grayscale version is **50.6856, 0.3127, 0.3290**.

A 20% lighter version of the original color is **86.0454, 0.3483, 0.3651**, and **24.0694, 0.3933, 0.3796** is the 20% darker color. If you saturate the color by 10%, you get **45.0872, 0.4002, 0.3823**, and if you desaturate by 10%, it is **55.8668, 0.3535, 0.3568**.

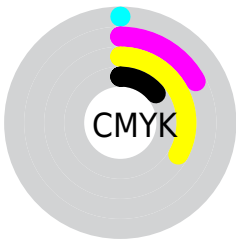
Distribution



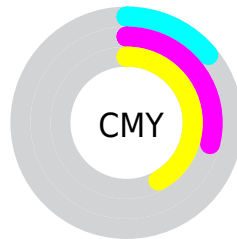
- Red (86%)
- Green (71%)
- Blue (58%)



- Red (86%)
- Yellow (83%)
- Blue (58%)



- Cyan (0%)
- Magenta (17%)
- Yellow (33%)
- Black (14%)





- Cyan (14%)
- Magenta (29%)
- Yellow (42%)

Brightness & Saturation Gradients


These gradients show how the Yxy color 50.2144, 0.3755, 0.3697 changes by changing the brightness by 10 percent. The first figure shows a shift by +10% for each color and the second figure -10%.

Similar to the brightness gradients but the following saturation gradients show a change of the Yxy color 50.2144, 0.3755, 0.3697 by changing the saturation by 10% instead.


 50.2144, 0.3755,
0.3697

 50.2144, 0.3755,
0.3697


387.5038, 0.3444,
0.3503

 35.5838, 0.3831,
0.3742


 90.4925, 0.3643,
0.3629

 24.1129, 0.3928,
0.3797


 116.9087, 0.3601,
0.3603

 15.4174, 0.4053,
0.3867


148.0223, 0.3565,
0.3580

 9.1129, 0.4224,
0.3957

184.2175, 0.3534,
0.3561

 4.8149, 0.4465,
0.4071

225.8789, 0.3507,
0.3544

 2.1390, 0.4928,
0.4304

273.3908, 0.3483,

 0.6865, 0.5589,

0.3529

0.4411

327.1377, 0.3463,
0.3515

0.0000, 0.0000,
0.0000

50.2144, 0.3755,
0.3697

50.2144, 0.3755,
0.3697

45.0872, 0.4002,
0.3823

55.8668, 0.3535,
0.3568

40.4615, 0.4272,
0.3939

62.0535, 0.3341,
0.3443

36.3216, 0.4557,
0.4033

68.7919, 0.3172,
0.3323

32.6482, 0.4846,
0.4094

76.0966, 0.3025,
0.3211

29.4199, 0.5119,
0.4108

83.8844, 0.2906,
0.3123

■ 26.6130, 0.5358,
0.4067

■ 90.8597, 0.2910,
0.3242

■ 24.8483, 0.5505,
0.4011

■ 93.7990, 0.2911,
0.3289

Harmonies

Analogous

The Analogous color harmony consists of three colors that are next to each other on the color wheel.



50.2144, 0.3767, 0.3447



50.2144, 0.3755, 0.3697



50.2144, 0.3568, 0.3857

Triad

The Triadic color harmony groups three colors that are evenly spaced from another and form a triangle on the color wheel.



50.2144, 0.3755, 0.3697



50.2144, 0.2673, 0.3387



50.2144, 0.2960, 0.2787

Complementary

The Complementary color scheme is a pair of colors which are on the opposite of each other on the color wheel.



50.2144, 0.3755, 0.3697



46.0097, 0.2605, 0.2843

Split Complementary

Split-complementary colors differ from the complementary color scheme. The scheme consists of three colors, the original color and two neighbors of the complement color.



50.2144, 0.2686, 0.2752



50.2144, 0.3755, 0.3697



50.2144, 0.2527, 0.3078

Square

The Square scheme is like the rectangle color scheme, but the four colors are evenly spaced on the color wheel.



50.2144, 0.3755, 0.3697



50.2144, 0.2941, 0.3684



50.2144, 0.2532, 0.2851



50.2144, 0.3294, 0.2939

Rectangle

The Rectangle color scheme consists of four colors that form a rectangle on the color wheel.



50.2144, 0.3755, 0.3697



50.2144, 0.3376, 0.3879



50.2144, 0.2532, 0.2851



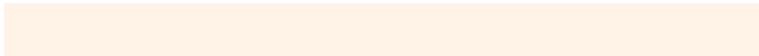
50.2144, 0.2859, 0.2761

Sweetspot

The Sweet Spot groups the original color and five complimentary colors.



50.2167, 0.3755, 0.3697



90.1791, 0.3291, 0.3409



39.4466, 0.3483, 0.2836



19.0204, 0.3316, 0.3426



0.0000, 0.0000, 0.0000



21.4041, 0.3127, 0.3290

Same Dimension

The Same Dimension uses a secret algorithm to generate beautiful new colors.



50.2167, 0.3755, 0.3697



66.1339, 0.3911, 0.3779



66.5819, 0.3629, 0.4082



14.0608, 0.3280, 0.3401



14.9507, 0.5481, 0.4030



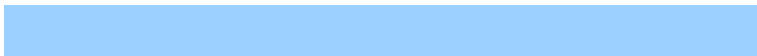
1.1402, 0.5217, 0.4240

Inverse Universe

The Inverse Universe completely reimagines the original color for something new.



46.0097, 0.2605, 0.2843



59.3660, 0.2502, 0.2738



32.9395, 0.2544, 0.2352



13.7487, 0.2982, 0.3177



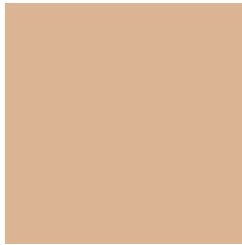
10.5991, 0.1800, 0.1678



0.8588, 0.1878, 0.1962

Previews

White Background



This preview shows how the Yxy color 50.2144, 0.3755, 0.3697 looks on a white background.

Color Contrast Check

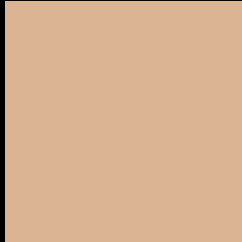
Large Text (above 18pt) WCAG AA × Fail

Any Text WCAG AA × Fail

Large Text (above 18pt) WCAG AAA × Fail

Any Text WCAG AAA × Fail

Black Background



This preview shows how the Yxy color 50.2144, 0.3755, 0.3697 looks on a black background.

Color Contrast Check

Large Text (above 18pt) WCAG AA ✓ Pass

Any Text WCAG AA ✓ Pass

Large Text (above 18pt) WCAG AAA ✓ Pass

Any Text WCAG AAA ✓ Pass

If you want to check with other color combinations, try the [Color Contrast Checker](#).

Yxy 50.2144, 0.3755, 0.3697

Background



This preview shows how black text looks on a background with the Yxy color 50.2144, 0.3755, 0.3697.



This preview shows how white text looks on a background with the Yxy color 50.2144, 0.3755, 0.3697.

Color Blindness Simulation

Color vision deficiency is a very complex topic, and I could not describe the different causes any better than Wikipedia does, so if you want to learn more, you should check out their [article about color blindness](#).

Dichromacy



Original Color

50.2144, 0.3755, 0.3697

Protanopia

50.4478, 0.3534, 0.3769

Deuteranopia

50.3700, 0.3764, 0.3696



Tritanopia

50.1814, 0.3446, 0.3129

Trichromacy



Original Color

50.2144, 0.3755, 0.3697

Protanomaly

50.1332, 0.3615, 0.3736

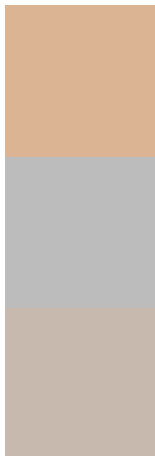
Deuteranomaly

50.3700, 0.3764, 0.3696

Tritanomaly

50.0299, 0.3556, 0.3326

Monochromacy



Original Color

50.2144, 0.3755, 0.3697

Achromatopsia

50.2886, 0.3127, 0.3290

Achromatomaly

49.8572, 0.3343, 0.3441

CSS Examples

Text

The CSS property to change the color of the text to Yxy 50.2144, 0.3755, 0.3697 is called "color". The color property can be set on classes, ids or directly on the HTML element.

This example shows how text in the color `rgb(219, 181, 147)` looks like.

```
.text, #text, p{  
    color:rgb(219, 181, 147)  
}
```

If you want to add a text shadow in that color use the text-shadow property, you can generate a text shadow directly with our [CSS Text Shadow Generator](#).

Here you see how black text with a 4 pixel rgb(219, 181, 147) colored shadow looks like.

```
.shadow{ text-shadow: 4px 4px 2px rgb(219, 181, 147) }
```

Border

The CSS property to change the border of an element to Yxy 50.2144, 0.3755, 0.3697 is called "border". The border property can be set on classes, ids or directly on the HTML element.

This example shows the color as border, it can be applied via the CSS property "border" or "border-color".

```
.border, #border, table{ border:4px solid rgb(219, 181, 147) }
```

If only the border color should be changed use the property `border-color`.

```
.border{ border-color:rgb(219, 181, 147) }
```

If you want to add a box shadow in that color use:

Here you see how a box with a 4 pixel `rgb(219, 181, 147)` colored shadow looks like.

```
.boxshadow{ -moz-box-shadow:4px 4px 4px  
4px rgb(219, 181, 147); -webkit-box-  
shadow:4px 4px 4px 4px rgb(219, 181, 147);  
box-shadow:4px 4px 4px 4px rgb(219, 181,  
147) }
```


Background

The CSS property to change the background color of an element to Yxy 50.2144, 0.3755, 0.3697 is called "background". The background property can be set on classes, ids or directly on the HTML element.

```
.background, #background, body{  
background: rgb(219, 181, 147) }
```

If only the background color should be changed can be used:

```
.background{ background-color: rgb(219,  
181, 147) }
```

This example shows the color as background, it is applied via the CSS property "background".

To optimize and compress your CSS code, you can use our [online CSS compressor and optimizer](#) based on csstidy. If you want to create a linear or radial gradient as background or border, check our [CSS Gradient Generator](#).

Hey! You found this booklet interesting? Support Converting Colors with the new Membership Option!

The pro membership hides all ads, plus gives you double the colors in the color bucket, and more awesome pro features!

[Learn more, Memberships starting at \\$2.50/m!](#)

**Follow me
on Twitter!**

@ConvertingColor