

Converting Colors

$Yxy(50.4277, 0.3359, 0.3327)$

Have a look what the booklet for
Yxy(50.4277, 0.3359, 0.3327)
contains.

Yxy(50.4277, 0.3359, 0.3327)	3
Conversions	4
Details	6
Harmonies	12
Previews	24
Color Blindness Simulation	27
CSS Examples	30

Color

Yxy(50.4277, 0.3359, 0.3327)

Conversions

Conversions Part 1

Format	Color
Hex	CFB7B4
RGB	207, 183, 180
RGB Percent	81%, 72%, 71%
CMY	0.1881, 0.2824, 0.2941
CMYK	0.00, 0.12, 0.13, 0.19
HSL	7°, 22%, 76%
HSV	7°, 13%, 81%
XYZ	50.9127, 50.4277, 50.2307
YIQ	189.8340, 15.2670, 4.1550

Conversions

Conversions Part 2

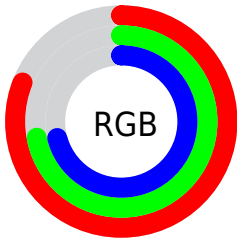
Format	Color
R _Y B	207, 183, 180
Decimal	13612980
CIE Lab	76.33, 8.09, 4.65
CIE LCh	76, 9.333, 29.913
Yxy	50.4277, 0.3359, 0.3327
Android (android.graphics.Color)	4291803060 (0xFFCFB7B4)
YUV	189.8340, -4.8482, 15.0546
Hunter-Lab	71.0125, 3.7046, 7.7700

Details

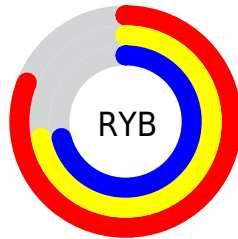
The Yxy color $50.4277, 0.3359, 0.3327$ is a light color, and the websafe version is hex `CCCCCC`. A complement of this color would be $57.4227, 0.2928, 0.3253$, and the grayscale version is $51.4176, 0.3127, 0.3290$.

A 20% lighter version of the original color is $89.0491, 0.3253, 0.3320$, and $24.1730, 0.3421, 0.3340$ is the 20% darker color. If you saturate the color by 10%, you get $42.5419, 0.3584, 0.3358$, and if you desaturate by 10%, it is $59.4381, 0.3176, 0.3298$.

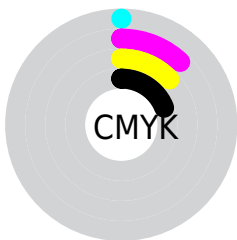
Distribution



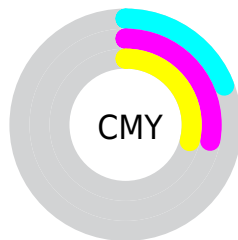
- Red (81%)
- Green (72%)
- Blue (71%)



- Red (81%)
- Yellow (72%)
- Blue (71%)



- Cyan (0%)
- Magenta (12%)
- Yellow (13%)
- Black (19%)




- Cyan (19%)
- Magenta (28%)
- Yellow (29%)

Brightness & Saturation Gradients


These gradients show how the Yxy color 50.4277, 0.3359, 0.3327 changes by changing the brightness by 10 percent. The first figure shows a shift by +10% for each color and the second figure -10%.


Similar to the brightness gradients but the following saturation gradients show a change of the Yxy color 50.4277, 0.3359, 0.3327 by changing the saturation by 10% instead.


 50.4277, 0.3359,
0.3327

 50.4277, 0.3359,
0.3327


388.3362, 0.3244,
0.3310

 35.7534, 0.3387,
0.3331


 90.8083, 0.3317,
0.3321

 24.2438, 0.3424,
0.3336


117.2833, 0.3302,
0.3319

 15.5145, 0.3472,
0.3342


148.4606, 0.3288,
0.3317

 9.1813, 0.3539,
0.3350

184.7247, 0.3277,
0.3315

 4.8596, 0.3638,
0.3360

226.4599, 0.3267,
0.3313

 2.1651, 0.3798,
0.3374

274.0506, 0.3259,

 0.7009, 0.4314,

0.3312

0.3500

327.8812, 0.3251,
0.3311

0.0000, 0.0000,
0.0000

50.4277, 0.3359,
0.3327

50.4277, 0.3359,
0.3327

42.5419, 0.3584,
0.3358

59.4381, 0.3176,
0.3298

35.7301, 0.3858,
0.3389

69.6077, 0.3027,
0.3272

29.9477, 0.4189,
0.3419

80.9782, 0.2905,
0.3248

25.1447, 0.4577,
0.3444

92.0116, 0.2844,
0.3289

21.2665, 0.5010,
0.3460

■ 18.2534, 0.5458,
0.3459

■ 16.0387, 0.5866,
0.3437

■ 14.5455, 0.6174,
0.3396

■ 13.8796, 0.6317,
0.3366

Harmonies

Analogous

The Analogous color harmony consists of three colors that are next to each other on the color wheel.



50.4277, 0.3278, 0.3217



50.4277, 0.3359, 0.3327



50.4277, 0.3376, 0.3430

Triad

The Triadic color harmony groups three colors that are evenly spaced from another and form a triangle on the color wheel.



50.4277, 0.3359, 0.3327



50.4277, 0.3093, 0.3461



50.4277, 0.2931, 0.3084

Complementary

The Complementary color scheme is a pair of colors which are on the opposite of each other on the color wheel.



50.4277, 0.3359, 0.3327



57.4227, 0.2928, 0.3253

Split Complementary

Split-complementary colors differ from the complementary color scheme. The scheme consists of three colors, the original color and two neighbors of the complement color.



50.4277, 0.2884, 0.3144



50.4277, 0.3359, 0.3327



50.4277, 0.2977, 0.3363

Square

The Square scheme is like the rectangle color scheme, but the four colors are evenly spaced on the color wheel.



50.4277, 0.3359, 0.3327



50.4277, 0.3221, 0.3510



50.4277, 0.2901, 0.3246



50.4277, 0.3031, 0.3079

Rectangle

The Rectangle color scheme consists of four colors that form a rectangle on the color wheel.



50.4277, 0.3359, 0.3327



50.4277, 0.3349, 0.3480



50.4277, 0.2901, 0.3246



50.4277, 0.2909, 0.3099

Sweetspot

The Sweet Spot groups the original color and five complimentary colors.



50.4299, 0.3359, 0.3327



93.7075, 0.3192, 0.3301



50.2910, 0.3164, 0.3002



19.8113, 0.3205, 0.3303



0.0000, 0.0000, 0.0000



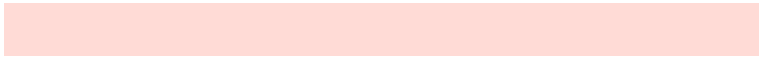
21.4041, 0.3127, 0.3290

Same Dimension

The Same Dimension uses a secret algorithm to generate beautiful new colors.



50.4299, 0.3359, 0.3327



76.6362, 0.3425, 0.3336



56.1493, 0.3338, 0.3485



12.0155, 0.3288, 0.3316



8.8100, 0.6302, 0.3378



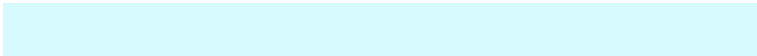
0.5652, 0.6050, 0.3579

Inverse Universe

The Inverse Universe completely reimagines the original color for something new.



57.4227, 0.2928, 0.3253



90.2235, 0.2882, 0.3243



51.3932, 0.2924, 0.3087



13.1746, 0.2983, 0.3264



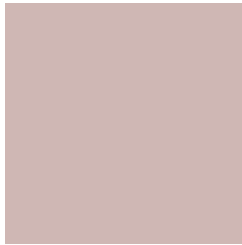
24.5565, 0.2150, 0.2941



1.4382, 0.2170, 0.3011

Previews

White Background



This preview shows how the Yxy color 50.4277, 0.3359, 0.3327 looks on a white background.

Color Contrast Check

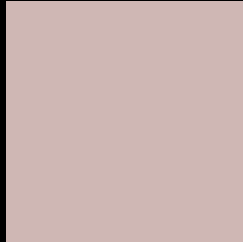
Large Text (above 18pt) WCAG AA × Fail

Any Text WCAG AA × Fail

Large Text (above 18pt) WCAG AAA × Fail

Any Text WCAG AAA × Fail

Black Background



This preview shows how the Yxy color 50.4277, 0.3359, 0.3327 looks on a black background.

Color Contrast Check

Large Text (above 18pt) WCAG AA ✓ Pass

Any Text WCAG AA ✓ Pass

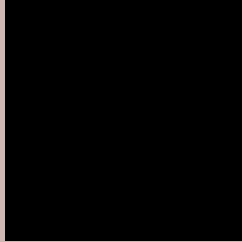
Large Text (above 18pt) WCAG AAA ✓ Pass

Any Text WCAG AAA ✓ Pass

If you want to check with other color combinations, try the [Color Contrast Checker](#).

Yxy 50.4277, 0.3359, 0.3327

Background



This preview shows how black text looks on a background with the Yxy color 50.4277, 0.3359, 0.3327.



This preview shows how white text looks on a background with the Yxy color 50.4277, 0.3359, 0.3327.

Color Blindness Simulation

Color vision deficiency is a very complex topic, and I could not describe the different causes any better than Wikipedia does, so if you want to learn more, you should check out their [article about color blindness](#).

Dichromacy



Original Color

50.4277, 0.3359, 0.3327

Protanopia

50.7228, 0.3208, 0.3353

Deuteranopia

50.4528, 0.3387, 0.3315



Tritanopia

50.5432, 0.3255, 0.3123

Trichromacy



Original Color

50.4277, 0.3359, 0.3327

Protanomaly

50.5010, 0.3260, 0.3340

Deuteranomaly

50.3065, 0.3378, 0.3315

Tritanomaly

50.5835, 0.3286, 0.3194

Monochromacy



Original Color

50.4277, 0.3359, 0.3327

Achromatopsia

51.4918, 0.3127, 0.3290

Achromatomaly

50.8216, 0.3210, 0.3303

CSS Examples

Text

The CSS property to change the color of the text to Yxy 50.4277, 0.3359, 0.3327 is called "color". The color property can be set on classes, ids or directly on the HTML element.

This example shows how text in the color `rgb(207, 183, 180)` looks like.

```
.text, #text, p{  
    color:rgb(207, 183, 180)  
}
```

If you want to add a text shadow in that color use the text-shadow property, you can generate a text shadow directly with our [CSS Text Shadow Generator](#).

Here you see how black text with a 4 pixel rgb(207, 183, 180) colored shadow looks like.

```
.shadow{ text-shadow: 4px 4px 2px rgb(207, 183, 180) }
```

Border

The CSS property to change the border of an element to Yxy 50.4277, 0.3359, 0.3327 is called "border". The border property can be set on classes, ids or directly on the HTML element.

This example shows the color as border, it can be applied via the CSS property "border" or "border-color".

```
.border, #border, table{ border:4px solid rgb(207, 183, 180) }
```

If only the border color should be changed use the property `border-color`.

```
.border{ border-color:rgb(207, 183, 180) }
```

If you want to add a box shadow in that color use:

Here you see how a box with a 4 pixel `rgb(207, 183, 180)` colored shadow looks like.

```
.boxshadow{ -moz-box-shadow:4px 4px 4px  
4px rgb(207, 183, 180); -webkit-box-  
shadow:4px 4px 4px 4px rgb(207, 183, 180);  
box-shadow:4px 4px 4px 4px rgb(207, 183,  
180) }
```


Background

The CSS property to change the background color of an element to Yxy 50.4277, 0.3359, 0.3327 is called "background". The background property can be set on classes, ids or directly on the HTML element.

```
.background, #background, body{  
background: rgb(207, 183, 180) }
```

If only the background color should be changed can be used:

```
.background{ background-color: rgb(207,  
183, 180) }
```

This example shows the color as background, it is applied via the CSS property "background".

To optimize and compress your CSS code, you can use our [online CSS compressor and optimizer](#) based on csstidy. If you want to create a linear or radial gradient as background or border, check our [CSS Gradient Generator](#).

Hey! You found this booklet interesting? Support Converting Colors with the new Membership Option!

The pro membership hides all ads, plus gives you double the colors in the color bucket, and more awesome pro features!

[Learn more, Memberships starting at \\$2.50/m!](#)

**Follow me
on Twitter!**

@ConvertingColor