

Converting Colors

$Y_{xy}(50.5133, 0.4265, 0.3555)$

Have a look what the booklet for
Yxy(50.5133, 0.4265, 0.3555)
contains.

Yxy(49.6750, 0.4235, 0.3555)	3
Conversions	4
Details	6
Harmonies	12
Previews	24
Color Blindness Simulation	27
CSS Examples	30

Color

Yxy(49.6750, 0.4235, 0.3555)

Conversions

Conversions Part 1

Format	Color
Hex	FFA48B
RGB	255, 164, 139
RGB Percent	100%, 64%, 55%
CMY	0.0000, 0.3568, 0.4550
CMYK	0.00, 0.36, 0.46, 0.00
HSL	13°, 100%, 77%
HSV	13°, 46%, 100%
XYZ	59.1768, 49.6750, 30.8809
YIQ	188.3590, 62.2610, 11.5170

Conversions

Conversions Part 2

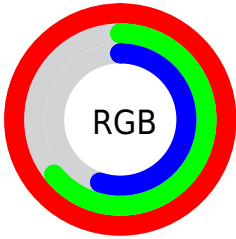
Format	Color
R _Y B	255, 171, 139
Decimal	16753803
CIE Lab	75.87, 30.96, 26.99
CIE LCh	76, 41.073, 41.084
Yxy	49.6750, 0.4235, 0.3555
Android (android.graphics.Color)	4294943883 (0xFFFFA48B)
YUV	188.3590, -24.3340, 58.4442
Hunter-Lab	70.4805, 26.5313, 23.3585

Details

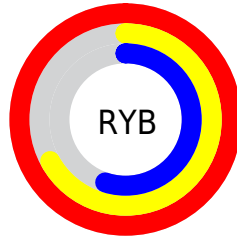
The Yxy color **49.6750, 0.4235, 0.3555** is a light color, and the websafe version is hex **FF9999**. A complement of this color would be **69.2774, 0.2464, 0.2996**, and the grayscale version is **50.6167, 0.3127, 0.3290**.

A 20% lighter version of the original color is **76.2967, 0.3574, 0.3567**, and **23.6922, 0.4536, 0.3583** is the 20% darker color. If you saturate the color by 10%, you get **42.4111, 0.4606, 0.3603**, and if you desaturate by 10%, it is **58.2384, 0.3911, 0.3498**.

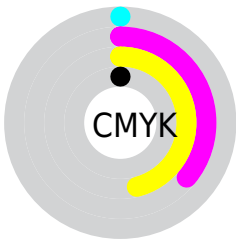
Distribution



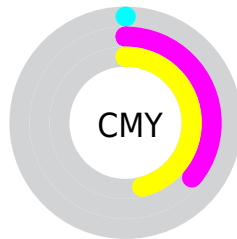
- Red (100%)
- Green (64%)
- Blue (55%)



- Red (100%)
- Yellow (67%)
- Blue (55%)



- Cyan (0%)
- Magenta (36%)
- Yellow (46%)
- Black (0%)




- Cyan (0%)
- Magenta (36%)
- Yellow (46%)

Brightness & Saturation Gradients


These gradients show how the Yxy color 49.6750, 0.4235, 0.3555 changes by changing the brightness by 10 percent. The first figure shows a shift by +10% for each color and the second figure -10%.

Similar to the brightness gradients but the following saturation gradients show a change of the Yxy color 49.6750, 0.4235, 0.3555 by changing the saturation by 10% instead.


 49.6750, 0.4235,
0.3555


 49.6750, 0.4235,
0.3555


385.3936, 0.3683,
0.3450


 35.1552, 0.4370,
0.3572

 89.6932, 0.4036,
0.3523

 23.7825, 0.4540,
0.3590


 115.9603, 0.3961,
0.3509

 15.1723, 0.4761,
0.3603


 146.9121, 0.3897,
0.3497

 8.9404, 0.5058,
0.3606

182.9329, 0.3842,
0.3486

 4.7023, 0.5467,
0.3577

224.4070, 0.3794,
0.3475

 2.0737, 0.6333,
0.3622

271.7189, 0.3753,

 0.6498, 0.6968,

0.3466

0.3032

325.2530, 0.3716,
0.3458

0.0000, 1.0000,
0.0000

0.0000, 0.0000,
0.0000

49.6750, 0.4235,
0.3555

49.6750, 0.4235,
0.3555

42.4111, 0.4606,
0.3603

58.2384, 0.3911,
0.3498

36.3815, 0.5011,
0.3631

68.1609, 0.3636,
0.3437

31.5159, 0.5422,
0.3630

79.4990, 0.3407,
0.3377

27.7362, 0.5794,
0.3592

92.3057, 0.3217,
0.3320

■ 24.9540, 0.6079,
0.3516

100.0000, 0.3127,
0.3290

■ 23.9949, 0.6176,
0.3478

Harmonies

Analogous

The Analogous color harmony consists of three colors that are next to each other on the color wheel.



49.6750, 0.3966, 0.3120



49.6750, 0.4235, 0.3555



49.6750, 0.4169, 0.3972

Triad

The Triadic color harmony groups three colors that are evenly spaced from another and form a triangle on the color wheel.



49.6750, 0.4235, 0.3555



49.6750, 0.2752, 0.3946



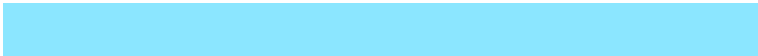
49.6750, 0.2425, 0.2405

Complementary

The Complementary color scheme is a pair of colors which are on the opposite of each other on the color wheel.



49.6750, 0.4235, 0.3555



69.2774, 0.2464, 0.2996

Split Complementary

Split-complementary colors differ from the complementary color scheme. The scheme consists of three colors, the original color and two neighbors of the complement color.



49.6750, 0.2166, 0.2525



49.6750, 0.4235, 0.3555



49.6750, 0.2336, 0.3391

Square

The Square scheme is like the rectangle color scheme, but the four colors are evenly spaced on the color wheel.



49.6750, 0.4235, 0.3555



49.6750, 0.3292, 0.4281



49.6750, 0.2133, 0.2865



49.6750, 0.2883, 0.2488

Rectangle

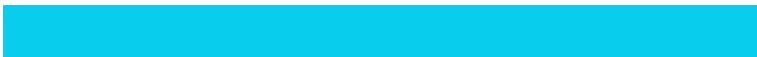
The Rectangle color scheme consists of four colors that form a rectangle on the color wheel.



49.6750, 0.4235, 0.3555



49.6750, 0.3958, 0.4189



49.6750, 0.2133, 0.2865



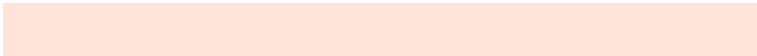
49.6750, 0.2315, 0.2421

Sweetspot

The Sweet Spot groups the original color and five complimentary colors.



49.6752, 0.4235, 0.3555



81.3305, 0.3376, 0.3368



45.5292, 0.3384, 0.2370



16.8480, 0.3421, 0.3380



0.0000, 0.0000, 0.0000



21.4041, 0.3127, 0.3290

Same Dimension

The Same Dimension uses a secret algorithm to generate beautiful new colors.



49.6752, 0.4235, 0.3555



42.7474, 0.4586, 0.3601



74.4088, 0.3954, 0.4112



18.6223, 0.3289, 0.3342



12.7134, 0.6150, 0.3498



1.3892, 0.5941, 0.3665

Inverse Universe

The Inverse Universe completely reimagines the original color for something new.



69.2774, 0.2464, 0.2996



64.5552, 0.2352, 0.2923



42.8909, 0.2338, 0.2291



19.7770, 0.2980, 0.3237



25.5788, 0.2050, 0.2578



2.6480, 0.2075, 0.2669

Previews

White Background



This preview shows how the Yxy color 49.6750, 0.4235, 0.3555 looks on a white background.

Color Contrast Check

Large Text (above 18pt) WCAG AA × Fail

Any Text WCAG AA × Fail

Large Text (above 18pt) WCAG AAA × Fail

Any Text WCAG AAA × Fail

Black Background



This preview shows how the Yxy color 49.6750, 0.4235, 0.3555 looks on a black background.

Color Contrast Check

Large Text (above 18pt) WCAG AA ✓ Pass

Any Text WCAG AA ✓ Pass

Large Text (above 18pt) WCAG AAA ✓ Pass

Any Text WCAG AAA ✓ Pass

If you want to check with other color combinations, try the [Color Contrast Checker](#).

Yxy 49.6750, 0.4235, 0.3555

Background



This preview shows how black text looks on a background with the Yxy color 49.6750, 0.4235, 0.3555.



This preview shows how white text looks on a background with the Yxy color 49.6750, 0.4235, 0.3555.

Color Blindness Simulation

Color vision deficiency is a very complex topic, and I could not describe the different causes any better than Wikipedia does, so if you want to learn more, you should check out their [article about color blindness](#).

Dichromacy



Original Color

49.6750, 0.4235, 0.3555

Protanopia

49.8527, 0.3536, 0.3771

Deuteranopia

49.9497, 0.3882, 0.3810



Tritanopia

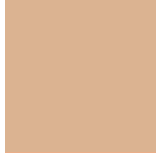
49.7283, 0.3924, 0.3177

Trichromacy



Original Color

49.6750, 0.4235, 0.3555



Protanomaly

49.3446, 0.3780, 0.3698



Deuteranomaly

49.5707, 0.4012, 0.3711



Tritanomaly

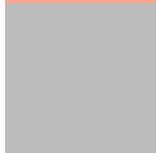
49.6387, 0.4039, 0.3314

Monochromacy



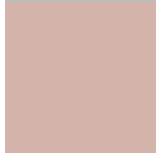
Original Color

49.6750, 0.4235, 0.3555



Achromatopsia

50.2886, 0.3127, 0.3290



Achromatomaly

49.1395, 0.3496, 0.3400

CSS Examples

Text

The CSS property to change the color of the text to Yxy 49.6750, 0.4235, 0.3555 is called "color". The color property can be set on classes, ids or directly on the HTML element.

This example shows how text in the color `rgb(255, 164, 139)` looks like.

```
.text, #text, p{  
    color:rgb(255, 164, 139)  
}
```

If you want to add a text shadow in that color use the text-shadow property, you can generate a text shadow directly with our [CSS Text Shadow Generator](#).

Here you see how black text with a 4 pixel rgb(255, 164, 139) colored shadow looks like.

```
.shadow{ text-shadow: 4px 4px 2px rgb(255, 164, 139) }
```

Border

The CSS property to change the border of an element to Yxy 49.6750, 0.4235, 0.3555 is called "border". The border property can be set on classes, ids or directly on the HTML element.

This example shows the color as border, it can be applied via the CSS property "border" or "border-color".

```
.border, #border, table{ border:4px solid rgb(255, 164, 139) }
```

If only the border color should be changed use the property `border-color`.

```
.border{ border-color:rgb(255, 164, 139) }
```

If you want to add a box shadow in that color use:

Here you see how a box with a 4 pixel `rgb(255, 164, 139)` colored shadow looks like.

```
.boxshadow{ -moz-box-shadow:4px 4px 4px  
4px rgb(255, 164, 139); -webkit-box-  
shadow:4px 4px 4px 4px rgb(255, 164, 139);  
box-shadow:4px 4px 4px 4px rgb(255, 164,  
139) }
```


Background

The CSS property to change the background color of an element to Yxy 49.6750, 0.4235, 0.3555 is called "background". The background property can be set on classes, ids or directly on the HTML element.

```
.background, #background, body{  
background: rgb(255, 164, 139) }
```

If only the background color should be changed can be used:

```
.background{ background-color: rgb(255,  
164, 139) }
```

This example shows the color as background, it is applied via the CSS property "background".

To optimize and compress your CSS code, you can use our [online CSS compressor and optimizer](#) based on csstidy. If you want to create a linear or radial gradient as background or border, check our [CSS Gradient Generator](#).

Hey! You found this booklet interesting? Support Converting Colors with the new Membership Option!

The pro membership hides all ads, plus gives you double the colors in the color bucket, and more awesome pro features!

[Learn more, Memberships starting at \\$2.50/m!](#)

**Follow me
on Twitter!**

@ConvertingColor