

Converting Colors

$Yxy(50.7202, 0.3301, 0.3242)$

Have a look what the booklet for
Yxy(50.7202, 0.3301, 0.3242)
contains.

Yxy(50.7202, 0.3301, 0.3242)	3
Conversions	4
Details	6
Harmonies	12
Previews	24
Color Blindness Simulation	27
CSS Examples	30

Color

Yxy(50.7202, 0.3301, 0.3242)

Conversions

Conversions Part 1

Format	Color
Hex	CFB7BB
RGB	207, 183, 187
RGB Percent	81%, 72%, 73%
CMY	0.1881, 0.2824, 0.2666
CMYK	0.00, 0.12, 0.10, 0.19
HSL	350°, 20%, 76%
HSV	350°, 12%, 81%
XYZ	51.6432, 50.7202, 54.0838
YIQ	190.6320, 13.0200, 6.3320

Conversions

Conversions Part 2

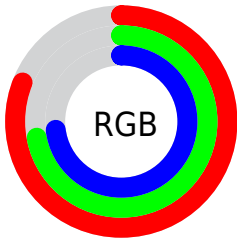
Format	Color
R _Y B	207, 183, 187
Decimal	13612987
CIE Lab	76.51, 9.25, 1.11
CIE LCh	77, 9.321, 6.821
Yxy	50.7202, 0.3301, 0.3242
Android (android.graphics.Color)	4291803067 (0xFFCFB7BB)
YUV	190.6320, -1.7906, 14.3547
Hunter-Lab	71.2181, 4.8061, 4.8272

Details

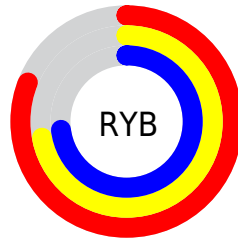
The Yxy color $50.7202, 0.3301, 0.3242$ is a light color, and the websafe version is hex `CCCCCC`. A complement of this color would be $59.0233, 0.2977, 0.3339$, and the grayscale version is $51.8845, 0.3127, 0.3290$.

A 20% lighter version of the original color is $89.4641, 0.3208, 0.3251$, and $24.4588, 0.3353, 0.3226$ is the 20% darker color. If you saturate the color by 10%, you get $42.1061, 0.3490, 0.3198$, and if you desaturate by 10%, it is $60.6837, 0.3149, 0.3284$.

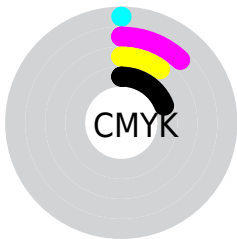
Distribution



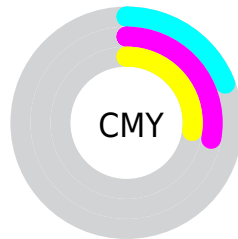
- Red (81%)
- Green (72%)
- Blue (73%)



- Red (81%)
- Yellow (72%)
- Blue (73%)



- Cyan (0%)
- Magenta (12%)
- Yellow (10%)
- Black (19%)





- Cyan (19%)
- Magenta (28%)
- Yellow (27%)

Brightness & Saturation Gradients


These gradients show how the Yxy color 50.7202, 0.3301, 0.3242 changes by changing the brightness by 10 percent. The first figure shows a shift by +10% for each color and the second figure -10%.


Similar to the brightness gradients but the following saturation gradients show a change of the Yxy color 50.7202, 0.3301, 0.3242 by changing the saturation by 10% instead.


 50.7202, 0.3301,
0.3242

 50.7202, 0.3301,
0.3242


389.4757, 0.3215,
0.3266

 35.9860, 0.3322,
0.3236


 91.2410, 0.3270,
0.3251

 24.4234, 0.3349,
0.3228


117.7965, 0.3258,
0.3254

 15.6480, 0.3385,
0.3218

149.0611, 0.3248,
0.3257

 9.2754, 0.3434,
0.3204

185.4193, 0.3240,
0.3259

 4.9212, 0.3507,
0.3183

227.2554, 0.3232,
0.3261

 2.2011, 0.3624,
0.3148

274.9540, 0.3226,

 0.7206, 0.3900,

0.3263

0.3079

328.8993, 0.3220,
0.3265

0.0000, 0.0000,
0.0000

50.7202, 0.3301,
0.3242

50.7202, 0.3301,
0.3242

42.1061, 0.3490,
0.3198

60.6837, 0.3149,
0.3284

34.7770, 0.3722,
0.3153

72.0443, 0.3026,
0.3322

28.6731, 0.4007,
0.3109

84.8553, 0.2926,
0.3357

23.7274, 0.4347,
0.3071

92.0109, 0.2844,
0.3289

19.8662, 0.4738,
0.3045

■ 17.0076, 0.5163,
0.3041

■ 15.0578, 0.5581,
0.3064

■ 13.9050, 0.5942,
0.3117

■ 13.3896, 0.6171,
0.3173

Harmonies

Analogous

The Analogous color harmony consists of three colors that are next to each other on the color wheel.



50.7202, 0.3187, 0.3146



50.7202, 0.3301, 0.3242



50.7202, 0.3368, 0.3352

Triad

The Triadic color harmony groups three colors that are evenly spaced from another and form a triangle on the color wheel.



50.7202, 0.3301, 0.3242



50.7202, 0.3192, 0.3504



50.7202, 0.2890, 0.3127

Complementary

The Complementary color scheme is a pair of colors which are on the opposite of each other on the color wheel.



50.7202, 0.3301, 0.3242



59.0233, 0.2977, 0.3339

Split Complementary

Split-complementary colors differ from the complementary color scheme. The scheme consists of three colors, the original color and two neighbors of the complement color.



50.7202, 0.2892, 0.3220



50.7202, 0.3301, 0.3242



50.7202, 0.3064, 0.3441

Square

The Square scheme is like the rectangle color scheme, but the four colors are evenly spaced on the color wheel.



50.7202, 0.3301, 0.3242



50.7202, 0.3304, 0.3506



50.7202, 0.2955, 0.3336



50.7202, 0.2951, 0.3079

Rectangle

The Rectangle color scheme consists of four colors that form a rectangle on the color wheel.



50.7202, 0.3301, 0.3242



50.7202, 0.3377, 0.3420



50.7202, 0.2955, 0.3336



50.7202, 0.2884, 0.3154

Sweetspot

The Sweet Spot groups the original color and five complimentary colors.



50.7224, 0.3301, 0.3242



94.8121, 0.3169, 0.3278



51.0149, 0.3104, 0.3003



20.0044, 0.3180, 0.3275



0.0000, 0.0000, 0.0000



21.4041, 0.3127, 0.3290

Same Dimension

The Same Dimension uses a secret algorithm to generate beautiful new colors.



50.7224, 0.3301, 0.3242



77.5301, 0.3345, 0.3231



53.7795, 0.3323, 0.3382



11.8400, 0.3265, 0.3251



8.4421, 0.6143, 0.3158



0.4822, 0.5669, 0.2896

Inverse Universe

The Inverse Universe completely reimagines the original color for something new.



50.7224, 0.3301, 0.3242



77.5301, 0.3345, 0.3231



55.6150, 0.2949, 0.3196



11.8400, 0.3265, 0.3251



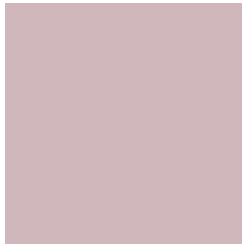
8.4421, 0.6143, 0.3158



0.4822, 0.5669, 0.2896

Previews

White Background



This preview shows how the Yxy color 50.7202, 0.3301, 0.3242 looks on a white background.

Color Contrast Check

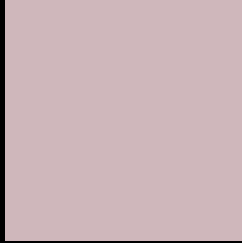
Large Text (above 18pt) WCAG AA × Fail

Any Text WCAG AA × Fail

Large Text (above 18pt) WCAG AAA × Fail

Any Text WCAG AAA × Fail

Black Background



This preview shows how the Yxy color 50.7202, 0.3301, 0.3242 looks on a black background.

Color Contrast Check

Large Text (above 18pt) WCAG AA ✓ Pass

Any Text WCAG AA ✓ Pass

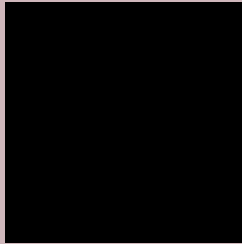
Large Text (above 18pt) WCAG AAA ✓ Pass

Any Text WCAG AAA ✓ Pass

If you want to check with other color combinations, try the [Color Contrast Checker](#).

Yxy 50.7202, 0.3301, 0.3242

Background



This preview shows how black text looks on a background with the Yxy color 50.7202, 0.3301, 0.3242.



This preview shows how white text looks on a background with the Yxy color 50.7202, 0.3301, 0.3242.

Color Blindness Simulation

Color vision deficiency is a very complex topic, and I could not describe the different causes any better than Wikipedia does, so if you want to learn more, you should check out their [article about color blindness](#).

Dichromacy



Original Color

50.7202, 0.3301, 0.3242

Protanopia

50.8906, 0.3145, 0.3265

Deuteranopia

50.8647, 0.3309, 0.3242



Tritanopia

50.8513, 0.3237, 0.3123

Trichromacy



Original Color

50.7202, 0.3301, 0.3242

Protanomaly

50.6623, 0.3196, 0.3253

Deuteranomaly

50.8647, 0.3309, 0.3242

Tritanomaly

50.7160, 0.3261, 0.3159

Monochromacy



Original Color

50.7202, 0.3301, 0.3242

Achromatopsia

52.0996, 0.3127, 0.3290

Achromatomaly

51.5545, 0.3186, 0.3266

CSS Examples

Text

The CSS property to change the color of the text to Yxy 50.7202, 0.3301, 0.3242 is called "color". The color property can be set on classes, ids or directly on the HTML element.

This example shows how text in the color `rgb(207, 183, 187)` looks like.

```
.text, #text, p{  
    color:rgb(207, 183, 187)  
}
```

If you want to add a text shadow in that color use the text-shadow property, you can generate a text shadow directly with our [CSS Text Shadow Generator](#).

Here you see how black text with a 4 pixel rgb(207, 183, 187) colored shadow looks like.

```
.shadow{ text-shadow: 4px 4px 2px rgb(207, 183, 187) }
```

Border

The CSS property to change the border of an element to Yxy 50.7202, 0.3301, 0.3242 is called "border". The border property can be set on classes, ids or directly on the HTML element.

This example shows the color as border, it can be applied via the CSS property "border" or "border-color".

```
.border, #border, table{ border:4px solid rgb(207, 183, 187) }
```

If only the border color should be changed use the property `border-color`.

```
.border{ border-color:rgb(207, 183, 187) }
```

If you want to add a box shadow in that color use:

Here you see how a box with a 4 pixel `rgb(207, 183, 187)` colored shadow looks like.

```
.boxshadow{ -moz-box-shadow:4px 4px 4px  
4px rgb(207, 183, 187); -webkit-box-  
shadow:4px 4px 4px 4px rgb(207, 183, 187);  
box-shadow:4px 4px 4px 4px rgb(207, 183,  
187) }
```


Background

The CSS property to change the background color of an element to Yxy 50.7202, 0.3301, 0.3242 is called "background". The background property can be set on classes, ids or directly on the HTML element.

```
.background, #background, body{  
background: rgb(207, 183, 187) }
```

If only the background color should be changed can be used:

```
.background{ background-color: rgb(207,  
183, 187) }
```

This example shows the color as background, it is applied via the CSS property "background".

To optimize and compress your CSS code, you can use our [online CSS compressor and optimizer](#) based on csstidy. If you want to create a linear or radial gradient as background or border, check our [CSS Gradient Generator](#).

Hey! You found this booklet interesting? Support Converting Colors with the new Membership Option!

The pro membership hides all ads, plus gives you double the colors in the color bucket, and more awesome pro features!

[Learn more, Memberships starting at \\$2.50/m!](#)

**Follow me
on Twitter!**

@ConvertingColor