

Converting Colors

$Yxy(50.8377, 0.3512, 0.3507)$

Have a look what the booklet for
Yxy(50.8377, 0.3512, 0.3507)
contains.

Yxy(50.8830, 0.3510, 0.3510)	3
Conversions	4
Details	6
Harmonies	12
Previews	24
Color Blindness Simulation	27
CSS Examples	30

Color

Yxy(50.8830, 0.3510, 0.3510)

Conversions

Conversions Part 1

Format	Color
Hex	D3B8A6
RGB	211, 184, 166
RGB Percent	83%, 72%, 65%
CMY	0.1726, 0.2784, 0.3491
CMYK	0.00, 0.13, 0.21, 0.17
HSL	24°, 34%, 74%
HSV	24°, 21%, 83%
XYZ	50.8830, 50.8830, 43.1998
YIQ	190.0210, 21.8700, 0.1260

Conversions

Conversions Part 2

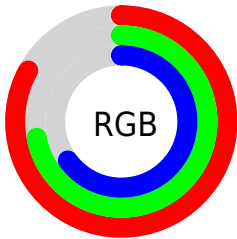
Format	Color
RYB	211, 196, 166
Decimal	13875366
CIELab	76.61, 6.82, 12.71
CIELCh	77, 14.420, 61.789
Yxy	50.8830, 0.3510, 0.3510
Android (android.graphics.Color)	4292065446 (0xFFD3B8A6)
YUV	190.0210, -11.8424, 18.3986
Hunter-Lab	71.3323, 2.4966, 14.0258

Details

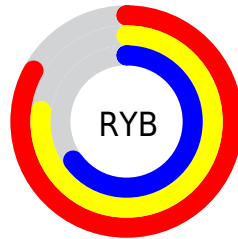
The Yxy color $50.8830, 0.3510, 0.3510$ is a light color, and the websafe version is hex `CCCCCC`. A complement of this color would be $50.9232, 0.2796, 0.3059$, and the grayscale version is $51.5648, 0.3127, 0.3290$.

A 20% lighter version of the original color is $88.8006, 0.3347, 0.3478$, and $24.5154, 0.3618, 0.3567$ is the 20% darker color. If you saturate the color by 10%, you get $45.1529, 0.3735, 0.3620$, and if you desaturate by 10%, it is $57.2143, 0.3315, 0.3404$.

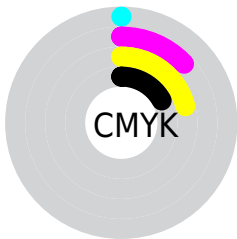
Distribution



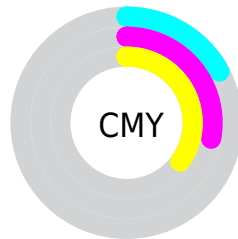
- Red (83%)
- Green (72%)
- Blue (65%)



- Red (83%)
- Yellow (77%)
- Blue (65%)



- Cyan (0%)
- Magenta (13%)
- Yellow (21%)
- Black (17%)





- Cyan (17%)
- Magenta (28%)
- Yellow (35%)

Brightness & Saturation Gradients


These gradients show how the Yxy color 50.8830, 0.3510, 0.3510 changes by changing the brightness by 10 percent. The first figure shows a shift by +10% for each color and the second figure -10%.


Similar to the brightness gradients but the following saturation gradients show a change of the Yxy color 50.8830, 0.3510, 0.3510 by changing the saturation by 10% instead.

 50.8830, 0.3510,
0.3510


 50.8830, 0.3510,
0.3510


390.1090, 0.3320,
0.3404

 36.1155, 0.3557,
0.3535


 91.4818, 0.3441,
0.3472

 24.5234, 0.3616,
0.3567


 118.0819, 0.3416,
0.3458

 15.7223, 0.3695,
0.3607


149.3950, 0.3394,
0.3446

 9.3279, 0.3804,
0.3662


185.8055, 0.3375,
0.3435

 4.9557, 0.3962,
0.3737

227.6977, 0.3359,
0.3426

 2.2213, 0.4213,
0.3846

275.4561, 0.3344,

 0.7316, 0.5409,

0.3418

0.4591

329.4651, 0.3332,
0.3411

0.0000, 0.0000,
0.0000

50.8830, 0.3510,
0.3510

50.8830, 0.3510,
0.3510

45.1529, 0.3735,
0.3620

57.2143, 0.3315,
0.3404

39.9986, 0.3993,
0.3728

64.1574, 0.3148,
0.3303

35.4029, 0.4280,
0.3828

71.7313, 0.3004,
0.3209

31.3453, 0.4592,
0.3910

79.9523, 0.2881,
0.3123

27.8035, 0.4915,
0.3961

87.7294, 0.2862,
0.3209

■ 24.7534, 0.5228,
0.3968

■ 92.5876, 0.2866,
0.3289

■ 22.1682, 0.5506,
0.3923

■ 20.2749, 0.5709,
0.3849

Harmonies

Analogous

The Analogous color harmony consists of three colors that are next to each other on the color wheel.



50.8830, 0.3491, 0.3354



50.8830, 0.3510, 0.3510



50.8830, 0.3423, 0.3614

Triad

The Triadic color harmony groups three colors that are evenly spaced from another and form a triangle on the color wheel.



50.8830, 0.3510, 0.3510



50.8830, 0.2886, 0.3391



50.8830, 0.2989, 0.2972

Complementary

The Complementary color scheme is a pair of colors which are on the opposite of each other on the color wheel.



50.8830, 0.3510, 0.3510



50.9232, 0.2796, 0.3059

Split Complementary

Split-complementary colors differ from the complementary color scheme. The scheme consists of three colors, the original color and two neighbors of the complement color.



50.8830, 0.2834, 0.2972



50.8830, 0.3510, 0.3510



50.8830, 0.2777, 0.3208

Square

The Square scheme is like the rectangle color scheme, but the four colors are evenly spaced on the color wheel.



50.8830, 0.3510, 0.3510



50.8830, 0.3061, 0.3549



50.8830, 0.2758, 0.3056



50.8830, 0.3185, 0.3050

Rectangle

The Rectangle color scheme consists of four colors that form a rectangle on the color wheel.



50.8830, 0.3510, 0.3510



50.8830, 0.3319, 0.3636



50.8830, 0.2758, 0.3056



50.8830, 0.2931, 0.2962

Sweetspot

The Sweet Spot groups the original color and five complimentary colors.



50.8853, 0.3510, 0.3510



93.3426, 0.3224, 0.3350



44.9578, 0.3307, 0.2967



19.8286, 0.3235, 0.3356



0.0000, 0.0000, 0.0000



21.4041, 0.3127, 0.3290

Same Dimension

The Same Dimension uses a secret algorithm to generate beautiful new colors.



50.8853, 0.3510, 0.3510



73.6596, 0.3617, 0.3564



60.9781, 0.3457, 0.3769



12.5747, 0.3281, 0.3384



12.4255, 0.5683, 0.3870



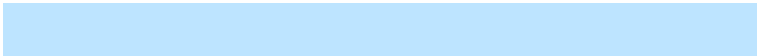
0.8484, 0.5348, 0.4136

Inverse Universe

The Inverse Universe completely reimagines the original color for something new.



50.9232, 0.2796, 0.3059



73.7242, 0.2718, 0.2999



41.7323, 0.2775, 0.2761



12.5790, 0.2983, 0.3195



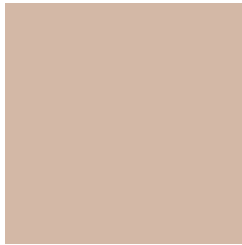
12.1172, 0.1870, 0.1931



0.8306, 0.1946, 0.2206

Previews

White Background



This preview shows how the Yxy color 50.8830, 0.3510, 0.3510 looks on a white background.

Color Contrast Check

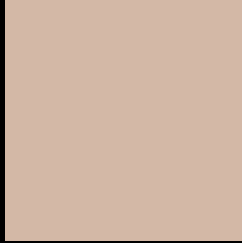
Large Text (above 18pt) WCAG AA × Fail

Any Text WCAG AA × Fail

Large Text (above 18pt) WCAG AAA × Fail

Any Text WCAG AAA × Fail

Black Background



This preview shows how the Yxy color 50.8830, 0.3510, 0.3510 looks on a black background.

Color Contrast Check

Large Text (above 18pt) WCAG AA ✓ Pass

Any Text WCAG AA ✓ Pass

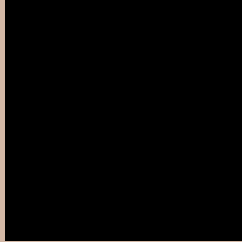
Large Text (above 18pt) WCAG AAA ✓ Pass

Any Text WCAG AAA ✓ Pass

If you want to check with other color combinations, try the [Color Contrast Checker](#).

Yxy 50.8830, 0.3510, 0.3510

Background



This preview shows how black text looks on a background with the Yxy color 50.8830, 0.3510, 0.3510.



This preview shows how white text looks on a background with the Yxy color 50.8830, 0.3510, 0.3510.

Color Blindness Simulation

Color vision deficiency is a very complex topic, and I could not describe the different causes any better than Wikipedia does, so if you want to learn more, you should check out their [article about color blindness](#).

Dichromacy



Original Color

50.8830, 0.3510, 0.3510

Protanopia

51.0927, 0.3359, 0.3554

Deuteranopia

50.8080, 0.3560, 0.3483



Tritanopia

50.8337, 0.3307, 0.3126

Trichromacy



Original Color

50.8830, 0.3510, 0.3510

Protanomaly

50.8872, 0.3415, 0.3539

Deuteranomaly

50.9163, 0.3539, 0.3496

Tritanomaly

50.6546, 0.3381, 0.3255

Monochromacy



Original Color

50.8830, 0.3510, 0.3510

Achromatopsia

51.4918, 0.3127, 0.3290

Achromatomaly

51.3084, 0.3266, 0.3377

CSS Examples

Text

The CSS property to change the color of the text to Yxy 50.8830, 0.3510, 0.3510 is called "color". The color property can be set on classes, ids or directly on the HTML element.

This example shows how text in the color `rgb(211, 184, 166)` looks like.

```
.text, #text, p{  
    color:rgb(211, 184, 166)  
}
```

If you want to add a text shadow in that color use the text-shadow property, you can generate a text shadow directly with our [CSS Text Shadow Generator](#).

Here you see how black text with a 4 pixel rgb(211, 184, 166) colored shadow looks like.

```
.shadow{ text-shadow: 4px 4px 2px rgb(211, 184, 166) }
```

Border

The CSS property to change the border of an element to Yxy 50.8830, 0.3510, 0.3510 is called "border". The border property can be set on classes, ids or directly on the HTML element.

This example shows the color as border, it can be applied via the CSS property "border" or "border-color".

```
.border, #border, table{ border:4px solid rgb(211, 184, 166) }
```

If only the border color should be changed use the property `border-color`.

```
.border{ border-color:rgb(211, 184, 166) }
```

If you want to add a box shadow in that color use:

Here you see how a box with a 4 pixel `rgb(211, 184, 166)` colored shadow looks like.

```
.boxshadow{ -moz-box-shadow:4px 4px 4px  
4px rgb(211, 184, 166); -webkit-box-  
shadow:4px 4px 4px 4px rgb(211, 184, 166);  
box-shadow:4px 4px 4px 4px rgb(211, 184,  
166) }
```


Background

The CSS property to change the background color of an element to Yxy 50.8830, 0.3510, 0.3510 is called "background". The background property can be set on classes, ids or directly on the HTML element.

```
.background, #background, body{  
background: rgb(211, 184, 166) }
```

If only the background color should be changed can be used:

```
.background{ background-color: rgb(211,  
184, 166) }
```

This example shows the color as background, it is applied via the CSS property "background".

To optimize and compress your CSS code, you can use our [online CSS compressor and optimizer](#) based on csstidy. If you want to create a linear or radial gradient as background or border, check our [CSS Gradient Generator](#).

Hey! You found this booklet interesting? Support Converting Colors with the new Membership Option!

The pro membership hides all ads, plus gives you double the colors in the color bucket, and more awesome pro features!

[Learn more, Memberships starting at \\$2.50/m!](#)

**Follow me
on Twitter!**

@ConvertingColor