

Converting Colors

Yxy(50.8619, 0.3331, 0.3234)

Have a look what the booklet for
Yxy(50.8619, 0.3331, 0.3234)
contains.

Yxy(50.7454, 0.3328, 0.3231)	3
<i>Conversions</i>	4
<i>Details</i>	6
<i>Harmonies</i>	12
<i>Previews</i>	24
<i>Color Blindness Simulation</i>	27
<i>CSS Examples</i>	30

Color

Yxy(50.7454, 0.3328, 0.3231)

Conversions

Conversions Part 1

Format	Color
Hex	D2B6BB
RGB	210, 182, 187
RGB Percent	82%, 71%, 73%
CMY	0.1766, 0.2862, 0.2667
CMYK	0.00, 0.13, 0.11, 0.18
HSL	349°, 24%, 77%
HSV	349°, 13%, 82%
XYZ	52.2689, 50.7454, 54.0436
YIQ	190.9420, 15.0830, 7.4910

Conversions

Conversions Part 2

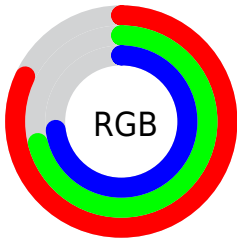
Format	Color
R _{YB}	210, 182, 187
Decimal	13809339
CIE Lab	76.52, 10.83, 1.17
CIE LCh	77, 10.893, 6.180
Yxy	50.7454, 0.3328, 0.3231
Android (android.graphics.Color)	4291999419 (0xFFD2B6BB)
YUV	190.9420, -1.9434, 16.7139
Hunter-Lab	71.2358, 6.3107, 4.8842

Details

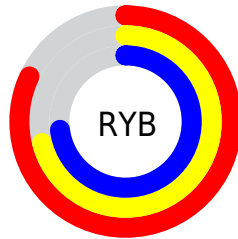
The Yxy color **50.7454, 0.3328, 0.3231** is a light color, and the websafe version is hex **CCCCCC**. A complement of this color would be **60.4359, 0.2958, 0.3350**, and the grayscale version is **52.0692, 0.3127, 0.3290**.

A 20% lighter version of the original color is **88.8801, 0.3209, 0.3242**, and **24.3903, 0.3379, 0.3211** is the 20% darker color. If you saturate the color by 10%, you get **42.0858, 0.3521, 0.3184**, and if you desaturate by 10%, it is **60.7880, 0.3172, 0.3276**.

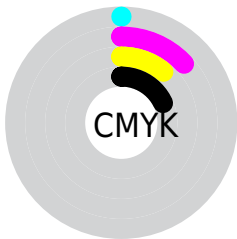
Distribution



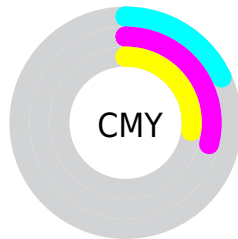
- Red (82%)
- Green (71%)
- Blue (73%)



- Red (82%)
- Yellow (71%)
- Blue (73%)



- Cyan (0%)
- Magenta (13%)
- Yellow (11%)
- Black (18%)




- Cyan (18%)
- Magenta (29%)
- Yellow (27%)

Brightness & Saturation Gradients

These gradients show how the Yxy color 50.7454, 0.3328, 0.3231 changes by changing the brightness by 10 percent. The first figure shows a shift by +10% for each color and the second figure -10%.


Similar to the brightness gradients but the following saturation gradients show a change of the Yxy color 50.7454, 0.3328, 0.3231 by changing the saturation by 10% instead.


 50.7454, 0.3328,
0.3231

 50.7454, 0.3328,
0.3231


389.5738, 0.3229,
0.3261

 36.0060, 0.3352,
0.3224


 91.2783, 0.3292,
0.3242

 24.4389, 0.3384,
0.3214


117.8407, 0.3279,
0.3246

 15.6595, 0.3425,
0.3202


149.1128, 0.3267,
0.3249

 9.2835, 0.3482,
0.3184

185.4791, 0.3257,
0.3252

 4.9266, 0.3566,
0.3158

227.3239, 0.3249,
0.3255

 2.2042, 0.3701,
0.3115

275.0317, 0.3241,

 0.7223, 0.4011,

0.3257

0.3032

328.9869, 0.3235,
0.3259

0.0000, 0.0000,
0.0000

50.7454, 0.3328,
0.3231

50.7454, 0.3328,
0.3231

42.0858, 0.3521,
0.3184

60.7880, 0.3172,
0.3276

34.7421, 0.3759,
0.3135

72.2634, 0.3046,
0.3317

28.6517, 0.4049,
0.3089

85.2273, 0.2944,
0.3355

23.7442, 0.4394,
0.3050

92.4379, 0.2860,
0.3289

19.9424, 0.4788,
0.3026

■ 17.1598, 0.5210,
0.3024

■ 15.2967, 0.5621,
0.3053

■ 14.2334, 0.5968,
0.3114

■ 13.8334, 0.6148,
0.3160

Harmonies

Analogous

The Analogous color harmony consists of three colors that are next to each other on the color wheel.



50.7454, 0.3194, 0.3120



50.7454, 0.3328, 0.3231



50.7454, 0.3408, 0.3359

Triad

The Triadic color harmony groups three colors that are evenly spaced from another and form a triangle on the color wheel.



50.7454, 0.3328, 0.3231



50.7454, 0.3206, 0.3541



50.7454, 0.2851, 0.3101

Complementary

The Complementary color scheme is a pair of colors which are on the opposite of each other on the color wheel.



50.7454, 0.3328, 0.3231



60.4359, 0.2958, 0.3350

Split Complementary

Split-complementary colors differ from the complementary color scheme. The scheme consists of three colors, the original color and two neighbors of the complement color.



50.7454, 0.2854, 0.3210



50.7454, 0.3328, 0.3231



50.7454, 0.3057, 0.3470

Square

The Square scheme is like the rectangle color scheme, but the four colors are evenly spaced on the color wheel.



50.7454, 0.3328, 0.3231



50.7454, 0.3336, 0.3541



50.7454, 0.2929, 0.3347



50.7454, 0.2919, 0.3044

Rectangle

The Rectangle color scheme consists of four colors that form a rectangle on the color wheel.



50.7454, 0.3328, 0.3231



50.7454, 0.3419, 0.3438



50.7454, 0.2929, 0.3347



50.7454, 0.2843, 0.3132

Sweetspot

The Sweet Spot groups the original color and five complimentary colors.



50.7477, 0.3328, 0.3231



93.1353, 0.3182, 0.3273



51.0721, 0.3100, 0.2960



19.6672, 0.3193, 0.3269



0.0000, 0.0000, 0.0000



21.4041, 0.3127, 0.3290

Same Dimension

The Same Dimension uses a secret algorithm to generate beautiful new colors.



50.7477, 0.3328, 0.3231



74.6988, 0.3379, 0.3218



54.2808, 0.3355, 0.3396



11.8420, 0.3263, 0.3249



8.4510, 0.6118, 0.3144



0.4832, 0.5629, 0.2875

Inverse Universe

The Inverse Universe completely reimagines the original color for something new.



50.7477, 0.3328, 0.3231



74.6988, 0.3379, 0.3218



56.4288, 0.2922, 0.3181



11.8420, 0.3263, 0.3249



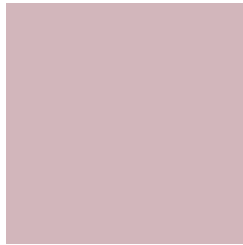
8.4510, 0.6118, 0.3144



0.4832, 0.5629, 0.2875

Previews

White Background



This preview shows how the Yxy color 50.7454, 0.3328, 0.3231 looks on a white background.

Color Contrast Check

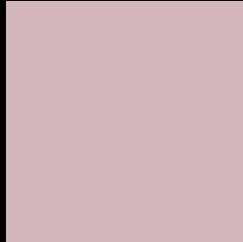
Large Text (above 18pt) WCAG AA × Fail

Any Text WCAG AA × Fail

Large Text (above 18pt) WCAG AAA × Fail

Any Text WCAG AAA × Fail

Black Background



This preview shows how the Yxy color 50.7454, 0.3328, 0.3231 looks on a black background.

Color Contrast Check

Large Text (above 18pt) WCAG AA ✓ Pass

Any Text WCAG AA ✓ Pass

Large Text (above 18pt) WCAG AAA ✓ Pass

Any Text WCAG AAA ✓ Pass

If you want to check with other color combinations, try the [Color Contrast Checker](#).

Yxy 50.7454, 0.3328, 0.3231

Background



This preview shows how black text looks on a background with the Yxy color 50.7454, 0.3328, 0.3231.



This preview shows how white text looks on a background with the Yxy color 50.7454, 0.3328, 0.3231.

Color Blindness Simulation

Color vision deficiency is a very complex topic, and I could not describe the different causes any better than Wikipedia does, so if you want to learn more, you should check out their [article about color blindness](#).

Dichromacy



Original Color

50.7454, 0.3328, 0.3231

Protanopia

50.8906, 0.3145, 0.3265

Deuteranopia

50.8647, 0.3309, 0.3242



Tritanopia

50.8368, 0.3272, 0.3124

Trichromacy



Original Color

50.7454, 0.3328, 0.3231

Protanomaly

50.9340, 0.3213, 0.3253

Deuteranomaly

51.0101, 0.3318, 0.3243

Tritanomaly

50.7024, 0.3297, 0.3160

Monochromacy



Original Color

50.7454, 0.3328, 0.3231

Achromatopsia

52.0996, 0.3127, 0.3290

Achromatomaly

51.6899, 0.3195, 0.3266

CSS Examples

Text

The CSS property to change the color of the text to Yxy 50.7454, 0.3328, 0.3231 is called "color". The color property can be set on classes, ids or directly on the HTML element.

This example shows how text in the color `rgb(210, 182, 187)` looks like.

```
.text, #text, p{  
    color:rgb(210, 182, 187)  
}
```

If you want to add a text shadow in that color use the text-shadow property, you can generate a text shadow directly with our [CSS Text Shadow Generator](#).

Here you see how black text with a 4 pixel rgb(210, 182, 187) colored shadow looks like.

```
.shadow{ text-shadow: 4px 4px 2px rgb(210, 182, 187) }
```

Border

The CSS property to change the border of an element to Yxy 50.7454, 0.3328, 0.3231 is called "border". The border property can be set on classes, ids or directly on the HTML element.

This example shows the color as border, it can be applied via the CSS property "border" or "border-color".

```
.border, #border, table{ border:4px solid rgb(210, 182, 187) }
```

If only the border color should be changed use the property `border-color`.

```
.border{ border-color:rgb(210, 182, 187) }
```

If you want to add a box shadow in that color use:

Here you see how a box with a 4 pixel `rgb(210, 182, 187)` colored shadow looks like.

```
.boxshadow{ -moz-box-shadow:4px 4px 4px  
4px rgb(210, 182, 187); -webkit-box-  
shadow:4px 4px 4px 4px rgb(210, 182, 187);  
box-shadow:4px 4px 4px 4px rgb(210, 182,  
187) }
```


Background

The CSS property to change the background color of an element to Yxy 50.7454, 0.3328, 0.3231 is called "background". The background property can be set on classes, ids or directly on the HTML element.

```
.background, #background, body{  
background: rgb(210, 182, 187) }
```

If only the background color should be changed can be used:

```
.background{ background-color: rgb(210,  
182, 187) }
```

This example shows the color as background, it is applied via the CSS property "background".

To optimize and compress your CSS code, you can use our [online CSS compressor and optimizer](#) based on csstidy. If you want to create a linear or radial gradient as background or border, check our [CSS Gradient Generator](#).

Hey! You found this booklet interesting? Support Converting Colors with the new Membership Option!

The pro membership hides all ads, plus gives you double the colors in the color bucket, and more awesome pro features!

[Learn more, Memberships starting at \\$2.50/m!](#)

**Follow me
on Twitter!**

@ConvertingColor