

Converting Colors

$Yxy(50.9014, 0.3825, 0.3738)$

Have a look what the booklet for
Yxy(50.9014, 0.3825, 0.3738)
contains.

Yxy(50.7189, 0.3826, 0.3738)	3
Conversions	4
Details	6
Harmonies	12
Previews	24
Color Blindness Simulation	27
CSS Examples	30

Color

Yxy(50.7189, 0.3826, 0.3738)

Conversions

Conversions Part 1

Format	Color
Hex	DFB58F
RGB	223, 181, 143
RGB Percent	87%, 71%, 56%
CMY	0.1255, 0.2902, 0.4391
CMYK	0.00, 0.19, 0.36, 0.13
HSL	28°, 56%, 72%
HSV	28°, 36%, 87%
XYZ	51.9129, 50.7189, 33.0528
YIQ	189.2260, 37.2300, -2.9140

Conversions

Conversions Part 2

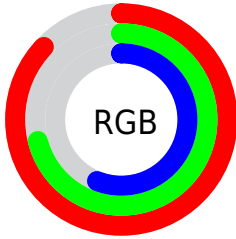
Format	Color
R _Y B	223, 215, 143
Decimal	14661007
CIE Lab	76.51, 9.97, 25.08
CIE LCh	77, 26.991, 68.329
Yxy	50.7189, 0.3826, 0.3738
Android (android.graphics.Color)	4292851087 (0xFFDFB58F)
YUV	189.2260, -22.7894, 29.6198
Hunter-Lab	71.2172, 5.4853, 22.3348

Details

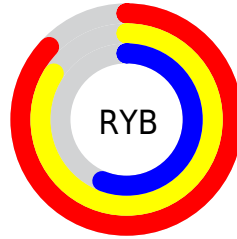
The Yxy color **50.7189, 0.3826, 0.3738** is a light color, and the websafe version is hex **FFCC99**. A complement of this color would be **45.8746, 0.2556, 0.2792**, and the grayscale version is **51.1442, 0.3127, 0.3290**.

A 20% lighter version of the original color is **85.8596, 0.3509, 0.3692**, and **24.3180, 0.4017, 0.3849** is the 20% darker color. If you saturate the color by 10%, you get **45.5476, 0.4080, 0.3863**, and if you desaturate by 10%, it is **56.4295, 0.3598, 0.3609**.

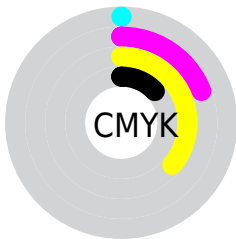
Distribution



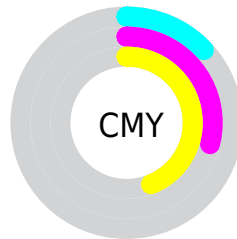
- Red (87%)
- Green (71%)
- Blue (56%)



- Red (87%)
- Yellow (84%)
- Blue (56%)



- Cyan (0%)
- Magenta (19%)
- Yellow (36%)
- Black (13%)





- Cyan (13%)
- Magenta (29%)
- Yellow (44%)

Brightness & Saturation Gradients


These gradients show how the Yxy color 50.7189, 0.3826, 0.3738 changes by changing the brightness by 10 percent. The first figure shows a shift by +10% for each color and the second figure -10%.


Similar to the brightness gradients but the following saturation gradients show a change of the Yxy color 50.7189, 0.3826, 0.3738 by changing the saturation by 10% instead.


 50.7189, 0.3826,
0.3738


 50.7189, 0.3826,
0.3738


389.4707, 0.3481,
0.3526

 35.9849, 0.3910,
0.3786


 91.2391, 0.3702,
0.3664

 24.4226, 0.4016,
0.3845


 117.7942, 0.3655,
0.3636

 15.6474, 0.4154,
0.3919


149.0584, 0.3615,
0.3611

 9.2750, 0.4339,
0.4011

185.4162, 0.3581,
0.3590

 4.9210, 0.4596,
0.4125

227.2519, 0.3551,
0.3571

 2.2010, 0.5133,
0.4395

274.9499, 0.3525,

 0.7205, 0.5638,

0.3554

0.4362

328.8947, 0.3501,
0.3540

0.0000, 0.0000,
0.0000

50.7189, 0.3826,
0.3738

50.7189, 0.3826,
0.3738

45.5476, 0.4080,
0.3863

56.4295, 0.3598,
0.3609

40.8906, 0.4355,
0.3974

62.6891, 0.3396,
0.3481

36.7314, 0.4642,
0.4060

69.5160, 0.3220,
0.3358

33.0493, 0.4927,
0.4108

76.9253, 0.3066,
0.3243

29.8216, 0.5191,
0.4106

84.9317, 0.2933,
0.3137

■ 27.0223, 0.5415,
0.4049

■ 92.0625, 0.2934,
0.3252

■ 25.9749, 0.5499,
0.4016

■ 94.4264, 0.2935,
0.3289

Harmonies

Analogous

The Analogous color harmony consists of three colors that are next to each other on the color wheel.



50.7189, 0.3840, 0.3459



50.7189, 0.3826, 0.3738



50.7189, 0.3617, 0.3920

Triad

The Triadic color harmony groups three colors that are evenly spaced from another and form a triangle on the color wheel.



50.7189, 0.3826, 0.3738



50.7189, 0.2623, 0.3398



50.7189, 0.2940, 0.2734

Complementary

The Complementary color scheme is a pair of colors which are on the opposite of each other on the color wheel.



50.7189, 0.3826, 0.3738



45.8746, 0.2556, 0.2792

Split Complementary

Split-complementary colors differ from the complementary color scheme. The scheme consists of three colors, the original color and two neighbors of the complement color.



50.7189, 0.2637, 0.2695



50.7189, 0.3826, 0.3738



50.7189, 0.2463, 0.3053

Square

The Square scheme is like the rectangle color scheme, but the four colors are evenly spaced on the color wheel.



50.7189, 0.3826, 0.3738



50.7189, 0.2919, 0.3732



50.7189, 0.2469, 0.2802



50.7189, 0.3311, 0.2901

Rectangle

The Rectangle color scheme consists of four colors that form a rectangle on the color wheel.



50.7189, 0.3826, 0.3738



50.7189, 0.3402, 0.3948



50.7189, 0.2469, 0.2802



50.7189, 0.2827, 0.2705

Sweetspot

The Sweet Spot groups the original color and five complimentary colors.



50.7213, 0.3826, 0.3738



89.2836, 0.3309, 0.3422



38.8728, 0.3528, 0.2794



18.8419, 0.3333, 0.3438



0.0000, 0.0000, 0.0000



21.4041, 0.3127, 0.3290

Same Dimension

The Same Dimension uses a secret algorithm to generate beautiful new colors.



50.7213, 0.3826, 0.3738



63.4414, 0.4013, 0.3832



69.0278, 0.3674, 0.4153



14.7689, 0.3280, 0.3402



15.4974, 0.5475, 0.4035



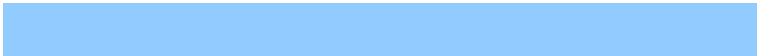
1.2526, 0.5226, 0.4232

Inverse Universe

The Inverse Universe completely reimagines the original color for something new.



45.8746, 0.2556, 0.2792



55.9476, 0.2437, 0.2667



31.6347, 0.2481, 0.2250



14.4284, 0.2981, 0.3176



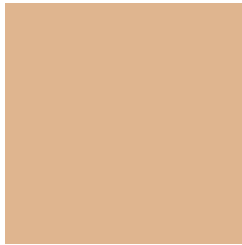
10.8540, 0.1797, 0.1668



0.9313, 0.1871, 0.1937

Previews

White Background



This preview shows how the Yxy color 50.7189, 0.3826, 0.3738 looks on a white background.

Color Contrast Check

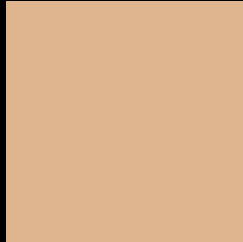
Large Text (above 18pt) WCAG AA × Fail

Any Text WCAG AA × Fail

Large Text (above 18pt) WCAG AAA × Fail

Any Text WCAG AAA × Fail

Black Background



This preview shows how the Yxy color 50.7189, 0.3826, 0.3738 looks on a black background.

Color Contrast Check

Large Text (above 18pt) WCAG AA ✓ Pass

Any Text WCAG AA ✓ Pass

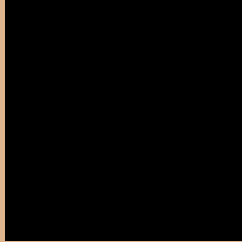
Large Text (above 18pt) WCAG AAA ✓ Pass

Any Text WCAG AAA ✓ Pass

If you want to check with other color combinations, try the [Color Contrast Checker](#).

Yxy 50.7189, 0.3826, 0.3738

Background



This preview shows how black text looks on a background with the Yxy color 50.7189, 0.3826, 0.3738.



This preview shows how white text looks on a background with the Yxy color 50.7189, 0.3826, 0.3738.

Color Blindness Simulation

Color vision deficiency is a very complex topic, and I could not describe the different causes any better than Wikipedia does, so if you want to learn more, you should check out their [article about color blindness](#).

Dichromacy



Original Color

50.7189, 0.3826, 0.3738

Protanopia

51.0583, 0.3574, 0.3816

Deuteranopia

50.5605, 0.3817, 0.3740



Tritanopia

50.7848, 0.3490, 0.3143

Trichromacy



Original Color

50.7189, 0.3826, 0.3738

Protanomaly

50.8948, 0.3664, 0.3780

Deuteranomaly

50.5605, 0.3817, 0.3740

Tritanomaly

50.5916, 0.3610, 0.3349

Monochromacy



Original Color

50.7189, 0.3826, 0.3738

Achromatopsia

50.8881, 0.3127, 0.3290

Achromatomaly

50.5139, 0.3367, 0.3465

CSS Examples

Text

The CSS property to change the color of the text to Yxy 50.7189, 0.3826, 0.3738 is called "color". The color property can be set on classes, ids or directly on the HTML element.

This example shows how text in the color `rgb(223, 181, 143)` looks like.

```
.text, #text, p{  
    color:rgb(223, 181, 143)  
}
```

If you want to add a text shadow in that color use the text-shadow property, you can generate a text shadow directly with our [CSS Text Shadow Generator](#).

Here you see how black text with a 4 pixel rgb(223, 181, 143) colored shadow looks like.

```
.shadow{ text-shadow: 4px 4px 2px rgb(223, 181, 143) }
```

Border

The CSS property to change the border of an element to Yxy 50.7189, 0.3826, 0.3738 is called "border". The border property can be set on classes, ids or directly on the HTML element.

This example shows the color as border, it can be applied via the CSS property "border" or "border-color".

```
.border, #border, table{ border:4px solid rgb(223, 181, 143) }
```

If only the border color should be changed use the property `border-color`.

```
.border{ border-color:rgb(223, 181, 143) }
```

If you want to add a box shadow in that color use:

Here you see how a box with a 4 pixel `rgb(223, 181, 143)` colored shadow looks like.

```
.boxshadow{ -moz-box-shadow:4px 4px 4px  
4px rgb(223, 181, 143); -webkit-box-  
shadow:4px 4px 4px 4px rgb(223, 181, 143);  
box-shadow:4px 4px 4px 4px rgb(223, 181,  
143) }
```


Background

The CSS property to change the background color of an element to Yxy 50.7189, 0.3826, 0.3738 is called "background". The background property can be set on classes, ids or directly on the HTML element.

```
.background, #background, body{  
background: rgb(223, 181, 143) }
```

If only the background color should be changed can be used:

```
.background{ background-color: rgb(223,  
181, 143) }
```

This example shows the color as background, it is applied via the CSS property "background".

To optimize and compress your CSS code, you can use our [online CSS compressor and optimizer](#) based on csstidy. If you want to create a linear or radial gradient as background or border, check our [CSS Gradient Generator](#).

Hey! You found this booklet interesting? Support Converting Colors with the new Membership Option!

The pro membership hides all ads, plus gives you double the colors in the color bucket, and more awesome pro features!

[Learn more, Memberships starting at \\$2.50/m!](#)

**Follow me
on Twitter!**

@ConvertingColor