

Converting Colors

Yxy(50.9594, 0.3442, 0.3319)

Have a look what the booklet for
Yxy(50.9594, 0.3442, 0.3319)
contains.

Yxy(50.7495, 0.3441, 0.3315)	3
Conversions	4
Details	6
Harmonies	12
Previews	24
Color Blindness Simulation	27
CSS Examples	30

Color

Yxy(50.7495, 0.3441, 0.3315)

Conversions

Conversions Part 1

Format	Color
Hex	D7B5B3
RGB	215, 181, 179
RGB Percent	84%, 71%, 70%
CMY	0.1570, 0.2901, 0.2981
CMYK	0.00, 0.16, 0.17, 0.16
HSL	3°, 31%, 77%
HSV	3°, 17%, 84%
XYZ	52.6784, 50.7495, 49.6626
YIQ	190.9380, 20.9060, 6.5860

Conversions

Conversions Part 2

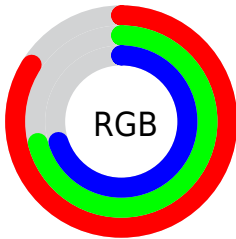
Format	Color
R _Y B	215, 181, 179
Decimal	14136755
CIE Lab	76.53, 11.89, 5.58
CIE LCh	77, 13.130, 25.136
Yxy	50.7495, 0.3441, 0.3315
Android (android.graphics.Color)	4292326835 (0xFFD7B5B3)
YUV	190.9380, -5.8854, 21.1024
Hunter-Lab	71.2387, 7.3266, 8.5343

Details

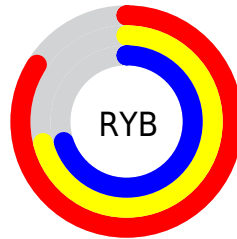
The Yxy color **50.7495, 0.3441, 0.3315** is a light color, and the websafe version is hex **CC9999**. A complement of this color would be **62.0518, 0.2875, 0.3265**, and the grayscale version is **52.0879, 0.3127, 0.3290**.

A 20% lighter version of the original color is **87.8265, 0.3261, 0.3310**, and **24.4183, 0.3536, 0.3323** is the 20% darker color. If you saturate the color by 10%, you get **42.2889, 0.3690, 0.3331**, and if you desaturate by 10%, it is **60.5518, 0.3240, 0.3300**.

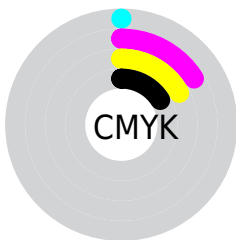
Distribution



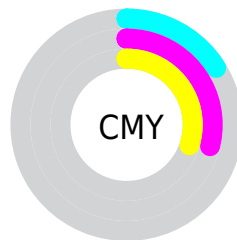
- Red (84%)
- Green (71%)
- Blue (70%)



- Red (84%)
- Yellow (71%)
- Blue (70%)



- Cyan (0%)
- Magenta (16%)
- Yellow (17%)
- Black (16%)




- Cyan (16%)
- Magenta (29%)
- Yellow (30%)

Brightness & Saturation Gradients


These gradients show how the Yxy color 50.7495, 0.3441, 0.3315 changes by changing the brightness by 10 percent. The first figure shows a shift by +10% for each color and the second figure -10%.

Similar to the brightness gradients but the following saturation gradients show a change of the Yxy color 50.7495, 0.3441, 0.3315 by changing the saturation by 10% instead.

 50.7495, 0.3441,
0.3315

 50.7495, 0.3441,
0.3315


389.5898, 0.3285,
0.3305

 36.0093, 0.3479,
0.3317


 91.2844, 0.3385,
0.3312

 24.4414, 0.3529,
0.3319


117.8478, 0.3364,
0.3310

 15.6614, 0.3594,
0.3322


149.1212, 0.3346,
0.3309

 9.2848, 0.3684,
0.3324

185.4888, 0.3330,
0.3308

 4.9274, 0.3817,
0.3326

227.3350, 0.3317,
0.3307

 2.2047, 0.4033,
0.3324

275.0444, 0.3305,

 0.7226, 0.4679,

0.3306

0.3435

329.0011, 0.3295,
0.3305

0.0000, 0.0000,
0.0000

50.7495, 0.3441,
0.3315

50.7495, 0.3441,
0.3315

42.2889, 0.3690,
0.3331

60.5518, 0.3240,
0.3300

35.1052, 0.3996,
0.3348

71.7433, 0.3078,
0.3286

29.1385, 0.4364,
0.3363

84.3777, 0.2947,
0.3273

24.3212, 0.4791,
0.3374

93.1832, 0.2888,
0.3289

20.5795, 0.5254,
0.3378

■ 17.8307, 0.5706,
0.3372

■ 15.9802, 0.6080,
0.3355

■ 14.9144, 0.6315,
0.3330

■ 14.7082, 0.6367,
0.3327

Harmonies

Analogous

The Analogous color harmony consists of three colors that are next to each other on the color wheel.



50.7495, 0.3315, 0.3166



50.7495, 0.3441, 0.3315



50.7495, 0.3480, 0.3463

Triad

The Triadic color harmony groups three colors that are evenly spaced from another and form a triangle on the color wheel.



50.7495, 0.3441, 0.3315



50.7495, 0.3107, 0.3549



50.7495, 0.2837, 0.3010

Complementary

The Complementary color scheme is a pair of colors which are on the opposite of each other on the color wheel.



50.7495, 0.3441, 0.3315



62.0518, 0.2875, 0.3265

Split Complementary

Split-complementary colors differ from the complementary color scheme. The scheme consists of three colors, the original color and two neighbors of the complement color.



50.7495, 0.2786, 0.3103



50.7495, 0.3441, 0.3315



50.7495, 0.2939, 0.3417

Square

The Square scheme is like the rectangle color scheme, but the four colors are evenly spaced on the color wheel.



50.7495, 0.3441, 0.3315



50.7495, 0.3284, 0.3605



50.7495, 0.2823, 0.3252



50.7495, 0.2965, 0.2992

Rectangle

The Rectangle color scheme consists of four colors that form a rectangle on the color wheel.



50.7495, 0.3441, 0.3315



50.7495, 0.3452, 0.3541



50.7495, 0.2823, 0.3252



50.7495, 0.2811, 0.3034

Sweetspot

The Sweet Spot groups the original color and five complimentary colors.



50.7518, 0.3441, 0.3315



91.7672, 0.3210, 0.3297



51.4935, 0.3161, 0.2898



19.4034, 0.3223, 0.3298



0.0000, 0.0000, 0.0000



21.4041, 0.3127, 0.3290

Same Dimension

The Same Dimension uses a secret algorithm to generate beautiful new colors.



50.7518, 0.3441, 0.3315



70.1811, 0.3521, 0.3321



58.4444, 0.3407, 0.3523



12.5317, 0.3290, 0.3304



8.8496, 0.6356, 0.3335



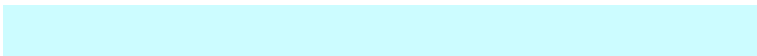
0.5741, 0.6221, 0.3442

Inverse Universe

The Inverse Universe completely reimagines the original color for something new.



62.0518, 0.2875, 0.3265



89.7615, 0.2825, 0.3259



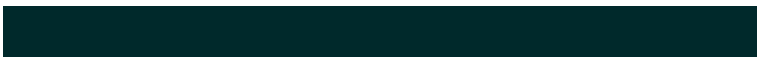
53.6008, 0.2865, 0.3046



13.9826, 0.2983, 0.3276



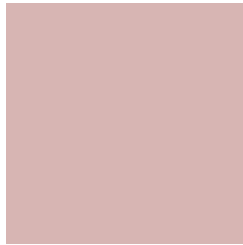
28.5097, 0.2199, 0.3115



1.7568, 0.2208, 0.3147

Previews

White Background



This preview shows how the Yxy color 50.7495, 0.3441, 0.3315 looks on a white background.

Color Contrast Check

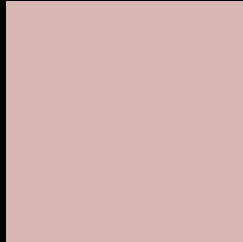
Large Text (above 18pt) WCAG AA × Fail

Any Text WCAG AA × Fail

Large Text (above 18pt) WCAG AAA × Fail

Any Text WCAG AAA × Fail

Black Background



This preview shows how the Yxy color 50.7495, 0.3441, 0.3315 looks on a black background.

Color Contrast Check

Large Text (above 18pt) WCAG AA ✓ Pass

Any Text WCAG AA ✓ Pass

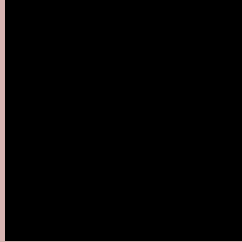
Large Text (above 18pt) WCAG AAA ✓ Pass

Any Text WCAG AAA ✓ Pass

If you want to check with other color combinations, try the [Color Contrast Checker](#).

Yxy 50.7495, 0.3441, 0.3315

Background



This preview shows how black text looks on a background with the Yxy color 50.7495, 0.3441, 0.3315.



This preview shows how white text looks on a background with the Yxy color 50.7495, 0.3441, 0.3315.

Color Blindness Simulation

Color vision deficiency is a very complex topic, and I could not describe the different causes any better than Wikipedia does, so if you want to learn more, you should check out their [article about color blindness](#).

Dichromacy



Original Color

50.7495, 0.3441, 0.3315

Protanopia

50.8547, 0.3216, 0.3353

Deuteranopia

50.9705, 0.3402, 0.3339



Tritanopia

50.8422, 0.3343, 0.3127

Trichromacy



Original Color

50.7495, 0.3441, 0.3315

Protanomaly

50.6319, 0.3296, 0.3327

Deuteranomaly

50.7076, 0.3413, 0.3327

Tritanomaly

50.8723, 0.3375, 0.3196

Monochromacy



Original Color

50.7495, 0.3441, 0.3315

Achromatopsia

52.0996, 0.3127, 0.3290

Achromatomaly

51.4079, 0.3236, 0.3290

CSS Examples

Text

The CSS property to change the color of the text to Yxy 50.7495, 0.3441, 0.3315 is called "color". The color property can be set on classes, ids or directly on the HTML element.

This example shows how text in the color `rgb(215, 181, 179)` looks like.

```
.text, #text, p{  
    color:rgb(215, 181, 179)  
}
```

If you want to add a text shadow in that color use the text-shadow property, you can generate a text shadow directly with our [CSS Text Shadow Generator](#).

Here you see how black text with a 4 pixel rgb(215, 181, 179) colored shadow looks like.

```
.shadow{ text-shadow: 4px 4px 2px rgb(215, 181, 179) }
```

Border

The CSS property to change the border of an element to Yxy 50.7495, 0.3441, 0.3315 is called "border". The border property can be set on classes, ids or directly on the HTML element.

This example shows the color as border, it can be applied via the CSS property "border" or "border-color".

```
.border, #border, table{ border:4px solid rgb(215, 181, 179) }
```

If only the border color should be changed use the property `border-color`.

```
.border{ border-color:rgb(215, 181, 179) }
```

If you want to add a box shadow in that color use:

Here you see how a box with a 4 pixel `rgb(215, 181, 179)` colored shadow looks like.

```
.boxshadow{ -moz-box-shadow:4px 4px 4px  
4px rgb(215, 181, 179); -webkit-box-  
shadow:4px 4px 4px 4px rgb(215, 181, 179);  
box-shadow:4px 4px 4px 4px rgb(215, 181,  
179) }
```


Background

The CSS property to change the background color of an element to Yxy 50.7495, 0.3441, 0.3315 is called "background". The background property can be set on classes, ids or directly on the HTML element.

```
.background, #background, body{  
background: rgb(215, 181, 179) }
```

If only the background color should be changed can be used:

```
.background{ background-color: rgb(215,  
181, 179) }
```

This example shows the color as background, it is applied via the CSS property "background".

To optimize and compress your CSS code, you can use our [online CSS compressor and optimizer](#) based on csstidy. If you want to create a linear or radial gradient as background or border, check our [CSS Gradient Generator](#).

Hey! You found this booklet interesting? Support Converting Colors with the new Membership Option!

The pro membership hides all ads, plus gives you double the colors in the color bucket, and more awesome pro features!

[Learn more, Memberships starting at \\$2.50/m!](#)

**Follow me
on Twitter!**

@ConvertingColor