

Converting Colors

$Yxy(51.0380, 0.3382, 0.3232)$

Have a look what the booklet for
Yxy(51.0380, 0.3382, 0.3232)
contains.

Yxy(51.0400, 0.3382, 0.3232)	3
<i>Conversions</i>	4
<i>Details</i>	6
<i>Harmonies</i>	12
<i>Previews</i>	24
<i>Color Blindness Simulation</i>	27
<i>CSS Examples</i>	30

Color

Yxy(51.0400, 0.3382, 0.3232)

Conversions

Conversions Part 1

Format	Color
Hex	D7B5BA
RGB	215, 181, 186
RGB Percent	84%, 71%, 73%
CMY	0.1568, 0.2902, 0.2707
CMYK	0.00, 0.16, 0.14, 0.16
HSL	351°, 30%, 78%
HSV	351°, 16%, 84%
XYZ	53.4088, 51.0400, 53.4720
YIQ	191.7360, 18.6590, 8.7630

Conversions

Conversions Part 2

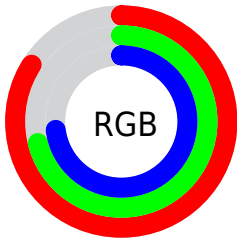
Format	Color
R _Y B	215, 181, 186
Decimal	14136762
CIE Lab	76.70, 13.02, 2.04
CIE LCh	77, 13.175, 8.912
Yxy	51.0400, 0.3382, 0.3232
Android (android.graphics.Color)	4292326842 (0xFFD7B5BA)
YUV	191.7360, -2.8278, 20.4025
Hunter-Lab	71.4423, 8.4190, 5.6332

Details

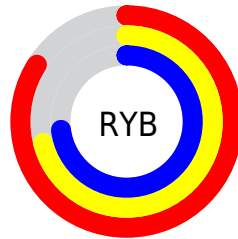
The Yxy color **51.0400, 0.3382, 0.3232** is a light color, and the websafe version is hex **CC9999**. A complement of this color would be **63.0827, 0.2920, 0.3349**, and the grayscale version is **52.5594, 0.3127, 0.3290**.

A 20% lighter version of the original color is **88.2392, 0.3216, 0.3242**, and **24.6054, 0.3453, 0.3212** is the 20% darker color. If you saturate the color by 10%, you get **42.2311, 0.3594, 0.3193**, and if you desaturate by 10%, it is **61.3031, 0.3211, 0.3269**.

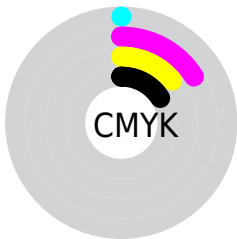
Distribution



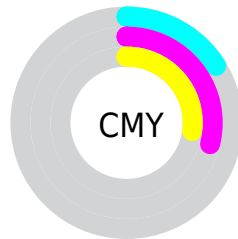
- Red (84%)
- Green (71%)
- Blue (73%)



- Red (84%)
- Yellow (71%)
- Blue (73%)



- Cyan (0%)
- Magenta (16%)
- Yellow (14%)
- Black (16%)




- Cyan (16%)
- Magenta (29%)
- Yellow (27%)

Brightness & Saturation Gradients


These gradients show how the Yxy color 51.0400, 0.3382, 0.3232 changes by changing the brightness by 10 percent. The first figure shows a shift by +10% for each color and the second figure -10%.


Similar to the brightness gradients but the following saturation gradients show a change of the Yxy color 51.0400, 0.3382, 0.3232 by changing the saturation by 10% instead.


 51.0400, 0.3382,
0.3232

 51.0400, 0.3382,
0.3232


390.7192, 0.3256,
0.3261

 36.2404, 0.3413,
0.3225


 91.7139, 0.3337,
0.3243

 24.6200, 0.3453,
0.3215


118.3570, 0.3319,
0.3247

 15.7941, 0.3505,
0.3202


149.7168, 0.3305,
0.3250

 9.3786, 0.3577,
0.3184

186.1776, 0.3292,
0.3253

 4.9889, 0.3683,
0.3157

228.1239, 0.3282,
0.3256

 2.2408, 0.3855,
0.3112

275.9399, 0.3272,

 0.7421, 0.4241,

0.3258

0.3037

330.0103, 0.3264,
0.3260

0.0000, 0.0000,
0.0000

51.0400, 0.3382,
0.3232

51.0400, 0.3382,
0.3232

42.2311, 0.3594,
0.3193

61.3031, 0.3211,
0.3269

34.8042, 0.3856,
0.3153

73.0748, 0.3073,
0.3304

28.6908, 0.4174,
0.3117

86.4151, 0.2962,
0.3336

23.8144, 0.4548,
0.3088

93.1876, 0.2889,
0.3289

20.0903, 0.4968,
0.3074

■ 17.4229, 0.5405,
0.3082

■ 15.7015, 0.5808,
0.3117

■ 14.7899, 0.6119,
0.3177

■ 14.5485, 0.6220,
0.3200

Harmonies

Analogous

The Analogous color harmony consists of three colors that are next to each other on the color wheel.



51.0400, 0.3223, 0.3096



51.0400, 0.3382, 0.3232



51.0400, 0.3472, 0.3385

Triad

The Triadic color harmony groups three colors that are evenly spaced from another and form a triangle on the color wheel.



51.0400, 0.3382, 0.3232



51.0400, 0.3205, 0.3591



51.0400, 0.2798, 0.3052

Complementary

The Complementary color scheme is a pair of colors which are on the opposite of each other on the color wheel.



51.0400, 0.3382, 0.3232



63.0827, 0.2920, 0.3349

Split Complementary

Split-complementary colors differ from the complementary color scheme. The scheme consists of three colors, the original color and two neighbors of the complement color.



51.0400, 0.2795, 0.3179



51.0400, 0.3382, 0.3232



51.0400, 0.3026, 0.3496

Square

The Square scheme is like the rectangle color scheme, but the four colors are evenly spaced on the color wheel.



51.0400, 0.3382, 0.3232



51.0400, 0.3367, 0.3597



51.0400, 0.2877, 0.3343



51.0400, 0.2888, 0.2992

Rectangle

The Rectangle color scheme consists of four colors that form a rectangle on the color wheel.



51.0400, 0.3382, 0.3232



51.0400, 0.3479, 0.3479



51.0400, 0.2877, 0.3343



51.0400, 0.2787, 0.3088

Sweetspot

The Sweet Spot groups the original color and five complimentary colors.



51.0423, 0.3382, 0.3232



91.4515, 0.3199, 0.3272



51.6450, 0.3103, 0.2896



19.3270, 0.3210, 0.3270



0.0000, 0.0000, 0.0000



21.4041, 0.3127, 0.3290

Same Dimension

The Same Dimension uses a secret algorithm to generate beautiful new colors.



51.0423, 0.3382, 0.3232



70.5034, 0.3449, 0.3219



55.8826, 0.3402, 0.3431



12.4500, 0.3268, 0.3256



8.7109, 0.6192, 0.3185



0.5350, 0.5776, 0.2955

Inverse Universe

The Inverse Universe completely reimagines the original color for something new.



51.0423, 0.3382, 0.3232



70.5034, 0.3449, 0.3219



57.4927, 0.2883, 0.3145



12.4500, 0.3268, 0.3256



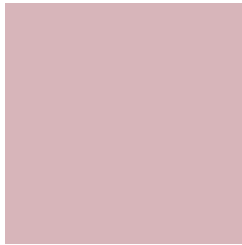
8.7109, 0.6192, 0.3185



0.5350, 0.5776, 0.2955

Previews

White Background



This preview shows how the Yxy color 51.0400, 0.3382, 0.3232 looks on a white background.

Color Contrast Check

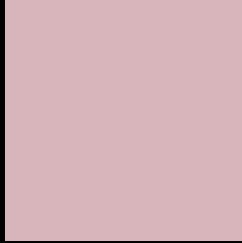
Large Text (above 18pt) WCAG AA × Fail

Any Text WCAG AA × Fail

Large Text (above 18pt) WCAG AAA × Fail

Any Text WCAG AAA × Fail

Black Background



This preview shows how the Yxy color 51.0400, 0.3382, 0.3232 looks on a black background.

Color Contrast Check

Large Text (above 18pt) WCAG AA ✓ Pass

Any Text WCAG AA ✓ Pass

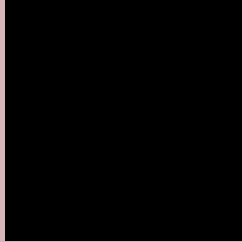
Large Text (above 18pt) WCAG AAA ✓ Pass

Any Text WCAG AAA ✓ Pass

If you want to check with other color combinations, try the [Color Contrast Checker](#).

Yxy 51.0400, 0.3382, 0.3232

Background



This preview shows how black text looks on a background with the Yxy color 51.0400, 0.3382, 0.3232.



This preview shows how white text looks on a background with the Yxy color 51.0400, 0.3382, 0.3232.

Color Blindness Simulation

Color vision deficiency is a very complex topic, and I could not describe the different causes any better than Wikipedia does, so if you want to learn more, you should check out their [article about color blindness](#).

Dichromacy



Original Color

51.0400, 0.3382, 0.3232

Protanopia

51.3194, 0.3144, 0.3278

Deuteranopia

50.9675, 0.3326, 0.3255



Tritanopia

51.1365, 0.3325, 0.3127

Trichromacy



Original Color

51.0400, 0.3382, 0.3232

Protanomaly

51.0713, 0.3221, 0.3254

Deuteranomaly

50.8500, 0.3345, 0.3243

Tritanomaly

51.0030, 0.3350, 0.3161

Monochromacy



Original Color

51.0400, 0.3382, 0.3232

Achromatopsia

52.7115, 0.3127, 0.3290

Achromatomaly

51.9635, 0.3211, 0.3266

CSS Examples

Text

The CSS property to change the color of the text to Yxy 51.0400, 0.3382, 0.3232 is called "color". The color property can be set on classes, ids or directly on the HTML element.

This example shows how text in the color `rgb(215, 181, 186)` looks like.

```
.text, #text, p{  
    color:rgb(215, 181, 186)  
}
```

If you want to add a text shadow in that color use the text-shadow property, you can generate a text shadow directly with our [CSS Text Shadow Generator](#).

Here you see how black text with a 4 pixel rgb(215, 181, 186) colored shadow looks like.

```
.shadow{ text-shadow: 4px 4px 2px rgb(215, 181, 186) }
```

Border

The CSS property to change the border of an element to Yxy 51.0400, 0.3382, 0.3232 is called "border". The border property can be set on classes, ids or directly on the HTML element.

This example shows the color as border, it can be applied via the CSS property "border" or "border-color".

```
.border, #border, table{ border:4px solid rgb(215, 181, 186) }
```

If only the border color should be changed use the property `border-color`.

```
.border{ border-color:rgb(215, 181, 186) }
```

If you want to add a box shadow in that color use:

Here you see how a box with a 4 pixel `rgb(215, 181, 186)` colored shadow looks like.

```
.boxshadow{ -moz-box-shadow:4px 4px 4px  
4px rgb(215, 181, 186); -webkit-box-  
shadow:4px 4px 4px 4px rgb(215, 181, 186);  
box-shadow:4px 4px 4px 4px rgb(215, 181,  
186) }
```


Background

The CSS property to change the background color of an element to Yxy 51.0400, 0.3382, 0.3232 is called "background". The background property can be set on classes, ids or directly on the HTML element.

```
.background, #background, body{  
background: rgb(215, 181, 186) }
```

If only the background color should be changed can be used:

```
.background{ background-color: rgb(215,  
181, 186) }
```

This example shows the color as background, it is applied via the CSS property "background".

To optimize and compress your CSS code, you can use our [online CSS compressor and optimizer](#) based on csstidy. If you want to create a linear or radial gradient as background or border, check our [CSS Gradient Generator](#).

Hey! You found this booklet interesting? Support Converting Colors with the new Membership Option!

The pro membership hides all ads, plus gives you double the colors in the color bucket, and more awesome pro features!

[Learn more, Memberships starting at \\$2.50/m!](#)

**Follow me
on Twitter!**

@ConvertingColor