

Converting Colors

$Yxy(51.0541, 0.3459, 0.3315)$

Have a look what the booklet for
Yxy(51.0541, 0.3459, 0.3315)
contains.

| | |
|--|----|
| Yxy(51.0541, 0.3459, 0.3315) | 3 |
| <i>Conversions</i> | 4 |
| <i>Details</i> | 6 |
| <i>Harmonies</i> | 12 |
| <i>Previews</i> | 24 |
| <i>Color Blindness Simulation</i> | 27 |
| <i>CSS Examples</i> | 30 |

Color

Yxy(51.0541, 0.3459, 0.3315)

Conversions

Conversions Part 1

| Format | Color |
|-------------|---------------------------|
| Hex | D9B5B3 |
| RGB | 217, 181, 179 |
| RGB Percent | 85%, 71%, 70% |
| CMY | 0.1491, 0.2902, 0.2981 |
| CMYK | 0.00, 0.17, 0.18, 0.15 |
| HSL | 3°, 33%, 78% |
| HSV | 3°, 18%, 85% |
| XYZ | 53.2718, 51.0541, 49.6834 |
| YIQ | 191.5360, 22.0980, 7.0100 |

Conversions

Conversions Part 2

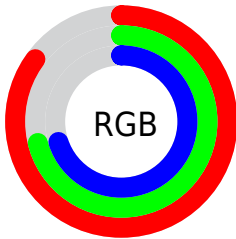
| Format | Color |
|-------------------------------------|-------------------------------|
| R _Y B | 217, 181, 179 |
| Decimal | 14267827 |
| CIE Lab | 76.71, 12.63, 5.87 |
| CIE LCh | 77, 13.926, 24.949 |
| Yxy | 51.0541, 0.3459, 0.3315 |
| Android (android.graphics.Color) | 4292457907 (0xFFD9B5B3) |
| YUV | 191.5360, -6.1802, 22.3319 |
| Hunter-Lab | 71.4522, 8.0411, 8.7899 |

Details

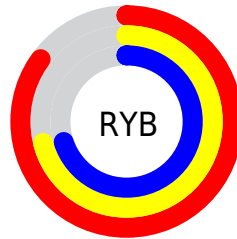
The Yxy color **51.0541, 0.3459, 0.3315** is a light color, and the websafe version is hex **CC9999**. A complement of this color would be **63.1709, 0.2863, 0.3265**, and the grayscale version is **52.4549, 0.3127, 0.3290**.

A 20% lighter version of the original color is **87.8265, 0.3261, 0.3310**, and **24.6261, 0.3560, 0.3323** is the 20% darker color. If you saturate the color by 10%, you get **42.4996, 0.3713, 0.3331**, and if you desaturate by 10%, it is **60.9828, 0.3254, 0.3300**.

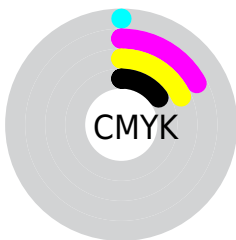
Distribution



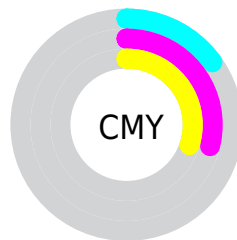
- Red (85%)
- Green (71%)
- Blue (70%)



- Red (85%)
- Yellow (71%)
- Blue (70%)



- Cyan (0%)
- Magenta (17%)
- Yellow (18%)
- Black (15%)





- Cyan (15%)
- Magenta (29%)
- Yellow (30%)

Brightness & Saturation Gradients


These gradients show how the Yxy color 51.0541, 0.3459, 0.3315 changes by changing the brightness by 10 percent. The first figure shows a shift by +10% for each color and the second figure -10%.


Similar to the brightness gradients but the following saturation gradients show a change of the Yxy color 51.0541, 0.3459, 0.3315 by changing the saturation by 10% instead.


 51.0541, 0.3459,
0.3315

 51.0541, 0.3459,
0.3315

390.7739, 0.3295,
0.3305

 36.2517, 0.3500,
0.3317


 91.7347, 0.3400,
0.3312

 24.6286, 0.3552,
0.3319


118.3817, 0.3377,
0.3310

 15.8006, 0.3620,
0.3321


149.7457, 0.3358,
0.3309

 9.3832, 0.3715,
0.3323

186.2110, 0.3342,
0.3308

 4.9919, 0.3855,
0.3324

228.1621, 0.3328,
0.3307

 2.2425, 0.4081,
0.3320

275.9834, 0.3315,

 0.7430, 0.4735,

0.3306

0.3427

330.0592, 0.3304,
0.3305

0.0000, 0.0000,
0.0000

51.0541, 0.3459,
0.3315

51.0541, 0.3459,
0.3315

42.4996, 0.3713,
0.3331

60.9828, 0.3254,
0.3300

35.2522, 0.4024,
0.3346

72.3351, 0.3089,
0.3287

29.2497, 0.4398,
0.3360

85.1667, 0.2956,
0.3274

24.4219, 0.4830,
0.3370

93.4902, 0.2900,
0.3289

20.6919, 0.5296,
0.3374

■ 17.9735, 0.5745,
0.3368

■ 16.1675, 0.6109,
0.3350

■ 15.1535, 0.6331,
0.3327

■ 15.0034, 0.6369,
0.3325

Harmonies

Analogous

The Analogous color harmony consists of three colors that are next to each other on the color wheel.



51.0541, 0.3325, 0.3158



51.0541, 0.3459, 0.3315



51.0541, 0.3501, 0.3471

Triad

The Triadic color harmony groups three colors that are evenly spaced from another and form a triangle on the color wheel.



51.0541, 0.3459, 0.3315



51.0541, 0.3107, 0.3565



51.0541, 0.2820, 0.2995

Complementary

The Complementary color scheme is a pair of colors which are on the opposite of each other on the color wheel.



51.0541, 0.3459, 0.3315



63.1709, 0.2863, 0.3265

Split Complementary

Split-complementary colors differ from the complementary color scheme. The scheme consists of three colors, the original color and two neighbors of the complement color.



51.0541, 0.2767, 0.3093



51.0541, 0.3459, 0.3315



51.0541, 0.2929, 0.3426

Square

The Square scheme is like the rectangle color scheme, but the four colors are evenly spaced on the color wheel.



51.0541, 0.3459, 0.3315



51.0541, 0.3294, 0.3623



51.0541, 0.2806, 0.3250



51.0541, 0.2955, 0.2976

Rectangle

The Rectangle color scheme consists of four colors that form a rectangle on the color wheel.



51.0541, 0.3459, 0.3315



51.0541, 0.3471, 0.3555



51.0541, 0.2806, 0.3250



51.0541, 0.2792, 0.3019

Sweetspot

The Sweet Spot groups the original color and five complimentary colors.



51.0564, 0.3459, 0.3315



91.7459, 0.3210, 0.3297



51.8935, 0.3162, 0.2879



19.3982, 0.3223, 0.3298



0.0000, 0.0000, 0.0000



21.4041, 0.3127, 0.3290

Same Dimension

The Same Dimension uses a secret algorithm to generate beautiful new colors.



51.0564, 0.3459, 0.3315



68.8320, 0.3546, 0.3321



59.2598, 0.3422, 0.3534



13.1625, 0.3290, 0.3303



9.1310, 0.6359, 0.3333



0.6318, 0.6237, 0.3430

Inverse Universe

The Inverse Universe completely reimagines the original color for something new.



63.1709, 0.2863, 0.3265



89.4080, 0.2811, 0.3259



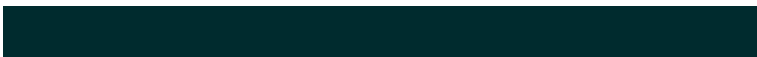
54.1088, 0.2852, 0.3033



14.7041, 0.2982, 0.3277



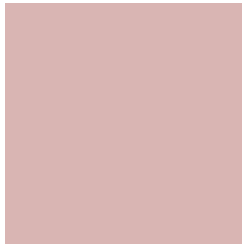
29.6321, 0.2201, 0.3123



1.9570, 0.2209, 0.3152

Previews

White Background



This preview shows how the Yxy color 51.0541, 0.3459, 0.3315 looks on a white background.

Color Contrast Check

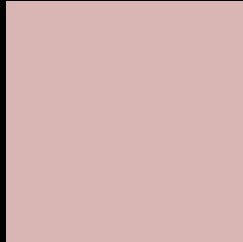
Large Text (above 18pt) WCAG AA × Fail

Any Text WCAG AA × Fail

Large Text (above 18pt) WCAG AAA × Fail

Any Text WCAG AAA × Fail

Black Background



This preview shows how the Yxy color 51.0541, 0.3459, 0.3315 looks on a black background.

Color Contrast Check

Large Text (above 18pt) WCAG AA ✓ Pass

Any Text WCAG AA ✓ Pass

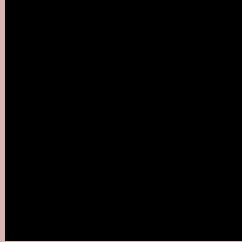
Large Text (above 18pt) WCAG AAA ✓ Pass

Any Text WCAG AAA ✓ Pass

If you want to check with other color combinations, try the [Color Contrast Checker](#).

Yxy 51.0541, 0.3459, 0.3315

Background



This preview shows how black text looks on a background with the Yxy color 51.0541, 0.3459, 0.3315.



This preview shows how white text looks on a background with the Yxy color 51.0541, 0.3459, 0.3315.

Color Blindness Simulation

Color vision deficiency is a very complex topic, and I could not describe the different causes any better than Wikipedia does, so if you want to learn more, you should check out their [article about color blindness](#).

Dichromacy



Original Color

51.0541, 0.3459, 0.3315

Protanopia

51.2834, 0.3215, 0.3365

Deuteranopia

51.1187, 0.3411, 0.3339



Tritanopia

51.1505, 0.3361, 0.3128

Trichromacy



Original Color

51.0541, 0.3459, 0.3315

Protanomaly

51.0518, 0.3294, 0.3340

Deuteranomaly

51.0067, 0.3430, 0.3327

Tritanomaly

51.1788, 0.3393, 0.3197

Monochromacy



Original Color

51.0541, 0.3459, 0.3315

Achromatopsia

52.7115, 0.3127, 0.3290

Achromatomaly

51.9718, 0.3243, 0.3303

CSS Examples

Text

The CSS property to change the color of the text to Yxy 51.0541, 0.3459, 0.3315 is called "color". The color property can be set on classes, ids or directly on the HTML element.

This example shows how text in the color `rgb(217, 181, 179)` looks like.

```
.text, #text, p{  
    color:rgb(217, 181, 179)  
}
```

If you want to add a text shadow in that color use the text-shadow property, you can generate a text shadow directly with our [CSS Text Shadow Generator](#).

Here you see how black text with a 4 pixel rgb(217, 181, 179) colored shadow looks like.

```
.shadow{ text-shadow: 4px 4px 2px rgb(217, 181, 179) }
```

Border

The CSS property to change the border of an element to Yxy 51.0541, 0.3459, 0.3315 is called "border". The border property can be set on classes, ids or directly on the HTML element.

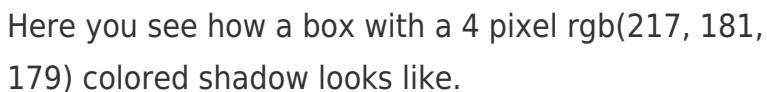
This example shows the color as border, it can be applied via the CSS property "border" or "border-color".

```
.border, #border, table{ border:4px solid rgb(217, 181, 179) }
```

If only the border color should be changed use the property `border-color`.

```
.border{ border-color:rgb(217, 181, 179) }
```

If you want to add a box shadow in that color use:



Here you see how a box with a 4 pixel `rgb(217, 181, 179)` colored shadow looks like.

```
.boxshadow{ -moz-box-shadow:4px 4px 4px  
4px rgb(217, 181, 179); -webkit-box-  
shadow:4px 4px 4px 4px rgb(217, 181, 179);  
box-shadow:4px 4px 4px 4px rgb(217, 181,  
179) }
```


Background

The CSS property to change the background color of an element to Yxy 51.0541, 0.3459, 0.3315 is called "background". The background property can be set on classes, ids or directly on the HTML element.

```
.background, #background, body{  
background: rgb(217, 181, 179) }
```

If only the background color should be changed can be used:

```
.background{ background-color: rgb(217,  
181, 179) }
```

This example shows the color as background, it is applied via the CSS property "background".

To optimize and compress your CSS code, you can use our [online CSS compressor and optimizer](#) based on csstidy. If you want to create a linear or radial gradient as background or border, check our [CSS Gradient Generator](#).

Hey! You found this booklet interesting? Support Converting Colors with the new Membership Option!

The pro membership hides all ads, plus gives you double the colors in the color bucket, and more awesome pro features!

[Learn more, Memberships starting at \\$2.50/m!](#)

**Follow me
on Twitter!**

@ConvertingColor