

Converting Colors

Yxy(51.2695, 0.3270, 0.3269)

Have a look what the booklet for
Yxy(51.2695, 0.3270, 0.3269)
contains.

Yxy(51.1231, 0.3272, 0.3266)	3
Conversions	4
Details	6
Harmonies	12
Previews	24
Color Blindness Simulation	27
CSS Examples	30

Color

Yxy(51.1231, 0.3272, 0.3266)

Conversions

Conversions Part 1

Format	Color
Hex	CCB9BB
RGB	204, 185, 187
RGB Percent	80%, 73%, 73%
CMY	0.2001, 0.2745, 0.2666
CMYK	0.00, 0.09, 0.08, 0.20
HSL	354°, 16%, 76%
HSV	354°, 9%, 80%
XYZ	51.2170, 51.1231, 54.1911
YIQ	190.9090, 10.6820, 4.6500

Conversions

Conversions Part 2

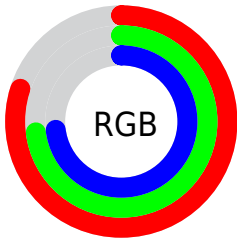
Format	Color
R_{YB}	204, 185, 187
Decimal	13416891
CIE Lab	76.75, 7.08, 1.42
CIE LCh	77, 7.218, 11.374
Yxy	51.1231, 0.3272, 0.3266
Android (android.graphics.Color)	4291606971 (0xFFCCB9BB)
YUV	190.9090, -1.9271, 11.4808
Hunter-Lab	71.5004, 2.7370, 5.1136

Details

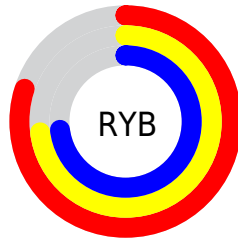
The Yxy color **51.1231, 0.3272, 0.3266** is a light color, and the websafe version is hex **CCCCCC**. A complement of this color would be **57.7536, 0.2999, 0.3314**, and the grayscale version is **52.0518, 0.3127, 0.3290**.

A 20% lighter version of the original color is **90.6417, 0.3207, 0.3271**, and **24.7078, 0.3314, 0.3258** is the 20% darker color. If you saturate the color by 10%, you get **42.4614, 0.3464, 0.3239**, and if you desaturate by 10%, it is **61.1129, 0.3117, 0.3292**.

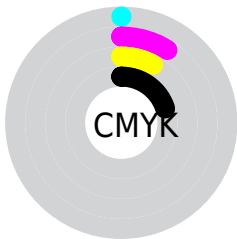
Distribution



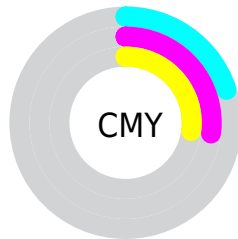
- Red (80%)
- Green (73%)
- Blue (73%)



- Red (80%)
- Yellow (73%)
- Blue (73%)



- Cyan (0%)
- Magenta (9%)
- Yellow (8%)
- Black (20%)





- Cyan (20%)
- Magenta (27%)
- Yellow (27%)

Brightness & Saturation Gradients

These gradients show how the Yxy color 51.1231, 0.3272, 0.3266 changes by changing the brightness by 10 percent. The first figure shows a shift by +10% for each color and the second figure -10%.


Similar to the brightness gradients but the following saturation gradients show a change of the Yxy color 51.1231, 0.3272, 0.3266 by changing the saturation by 10% instead.


 51.1231, 0.3272,
0.3266

 51.1231, 0.3272,
0.3266

391.0419, 0.3201,
0.3278

 36.3066, 0.3290,
0.3263

 91.8367, 0.3246,
0.3270

 24.6711, 0.3312,
0.3259


118.5026, 0.3237,
0.3272

 15.8322, 0.3342,
0.3254


149.8871, 0.3228,
0.3274

 9.4055, 0.3383,
0.3246

186.3745, 0.3221,
0.3275

 5.0066, 0.3443,
0.3235

228.3493, 0.3215,
0.3276

 2.2511, 0.3540,
0.3216

276.1959, 0.3210,

 0.7477, 0.3768,

0.3277

0.3187

330.2986, 0.3205,
0.3277

0.0000, 0.0000,
0.0000

51.1231, 0.3272,
0.3266

51.1231, 0.3272,
0.3266

42.4614, 0.3464,
0.3239

61.1129, 0.3117,
0.3292

35.0654, 0.3703,
0.3210

72.4763, 0.2993,
0.3315

28.8780, 0.3997,
0.3182

85.2651, 0.2892,
0.3337

23.8347, 0.4350,
0.3158

91.5742, 0.2827,
0.3289

19.8653, 0.4759,
0.3142

■ 16.8918, 0.5205,
0.3139

■ 14.8255, 0.5644,
0.3154

■ 13.5623, 0.6016,
0.3190

■ 12.9266, 0.6271,
0.3234

Harmonies

Analogous

The Analogous color harmony consists of three colors that are next to each other on the color wheel.



51.1231, 0.3188, 0.3188



51.1231, 0.3272, 0.3266



51.1231, 0.3317, 0.3351

Triad

The Triadic color harmony groups three colors that are evenly spaced from another and form a triangle on the color wheel.



51.1231, 0.3272, 0.3266



51.1231, 0.3163, 0.3450



51.1231, 0.2948, 0.3156

Complementary

The Complementary color scheme is a pair of colors which are on the opposite of each other on the color wheel.



51.1231, 0.3272, 0.3266



57.7536, 0.2999, 0.3314

Split Complementary

Split-complementary colors differ from the complementary color scheme. The scheme consists of three colors, the original color and two neighbors of the complement color.



51.1231, 0.2942, 0.3224



51.1231, 0.3272, 0.3266



51.1231, 0.3065, 0.3396

Square

The Square scheme is like the rectangle color scheme, but the four colors are evenly spaced on the color wheel.



51.1231, 0.3272, 0.3266



51.1231, 0.3253, 0.3459



51.1231, 0.2984, 0.3312



51.1231, 0.3002, 0.3124

Rectangle

The Rectangle color scheme consists of four colors that form a rectangle on the color wheel.



51.1231, 0.3272, 0.3266



51.1231, 0.3318, 0.3402



51.1231, 0.2984, 0.3312



51.1231, 0.2940, 0.3175

Sweetspot

The Sweet Spot groups the original color and five complimentary colors.



51.1253, 0.3272, 0.3266



94.7830, 0.3171, 0.3282



51.5849, 0.3120, 0.3063



19.9966, 0.3184, 0.3280



0.0000, 0.0000, 0.0000



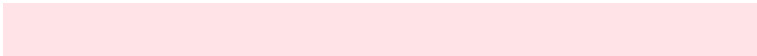
21.4041, 0.3127, 0.3290

Same Dimension

The Same Dimension uses a secret algorithm to generate beautiful new colors.



51.1253, 0.3272, 0.3266



81.8794, 0.3304, 0.3261



54.1605, 0.3279, 0.3378



11.2326, 0.3274, 0.3266



8.1222, 0.6264, 0.3224



0.4257, 0.5888, 0.3017

Inverse Universe

The Inverse Universe completely reimagines the original color for something new.



51.1253, 0.3272, 0.3266



81.8794, 0.3304, 0.3261



54.4738, 0.2985, 0.3200



11.2326, 0.3274, 0.3266



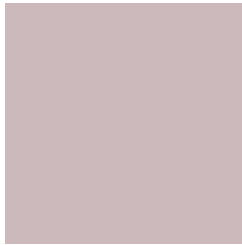
8.1222, 0.6264, 0.3224



0.4257, 0.5888, 0.3017

Previews

White Background



This preview shows how the Yxy color 51.1231, 0.3272, 0.3266 looks on a white background.

Color Contrast Check

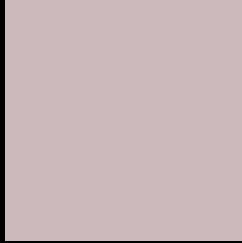
Large Text (above 18pt) WCAG AA × Fail

Any Text WCAG AA × Fail

Large Text (above 18pt) WCAG AAA × Fail

Any Text WCAG AAA × Fail

Black Background



This preview shows how the Yxy color 51.1231, 0.3272, 0.3266 looks on a black background.

Color Contrast Check

Large Text (above 18pt) WCAG AA ✓ Pass

Any Text WCAG AA ✓ Pass

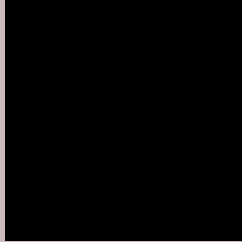
Large Text (above 18pt) WCAG AAA ✓ Pass

Any Text WCAG AAA ✓ Pass

If you want to check with other color combinations, try the [Color Contrast Checker](#).

Yxy 51.1231, 0.3272, 0.3266

Background



This preview shows how black text looks on a background with the Yxy color 51.1231, 0.3272, 0.3266.



This preview shows how white text looks on a background with the Yxy color 51.1231, 0.3272, 0.3266.

Color Blindness Simulation

Color vision deficiency is a very complex topic, and I could not describe the different causes any better than Wikipedia does, so if you want to learn more, you should check out their [article about color blindness](#).

Dichromacy



Original Color

51.1231, 0.3272, 0.3266

Protanopia

51.4068, 0.3160, 0.3290

Deuteranopia

50.8647, 0.3309, 0.3242



Tritanopia

50.9233, 0.3195, 0.3110

Trichromacy



Original Color

51.1231, 0.3272, 0.3266

Protanomaly

51.4676, 0.3202, 0.3290

Deuteranomaly

51.1342, 0.3299, 0.3254

Tritanomaly

51.1552, 0.3226, 0.3170

Monochromacy



Original Color

51.1231, 0.3272, 0.3266

Achromatopsia

52.0996, 0.3127, 0.3290

Achromatomaly

51.8487, 0.3177, 0.3278

CSS Examples

Text

The CSS property to change the color of the text to Yxy 51.1231, 0.3272, 0.3266 is called "color". The color property can be set on classes, ids or directly on the HTML element.

This example shows how text in the color `rgb(204, 185, 187)` looks like.

```
.text, #text, p{  
    color:rgb(204, 185, 187)  
}
```

If you want to add a text shadow in that color use the text-shadow property, you can generate a text shadow directly with our [CSS Text Shadow Generator](#).

Here you see how black text with a 4 pixel rgb(204, 185, 187) colored shadow looks like.

```
.shadow{ text-shadow: 4px 4px 2px rgb(204, 185, 187) }
```

Border

The CSS property to change the border of an element to Yxy 51.1231, 0.3272, 0.3266 is called "border". The border property can be set on classes, ids or directly on the HTML element.

This example shows the color as border, it can be applied via the CSS property "border" or "border-color".

```
.border, #border, table{ border:4px solid rgb(204, 185, 187) }
```

If only the border color should be changed use the property border-color.

```
.border{ border-color:rgb(204, 185, 187) }
```

If you want to add a box shadow in that color use:

Here you see how a box with a 4 pixel rgb(204, 185, 187) colored shadow looks like.

```
.boxshadow{ -moz-box-shadow:4px 4px 4px  
4px rgb(204, 185, 187); -webkit-box-  
shadow:4px 4px 4px 4px rgb(204, 185, 187);  
box-shadow:4px 4px 4px 4px rgb(204, 185,  
187) }
```


Background

The CSS property to change the background color of an element to Yxy 51.1231, 0.3272, 0.3266 is called "background". The background property can be set on classes, ids or directly on the HTML element.

```
.background, #background, body{  
background: rgb(204, 185, 187) }
```

If only the background color should be changed can be used:

```
.background{ background-color: rgb(204,  
185, 187) }
```

This example shows the color as background, it is applied via the CSS property "background".

To optimize and compress your CSS code, you can use our [online CSS compressor and optimizer](#) based on csstidy. If you want to create a linear or radial gradient as background or border, check our [CSS Gradient Generator](#).

Hey! You found this booklet interesting? Support Converting Colors with the new Membership Option!

The pro membership hides all ads, plus gives you double the colors in the color bucket, and more awesome pro features!

[Learn more, Memberships starting at \\$2.50/m!](#)

**Follow me
on Twitter!**

@ConvertingColor