

Converting Colors

Yxy(51.4435, 0.3477, 0.3545)

Have a look what the booklet for
Yxy(51.4435, 0.3477, 0.3545)
contains.

Yxy(51.7037, 0.3476, 0.3547)	3
<i>Conversions</i>	4
<i>Details</i>	6
<i>Harmonies</i>	12
<i>Previews</i>	24
<i>Color Blindness Simulation</i>	27
<i>CSS Examples</i>	30

Color

Yxy(51.7037, 0.3476, 0.3547)

Conversions

Conversions Part 1

Format	Color
Hex	D0BBA6
RGB	208, 187, 166
RGB Percent	82%, 73%, 65%
CMY	0.1843, 0.2667, 0.3489
CMYK	0.00, 0.10, 0.20, 0.18
HSL	30°, 31%, 73%
HSV	30°, 20%, 82%
XYZ	50.6688, 51.7037, 43.3950
YIQ	190.8850, 19.2570, -2.0790

Conversions

Conversions Part 2

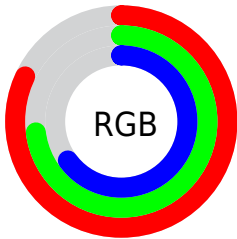
Format	Color
R _Y B	208, 208, 166
Decimal	13679526
CIE Lab	77.10, 4.11, 13.34
CIE LCh	77, 13.960, 72.871
Yxy	51.7037, 0.3476, 0.3547
Android (android.graphics.Color)	4291869606 (0xFFD0BBA6)
YUV	190.8850, -12.2683, 15.0099
Hunter-Lab	71.9053, -0.0525, 14.5521

Details

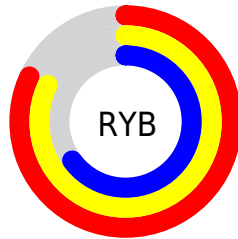
The Yxy color **51.7037, 0.3476, 0.3547** is a light color, and the websafe version is hex **CCCCCC**. A complement of this color would be **48.2165, 0.2811, 0.3019**, and the grayscale version is **52.0967, 0.3127, 0.3290**.

A 20% lighter version of the original color is **90.5816, 0.3343, 0.3507**, and **25.0374, 0.3570, 0.3619** is the 20% darker color. If you saturate the color by 10%, you get **46.7462, 0.3685, 0.3682**, and if you desaturate by 10%, it is **57.1094, 0.3292, 0.3416**.

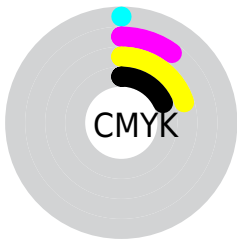
Distribution



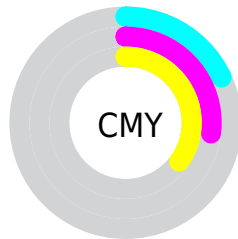
- Red (82%)
- Green (73%)
- Blue (65%)



- Red (82%)
- Yellow (82%)
- Blue (65%)



- Cyan (0%)
- Magenta (10%)
- Yellow (20%)
- Black (18%)




- Cyan (18%)
- Magenta (27%)
- Yellow (35%)

Brightness & Saturation Gradients


These gradients show how the Yxy color 51.7037, 0.3476, 0.3547 changes by changing the brightness by 10 percent. The first figure shows a shift by +10% for each color and the second figure -10%.


Similar to the brightness gradients but the following saturation gradients show a change of the Yxy color 51.7037, 0.3476, 0.3547 by changing the saturation by 10% instead.

 51.7037, 0.3476,
0.3547


 51.7037, 0.3476,
0.3547


393.2917, 0.3304,
0.3422

 36.7690, 0.3518,
0.3577


 92.6941, 0.3414,
0.3503

 25.0287, 0.3572,
0.3615


 119.5186, 0.3391,
0.3486

 16.0984, 0.3642,
0.3663


151.0751, 0.3371,
0.3471

 9.5938, 0.3739,
0.3729

187.7480, 0.3354,
0.3459

 5.1305, 0.3879,
0.3822

229.9217, 0.3339,
0.3448

 2.3240, 0.4099,
0.3961

277.9806, 0.3326,

 0.7864, 0.5188,

0.3438

0.4812

332.3091, 0.3314,
0.3430

0.0000, 0.0000,
0.0000

51.7037, 0.3476,
0.3547

51.7037, 0.3476,
0.3547

46.7462, 0.3685,
0.3682

57.1094, 0.3292,
0.3416

42.2171, 0.3918,
0.3816

62.9684, 0.3130,
0.3292

38.1056, 0.4173,
0.3942

69.2945, 0.2989,
0.3177

34.3974, 0.4444,
0.4049

76.0987, 0.2867,
0.3070

31.0771, 0.4720,
0.4127

82.3860, 0.2840,
0.3122

■ 28.1280, 0.4985,
0.4161

■ 88.6577, 0.2846,
0.3232

■ 25.5315, 0.5222,
0.4143

■ 92.1511, 0.2849,
0.3289

■ 23.2988, 0.5420,
0.4079

Harmonies

Analogous

The Analogous color harmony consists of three colors that are next to each other on the color wheel.



51.7037, 0.3496, 0.3411



51.7037, 0.3476, 0.3547



51.7037, 0.3360, 0.3619

Triad

The Triadic color harmony groups three colors that are evenly spaced from another and form a triangle on the color wheel.



51.7037, 0.3476, 0.3547



51.7037, 0.2847, 0.3322



51.7037, 0.3062, 0.3003

Complementary

The Complementary color scheme is a pair of colors which are on the opposite of each other on the color wheel.



51.7037, 0.3476, 0.3547



48.2165, 0.2811, 0.3019

Split Complementary

Split-complementary colors differ from the complementary color scheme. The scheme consists of three colors, the original color and two neighbors of the complement color.



51.7037, 0.2893, 0.2974



51.7037, 0.3476, 0.3547



51.7037, 0.2772, 0.3151

Square

The Square scheme is like the rectangle color scheme, but the four colors are evenly spaced on the color wheel.



51.7037, 0.3476, 0.3547



51.7037, 0.2996, 0.3489



51.7037, 0.2788, 0.3026



51.7037, 0.3253, 0.3103

Rectangle

The Rectangle color scheme consists of four colors that form a rectangle on the color wheel.



51.7037, 0.3476, 0.3547



51.7037, 0.3247, 0.3617



51.7037, 0.2788, 0.3026



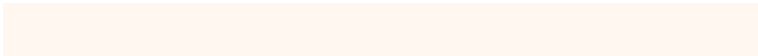
51.7037, 0.3000, 0.2985

Sweetspot

The Sweet Spot groups the original color and five complimentary colors.



51.7060, 0.3476, 0.3547



94.2662, 0.3222, 0.3364



44.3097, 0.3326, 0.3026



20.0467, 0.3233, 0.3373



0.0000, 0.0000, 0.0000



21.4041, 0.3127, 0.3290

Same Dimension

The Same Dimension uses a secret algorithm to generate beautiful new colors.



51.7060, 0.3476, 0.3547



78.6617, 0.3559, 0.3602



60.9404, 0.3431, 0.3781



12.7702, 0.3278, 0.3406



14.7131, 0.5398, 0.4096



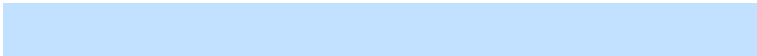
0.9814, 0.5119, 0.4318

Inverse Universe

The Inverse Universe completely reimagines the original color for something new.



48.2165, 0.2811, 0.3019



72.2004, 0.2744, 0.2956



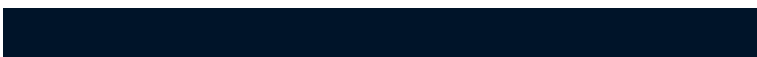
40.1989, 0.2793, 0.2746



12.3810, 0.2982, 0.3171



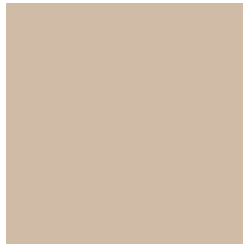
9.2110, 0.1775, 0.1590



0.6737, 0.1868, 0.1923

Previews

White Background



This preview shows how the Yxy color 51.7037, 0.3476, 0.3547 looks on a white background.

Color Contrast Check

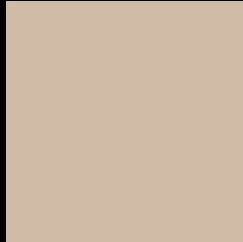
Large Text (above 18pt) WCAG AA × Fail

Any Text WCAG AA × Fail

Large Text (above 18pt) WCAG AAA × Fail

Any Text WCAG AAA × Fail

Black Background



This preview shows how the Yxy color 51.7037, 0.3476, 0.3547 looks on a black background.

Color Contrast Check

Large Text (above 18pt) WCAG AA ✓ Pass

Any Text WCAG AA ✓ Pass

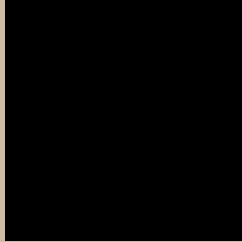
Large Text (above 18pt) WCAG AAA ✓ Pass

Any Text WCAG AAA ✓ Pass

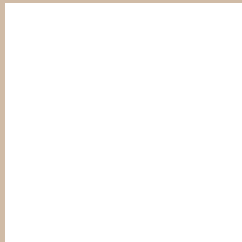
If you want to check with other color combinations, try the [Color Contrast Checker](#).

Yxy 51.7037, 0.3476, 0.3547

Background



This preview shows how black text looks on a background with the Yxy color 51.7037, 0.3476, 0.3547.



This preview shows how white text looks on a background with the Yxy color 51.7037, 0.3476, 0.3547.

Color Blindness Simulation

Color vision deficiency is a very complex topic, and I could not describe the different causes any better than Wikipedia does, so if you want to learn more, you should check out their [article about color blindness](#).

Dichromacy



Original Color

51.7037, 0.3476, 0.3547

Protanopia

51.7962, 0.3375, 0.3565

Deuteranopia

51.4087, 0.3557, 0.3482



Tritanopia

51.8952, 0.3262, 0.3125

Trichromacy



Original Color

51.7037, 0.3476, 0.3547

Protanomaly

51.7418, 0.3411, 0.3563

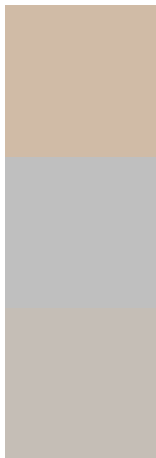
Deuteranomaly

51.3671, 0.3528, 0.3495

Tritanomaly

51.6750, 0.3342, 0.3267

Monochromacy



Original Color

51.7037, 0.3476, 0.3547

Achromatopsia

52.0996, 0.3127, 0.3290

Achromatomaly

52.0746, 0.3247, 0.3389

CSS Examples

Text

The CSS property to change the color of the text to Yxy 51.7037, 0.3476, 0.3547 is called "color". The color property can be set on classes, ids or directly on the HTML element.

This example shows how text in the color `rgb(208, 187, 166)` looks like.

```
.text, #text, p{  
    color:rgb(208, 187, 166)  
}
```

If you want to add a text shadow in that color use the text-shadow property, you can generate a text shadow directly with our [CSS Text Shadow Generator](#).

Here you see how black text with a 4 pixel rgb(208, 187, 166) colored shadow looks like.

```
.shadow{ text-shadow: 4px 4px 2px rgb(208, 187, 166) }
```

Border

The CSS property to change the border of an element to Yxy 51.7037, 0.3476, 0.3547 is called "border". The border property can be set on classes, ids or directly on the HTML element.

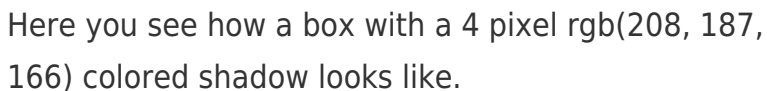
This example shows the color as border, it can be applied via the CSS property "border" or "border-color".

```
.border, #border, table{ border:4px solid rgb(208, 187, 166) }
```

If only the border color should be changed use the property `border-color`.

```
.border{ border-color:rgb(208, 187, 166) }
```

If you want to add a box shadow in that color use:



Here you see how a box with a 4 pixel `rgb(208, 187, 166)` colored shadow looks like.

```
.boxshadow{ -moz-box-shadow:4px 4px 4px 4px rgb(208, 187, 166); -webkit-box-shadow:4px 4px 4px 4px rgb(208, 187, 166); box-shadow:4px 4px 4px 4px rgb(208, 187, 166) }
```


Background

The CSS property to change the background color of an element to Yxy 51.7037, 0.3476, 0.3547 is called "background". The background property can be set on classes, ids or directly on the HTML element.

```
.background, #background, body{  
background: rgb(208, 187, 166) }
```

If only the background color should be changed can be used:

```
.background{ background-color: rgb(208,  
187, 166) }
```

This example shows the color as background, it is applied via the CSS property "background".

To optimize and compress your CSS code, you can use our [online CSS compressor and optimizer](#) based on csstidy. If you want to create a linear or radial gradient as background or border, check our [CSS Gradient Generator](#).

Hey! You found this booklet interesting? Support Converting Colors with the new Membership Option!

The pro membership hides all ads, plus gives you double the colors in the color bucket, and more awesome pro features!

[Learn more, Memberships starting at \\$2.50/m!](#)

**Follow me
on Twitter!**

@ConvertingColor