

# Converting Colors

Yxy(51.4530, 0.3554, 0.3568)

Have a look what the booklet for  
Yxy(51.4530, 0.3554, 0.3568)  
contains.

<b>Yxy(51.4527, 0.3559, 0.3569)</b> .....	3
<b><i>Conversions</i></b> .....	4
<b><i>Details</i></b> .....	6
<b><i>Harmonies</i></b> .....	12
<b><i>Previews</i></b> .....	24
<b><i>Color Blindness Simulation</i></b> .....	27
<b><i>CSS Examples</i></b> .....	30

# Color

**Yxy(51.4527, 0.3559, 0.3569)**

# Conversions

## Conversions Part 1

Format	Color
Hex	D5B9A2
RGB	213, 185, 162
RGB Percent	84%, 73%, 64%
CMY	0.1647, 0.2745, 0.3647
CMYK	0.00, 0.13, 0.24, 0.16
HSL	27°, 38%, 74%
HSV	27°, 24%, 84%
XYZ	51.3085, 51.4527, 41.4044
YIQ	190.7500, 24.0710, -1.2170

# Conversions

## Conversions Part 2

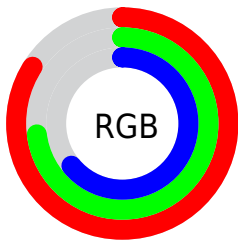
<b>Format</b>	<b>Color</b>
<b>R<sub>YB</sub></b>	213, 204, 162
Decimal	14006690
CIE <sub>Lab</sub>	76.95, 6.46, 15.37
CIE <sub>LCh</sub>	77, 16.669, 67.194
Yxy	51.4527, 0.3559, 0.3569
Android (android.graphics.Color)	4292196770 (0xFFD5B9A2)
YUV	190.7500, -14.1737, 19.5133
Hunter-Lab	71.7305, 2.1518, 15.9880

# Details

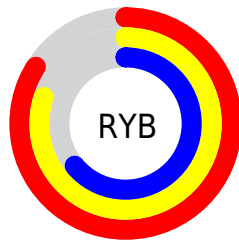
The Yxy color  $51.4527, 0.3559, 0.3569$  is a light color, and the websafe version is hex `FFCCCC`. A complement of this color would be  $49.2994, 0.2752, 0.2994$ , and the grayscale version is  $52.0215, 0.3127, 0.3290$ .

A 20% lighter version of the original color is  $89.1803, 0.3371, 0.3528$ , and  $24.8974, 0.3685, 0.3646$  is the 20% darker color. If you saturate the color by 10%, you get  $46.0701, 0.3785, 0.3692$ , and if you desaturate by 10%, it is  $57.3702, 0.3361, 0.3448$ .

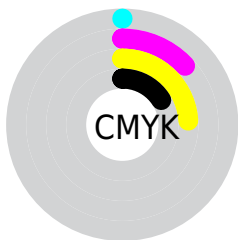
# Distribution



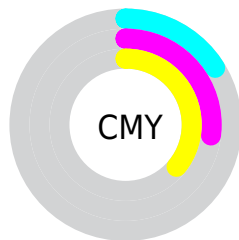
- Red (84%)
- Green (73%)
- Blue (64%)



- Red (84%)
- Yellow (80%)
- Blue (64%)



- Cyan (0%)
- Magenta (13%)
- Yellow (24%)
- Black (16%)




- Cyan (16%)
- Magenta (27%)
- Yellow (36%)

# Brightness & Saturation Gradients

These gradients show how the Yxy color 51.4527, 0.3559, 0.3569 changes by changing the brightness by 10 percent. The first figure shows a shift by +10% for each color and the second figure -10%.


Similar to the brightness gradients but the following saturation gradients show a change of the Yxy color 51.4527, 0.3559, 0.3569 by changing the saturation by 10% instead.




 51.4527, 0.3559,  
0.3569


 51.4527, 0.3559,  
0.3569


392.3201, 0.3346,  
0.3435

 36.5690, 0.3611,  
0.3601


 92.3236, 0.3482,  
0.3521

 24.8740, 0.3678,  
0.3641


 119.0796, 0.3453,  
0.3503

 15.9832, 0.3766,  
0.3692


150.5618, 0.3428,  
0.3488

 9.5123, 0.3885,  
0.3760

187.1546, 0.3407,  
0.3474

 5.0768, 0.4059,  
0.3853

229.2425, 0.3389,  
0.3463

 2.2924, 0.4329,  
0.3986

277.2097, 0.3373,

 0.7697, 0.5363,

0.3452

0.4637

331.4408, 0.3358,  
0.3443

0.0000, 0.0000,  
0.0000

51.4527, 0.3559,  
0.3569

51.4527, 0.3559,  
0.3569

46.0701, 0.3785,  
0.3692

57.3702, 0.3361,  
0.3448

41.1993, 0.4039,  
0.3812

63.8309, 0.3189,  
0.3333

36.8256, 0.4317,  
0.3921

70.8517, 0.3040,  
0.3226

32.9309, 0.4612,  
0.4008

78.4466, 0.2911,  
0.3126

29.4957, 0.4910,  
0.4059

85.7297, 0.2872,  
0.3170

■ 26.4986, 0.5191,  
0.4064

■ 92.8849, 0.2877,  
0.3289

■ 23.9154, 0.5435,  
0.4014

■ 22.5346, 0.5564,  
0.3964

# Harmonies

## Analogous

The Analogous color harmony consists of three colors that are next to each other on the color wheel.



51.4527, 0.3560, 0.3396



51.4527, 0.3559, 0.3569



51.4527, 0.3439, 0.3675

# Triad

The Triadic color harmony groups three colors that are evenly spaced from another and form a triangle on the color wheel.



51.4527, 0.3559, 0.3569



51.4527, 0.2821, 0.3368



51.4527, 0.3006, 0.2936

# Complementary

The Complementary color scheme is a pair of colors which are on the opposite of each other on the color wheel.



51.4527, 0.3559, 0.3569



49.2994, 0.2752, 0.2994

# Split Complementary

Split-complementary colors differ from the complementary color scheme. The scheme consists of three colors, the original color and two neighbors of the complement color.



51.4527, 0.2817, 0.2918



51.4527, 0.3559, 0.3569



51.4527, 0.2713, 0.3158

# Square

The Square scheme is like the rectangle color scheme, but the four colors are evenly spaced on the color wheel.



51.4527, 0.3559, 0.3569



51.4527, 0.3011, 0.3562



51.4527, 0.2712, 0.2996



51.4527, 0.3234, 0.3040



# Rectangle

The Rectangle color scheme consists of four colors that form a rectangle on the color wheel.



51.4527, 0.3559, 0.3569



51.4527, 0.3310, 0.3689



51.4527, 0.2712, 0.2996



51.4527, 0.2936, 0.2919

# Sweetspot

The Sweet Spot groups the original color and five complimentary colors.



51.4550, 0.3559, 0.3569



92.8129, 0.3240, 0.3369



43.7017, 0.3357, 0.2955



19.7373, 0.3250, 0.3376



0.0000, 0.0000, 0.0000



21.4041, 0.3127, 0.3290



# Same Dimension

The Same Dimension uses a secret algorithm to generate beautiful new colors.



51.4550, 0.3559, 0.3569



72.9075, 0.3676, 0.3635



63.0650, 0.3493, 0.3857



13.3346, 0.3280, 0.3396



13.9644, 0.5540, 0.3983



1.0063, 0.5249, 0.4214

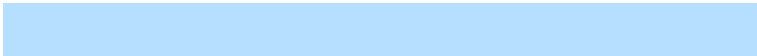


# Inverse Universe

The Inverse Universe completely reimagines the original color for something new.



49.2994, 0.2752, 0.2994



69.0927, 0.2666, 0.2917



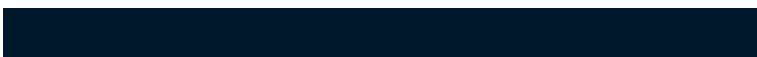
39.2289, 0.2723, 0.2652



13.1268, 0.2982, 0.3182



10.8937, 0.1820, 0.1752

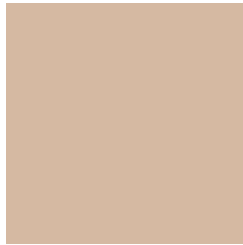


0.8214, 0.1901, 0.2041



# Previews

## White Background



This preview shows how the Yxy color 51.4527, 0.3559, 0.3569 looks on a white background.

## Color Contrast Check

Large Text (above 18pt) WCAG AA × Fail

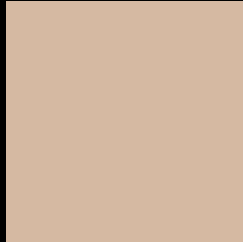
Any Text WCAG AA × Fail

Large Text (above 18pt) WCAG AAA × Fail

Any Text WCAG AAA × Fail



# Black Background



This preview shows how the Yxy color 51.4527, 0.3559, 0.3569 looks on a black background.

## Color Contrast Check

Large Text (above 18pt) WCAG AA ✓ Pass

Any Text WCAG AA ✓ Pass

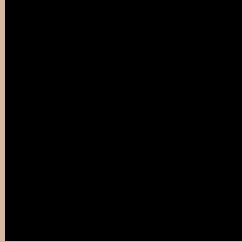
Large Text (above 18pt) WCAG AAA ✓ Pass

Any Text WCAG AAA ✓ Pass

If you want to check with other color combinations, try the [Color Contrast Checker](#).

**Yxy 51.4527, 0.3559, 0.3569**

## **Background**



This preview shows how black text looks on a background with the Yxy color 51.4527, 0.3559, 0.3569.



This preview shows how white text looks on a background with the Yxy color 51.4527, 0.3559, 0.3569.

# Color Blindness Simulation

Color vision deficiency is a very complex topic, and I could not describe the different causes any better than Wikipedia does, so if you want to learn more, you should check out their [article about color blindness](#).

## Dichromacy



### Original Color

51.4527, 0.3559, 0.3569

### Protanopia

51.6494, 0.3407, 0.3616

### Deuteranopia

51.3810, 0.3609, 0.3541



## Tritanopia

51.2893, 0.3333, 0.3127

# Trichromacy



## Original Color

51.4527, 0.3559, 0.3569

## Protanomaly

51.4482, 0.3463, 0.3600

## Deuteranomaly

51.4885, 0.3589, 0.3555

## Tritanomaly

51.4322, 0.3423, 0.3291

# Monochromacy



## Original Color

51.4527, 0.3559, 0.3569

## Achromatopsia

52.0996, 0.3127, 0.3290

## Achromatomaly

51.8326, 0.3281, 0.3402

# CSS Examples

## Text

The CSS property to change the color of the text to Yxy 51.4527, 0.3559, 0.3569 is called "color". The color property can be set on classes, ids or directly on the HTML element.

This example shows how text in the color `rgb(213, 185, 162)` looks like.

```
.text, #text, p{  
    color:rgb(213, 185, 162)  
}
```

If you want to add a text shadow in that color use the text-shadow property, you can generate a text shadow directly with our [CSS Text Shadow Generator](#).

Here you see how black text with a 4 pixel rgb(213, 185, 162) colored shadow looks like.

```
.shadow{ text-shadow: 4px 4px 2px rgb(213, 185, 162) }
```

## Border

The CSS property to change the border of an element to Yxy 51.4527, 0.3559, 0.3569 is called "border". The border property can be set on classes, ids or directly on the HTML element.

This example shows the color as border, it can be applied via the CSS property "border" or "border-color".

```
.border, #border, table{ border:4px solid rgb(213, 185, 162) }
```

If only the border color should be changed use the property `border-color`.

```
.border{ border-color:rgb(213, 185, 162) }
```

If you want to add a box shadow in that color use:

Here you see how a box with a 4 pixel `rgb(213, 185, 162)` colored shadow looks like.

```
.boxshadow{ -moz-box-shadow:4px 4px 4px  
4px rgb(213, 185, 162); -webkit-box-  
shadow:4px 4px 4px 4px rgb(213, 185, 162);  
box-shadow:4px 4px 4px 4px rgb(213, 185,  
162) }
```



# Background

The CSS property to change the background color of an element to Yxy 51.4527, 0.3559, 0.3569 is called "background". The background property can be set on classes, ids or directly on the HTML element.

```
.background, #background, body{  
background: rgb(213, 185, 162) }
```

If only the background color should be changed can be used:

```
.background{ background-color: rgb(213,  
185, 162) }
```

This example shows the color as background, it is applied via the CSS property "background".

To optimize and compress your CSS code, you can use our [online CSS compressor and optimizer](#) based on csstidy. If you want to create a linear or radial gradient as background or border, check our [CSS Gradient Generator](#).

Hey! You found this booklet interesting? Support Converting Colors with the new Membership Option!

The pro membership hides all ads, plus gives you double the colors in the color bucket, and more awesome pro features!

**[Learn more, Memberships starting at \\$2.50/m!](#)**

**Follow me  
on Twitter!**

@ConvertingColor