

Converting Colors

Yxy(51.4586, 0.3392, 0.3394)

Have a look what the booklet for
Yxy(51.4586, 0.3392, 0.3394)
contains.

Yxy(51.2821, 0.3389, 0.3388)	3
Conversions	4
Details	6
Harmonies	12
Previews	24
Color Blindness Simulation	27
CSS Examples	30

Color

Yxy(51.2821, 0.3389, 0.3388)

Conversions

Conversions Part 1

Format	Color
Hex	D0B9B1
RGB	208, 185, 177
RGB Percent	82%, 73%, 69%
CMY	0.1843, 0.2745, 0.3059
CMYK	0.00, 0.11, 0.15, 0.18
HSL	16°, 25%, 75%
HSV	16°, 15%, 82%
XYZ	51.2972, 51.2821, 48.7846
YIQ	190.9650, 16.2760, 2.3880

Conversions

Conversions Part 2

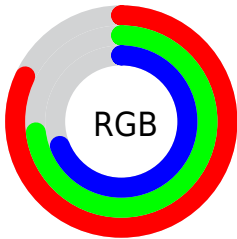
Format	Color
R _Y B	208, 188, 177
Decimal	13679025
CIE Lab	76.85, 6.87, 7.05
CIE LCh	77, 9.844, 45.705
Yxy	51.2821, 0.3389, 0.3388
Android (android.graphics.Color)	4291869105 (0xFFD0B9B1)
YUV	190.9650, -6.8847, 14.9397
Hunter-Lab	71.6115, 2.5441, 9.7374

Details

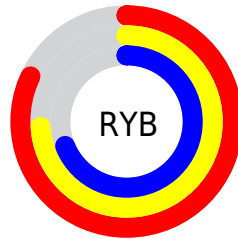
The Yxy color **51.2821, 0.3389, 0.3388** is a light color, and the websafe version is hex **CCCCCC**. A complement of this color would be **55.2052, 0.2899, 0.3190**, and the grayscale version is **52.1137, 0.3127, 0.3290**.

A 20% lighter version of the original color is **90.0538, 0.3270, 0.3369**, and **24.7301, 0.3462, 0.3421** is the 20% darker color. If you saturate the color by 10%, you get **44.4090, 0.3608, 0.3459**, and if you desaturate by 10%, it is **58.9866, 0.3206, 0.3321**.

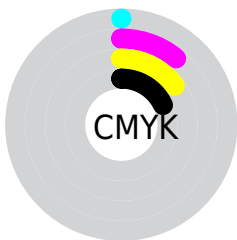
Distribution



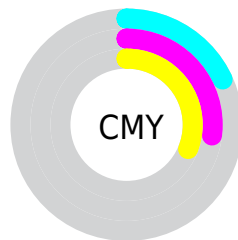
- Red (82%)
- Green (73%)
- Blue (69%)



- Red (82%)
- Yellow (74%)
- Blue (69%)



- Cyan (0%)
- Magenta (11%)
- Yellow (15%)
- Black (18%)





- Cyan (18%)
- Magenta (27%)
- Yellow (31%)

Brightness & Saturation Gradients


These gradients show how the Yxy color 51.2821, 0.3389, 0.3388 changes by changing the brightness by 10 percent. The first figure shows a shift by +10% for each color and the second figure -10%.


Similar to the brightness gradients but the following saturation gradients show a change of the Yxy color 51.2821, 0.3389, 0.3388 by changing the saturation by 10% instead.


 51.2821, 0.3389,
0.3388

 51.2821, 0.3389,
0.3388


391.6588, 0.3259,
0.3341

 36.4332, 0.3421,
0.3399


 92.0716, 0.3342,
0.3371

 24.7689, 0.3462,
0.3413


118.7810, 0.3325,
0.3365

 15.9050, 0.3516,
0.3431


150.2127, 0.3310,
0.3360

 9.4569, 0.3590,
0.3455

186.7510, 0.3297,
0.3355

 5.0404, 0.3700,
0.3488

228.7804, 0.3286,
0.3351

 2.2710, 0.3876,
0.3538

276.6852, 0.3276,

 0.7583, 0.4490,

0.3347

0.3828

330.8499, 0.3267,
0.3344

0.0000, 0.0000,
0.0000

51.2821, 0.3389,
0.3388

51.2821, 0.3389,
0.3388

44.4090, 0.3608,
0.3459

58.9866, 0.3206,
0.3321

38.3323, 0.3868,
0.3530

67.5421, 0.3053,
0.3259

33.0249, 0.4172,
0.3599

76.9763, 0.2925,
0.3202

28.4554, 0.4518,
0.3658

86.9744, 0.2844,
0.3203

24.5900, 0.4898,
0.3698

92.1506, 0.2849,
0.3289

■ 21.3923, 0.5288,
0.3708

■ 18.8223, 0.5651,
0.3678

■ 16.8352, 0.5947,
0.3605

■ 16.0251, 0.6071,
0.3561

Harmonies

Analogous

The Analogous color harmony consists of three colors that are next to each other on the color wheel.



51.2821, 0.3338, 0.3273



51.2821, 0.3389, 0.3388



51.2821, 0.3368, 0.3480

Triad

The Triadic color harmony groups three colors that are evenly spaced from another and form a triangle on the color wheel.



51.2821, 0.3389, 0.3388



51.2821, 0.3024, 0.3420



51.2821, 0.2971, 0.3064

Complementary

The Complementary color scheme is a pair of colors which are on the opposite of each other on the color wheel.



51.2821, 0.3389, 0.3388



55.2052, 0.2899, 0.3190

Split Complementary

Split-complementary colors differ from the complementary color scheme. The scheme consists of three colors, the original color and two neighbors of the complement color.



51.2821, 0.2891, 0.3097



51.2821, 0.3389, 0.3388



51.2821, 0.2921, 0.3302

Square

The Square scheme is like the rectangle color scheme, but the four colors are evenly spaced on the color wheel.



51.2821, 0.3389, 0.3388



51.2821, 0.3156, 0.3502



51.2821, 0.2872, 0.3183



51.2821, 0.3094, 0.3089

Rectangle

The Rectangle color scheme consists of four colors that form a rectangle on the color wheel.



51.2821, 0.3389, 0.3388



51.2821, 0.3317, 0.3516



51.2821, 0.2872, 0.3183



51.2821, 0.2938, 0.3069

Sweetspot

The Sweet Spot groups the original color and five complimentary colors.



51.2844, 0.3389, 0.3388



94.6285, 0.3191, 0.3316



49.0334, 0.3207, 0.3013



20.0435, 0.3204, 0.3320



0.0000, 0.0000, 0.0000



21.4041, 0.3127, 0.3290

Same Dimension

The Same Dimension uses a secret algorithm to generate beautiful new colors.



51.2844, 0.3389, 0.3388



77.5598, 0.3457, 0.3411



58.0097, 0.3362, 0.3568



12.2977, 0.3284, 0.3351



10.1210, 0.6047, 0.3580



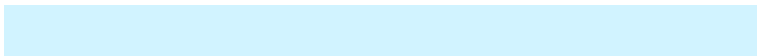
0.6963, 0.5679, 0.3873

Inverse Universe

The Inverse Universe completely reimagines the original color for something new.



55.2052, 0.2899, 0.3190



84.9753, 0.2849, 0.3166



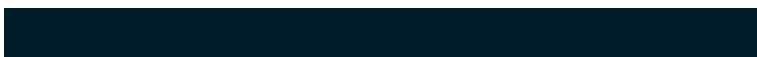
48.4917, 0.2892, 0.2996



12.8684, 0.2983, 0.3229



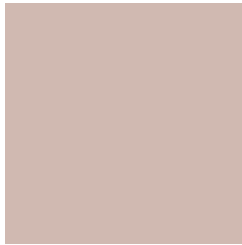
17.4590, 0.2010, 0.2436



1.1004, 0.2059, 0.2611

Previews

White Background



This preview shows how the Yxy color 51.2821, 0.3389, 0.3388 looks on a white background.

Color Contrast Check

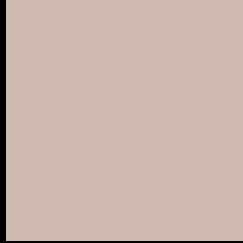
Large Text (above 18pt) WCAG AA × Fail

Any Text WCAG AA × Fail

Large Text (above 18pt) WCAG AAA × Fail

Any Text WCAG AAA × Fail

Black Background



This preview shows how the Yxy color 51.2821, 0.3389, 0.3388 looks on a black background.

Color Contrast Check

Large Text (above 18pt) WCAG AA ✓ Pass

Any Text WCAG AA ✓ Pass

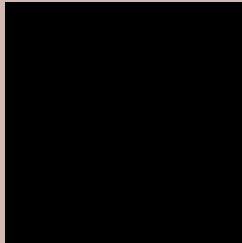
Large Text (above 18pt) WCAG AAA ✓ Pass

Any Text WCAG AAA ✓ Pass

If you want to check with other color combinations, try the [Color Contrast Checker](#).

Yxy 51.2821, 0.3389, 0.3388

Background



This preview shows how black text looks on a background with the Yxy color 51.2821, 0.3389, 0.3388.



This preview shows how white text looks on a background with the Yxy color 51.2821, 0.3389, 0.3388.

Color Blindness Simulation

Color vision deficiency is a very complex topic, and I could not describe the different causes any better than Wikipedia does, so if you want to learn more, you should check out their [article about color blindness](#).

Dichromacy



Original Color

51.2821, 0.3389, 0.3388

Protanopia

51.3856, 0.3263, 0.3415

Deuteranopia

51.1874, 0.3437, 0.3363



Tritanopia

51.2903, 0.3263, 0.3125

Trichromacy



Original Color

51.2821, 0.3389, 0.3388

Protanomaly

51.4602, 0.3307, 0.3414

Deuteranomaly

51.3042, 0.3417, 0.3375

Tritanomaly

51.2427, 0.3310, 0.3219

Monochromacy



Original Color

51.2821, 0.3389, 0.3388

Achromatopsia

52.0996, 0.3127, 0.3290

Achromatomaly

51.8107, 0.3217, 0.3327

CSS Examples

Text

The CSS property to change the color of the text to Yxy 51.2821, 0.3389, 0.3388 is called "color". The color property can be set on classes, ids or directly on the HTML element.

This example shows how text in the color `rgb(208, 185, 177)` looks like.

```
.text, #text, p{  
    color:rgb(208, 185, 177)  
}
```

If you want to add a text shadow in that color use the text-shadow property, you can generate a text shadow directly with our [CSS Text Shadow Generator](#).

Here you see how black text with a 4 pixel rgb(208, 185, 177) colored shadow looks like.

```
.shadow{ text-shadow: 4px 4px 2px rgb(208, 185, 177) }
```

Border

The CSS property to change the border of an element to Yxy 51.2821, 0.3389, 0.3388 is called "border". The border property can be set on classes, ids or directly on the HTML element.

This example shows the color as border, it can be applied via the CSS property "border" or "border-color".

```
.border, #border, table{ border:4px solid rgb(208, 185, 177) }
```

If only the border color should be changed use the property `border-color`.

```
.border{ border-color:rgb(208, 185, 177) }
```

If you want to add a box shadow in that color use:

Here you see how a box with a 4 pixel `rgb(208, 185, 177)` colored shadow looks like.

```
.boxshadow{ -moz-box-shadow:4px 4px 4px  
4px rgb(208, 185, 177); -webkit-box-  
shadow:4px 4px 4px 4px rgb(208, 185, 177);  
box-shadow:4px 4px 4px 4px rgb(208, 185,  
177) }
```


Background

The CSS property to change the background color of an element to Yxy 51.2821, 0.3389, 0.3388 is called "background". The background property can be set on classes, ids or directly on the HTML element.

```
.background, #background, body{  
background: rgb(208, 185, 177) }
```

If only the background color should be changed can be used:

```
.background{ background-color: rgb(208,  
185, 177) }
```

This example shows the color as background, it is applied via the CSS property "background".

To optimize and compress your CSS code, you can use our [online CSS compressor and optimizer](#) based on csstidy. If you want to create a linear or radial gradient as background or border, check our [CSS Gradient Generator](#).

Hey! You found this booklet interesting? Support Converting Colors with the new Membership Option!

The pro membership hides all ads, plus gives you double the colors in the color bucket, and more awesome pro features!

[Learn more, Memberships starting at \\$2.50/m!](#)

**Follow me
on Twitter!**

@ConvertingColor