

Converting Colors

Yxy(51.5218, 0.3485, 0.3328)

Have a look what the booklet for
Yxy(51.5218, 0.3485, 0.3328)
contains.

Yxy(51.3222, 0.3485, 0.3326)	3
Conversions	4
Details	6
Harmonies	12
Previews	24
Color Blindness Simulation	27
CSS Examples	30

Color

Yxy(51.3222, 0.3485, 0.3326)

Conversions

Conversions Part 1

Format	Color
Hex	DBB5B2
RGB	219, 181, 178
RGB Percent	86%, 71%, 70%
CMY	0.1412, 0.2902, 0.3018
CMYK	0.00, 0.17, 0.19, 0.14
HSL	4°, 36%, 78%
HSV	4°, 19%, 86%
XYZ	53.7757, 51.3222, 49.2082
YIQ	192.0200, 23.6110, 7.1230

Conversions

Conversions Part 2

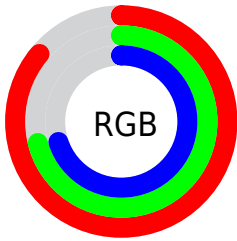
Format	Color
R _Y B	219, 181, 178
Decimal	14398898
CIE Lab	76.87, 13.22, 6.65
CIE LCh	77, 14.800, 26.683
Yxy	51.3222, 0.3485, 0.3326
Android (android.graphics.Color)	4292588978 (0xFFDDBB5B2)
YUV	192.0200, -6.9119, 23.6615
Hunter-Lab	71.6395, 8.6205, 9.4222

Details

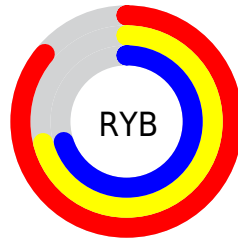
The Yxy color **51.3222, 0.3485, 0.3326** is a light color, and the websafe version is hex **FFCCCC**. A complement of this color would be **63.7111, 0.2846, 0.3254**, and the grayscale version is **52.7577, 0.3127, 0.3290**.

A 20% lighter version of the original color is **87.7689, 0.3267, 0.3320**, and **24.8115, 0.3596, 0.3338** is the 20% darker color. If you saturate the color by 10%, you get **42.8463, 0.3743, 0.3347**, and if you desaturate by 10%, it is **61.1475, 0.3276, 0.3306**.

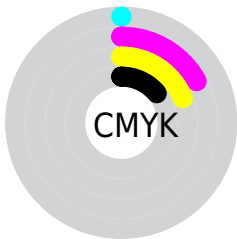
Distribution



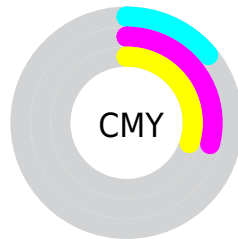
- Red (86%)
- Green (71%)
- Blue (70%)



- Red (86%)
- Yellow (71%)
- Blue (70%)



- Cyan (0%)
- Magenta (17%)
- Yellow (19%)
- Black (14%)





- Cyan (14%)
- Magenta (29%)
- Yellow (30%)

Brightness & Saturation Gradients


These gradients show how the Yxy color 51.3222, 0.3485, 0.3326 changes by changing the brightness by 10 percent. The first figure shows a shift by +10% for each color and the second figure -10%.


Similar to the brightness gradients but the following saturation gradients show a change of the Yxy color 51.3222, 0.3485, 0.3326 by changing the saturation by 10% instead.


 51.3222, 0.3485,
0.3326

 51.3222, 0.3485,
0.3326


391.8143, 0.3308,
0.3311

 36.4651, 0.3529,
0.3329


 92.1309, 0.3421,
0.3321

 24.7936, 0.3585,
0.3333


118.8512, 0.3397,
0.3319

 15.9234, 0.3659,
0.3337


150.2947, 0.3376,
0.3317

 9.4699, 0.3761,
0.3341

186.8459, 0.3359,
0.3316

 5.0489, 0.3911,
0.3344

228.8890, 0.3343,
0.3314

 2.2760, 0.4153,
0.3343

276.8085, 0.3330,

 0.7610, 0.4859,

0.3313

0.3478

330.9888, 0.3318,
0.3312

0.0000, 0.0000,
0.0000

51.3222, 0.3485,
0.3326

51.3222, 0.3485,
0.3326

42.8463, 0.3743,
0.3347

61.1475, 0.3276,
0.3306

35.6543, 0.4058,
0.3368

72.3703, 0.3107,
0.3288

29.6857, 0.4435,
0.3386

85.0446, 0.2971,
0.3271

24.8724, 0.4866,
0.3399

93.8001, 0.2911,
0.3289

21.1394, 0.5328,
0.3402

■ 18.4033, 0.5768,
0.3393

■ 16.5679, 0.6120,
0.3368

■ 15.5153, 0.6335,
0.3337

■ 15.4269, 0.6356,
0.3335

Harmonies

Analogous

The Analogous color harmony consists of three colors that are next to each other on the color wheel.



51.3222, 0.3347, 0.3159



51.3222, 0.3485, 0.3326



51.3222, 0.3524, 0.3490

Triad

The Triadic color harmony groups three colors that are evenly spaced from another and form a triangle on the color wheel.



51.3222, 0.3485, 0.3326



51.3222, 0.3094, 0.3576



51.3222, 0.2808, 0.2973

Complementary

The Complementary color scheme is a pair of colors which are on the opposite of each other on the color wheel.



51.3222, 0.3485, 0.3326



63.7111, 0.2846, 0.3254

Split Complementary

Split-complementary colors differ from the complementary color scheme. The scheme consists of three colors, the original color and two neighbors of the complement color.



51.3222, 0.2746, 0.3072



51.3222, 0.3485, 0.3326



51.3222, 0.2907, 0.3424

Square

The Square scheme is like the rectangle color scheme, but the four colors are evenly spaced on the color wheel.



51.3222, 0.3485, 0.3326



51.3222, 0.3293, 0.3643



51.3222, 0.2782, 0.3237



51.3222, 0.2954, 0.2959

Rectangle

The Rectangle color scheme consists of four colors that form a rectangle on the color wheel.



51.3222, 0.3485, 0.3326



51.3222, 0.3487, 0.3577



51.3222, 0.2782, 0.3237



51.3222, 0.2777, 0.2997

Sweetspot

The Sweet Spot groups the original color and five complimentary colors.



51.3245, 0.3485, 0.3326



90.3310, 0.3228, 0.3301



51.8859, 0.3170, 0.2857



19.1188, 0.3239, 0.3302



0.0000, 0.0000, 0.0000



21.4041, 0.3127, 0.3290

Same Dimension

The Same Dimension uses a secret algorithm to generate beautiful new colors.



51.3245, 0.3485, 0.3326



68.0747, 0.3569, 0.3333



60.1647, 0.3443, 0.3559



13.2023, 0.3290, 0.3308



9.2068, 0.6344, 0.3345



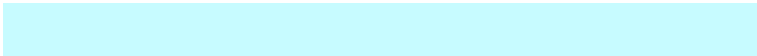
0.6507, 0.6182, 0.3473

Inverse Universe

The Inverse Universe completely reimagines the original color for something new.



63.7111, 0.2846, 0.3254



88.3016, 0.2796, 0.3246



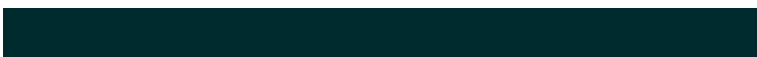
53.9666, 0.2832, 0.3005



14.6595, 0.2982, 0.3272



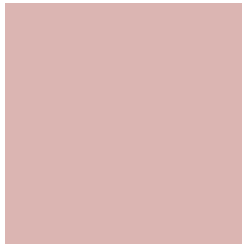
28.4639, 0.2184, 0.3063



1.8934, 0.2195, 0.3103

Previews

White Background



This preview shows how the Yxy color 51.3222, 0.3485, 0.3326 looks on a white background.

Color Contrast Check

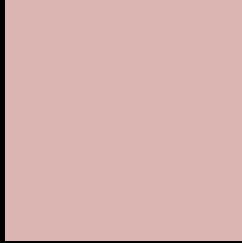
Large Text (above 18pt) WCAG AA × Fail

Any Text WCAG AA × Fail

Large Text (above 18pt) WCAG AAA × Fail

Any Text WCAG AAA × Fail

Black Background



This preview shows how the Yxy color 51.3222, 0.3485, 0.3326 looks on a black background.

Color Contrast Check

Large Text (above 18pt) WCAG AA ✓ Pass

Any Text WCAG AA ✓ Pass

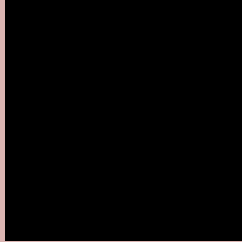
Large Text (above 18pt) WCAG AAA ✓ Pass

Any Text WCAG AAA ✓ Pass

If you want to check with other color combinations, try the [Color Contrast Checker](#).

Yxy 51.3222, 0.3485, 0.3326

Background



This preview shows how black text looks on a background with the Yxy color 51.3222, 0.3485, 0.3326.



This preview shows how white text looks on a background with the Yxy color 51.3222, 0.3485, 0.3326.

Color Blindness Simulation

Color vision deficiency is a very complex topic, and I could not describe the different causes any better than Wikipedia does, so if you want to learn more, you should check out their [article about color blindness](#).

Dichromacy



Original Color

51.3222, 0.3485, 0.3326

Protanopia

51.3747, 0.3231, 0.3378

Deuteranopia

51.2275, 0.3428, 0.3351



Tritanopia

51.4626, 0.3378, 0.3129

Trichromacy



Original Color

51.3222, 0.3485, 0.3326

Protanomaly

51.2914, 0.3320, 0.3352

Deuteranomaly

51.1173, 0.3448, 0.3339

Tritanomaly

51.4890, 0.3410, 0.3198

Monochromacy



Original Color

51.3222, 0.3485, 0.3326

Achromatopsia

52.7115, 0.3127, 0.3290

Achromatomaly

52.1109, 0.3252, 0.3303

CSS Examples

Text

The CSS property to change the color of the text to Yxy 51.3222, 0.3485, 0.3326 is called "color". The color property can be set on classes, ids or directly on the HTML element.

This example shows how text in the color `rgb(219, 181, 178)` looks like.

```
.text, #text, p{  
    color:rgb(219, 181, 178)  
}
```

If you want to add a text shadow in that color use the text-shadow property, you can generate a text shadow directly with our [CSS Text Shadow Generator](#).

Here you see how black text with a 4 pixel rgb(219, 181, 178) colored shadow looks like.

```
.shadow{ text-shadow: 4px 4px 2px rgb(219, 181, 178) }
```

Border

The CSS property to change the border of an element to Yxy 51.3222, 0.3485, 0.3326 is called "border". The border property can be set on classes, ids or directly on the HTML element.

This example shows the color as border, it can be applied via the CSS property "border" or "border-color".

```
.border, #border, table{ border:4px solid rgb(219, 181, 178) }
```

If only the border color should be changed use the property `border-color`.

```
.border{ border-color:rgb(219, 181, 178) }
```

If you want to add a box shadow in that color use:

Here you see how a box with a 4 pixel `rgb(219, 181, 178)` colored shadow looks like.

```
.boxshadow{ -moz-box-shadow:4px 4px 4px  
4px rgb(219, 181, 178); -webkit-box-  
shadow:4px 4px 4px 4px rgb(219, 181, 178);  
box-shadow:4px 4px 4px 4px rgb(219, 181,  
178) }
```


Background

The CSS property to change the background color of an element to Yxy 51.3222, 0.3485, 0.3326 is called "background". The background property can be set on classes, ids or directly on the HTML element.

```
.background, #background, body{  
background: rgb(219, 181, 178) }
```

If only the background color should be changed can be used:

```
.background{ background-color: rgb(219,  
181, 178) }
```

This example shows the color as background, it is applied via the CSS property "background".

To optimize and compress your CSS code, you can use our [online CSS compressor and optimizer](#) based on csstidy. If you want to create a linear or radial gradient as background or border, check our [CSS Gradient Generator](#).

Hey! You found this booklet interesting? Support Converting Colors with the new Membership Option!

The pro membership hides all ads, plus gives you double the colors in the color bucket, and more awesome pro features!

[Learn more, Memberships starting at \\$2.50/m!](#)

**Follow me
on Twitter!**

@ConvertingColor