

Converting Colors

Yxy(51.5317, 0.3362, 0.3372)

Have a look what the booklet for
Yxy(51.5317, 0.3362, 0.3372)
contains.

Yxy(51.6379, 0.3362, 0.3376)	3
<i>Conversions</i>	4
<i>Details</i>	6
<i>Harmonies</i>	12
<i>Previews</i>	24
<i>Color Blindness Simulation</i>	27
<i>CSS Examples</i>	30

Color

Yxy(51.6379, 0.3362, 0.3376)

Conversions

Conversions Part 1

Format	Color
Hex	CFBAB3
RGB	207, 186, 179
RGB Percent	81%, 73%, 70%
CMY	0.1883, 0.2705, 0.2981
CMYK	0.00, 0.10, 0.14, 0.19
HSL	15°, 23%, 76%
HSV	15°, 14%, 81%
XYZ	51.4238, 51.6379, 49.8942
YIQ	191.4810, 14.7630, 2.2750

Conversions

Conversions Part 2

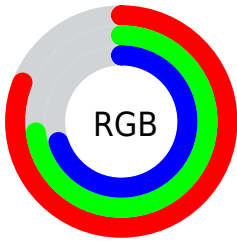
Format	Color
RYB	207, 188, 179
Decimal	13613747
CIELab	77.06, 6.29, 6.26
CIELCh	77, 8.874, 44.900
Yxy	51.6379, 0.3362, 0.3376
Android (android.graphics.Color)	4291803827 (0xFFCFBAB3)
YUV	191.4810, -6.1531, 13.6102
Hunter-Lab	71.8595, 1.9832, 9.1348

Details

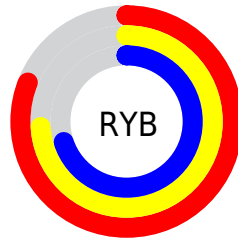
The Yxy color **51.6379, 0.3362, 0.3376** is a light color, and the websafe version is hex **CCCCCC**. A complement of this color would be **55.3761, 0.2920, 0.3202**, and the grayscale version is **52.4241, 0.3127, 0.3290**.

A 20% lighter version of the original color is **90.7624, 0.3256, 0.3359**, and **24.9568, 0.3425, 0.3405** is the 20% darker color. If you saturate the color by 10%, you get **44.6821, 0.3576, 0.3444**, and if you desaturate by 10%, it is **59.4329, 0.3183, 0.3312**.

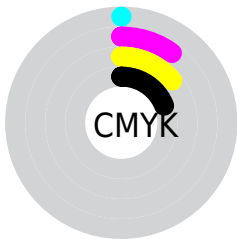
Distribution



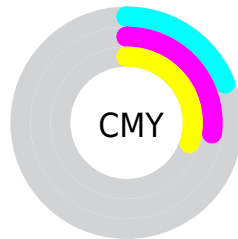
- Red (81%)
- Green (73%)
- Blue (70%)



- Red (81%)
- Yellow (74%)
- Blue (70%)



- Cyan (0%)
- Magenta (10%)
- Yellow (14%)
- Black (19%)




- Cyan (19%)
- Magenta (27%)
- Yellow (30%)

Brightness & Saturation Gradients


These gradients show how the Yxy color 51.6379, 0.3362, 0.3376 changes by changing the brightness by 10 percent. The first figure shows a shift by +10% for each color and the second figure -10%.


Similar to the brightness gradients but the following saturation gradients show a change of the Yxy color 51.6379, 0.3362, 0.3376 by changing the saturation by 10% instead.


 51.6379, 0.3362,
0.3376

 51.6379, 0.3362,
0.3376


393.0371, 0.3246,
0.3335

 36.7165, 0.3391,
0.3386


 92.5970, 0.3320,
0.3361

 24.9881, 0.3427,
0.3398


119.4035, 0.3304,
0.3356

 16.0682, 0.3475,
0.3414


150.9406, 0.3291,
0.3351

 9.5724, 0.3542,
0.3435

187.5925, 0.3279,
0.3347

 5.1164, 0.3639,
0.3465

229.7437, 0.3269,
0.3343

 2.3157, 0.3796,
0.3509

277.7786, 0.3261,

 0.7820, 0.4289,

0.3340

0.3735

332.0816, 0.3253,
0.3337

0.0000, 0.0000,
0.0000

51.6379, 0.3362,
0.3376

51.6379, 0.3362,
0.3376

44.6821, 0.3576,
0.3444

59.4329, 0.3183,
0.3312

38.5304, 0.3831,
0.3514

68.0868, 0.3034,
0.3252

33.1555, 0.4131,
0.3582

77.6276, 0.2909,
0.3197

28.5258, 0.4474,
0.3641

87.6354, 0.2839,
0.3217

24.6075, 0.4853,
0.3683

92.0039, 0.2844,
0.3289

■ 21.3640, 0.5246,
0.3696

■ 18.7554, 0.5619,
0.3671

■ 16.7368, 0.5928,
0.3604

■ 15.7153, 0.6087,
0.3549

Harmonies

Analogous

The Analogous color harmony consists of three colors that are next to each other on the color wheel.



51.6379, 0.3314, 0.3272



51.6379, 0.3362, 0.3376



51.6379, 0.3345, 0.3460

Triad

The Triadic color harmony groups three colors that are evenly spaced from another and form a triangle on the color wheel.



51.6379, 0.3362, 0.3376



51.6379, 0.3037, 0.3409



51.6379, 0.2984, 0.3087

Complementary

The Complementary color scheme is a pair of colors which are on the opposite of each other on the color wheel.



51.6379, 0.3362, 0.3376



55.3761, 0.2920, 0.3202

Split Complementary

Split-complementary colors differ from the complementary color scheme. The scheme consists of three colors, the original color and two neighbors of the complement color.



51.6379, 0.2913, 0.3118



51.6379, 0.3362, 0.3376



51.6379, 0.2943, 0.3304

Square

The Square scheme is like the rectangle color scheme, but the four colors are evenly spaced on the color wheel.



51.6379, 0.3362, 0.3376



51.6379, 0.3156, 0.3481



51.6379, 0.2898, 0.3197



51.6379, 0.3095, 0.3108

Rectangle

The Rectangle color scheme consists of four colors that form a rectangle on the color wheel.



51.6379, 0.3362, 0.3376



51.6379, 0.3300, 0.3492



51.6379, 0.2898, 0.3197



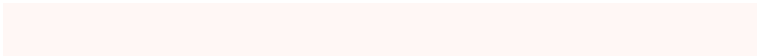
51.6379, 0.2955, 0.3091

Sweetspot

The Sweet Spot groups the original color and five complimentary colors.



51.6402, 0.3362, 0.3376



94.5822, 0.3191, 0.3315



49.6663, 0.3199, 0.3039



20.0318, 0.3204, 0.3320



0.0000, 0.0000, 0.0000



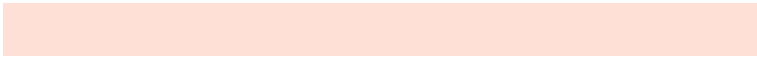
21.4041, 0.3127, 0.3290

Same Dimension

The Same Dimension uses a secret algorithm to generate beautiful new colors.



51.6402, 0.3362, 0.3376



79.6732, 0.3415, 0.3394



57.8205, 0.3339, 0.3542



12.2835, 0.3284, 0.3349



10.0307, 0.6064, 0.3567



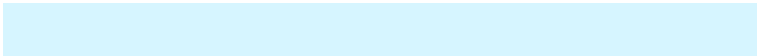
0.6896, 0.5696, 0.3860

Inverse Universe

The Inverse Universe completely reimagines the original color for something new.



55.3761, 0.2920, 0.3202



86.7061, 0.2880, 0.3184



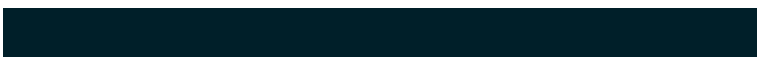
49.1969, 0.2915, 0.3025



12.8836, 0.2983, 0.3230



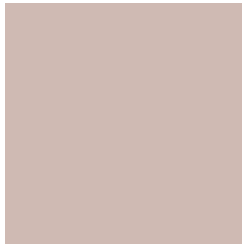
17.7757, 0.2017, 0.2462



1.1159, 0.2064, 0.2632

Previews

White Background



This preview shows how the Yxy color 51.6379, 0.3362, 0.3376 looks on a white background.

Color Contrast Check

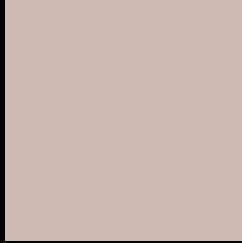
Large Text (above 18pt) WCAG AA × Fail

Any Text WCAG AA × Fail

Large Text (above 18pt) WCAG AAA × Fail

Any Text WCAG AAA × Fail

Black Background



This preview shows how the Yxy color 51.6379, 0.3362, 0.3376 looks on a black background.

Color Contrast Check

Large Text (above 18pt) WCAG AA ✓ Pass

Any Text WCAG AA ✓ Pass

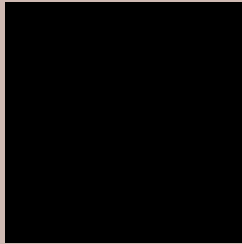
Large Text (above 18pt) WCAG AAA ✓ Pass

Any Text WCAG AAA ✓ Pass

If you want to check with other color combinations, try the [Color Contrast Checker](#).

Yxy 51.6379, 0.3362, 0.3376

Background



This preview shows how black text looks on a background with the Yxy color 51.6379, 0.3362, 0.3376.



This preview shows how white text looks on a background with the Yxy color 51.6379, 0.3362, 0.3376.

Color Blindness Simulation

Color vision deficiency is a very complex topic, and I could not describe the different causes any better than Wikipedia does, so if you want to learn more, you should check out their [article about color blindness](#).

Dichromacy



Original Color

51.6379, 0.3362, 0.3376

Protanopia

51.8989, 0.3246, 0.3402

Deuteranopia

51.6818, 0.3418, 0.3351



Tritanopia

51.4995, 0.3228, 0.3112

Trichromacy



Original Color

51.6379, 0.3362, 0.3376

Protanomaly

51.9698, 0.3289, 0.3401

Deuteranomaly

51.8015, 0.3398, 0.3363

Tritanomaly

51.4525, 0.3275, 0.3207

Monochromacy



Original Color

51.6379, 0.3362, 0.3376

Achromatopsia

52.0996, 0.3127, 0.3290

Achromatomaly

51.8534, 0.3209, 0.3315

CSS Examples

Text

The CSS property to change the color of the text to Yxy 51.6379, 0.3362, 0.3376 is called "color". The color property can be set on classes, ids or directly on the HTML element.

This example shows how text in the color `rgb(207, 186, 179)` looks like.

```
.text, #text, p{  
    color:rgb(207, 186, 179)  
}
```

If you want to add a text shadow in that color use the text-shadow property, you can generate a text shadow directly with our [CSS Text Shadow Generator](#).

Here you see how black text with a 4 pixel rgb(207, 186, 179) colored shadow looks like.

```
.shadow{ text-shadow: 4px 4px 2px rgb(207, 186, 179) }
```

Border

The CSS property to change the border of an element to Yxy 51.6379, 0.3362, 0.3376 is called "border". The border property can be set on classes, ids or directly on the HTML element.

This example shows the color as border, it can be applied via the CSS property "border" or "border-color".

```
.border, #border, table{ border:4px solid rgb(207, 186, 179) }
```

If only the border color should be changed use the property `border-color`.

```
.border{ border-color:rgb(207, 186, 179) }
```

If you want to add a box shadow in that color use:

Here you see how a box with a 4 pixel `rgb(207, 186, 179)` colored shadow looks like.

```
.boxshadow{ -moz-box-shadow:4px 4px 4px  
4px rgb(207, 186, 179); -webkit-box-  
shadow:4px 4px 4px 4px rgb(207, 186, 179);  
box-shadow:4px 4px 4px 4px rgb(207, 186,  
179) }
```


Background

The CSS property to change the background color of an element to Yxy 51.6379, 0.3362, 0.3376 is called "background". The background property can be set on classes, ids or directly on the HTML element.

```
.background, #background, body{  
background: rgb(207, 186, 179) }
```

If only the background color should be changed can be used:

```
.background{ background-color: rgb(207,  
186, 179) }
```

This example shows the color as background, it is applied via the CSS property "background".

To optimize and compress your CSS code, you can use our [online CSS compressor and optimizer](#) based on csstidy. If you want to create a linear or radial gradient as background or border, check our [CSS Gradient Generator](#).

Hey! You found this booklet interesting? Support Converting Colors with the new Membership Option!

The pro membership hides all ads, plus gives you double the colors in the color bucket, and more awesome pro features!

[Learn more, Memberships starting at \\$2.50/m!](#)

**Follow me
on Twitter!**

@ConvertingColor