

Converting Colors

Yxy(51.5317, 0.3425, 0.3504)

Have a look what the booklet for
Yxy(51.5317, 0.3425, 0.3504)
contains.

Yxy(51.5647, 0.3425, 0.3499)	3
Conversions	4
Details	6
Harmonies	12
Previews	24
Color Blindness Simulation	27
CSS Examples	30

Color

Yxy(51.5647, 0.3425, 0.3499)

Conversions

Conversions Part 1

Format	Color
Hex	CEBBAA
RGB	206, 187, 170
RGB Percent	81%, 73%, 67%
CMY	0.1923, 0.2666, 0.3333
CMYK	0.00, 0.09, 0.17, 0.19
HSL	28°, 27%, 74%
HSV	28°, 17%, 81%
XYZ	50.4742, 51.5647, 45.3310
YIQ	190.7430, 16.7810, -1.2590

Conversions

Conversions Part 2

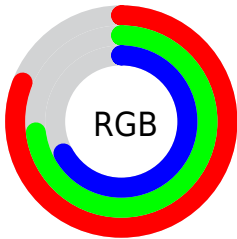
Format	Color
RYB	206, 202, 170
Decimal	13548458
CIELab	77.02, 3.95, 11.04
CIElCh	77, 11.725, 70.305
Yxy	51.5647, 0.3425, 0.3499
Android (android.graphics.Color)	4291738538 (0xFFCEBBAA)
YUV	190.7430, -10.2263, 13.3804
Hunter-Lab	71.8086, -0.1975, 12.8377

Details

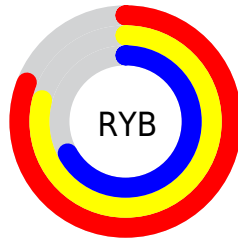
The Yxy color **51.5647, 0.3425, 0.3499** is a light color, and the websafe version is hex **CCCCCC**. A complement of this color would be **49.3856, 0.2855, 0.3072**, and the grayscale version is **51.9965, 0.3127, 0.3290**.

A 20% lighter version of the original color is **90.7974, 0.3318, 0.3467**, and **24.9375, 0.3501, 0.3555** is the 20% darker color. If you saturate the color by 10%, you get **46.4123, 0.3630, 0.3626**, and if you desaturate by 10%, it is **57.1923, 0.3246, 0.3377**.

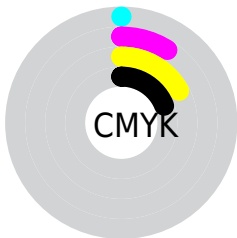
Distribution



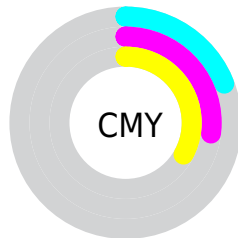
- Red (81%)
- Green (73%)
- Blue (67%)



- Red (81%)
- Yellow (79%)
- Blue (67%)



- Cyan (0%)
- Magenta (9%)
- Yellow (17%)
- Black (19%)




- Cyan (19%)
- Magenta (27%)
- Yellow (33%)

Brightness & Saturation Gradients


These gradients show how the Yxy color 51.5647, 0.3425, 0.3499 changes by changing the brightness by 10 percent. The first figure shows a shift by +10% for each color and the second figure -10%.


Similar to the brightness gradients but the following saturation gradients show a change of the Yxy color 51.5647, 0.3425, 0.3499 by changing the saturation by 10% instead.


 51.5647, 0.3425,
0.3499

 51.5647, 0.3425,
0.3499

392.7538, 0.3278,
0.3398

 36.6582, 0.3461,
0.3523


 92.4889, 0.3372,
0.3463

 24.9430, 0.3507,
0.3554


119.2755, 0.3352,
0.3449

 16.0346, 0.3568,
0.3594


150.7909, 0.3335,
0.3437

 9.5486, 0.3651,
0.3649


187.4195, 0.3320,
0.3427

 5.1007, 0.3773,
0.3726

229.5457, 0.3308,
0.3418

 2.3065, 0.3965,
0.3843

277.5538, 0.3297,

 0.7771, 0.4951,

0.3411

0.4608

331.8284, 0.3287,
0.3404

0.0000, 0.0000,
0.0000

51.5647, 0.3425,
0.3499

51.5647, 0.3425,
0.3499

46.4123, 0.3630,
0.3626

57.1923, 0.3246,
0.3377

41.7149, 0.3861,
0.3754

63.3008, 0.3090,
0.3261

37.4607, 0.4118,
0.3876

69.9048, 0.2954,
0.3154

33.6348, 0.4395,
0.3984

77.0160, 0.2837,
0.3056

30.2212, 0.4682,
0.4065

83.4313, 0.2829,
0.3146

■ 27.2028, 0.4965,
0.4107

■ 90.0640, 0.2836,
0.3260

■ 24.5603, 0.5225,
0.4098

■ 91.8573, 0.2838,
0.3289

■ 22.2704, 0.5445,
0.4036

■ 21.7367, 0.5498,
0.4016

Harmonies

Analogous

The Analogous color harmony consists of three colors that are next to each other on the color wheel.



51.5647, 0.3434, 0.3382



51.5647, 0.3425, 0.3499



51.5647, 0.3334, 0.3564

Triad

The Triadic color harmony groups three colors that are evenly spaced from another and form a triangle on the color wheel.



51.5647, 0.3425, 0.3499



51.5647, 0.2900, 0.3330



51.5647, 0.3059, 0.3043

Complementary

The Complementary color scheme is a pair of colors which are on the opposite of each other on the color wheel.



51.5647, 0.3425, 0.3499



49.3856, 0.2855, 0.3072

Split Complementary

Split-complementary colors differ from the complementary color scheme. The scheme consists of three colors, the original color and two neighbors of the complement color.



51.5647, 0.2920, 0.3024



51.5647, 0.3425, 0.3499



51.5647, 0.2830, 0.3186

Square

The Square scheme is like the rectangle color scheme, but the four colors are evenly spaced on the color wheel.



51.5647, 0.3425, 0.3499



51.5647, 0.3030, 0.3467



51.5647, 0.2837, 0.3075



51.5647, 0.3220, 0.3123

Rectangle

The Rectangle color scheme consists of four colors that form a rectangle on the color wheel.



51.5647, 0.3425, 0.3499



51.5647, 0.3241, 0.3566



51.5647, 0.2837, 0.3075



51.5647, 0.3008, 0.3029

Sweetspot

The Sweet Spot groups the original color and five complimentary colors.



51.5670, 0.3425, 0.3499



94.9917, 0.3206, 0.3348



45.5558, 0.3289, 0.3056



20.1850, 0.3218, 0.3357



0.0000, 0.0000, 0.0000



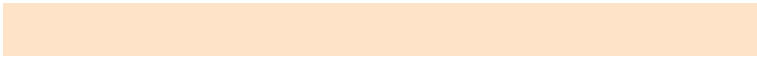
21.4041, 0.3127, 0.3290

Same Dimension

The Same Dimension uses a secret algorithm to generate beautiful new colors.



51.5670, 0.3425, 0.3499



80.3093, 0.3500, 0.3547



59.5729, 0.3390, 0.3707



12.0738, 0.3278, 0.3400



13.5806, 0.5474, 0.4035



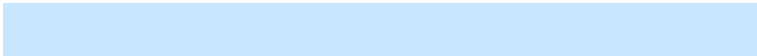
0.8522, 0.5160, 0.4285

Inverse Universe

The Inverse Universe completely reimagines the original color for something new.



49.3856, 0.2855, 0.3072



76.1170, 0.2794, 0.3018



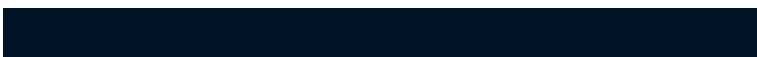
42.2102, 0.2844, 0.2836



11.8066, 0.2983, 0.3178



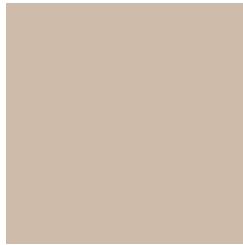
9.6231, 0.1801, 0.1683



0.6478, 0.1895, 0.2023

Previews

White Background



This preview shows how the Yxy color 51.5647, 0.3425, 0.3499 looks on a white background.

Color Contrast Check

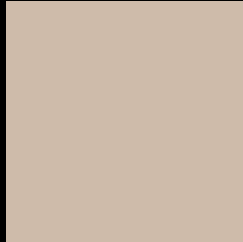
Large Text (above 18pt) WCAG AA × Fail

Any Text WCAG AA × Fail

Large Text (above 18pt) WCAG AAA × Fail

Any Text WCAG AAA × Fail

Black Background



This preview shows how the Yxy color 51.5647, 0.3425, 0.3499 looks on a black background.

Color Contrast Check

Large Text (above 18pt) WCAG AA ✓ Pass

Any Text WCAG AA ✓ Pass

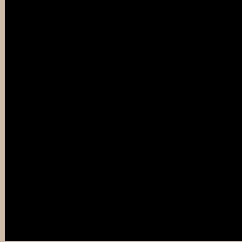
Large Text (above 18pt) WCAG AAA ✓ Pass

Any Text WCAG AAA ✓ Pass

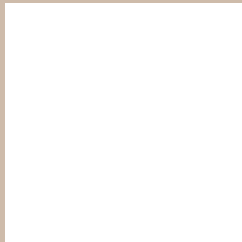
If you want to check with other color combinations, try the [Color Contrast Checker](#).

Yxy 51.5647, 0.3425, 0.3499

Background



This preview shows how black text looks on a background with the Yxy color 51.5647, 0.3425, 0.3499.



This preview shows how white text looks on a background with the Yxy color 51.5647, 0.3425, 0.3499.

Color Blindness Simulation

Color vision deficiency is a very complex topic, and I could not describe the different causes any better than Wikipedia does, so if you want to learn more, you should check out their [article about color blindness](#).

Dichromacy



Original Color

51.5647, 0.3425, 0.3499

Protanopia

51.7730, 0.3342, 0.3528

Deuteranopia

51.4062, 0.3514, 0.3434



Tritanopia

51.5998, 0.3245, 0.3124

Trichromacy



Original Color

51.5647, 0.3425, 0.3499

Protanomaly

51.7530, 0.3370, 0.3514

Deuteranomaly

51.2183, 0.3476, 0.3448

Tritanomaly

51.4241, 0.3317, 0.3255

Monochromacy



Original Color

51.5647, 0.3425, 0.3499

Achromatopsia

52.0996, 0.3127, 0.3290

Achromatomaly

51.9816, 0.3231, 0.3377

CSS Examples

Text

The CSS property to change the color of the text to Yxy 51.5647, 0.3425, 0.3499 is called "color". The color property can be set on classes, ids or directly on the HTML element.

This example shows how text in the color `rgb(206, 187, 170)` looks like.

```
.text, #text, p{  
    color:rgb(206, 187, 170)  
}
```

If you want to add a text shadow in that color use the text-shadow property, you can generate a text shadow directly with our [CSS Text Shadow Generator](#).

Here you see how black text with a 4 pixel rgb(206, 187, 170) colored shadow looks like.

```
.shadow{ text-shadow: 4px 4px 2px rgb(206, 187, 170) }
```

Border

The CSS property to change the border of an element to Yxy 51.5647, 0.3425, 0.3499 is called "border". The border property can be set on classes, ids or directly on the HTML element.

This example shows the color as border, it can be applied via the CSS property "border" or "border-color".

```
.border, #border, table{ border:4px solid rgb(206, 187, 170) }
```

If only the border color should be changed use the property `border-color`.

```
.border{ border-color:rgb(206, 187, 170) }
```

If you want to add a box shadow in that color use:

Here you see how a box with a 4 pixel `rgb(206, 187, 170)` colored shadow looks like.

```
.boxshadow{ -moz-box-shadow:4px 4px 4px 4px rgb(206, 187, 170); -webkit-box-shadow:4px 4px 4px 4px rgb(206, 187, 170); box-shadow:4px 4px 4px 4px rgb(206, 187, 170) }
```


Background

The CSS property to change the background color of an element to Yxy 51.5647, 0.3425, 0.3499 is called "background". The background property can be set on classes, ids or directly on the HTML element.

```
.background, #background, body{  
background: rgb(206, 187, 170) }
```

If only the background color should be changed can be used:

```
.background{ background-color: rgb(206,  
187, 170) }
```

This example shows the color as background, it is applied via the CSS property "background".

To optimize and compress your CSS code, you can use our [online CSS compressor and optimizer](#) based on csstidy. If you want to create a linear or radial gradient as background or border, check our [CSS Gradient Generator](#).

Hey! You found this booklet interesting? Support Converting Colors with the new Membership Option!

The pro membership hides all ads, plus gives you double the colors in the color bucket, and more awesome pro features!

[Learn more, Memberships starting at \\$2.50/m!](#)

**Follow me
on Twitter!**

@ConvertingColor