

# Converting Colors

Yxy(51.6183, 0.3365, 0.3375)

Have a look what the booklet for  
Yxy(51.6183, 0.3365, 0.3375)  
contains.

<b>Yxy(51.6379, 0.3362, 0.3376)</b> .....	3
<b>Conversions</b> .....	4
<b>Details</b> .....	6
<b>Harmonies</b> .....	12
<b>Previews</b> .....	24
<b>Color Blindness Simulation</b> .....	27
<b>CSS Examples</b> .....	30

# Color

**Yxy(51.6379, 0.3362, 0.3376)**

# Conversions

## Conversions Part 1

Format	Color
Hex	CFBAB3
RGB	207, 186, 179
RGB Percent	81%, 73%, 70%
CMY	0.1883, 0.2705, 0.2981
CMYK	0.00, 0.10, 0.14, 0.19
HSL	15°, 23%, 76%
HSV	15°, 14%, 81%
XYZ	51.4238, 51.6379, 49.8942
YIQ	191.4810, 14.7630, 2.2750

# Conversions

## Conversions Part 2

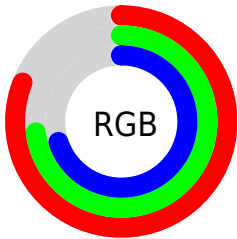
<b>Format</b>	<b>Color</b>
RYB	207, 188, 179
Decimal	13613747
CIELab	77.06, 6.29, 6.26
CIELCh	77, 8.874, 44.900
Yxy	51.6379, 0.3362, 0.3376
Android (android.graphics.Color)	4291803827 (0xFFCFBAB3)
YUV	191.4810, -6.1531, 13.6102
Hunter-Lab	71.8595, 1.9832, 9.1348

# Details

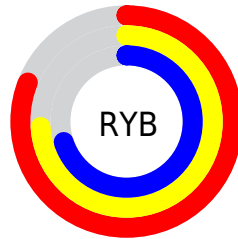
The Yxy color **51.6379, 0.3362, 0.3376** is a light color, and the websafe version is hex **CCCCCC**. A complement of this color would be **55.3761, 0.2920, 0.3202**, and the grayscale version is **52.4241, 0.3127, 0.3290**.

A 20% lighter version of the original color is **90.7624, 0.3256, 0.3359**, and **24.9568, 0.3425, 0.3405** is the 20% darker color. If you saturate the color by 10%, you get **44.6821, 0.3576, 0.3444**, and if you desaturate by 10%, it is **59.4329, 0.3183, 0.3312**.

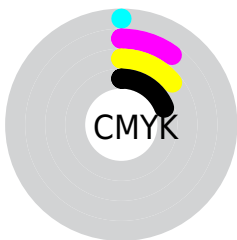
# Distribution



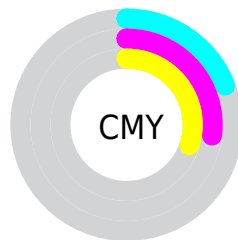
- Red (81%)
- Green (73%)
- Blue (70%)



- Red (81%)
- Yellow (74%)
- Blue (70%)



- Cyan (0%)
- Magenta (10%)
- Yellow (14%)
- Black (19%)




- Cyan (19%)
- Magenta (27%)
- Yellow (30%)

# Brightness & Saturation Gradients

These gradients show how the Yxy color 51.6379, 0.3362, 0.3376 changes by changing the brightness by 10 percent. The first figure shows a shift by +10% for each color and the second figure -10%.


Similar to the brightness gradients but the following saturation gradients show a change of the Yxy color 51.6379, 0.3362, 0.3376 by changing the saturation by 10% instead.





 51.6379, 0.3362,  
0.3376

 51.6379, 0.3362,  
0.3376

393.0371, 0.3246,  
0.3335

 36.7165, 0.3391,  
0.3386

 92.5970, 0.3320,  
0.3361

 24.9881, 0.3427,  
0.3398


119.4035, 0.3304,  
0.3356

 16.0682, 0.3475,  
0.3414


150.9406, 0.3291,  
0.3351

 9.5724, 0.3542,  
0.3435

187.5925, 0.3279,  
0.3347

 5.1164, 0.3639,  
0.3465

229.7437, 0.3269,  
0.3343

 2.3157, 0.3796,  
0.3509

277.7786, 0.3261,

 0.7820, 0.4289,

0.3340

0.3735

332.0816, 0.3253,  
0.3337

0.0000, 0.0000,  
0.0000

51.6379, 0.3362,  
0.3376

51.6379, 0.3362,  
0.3376

44.6821, 0.3576,  
0.3444

59.4329, 0.3183,  
0.3312

38.5304, 0.3831,  
0.3514

68.0868, 0.3034,  
0.3252

33.1555, 0.4131,  
0.3582

77.6276, 0.2909,  
0.3197

28.5258, 0.4474,  
0.3641

87.6354, 0.2839,  
0.3217

24.6075, 0.4853,  
0.3683

92.0039, 0.2844,  
0.3289

■ 21.3640, 0.5246,  
0.3696

■ 18.7554, 0.5619,  
0.3671

■ 16.7368, 0.5928,  
0.3604

■ 15.7153, 0.6087,  
0.3549

# Harmonies

## Analogous

The Analogous color harmony consists of three colors that are next to each other on the color wheel.



51.6379, 0.3314, 0.3272



51.6379, 0.3362, 0.3376



51.6379, 0.3345, 0.3460

# Triad

The Triadic color harmony groups three colors that are evenly spaced from another and form a triangle on the color wheel.



51.6379, 0.3362, 0.3376



51.6379, 0.3037, 0.3409



51.6379, 0.2984, 0.3087

# Complementary

The Complementary color scheme is a pair of colors which are on the opposite of each other on the color wheel.



51.6379, 0.3362, 0.3376



55.3761, 0.2920, 0.3202

# Split Complementary

Split-complementary colors differ from the complementary color scheme. The scheme consists of three colors, the original color and two neighbors of the complement color.



51.6379, 0.2913, 0.3118



51.6379, 0.3362, 0.3376



51.6379, 0.2943, 0.3304

# Square

The Square scheme is like the rectangle color scheme, but the four colors are evenly spaced on the color wheel.



51.6379, 0.3362, 0.3376



51.6379, 0.3156, 0.3481



51.6379, 0.2898, 0.3197



51.6379, 0.3095, 0.3108



# Rectangle

The Rectangle color scheme consists of four colors that form a rectangle on the color wheel.



51.6379, 0.3362, 0.3376



51.6379, 0.3300, 0.3492



51.6379, 0.2898, 0.3197



51.6379, 0.2955, 0.3091

# Sweetspot

The Sweet Spot groups the original color and five complimentary colors.



51.6402, 0.3362, 0.3376



94.5822, 0.3191, 0.3315



49.6663, 0.3199, 0.3039



20.0318, 0.3204, 0.3320



0.0000, 0.0000, 0.0000



21.4041, 0.3127, 0.3290

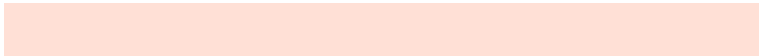


# Same Dimension

The Same Dimension uses a secret algorithm to generate beautiful new colors.



51.6402, 0.3362, 0.3376



79.6732, 0.3415, 0.3394



57.8205, 0.3339, 0.3542



12.2835, 0.3284, 0.3349



10.0307, 0.6064, 0.3567



0.6896, 0.5696, 0.3860

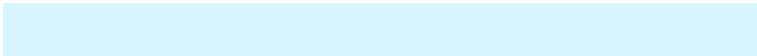


# Inverse Universe

The Inverse Universe completely reimagines the original color for something new.



55.3761, 0.2920, 0.3202



86.7061, 0.2880, 0.3184



49.1969, 0.2915, 0.3025



12.8836, 0.2983, 0.3230



17.7757, 0.2017, 0.2462

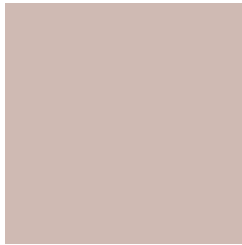


1.1159, 0.2064, 0.2632



# Previews

## White Background



This preview shows how the Yxy color 51.6379, 0.3362, 0.3376 looks on a white background.

## Color Contrast Check

Large Text (above 18pt) WCAG AA × Fail

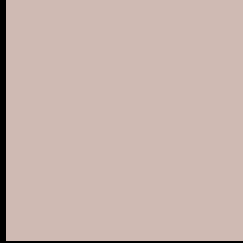
Any Text WCAG AA × Fail

Large Text (above 18pt) WCAG AAA × Fail

Any Text WCAG AAA × Fail



# Black Background



This preview shows how the Yxy color 51.6379, 0.3362, 0.3376 looks on a black background.

## Color Contrast Check

Large Text (above 18pt) WCAG AA ✓ Pass

Any Text WCAG AA ✓ Pass

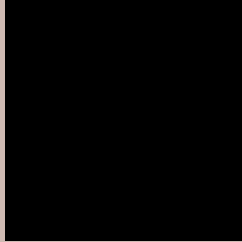
Large Text (above 18pt) WCAG AAA ✓ Pass

Any Text WCAG AAA ✓ Pass

If you want to check with other color combinations, try the [Color Contrast Checker](#).

**Yxy 51.6379, 0.3362, 0.3376**

## **Background**



This preview shows how black text looks on a background with the Yxy color 51.6379, 0.3362, 0.3376.



This preview shows how white text looks on a background with the Yxy color 51.6379, 0.3362, 0.3376.

# Color Blindness Simulation

Color vision deficiency is a very complex topic, and I could not describe the different causes any better than Wikipedia does, so if you want to learn more, you should check out their [article about color blindness](#).

## Dichromacy



### Original Color

51.6379, 0.3362, 0.3376

### Protanopia

51.8989, 0.3246, 0.3402

### Deuteranopia

51.6818, 0.3418, 0.3351



## Tritanopia

51.4995, 0.3228, 0.3112

# Trichromacy



## Original Color

51.6379, 0.3362, 0.3376

## Protanomaly

51.9698, 0.3289, 0.3401

## Deuteranomaly

51.8015, 0.3398, 0.3363

## Tritanomaly

51.4525, 0.3275, 0.3207

# Monochromacy



## Original Color

51.6379, 0.3362, 0.3376

## Achromatopsia

52.0996, 0.3127, 0.3290

## Achromatomaly

51.8534, 0.3209, 0.3315

# CSS Examples

## Text

The CSS property to change the color of the text to Yxy 51.6379, 0.3362, 0.3376 is called "color". The color property can be set on classes, ids or directly on the HTML element.

This example shows how text in the color `rgb(207, 186, 179)` looks like.

```
.text, #text, p{  
    color:rgb(207, 186, 179)  
}
```

If you want to add a text shadow in that color use the text-shadow property, you can generate a text shadow directly with our [CSS Text Shadow Generator](#).

Here you see how black text with a 4 pixel rgb(207, 186, 179) colored shadow looks like.

```
.shadow{ text-shadow: 4px 4px 2px rgb(207, 186, 179) }
```

## Border

The CSS property to change the border of an element to Yxy 51.6379, 0.3362, 0.3376 is called "border". The border property can be set on classes, ids or directly on the HTML element.

This example shows the color as border, it can be applied via the CSS property "border" or "border-color".

```
.border, #border, table{ border:4px solid rgb(207, 186, 179) }
```

If only the border color should be changed use the property `border-color`.

```
.border{ border-color:rgb(207, 186, 179) }
```

If you want to add a box shadow in that color use:

Here you see how a box with a 4 pixel `rgb(207, 186, 179)` colored shadow looks like.

```
.boxshadow{ -moz-box-shadow:4px 4px 4px  
4px rgb(207, 186, 179); -webkit-box-  
shadow:4px 4px 4px 4px rgb(207, 186, 179);  
box-shadow:4px 4px 4px 4px rgb(207, 186,  
179) }
```



# Background

The CSS property to change the background color of an element to Yxy 51.6379, 0.3362, 0.3376 is called "background". The background property can be set on classes, ids or directly on the HTML element.

```
.background, #background, body{  
background: rgb(207, 186, 179) }
```

If only the background color should be changed can be used:

```
.background{ background-color: rgb(207,  
186, 179) }
```

This example shows the color as background, it is applied via the CSS property "background".

To optimize and compress your CSS code, you can use our [online CSS compressor and optimizer](#) based on csstidy. If you want to create a linear or radial gradient as background or border, check our [CSS Gradient Generator](#).

Hey! You found this booklet interesting? Support Converting Colors with the new Membership Option!

The pro membership hides all ads, plus gives you double the colors in the color bucket, and more awesome pro features!

**[Learn more, Memberships starting at \\$2.50/m!](#)**

**Follow me  
on Twitter!**

@ConvertingColor