

Converting Colors

Yxy(51.7655, 0.3620, 0.3615)

Have a look what the booklet for
Yxy(51.7655, 0.3620, 0.3615)
contains.

Yxy(51.7655, 0.3620, 0.3615)	3
Conversions	4
Details	6
Harmonies	12
Previews	24
Color Blindness Simulation	27
CSS Examples	30

Color

Yxy(51.7655, 0.3620, 0.3615)

Conversions

Conversions Part 1

Format	Color
Hex	D8B99E
RGB	216, 185, 158
RGB Percent	85%, 73%, 62%
CMY	0.1529, 0.2745, 0.3805
CMYK	0.00, 0.14, 0.27, 0.15
HSL	28°, 43%, 73%
HSV	28°, 27%, 85%
XYZ	51.8371, 51.7655, 39.5938
YIQ	191.1910, 27.1430, -1.8250

Conversions

Conversions Part 2

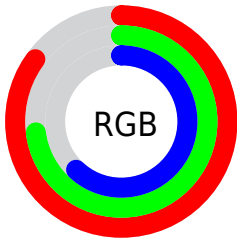
Format	Color
RYB	216, 209, 158
Decimal	14203294
CIELab	77.14, 7.04, 17.83
CIELCh	77, 19.174, 68.447
Yxy	51.7655, 0.3620, 0.3615
Android (android.graphics.Color)	4292393374 (0xFFD8B99E)
YUV	191.1910, -16.3632, 21.7575
Hunter-Lab	71.9482, 2.6958, 17.7359

Details

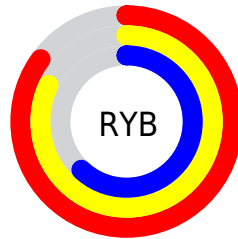
The Yxy color **51.7655, 0.3620, 0.3615** is a light color, and the websafe version is hex **FFCC99**. A complement of this color would be **48.6029, 0.2703, 0.2941**, and the grayscale version is **52.3020, 0.3127, 0.3290**.

A 20% lighter version of the original color is **88.9747, 0.3397, 0.3568**, and **25.0376, 0.3744, 0.3690** is the 20% darker color. If you saturate the color by 10%, you get **46.4557, 0.3852, 0.3742**, and if you desaturate by 10%, it is **57.6025, 0.3415, 0.3489**.

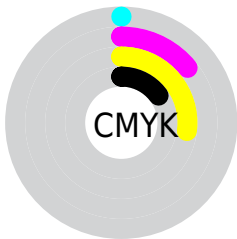
Distribution



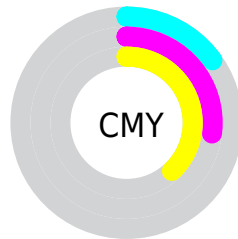
- Red (85%)
- Green (73%)
- Blue (62%)



- Red (85%)
- Yellow (82%)
- Blue (62%)



- Cyan (0%)
- Magenta (14%)
- Yellow (27%)
- Black (15%)





- Cyan (15%)
- Magenta (27%)
- Yellow (38%)

Brightness & Saturation Gradients


These gradients show how the Yxy color 51.7655, 0.3620, 0.3615 changes by changing the brightness by 10 percent. The first figure shows a shift by +10% for each color and the second figure -10%.


Similar to the brightness gradients but the following saturation gradients show a change of the Yxy color 51.7655, 0.3620, 0.3615 by changing the saturation by 10% instead.

 51.7655, 0.3620,
0.3615


 51.7655, 0.3620,
0.3615


393.5306, 0.3377,
0.3459

 36.8182, 0.3679,
0.3652


 92.7853, 0.3533,
0.3560

 25.0668, 0.3755,
0.3697


 119.6266, 0.3499,
0.3539

 16.1268, 0.3854,
0.3755


151.2013, 0.3471,
0.3521

 9.6139, 0.3989,
0.3832

187.8939, 0.3447,
0.3505

 5.1437, 0.4182,
0.3935

230.0888, 0.3426,
0.3492

 2.3318, 0.4483,
0.4083

278.1702, 0.3408,

 0.7905, 0.5395,

0.3480

0.4605

332.5227, 0.3391,
0.3469

0.0000, 0.0000,
0.0000

51.7655, 0.3620,
0.3615

51.7655, 0.3620,
0.3615

46.4557, 0.3852,
0.3742

57.6025, 0.3415,
0.3489

41.6497, 0.4110,
0.3863

63.9747, 0.3236,
0.3369

37.3330, 0.4389,
0.3970

70.8992, 0.3081,
0.3255

33.4873, 0.4680,
0.4051

78.3898, 0.2946,
0.3150

30.0928, 0.4968,
0.4093

85.7331, 0.2889,
0.3163

■ 27.1276, 0.5233,
0.4085

■ 92.8442, 0.2894,
0.3281

■ 24.5662, 0.5457,
0.4022

■ 93.3388, 0.2894,
0.3289

■ 23.8366, 0.5523,
0.3997

Harmonies

Analogous

The Analogous color harmony consists of three colors that are next to each other on the color wheel.



51.7655, 0.3628, 0.3419



51.7655, 0.3620, 0.3615



51.7655, 0.3476, 0.3735

Triad

The Triadic color harmony groups three colors that are evenly spaced from another and form a triangle on the color wheel.



51.7655, 0.3620, 0.3615



51.7655, 0.2769, 0.3368



51.7655, 0.2998, 0.2889

Complementary

The Complementary color scheme is a pair of colors which are on the opposite of each other on the color wheel.



51.7655, 0.3620, 0.3615



48.6029, 0.2703, 0.2941

Split Complementary

Split-complementary colors differ from the complementary color scheme. The scheme consists of three colors, the original color and two neighbors of the complement color.



51.7655, 0.2779, 0.2863



51.7655, 0.3620, 0.3615



51.7655, 0.2651, 0.3127

Square

The Square scheme is like the rectangle color scheme, but the four colors are evenly spaced on the color wheel.



51.7655, 0.3620, 0.3615



51.7655, 0.2982, 0.3596



51.7655, 0.2655, 0.2946



51.7655, 0.3260, 0.3011

Rectangle

The Rectangle color scheme consists of four colors that form a rectangle on the color wheel.



51.7655, 0.3620, 0.3615



51.7655, 0.3325, 0.3749



51.7655, 0.2655, 0.2946



51.7655, 0.2917, 0.2869

Sweetspot

The Sweet Spot groups the original color and five complimentary colors.



51.7679, 0.3620, 0.3615



91.9996, 0.3257, 0.3383



42.7555, 0.3393, 0.2911



19.3822, 0.3283, 0.3401



0.0000, 0.0000, 0.0000



21.4041, 0.3127, 0.3290

Same Dimension

The Same Dimension uses a secret algorithm to generate beautiful new colors.



51.7679, 0.3620, 0.3615



71.0902, 0.3743, 0.3684



64.7041, 0.3539, 0.3927



13.3651, 0.3280, 0.3399



14.3207, 0.5498, 0.4017



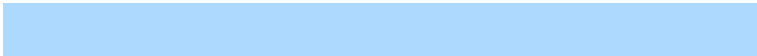
1.0285, 0.5215, 0.4241

Inverse Universe

The Inverse Universe completely reimagines the original color for something new.



48.6029, 0.2703, 0.2941



65.7653, 0.2616, 0.2858



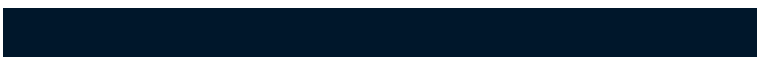
37.6693, 0.2667, 0.2562



13.0960, 0.2982, 0.3179



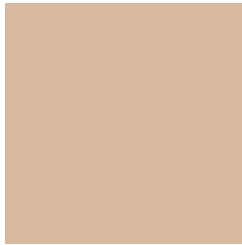
10.4588, 0.1806, 0.1702



0.7958, 0.1889, 0.1999

Previews

White Background



This preview shows how the Yxy color 51.7655, 0.3620, 0.3615 looks on a white background.

Color Contrast Check

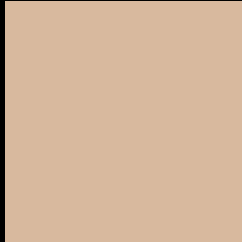
Large Text (above 18pt) WCAG AA × Fail

Any Text WCAG AA × Fail

Large Text (above 18pt) WCAG AAA × Fail

Any Text WCAG AAA × Fail

Black Background



This preview shows how the Yxy color 51.7655, 0.3620, 0.3615 looks on a black background.

Color Contrast Check

Large Text (above 18pt) WCAG AA ✓ Pass

Any Text WCAG AA ✓ Pass

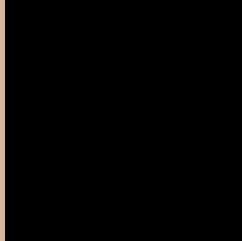
Large Text (above 18pt) WCAG AAA ✓ Pass

Any Text WCAG AAA ✓ Pass

If you want to check with other color combinations, try the [Color Contrast Checker](#).

Yxy 51.7655, 0.3620, 0.3615

Background



This preview shows how black text looks on a background with the Yxy color 51.7655, 0.3620, 0.3615.



This preview shows how white text looks on a background with the Yxy color 51.7655, 0.3620, 0.3615.

Color Blindness Simulation

Color vision deficiency is a very complex topic, and I could not describe the different causes any better than Wikipedia does, so if you want to learn more, you should check out their [article about color blindness](#).

Dichromacy



Original Color

51.7655, 0.3620, 0.3615

Protanopia

51.8176, 0.3449, 0.3652

Deuteranopia

51.5512, 0.3662, 0.3588



Tritanopia

51.7532, 0.3359, 0.3128

Trichromacy



Original Color

51.7655, 0.3620, 0.3615

Protanomaly

51.6263, 0.3506, 0.3635

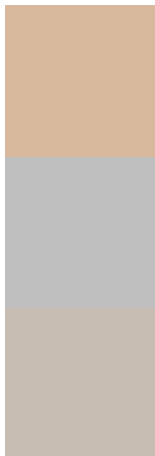
Deuteranomaly

51.8097, 0.3650, 0.3600

Tritanomaly

51.8522, 0.3457, 0.3303

Monochromacy



Original Color

51.7655, 0.3620, 0.3615

Achromatopsia

52.0996, 0.3127, 0.3290

Achromatomaly

51.9292, 0.3297, 0.3414

CSS Examples

Text

The CSS property to change the color of the text to Yxy 51.7655, 0.3620, 0.3615 is called "color". The color property can be set on classes, ids or directly on the HTML element.

This example shows how text in the color `rgb(216, 185, 158)` looks like.

```
.text, #text, p{  
    color:rgb(216, 185, 158)  
}
```

If you want to add a text shadow in that color use the text-shadow property, you can generate a text shadow directly with our [CSS Text Shadow Generator](#).

Here you see how black text with a 4 pixel rgb(216, 185, 158) colored shadow looks like.

```
.shadow{ text-shadow: 4px 4px 2px rgb(216, 185, 158) }
```

Border

The CSS property to change the border of an element to Yxy 51.7655, 0.3620, 0.3615 is called "border". The border property can be set on classes, ids or directly on the HTML element.

This example shows the color as border, it can be applied via the CSS property "border" or "border-color".

```
.border, #border, table{ border:4px solid rgb(216, 185, 158) }
```

If only the border color should be changed use the property `border-color`.

```
.border{ border-color:rgb(216, 185, 158) }
```

If you want to add a box shadow in that color use:

Here you see how a box with a 4 pixel `rgb(216, 185, 158)` colored shadow looks like.

```
.boxshadow{ -moz-box-shadow:4px 4px 4px  
4px rgb(216, 185, 158); -webkit-box-  
shadow:4px 4px 4px 4px rgb(216, 185, 158);  
box-shadow:4px 4px 4px 4px rgb(216, 185,  
158) }
```


Background

The CSS property to change the background color of an element to Yxy 51.7655, 0.3620, 0.3615 is called "background". The background property can be set on classes, ids or directly on the HTML element.

```
.background, #background, body{  
background: rgb(216, 185, 158) }
```

If only the background color should be changed can be used:

```
.background{ background-color: rgb(216,  
185, 158) }
```

This example shows the color as background, it is applied via the CSS property "background".

To optimize and compress your CSS code, you can use our [online CSS compressor and optimizer](#) based on csstidy. If you want to create a linear or radial gradient as background or border, check our [CSS Gradient Generator](#).

Hey! You found this booklet interesting? Support Converting Colors with the new Membership Option!

The pro membership hides all ads, plus gives you double the colors in the color bucket, and more awesome pro features!

[Learn more, Memberships starting at \\$2.50/m!](#)

**Follow me
on Twitter!**

@ConvertingColor