

# Converting Colors

Yxy(51.8395, 0.3282, 0.3195)

Have a look what the booklet for  
Yxy(51.8395, 0.3282, 0.3195)  
contains.

<b>Yxy(51.7884, 0.3284, 0.3195)</b> .....	3
<b>Conversions</b> .....	4
<b>Details</b> .....	6
<b>Harmonies</b> .....	12
<b>Previews</b> .....	24
<b>Color Blindness Simulation</b> .....	27
<b>CSS Examples</b> .....	30

# Color

**Yxy(51.7884, 0.3284, 0.3195)**

# Conversions

## Conversions Part 1

Format	Color
Hex	D2B8C0
RGB	210, 184, 192
RGB Percent	82%, 72%, 75%
CMY	0.1765, 0.2784, 0.2470
CMYK	0.00, 0.12, 0.09, 0.18
HSL	341°, 22%, 77%
HSV	341°, 12%, 82%
XYZ	53.2310, 51.7884, 57.0726
YIQ	192.6860, 12.9280, 8.0000

# Conversions

## Conversions Part 2

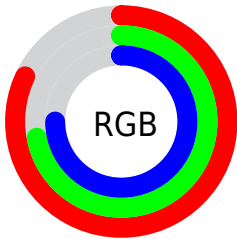
<b>Format</b>	<b>Color</b>
<b>R<sub>YB</sub></b>	210, 184, 192
Decimal	13809856
CIE Lab	77.15, 10.61, -0.65
CIE LCh	77, 10.634, 356.514
Yxy	51.7884, 0.3284, 0.3195
Android (android.graphics.Color)	4291999936 (0xFFD2B8C0)
YUV	192.6860, -0.3382, 15.1844
Hunter-Lab	71.9642, 6.0970, 3.3538

# Details

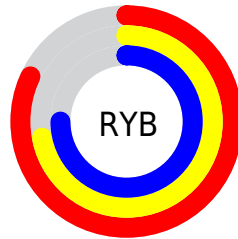
The Yxy color **51.7884, 0.3284, 0.3195** is a light color, and the websafe version is hex **CCCCCC**. A complement of this color would be **60.5381, 0.2992, 0.3387**, and the grayscale version is **53.1316, 0.3127, 0.3290**.

A 20% lighter version of the original color is **90.3575, 0.3177, 0.3213**, and **25.0652, 0.3318, 0.3163** is the 20% darker color. If you saturate the color by 10%, you get **43.0918, 0.3443, 0.3113**, and if you desaturate by 10%, it is **61.8479, 0.3154, 0.3272**.

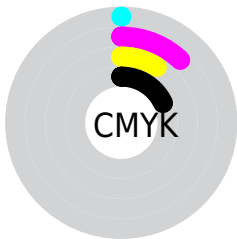
# Distribution



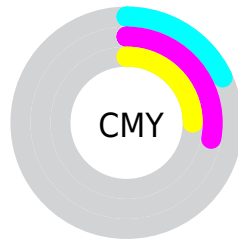
- Red (82%)
- Green (72%)
- Blue (75%)



- Red (82%)
- Yellow (72%)
- Blue (75%)



- Cyan (0%)
- Magenta (12%)
- Yellow (9%)
- Black (18%)




- Cyan (18%)
- Magenta (28%)
- Yellow (25%)

# Brightness & Saturation Gradients

These gradients show how the Yxy color 51.7884, 0.3284, 0.3195 changes by changing the brightness by 10 percent. The first figure shows a shift by +10% for each color and the second figure -10%.

Similar to the brightness gradients but the following saturation gradients show a change of the Yxy color 51.7884, 0.3284, 0.3195 by changing the saturation by 10% instead.





 51.7884, 0.3284,  
0.3195

 51.7884, 0.3284,  
0.3195


393.6192, 0.3207,  
0.3242

 36.8364, 0.3303,  
0.3184


 92.8191, 0.3256,  
0.3212

 25.0809, 0.3327,  
0.3169

119.6666, 0.3246,  
0.3218

 16.1373, 0.3358,  
0.3150


151.2481, 0.3237,  
0.3223

 9.6214, 0.3402,  
0.3124

187.9480, 0.3229,  
0.3228

 5.1487, 0.3465,  
0.3086

230.1507, 0.3223,  
0.3232

 2.3347, 0.3566,  
0.3026

278.2405, 0.3217,

 0.7920, 0.3759,

0.3236

0.2908

332.6018, 0.3212,  
0.3239

0.0000, 0.0000,  
0.0000

51.7884, 0.3284,  
0.3195

51.7884, 0.3284,  
0.3195

43.0918, 0.3443,  
0.3113

61.8479, 0.3154,  
0.3272

35.6927, 0.3637,  
0.3029

73.3185, 0.3048,  
0.3344

29.5303, 0.3872,  
0.2947

86.2546, 0.2962,  
0.3411

24.5363, 0.4150,  
0.2874

92.1272, 0.2886,  
0.3340

20.6358, 0.4470,  
0.2819

92.4389, 0.2860,  
0.3289

■ 17.7452, 0.4822,  
0.2793

■ 15.7683, 0.5183,  
0.2809

■ 14.5902, 0.5523,  
0.2872

■ 14.0781, 0.5753,  
0.2943

# Harmonies

## Analogous

The Analogous color harmony consists of three colors that are next to each other on the color wheel.



51.7884, 0.3144, 0.3098



51.7884, 0.3284, 0.3195



51.7884, 0.3382, 0.3317

# Triad

The Triadic color harmony groups three colors that are evenly spaced from another and form a triangle on the color wheel.



51.7884, 0.3284, 0.3195



51.7884, 0.3248, 0.3541



51.7884, 0.2852, 0.3136

# Complementary

The Complementary color scheme is a pair of colors which are on the opposite of each other on the color wheel.



51.7884, 0.3284, 0.3195



60.5381, 0.2992, 0.3387

# Split Complementary

Split-complementary colors differ from the complementary color scheme. The scheme consists of three colors, the original color and two neighbors of the complement color.



51.7884, 0.2878, 0.3254



51.7884, 0.3284, 0.3195



51.7884, 0.3105, 0.3493

# Square

The Square scheme is like the rectangle color scheme, but the four colors are evenly spaced on the color wheel.



51.7884, 0.3284, 0.3195



51.7884, 0.3361, 0.3519



51.7884, 0.2970, 0.3387



51.7884, 0.2897, 0.3063



# Rectangle

The Rectangle color scheme consists of four colors that form a rectangle on the color wheel.



51.7884, 0.3284, 0.3195



51.7884, 0.3410, 0.3398



51.7884, 0.2970, 0.3387



51.7884, 0.2853, 0.3172

# Sweetspot

The Sweet Spot groups the original color and five complimentary colors.



51.7907, 0.3284, 0.3195



93.2179, 0.3174, 0.3260



51.4599, 0.3074, 0.2981



19.6880, 0.3183, 0.3254



0.0000, 0.0000, 0.0000



21.4041, 0.3127, 0.3290



# Same Dimension

The Same Dimension uses a secret algorithm to generate beautiful new colors.



51.7907, 0.3284, 0.3195



76.3891, 0.3325, 0.3173



53.4568, 0.3342, 0.3348



11.8675, 0.3243, 0.3219



8.6051, 0.5715, 0.2922



0.4953, 0.5186, 0.2630



# Inverse Universe

The Inverse Universe completely reimagines the original color for something new.



51.7907, 0.3284, 0.3195



76.3891, 0.3325, 0.3173



58.6116, 0.2938, 0.3232



11.8675, 0.3243, 0.3219



8.6051, 0.5715, 0.2922

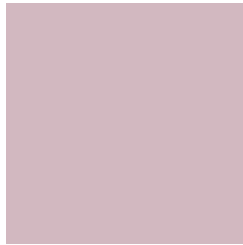


0.4953, 0.5186, 0.2630



# Previews

## White Background



This preview shows how the Yxy color 51.7884, 0.3284, 0.3195 looks on a white background.

## Color Contrast Check

Large Text (above 18pt) WCAG AA × Fail

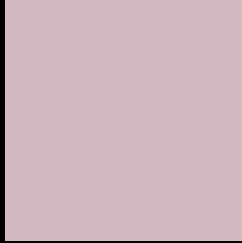
Any Text WCAG AA × Fail

Large Text (above 18pt) WCAG AAA × Fail

Any Text WCAG AAA × Fail



# Black Background



This preview shows how the Yxy color 51.7884, 0.3284, 0.3195 looks on a black background.

## Color Contrast Check

Large Text (above 18pt) WCAG AA ✓ Pass

Any Text WCAG AA ✓ Pass

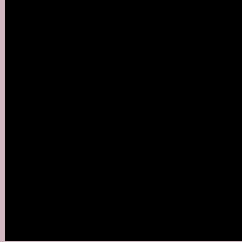
Large Text (above 18pt) WCAG AAA ✓ Pass

Any Text WCAG AAA ✓ Pass

If you want to check with other color combinations, try the [Color Contrast Checker](#).

**Yxy 51.7884, 0.3284, 0.3195**

## **Background**



This preview shows how black text looks on a background with the Yxy color 51.7884, 0.3284, 0.3195.



This preview shows how white text looks on a background with the Yxy color 51.7884, 0.3284, 0.3195.

# Color Blindness Simulation

Color vision deficiency is a very complex topic, and I could not describe the different causes any better than Wikipedia does, so if you want to learn more, you should check out their [article about color blindness](#).

## Dichromacy



### Original Color

51.7884, 0.3284, 0.3195

### Protanopia

52.1045, 0.3114, 0.3228

### Deuteranopia

51.9136, 0.3266, 0.3207



## Tritanopia

51.7471, 0.3253, 0.3125

# Trichromacy



## Original Color

51.7884, 0.3284, 0.3195

## Protanomaly

52.0036, 0.3172, 0.3217

## Deuteranomaly

52.0590, 0.3275, 0.3207

## Tritanomaly

51.6560, 0.3270, 0.3148

# Monochromacy



## Original Color

51.7884, 0.3284, 0.3195

## Achromatopsia

53.3276, 0.3127, 0.3290

## Achromatomaly

52.8193, 0.3178, 0.3254

# CSS Examples

## Text

The CSS property to change the color of the text to Yxy 51.7884, 0.3284, 0.3195 is called "color". The color property can be set on classes, ids or directly on the HTML element.

This example shows how text in the color `rgb(210, 184, 192)` looks like.

```
.text, #text, p{  
    color:rgb(210, 184, 192)  
}
```

If you want to add a text shadow in that color use the text-shadow property, you can generate a text shadow directly with our [CSS Text Shadow Generator](#).

Here you see how black text with a 4 pixel rgb(210, 184, 192) colored shadow looks like.

```
.shadow{ text-shadow: 4px 4px 2px rgb(210, 184, 192) }
```

## Border

The CSS property to change the border of an element to Yxy 51.7884, 0.3284, 0.3195 is called "border". The border property can be set on classes, ids or directly on the HTML element.

This example shows the color as border, it can be applied via the CSS property "border" or "border-color".

```
.border, #border, table{ border:4px solid rgb(210, 184, 192) }
```

If only the border color should be changed use the property `border-color`.

```
.border{ border-color:rgb(210, 184, 192) }
```

If you want to add a box shadow in that color use:

Here you see how a box with a 4 pixel `rgb(210, 184, 192)` colored shadow looks like.

```
.boxshadow{ -moz-box-shadow:4px 4px 4px  
4px rgb(210, 184, 192); -webkit-box-  
shadow:4px 4px 4px 4px rgb(210, 184, 192);  
box-shadow:4px 4px 4px 4px rgb(210, 184,  
192) }
```



# Background

The CSS property to change the background color of an element to Yxy 51.7884, 0.3284, 0.3195 is called "background". The background property can be set on classes, ids or directly on the HTML element.

```
.background, #background, body{  
background: rgb(210, 184, 192) }
```

If only the background color should be changed can be used:

```
.background{ background-color: rgb(210,  
184, 192) }
```

This example shows the color as background, it is applied via the CSS property "background".

To optimize and compress your CSS code, you can use our [online CSS compressor and optimizer](#) based on csstidy. If you want to create a linear or radial gradient as background or border, check our [CSS Gradient Generator](#).

Hey! You found this booklet interesting? Support Converting Colors with the new Membership Option!

The pro membership hides all ads, plus gives you double the colors in the color bucket, and more awesome pro features!

**[Learn more, Memberships starting at \\$2.50/m!](#)**

**Follow me  
on Twitter!**

@ConvertingColor