

# Converting Colors

Yxy(51.9136, 0.3266, 0.3207)

Have a look what the booklet for  
Yxy(51.9136, 0.3266, 0.3207)  
contains.

<b>Yxy(51.9136, 0.3266, 0.3207)</b> .....	3
<b>Conversions</b> .....	4
<b>Details</b> .....	6
<b>Harmonies</b> .....	12
<b>Previews</b> .....	24
<b>Color Blindness Simulation</b> .....	27
<b>CSS Examples</b> .....	30

# Color

**Yxy(51.9136, 0.3266, 0.3207)**

# Conversions

## Conversions Part 1

Format	Color
Hex	D0B9C0
RGB	208, 185, 192
RGB Percent	82%, 73%, 75%
CMY	0.1844, 0.2744, 0.2471
CMYK	0.00, 0.11, 0.08, 0.18
HSL	342°, 20%, 77%
HSV	342°, 11%, 82%
XYZ	52.8687, 51.9136, 57.0936
YIQ	192.6750, 11.4610, 7.0530

# Conversions

## Conversions Part 2

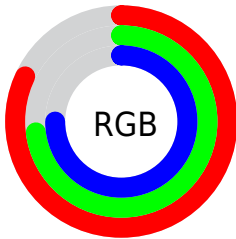
<b>Format</b>	<b>Color</b>
R <sub>Y</sub> B	208, 185, 192
Decimal	13679040
CIE Lab	77.23, 9.35, -0.54
CIE LCh	77, 9.369, 356.713
Yxy	51.9136, 0.3266, 0.3207
Android (android.graphics.Color)	4291869120 (0xFFD0B9C0)
YUV	192.6750, -0.3328, 13.4400
Hunter-Lab	72.0511, 4.8879, 3.4541

# Details

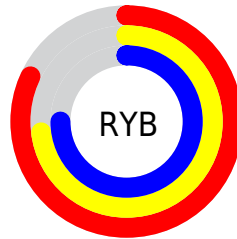
The Yxy color  $51.9136, 0.3266, 0.3207$  is a light color, and the websafe version is hex `CCCCCC`. A complement of this color would be  $59.6325, 0.3005, 0.3375$ , and the grayscale version is  $53.1239, 0.3127, 0.3290$ .

A 20% lighter version of the original color is  $90.9479, 0.3176, 0.3223$ , and  $25.2366, 0.3305, 0.3179$  is the 20% darker color. If you saturate the color by 10%, you get  $43.2297, 0.3422, 0.3127$ , and if you desaturate by 10%, it is  $61.9380, 0.3139, 0.3282$ .

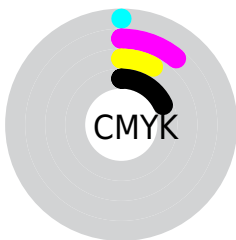
# Distribution



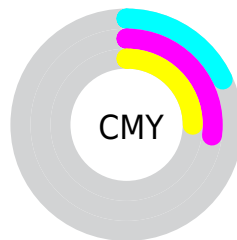
- Red (82%)
- Green (73%)
- Blue (75%)



- Red (82%)
- Yellow (73%)
- Blue (75%)



- Cyan (0%)
- Magenta (11%)
- Yellow (8%)
- Black (18%)




- Cyan (18%)
- Magenta (27%)
- Yellow (25%)


# Brightness & Saturation Gradients

These gradients show how the Yxy color 51.9136, 0.3266, 0.3207 changes by changing the brightness by 10 percent. The first figure shows a shift by +10% for each color and the second figure -10%.

Similar to the brightness gradients but the following saturation gradients show a change of the Yxy color 51.9136, 0.3266, 0.3207 by changing the saturation by 10% instead.




 51.9136, 0.3266,  
0.3207

 51.9136, 0.3266,  
0.3207


394.1030, 0.3198,  
0.3248

 36.9362, 0.3283,  
0.3197

 93.0038, 0.3242,  
0.3222

 25.1581, 0.3304,  
0.3184


119.8854, 0.3232,  
0.3227

 16.1949, 0.3332,  
0.3168


151.5039, 0.3224,  
0.3232

 9.6622, 0.3370,  
0.3145

188.2436, 0.3218,  
0.3236

 5.1755, 0.3426,  
0.3112

230.4890, 0.3212,  
0.3239

 2.3506, 0.3515,  
0.3059

278.6244, 0.3207,

 0.8003, 0.3686,

0.3243

0.2956

333.0343, 0.3202,  
0.3245

0.0000, 0.0000,  
0.0000

51.9136, 0.3266,  
0.3207

51.9136, 0.3266,  
0.3207

43.2297, 0.3422,  
0.3127

61.9380, 0.3139,  
0.3282

35.8227, 0.3612,  
0.3045

73.3496, 0.3035,  
0.3352

29.6339, 0.3843,  
0.2964

86.2011, 0.2951,  
0.3417

24.5974, 0.4117,  
0.2890

91.8233, 0.2875,  
0.3342

20.6408, 0.4435,  
0.2833

92.1461, 0.2849,  
0.3289

■ 17.6837, 0.4786,  
0.2803

■ 15.6342, 0.5150,  
0.2814

■ 14.3830, 0.5496,  
0.2871

■ 13.7664, 0.5770,  
0.2952

# Harmonies

## Analogous

The Analogous color harmony consists of three colors that are next to each other on the color wheel.



51.9136, 0.3144, 0.3121



51.9136, 0.3266, 0.3207



51.9136, 0.3352, 0.3315

# Triad

The Triadic color harmony groups three colors that are evenly spaced from another and form a triangle on the color wheel.



51.9136, 0.3266, 0.3207



51.9136, 0.3233, 0.3511



51.9136, 0.2884, 0.3154

# Complementary

The Complementary color scheme is a pair of colors which are on the opposite of each other on the color wheel.



51.9136, 0.3266, 0.3207



59.6325, 0.3005, 0.3375

# Split Complementary

Split-complementary colors differ from the complementary color scheme. The scheme consists of three colors, the original color and two neighbors of the complement color.



51.9136, 0.2908, 0.3258



51.9136, 0.3266, 0.3207



51.9136, 0.3107, 0.3468

# Square

The Square scheme is like the rectangle color scheme, but the four colors are evenly spaced on the color wheel.



51.9136, 0.3266, 0.3207



51.9136, 0.3332, 0.3492



51.9136, 0.2988, 0.3374



51.9136, 0.2925, 0.3089



# Rectangle

The Rectangle color scheme consists of four colors that form a rectangle on the color wheel.



51.9136, 0.3266, 0.3207



51.9136, 0.3376, 0.3387



51.9136, 0.2988, 0.3374



51.9136, 0.2885, 0.3186

# Sweetspot

The Sweet Spot groups the original color and five complimentary colors.



51.9159, 0.3266, 0.3207



94.8774, 0.3162, 0.3268



51.6340, 0.3080, 0.3016



20.0219, 0.3172, 0.3262



0.0000, 0.0000, 0.0000



21.4041, 0.3127, 0.3290



# Same Dimension

The Same Dimension uses a secret algorithm to generate beautiful new colors.



51.9159, 0.3266, 0.3207



79.2442, 0.3296, 0.3190



53.4016, 0.3317, 0.3341



11.8665, 0.3244, 0.3220



8.5976, 0.5733, 0.2932



0.4948, 0.5203, 0.2640



# Inverse Universe

The Inverse Universe completely reimagines the original color for something new.



51.9159, 0.3266, 0.3207



79.2442, 0.3296, 0.3190



57.9431, 0.2958, 0.3238



11.8665, 0.3244, 0.3220



8.5976, 0.5733, 0.2932

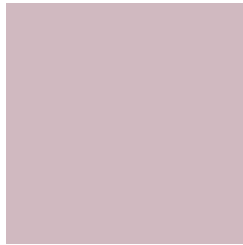


0.4948, 0.5203, 0.2640



# Previews

## White Background



This preview shows how the Yxy color 51.9136, 0.3266, 0.3207 looks on a white background.

## Color Contrast Check

Large Text (above 18pt) WCAG AA × Fail

Any Text WCAG AA × Fail

Large Text (above 18pt) WCAG AAA × Fail

Any Text WCAG AAA × Fail



# Black Background



This preview shows how the Yxy color 51.9136, 0.3266, 0.3207 looks on a black background.

## Color Contrast Check

Large Text (above 18pt) WCAG AA ✓ Pass

Any Text WCAG AA ✓ Pass

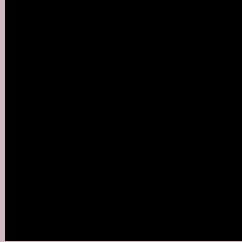
Large Text (above 18pt) WCAG AAA ✓ Pass

Any Text WCAG AAA ✓ Pass

If you want to check with other color combinations, try the [Color Contrast Checker](#).

**Yxy 51.9136, 0.3266, 0.3207**

## **Background**



This preview shows how black text looks on a background with the Yxy color 51.9136, 0.3266, 0.3207.



This preview shows how white text looks on a background with the Yxy color 51.9136, 0.3266, 0.3207.

# Color Blindness Simulation

Color vision deficiency is a very complex topic, and I could not describe the different causes any better than Wikipedia does, so if you want to learn more, you should check out their [article about color blindness](#).

## Dichromacy



### Original Color

51.9136, 0.3266, 0.3207

### Protanopia

52.1045, 0.3114, 0.3228

### Deuteranopia

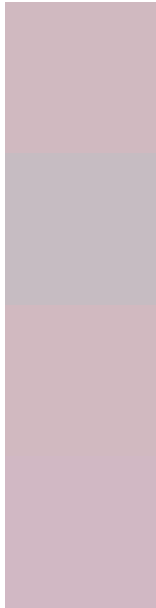
52.0590, 0.3275, 0.3207



## Tritanopia

51.9135, 0.3227, 0.3124

# Trichromacy



## Original Color

51.9136, 0.3266, 0.3207

## Protanomaly

51.8672, 0.3164, 0.3217

## Deuteranomaly

52.0590, 0.3275, 0.3207

## Tritanomaly

51.8218, 0.3243, 0.3148

# Monochromacy



## Original Color

51.9136, 0.3266, 0.3207

## Achromatopsia

53.3276, 0.3127, 0.3290

## Achromatomaly

52.6829, 0.3170, 0.3254

# CSS Examples

## Text

The CSS property to change the color of the text to Yxy 51.9136, 0.3266, 0.3207 is called "color". The color property can be set on classes, ids or directly on the HTML element.

This example shows how text in the color `rgb(208, 185, 192)` looks like.

```
.text, #text, p{  
    color:rgb(208, 185, 192)  
}
```

If you want to add a text shadow in that color use the text-shadow property, you can generate a text shadow directly with our [CSS Text Shadow Generator](#).

Here you see how black text with a 4 pixel rgb(208, 185, 192) colored shadow looks like.

```
.shadow{ text-shadow: 4px 4px 2px rgb(208, 185, 192) }
```

## Border

The CSS property to change the border of an element to Yxy 51.9136, 0.3266, 0.3207 is called "border". The border property can be set on classes, ids or directly on the HTML element.

This example shows the color as border, it can be applied via the CSS property "border" or "border-color".

```
.border, #border, table{ border:4px solid rgb(208, 185, 192) }
```

If only the border color should be changed use the property border-color.

```
.border{ border-color:rgb(208, 185, 192) }
```

If you want to add a box shadow in that color use:

Here you see how a box with a 4 pixel rgb(208, 185, 192) colored shadow looks like.

```
.boxshadow{ -moz-box-shadow:4px 4px 4px  
4px rgb(208, 185, 192); -webkit-box-  
shadow:4px 4px 4px 4px rgb(208, 185, 192);  
box-shadow:4px 4px 4px 4px rgb(208, 185,  
192) }
```



# Background

The CSS property to change the background color of an element to Yxy 51.9136, 0.3266, 0.3207 is called "background". The background property can be set on classes, ids or directly on the HTML element.

```
.background, #background, body{  
background: rgb(208, 185, 192) }
```

If only the background color should be changed can be used:

```
.background{ background-color: rgb(208,  
185, 192) }
```

This example shows the color as background, it is applied via the CSS property "background".

To optimize and compress your CSS code, you can use our [online CSS compressor and optimizer](#) based on csstidy. If you want to create a linear or radial gradient as background or border, check our [CSS Gradient Generator](#).

Hey! You found this booklet interesting? Support Converting Colors with the new Membership Option!

The pro membership hides all ads, plus gives you double the colors in the color bucket, and more awesome pro features!

**[Learn more, Memberships starting at \\$2.50/m!](#)**

**Follow me  
on Twitter!**

@ConvertingColor