

Converting Colors

Yxy(51.9262, 0.3689, 0.3659)

Have a look what the booklet for
Yxy(51.9262, 0.3689, 0.3659)
contains.

Yxy(52.0911, 0.3681, 0.3659)	3
<i>Conversions</i>	4
<i>Details</i>	6
<i>Harmonies</i>	12
<i>Previews</i>	24
<i>Color Blindness Simulation</i>	27
<i>CSS Examples</i>	30

Color

Yxy(52.0911, 0.3681, 0.3659)

Conversions

Conversions Part 1

Format	Color
Hex	DBB99A
RGB	219, 185, 154
RGB Percent	86%, 73%, 60%
CMY	0.1410, 0.2745, 0.3960
CMYK	0.00, 0.16, 0.30, 0.14
HSL	29°, 47%, 73%
HSV	29°, 30%, 86%
XYZ	52.4043, 52.0911, 37.8689
YIQ	191.6320, 30.2150, -2.4330

Conversions

Conversions Part 2

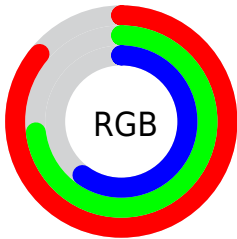
Format	Color
R _Y B	219, 213, 154
Decimal	14399898
CIE Lab	77.34, 7.69, 20.27
CIE LCh	77, 21.683, 69.231
Yxy	52.0911, 0.3681, 0.3659
Android (android.graphics.Color)	4292589978 (0xFFDDBB9A)
YUV	191.6320, -18.5526, 24.0017
Hunter-Lab	72.1742, 3.3007, 19.4132

Details

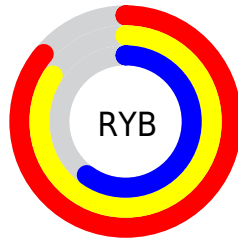
The Yxy color **52.0911, 0.3681, 0.3659** is a light color, and the websafe version is hex **FFCC99**. A complement of this color would be **47.9795, 0.2656, 0.2889**, and the grayscale version is **52.5871, 0.3127, 0.3290**.

A 20% lighter version of the original color is **88.7247, 0.3429, 0.3619**, and **25.2683, 0.3827, 0.3748** is the 20% darker color. If you saturate the color by 10%, you get **46.8226, 0.3919, 0.3788**, and if you desaturate by 10%, it is **57.8847, 0.3470, 0.3530**.

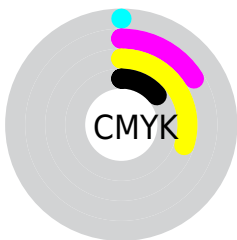
Distribution



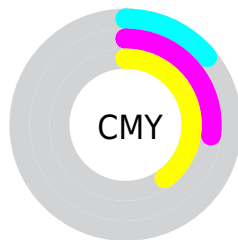
- Red (86%)
- Green (73%)
- Blue (60%)



- Red (86%)
- Yellow (84%)
- Blue (60%)



- Cyan (0%)
- Magenta (16%)
- Yellow (30%)
- Black (14%)





- Cyan (14%)
- Magenta (27%)
- Yellow (40%)

Brightness & Saturation Gradients

These gradients show how the Yxy color 52.0911, 0.3681, 0.3659 changes by changing the brightness by 10 percent. The first figure shows a shift by +10% for each color and the second figure -10%.


Similar to the brightness gradients but the following saturation gradients show a change of the Yxy color 52.0911, 0.3681, 0.3659 by changing the saturation by 10% instead.

 52.0911, 0.3681,
0.3659


 52.0911, 0.3681,
0.3659


394.7882, 0.3408,
0.3483

 37.0777, 0.3747,
0.3700


 93.2656, 0.3583,
0.3597

 25.2677, 0.3832,
0.3751


 120.1954, 0.3546,
0.3573

 16.2766, 0.3941,
0.3815


151.8662, 0.3514,
0.3553

 9.7201, 0.4090,
0.3899

188.6624, 0.3487,
0.3535

 5.2138, 0.4301,
0.4010

230.9683, 0.3464,
0.3520

 2.3732, 0.4641,
0.4176

279.1683, 0.3443,

 0.8121, 0.5431,

0.3506

0.4569

333.6468, 0.3425,
0.3494

0.0000, 0.0000,
0.0000

52.0911, 0.3681,
0.3659

52.0911, 0.3681,
0.3659

46.8226, 0.3919,
0.3788

57.8847, 0.3470,
0.3530

42.0556, 0.4181,
0.3909

64.2116, 0.3284,
0.3405

37.7752, 0.4461,
0.4012

71.0891, 0.3122,
0.3286

33.9628, 0.4748,
0.4086

78.5311, 0.2982,
0.3176

30.5979, 0.5027,
0.4117

85.9896, 0.2907,
0.3160

■ 27.6581, 0.5276,
0.4095

■ 93.0448, 0.2911,
0.3277

■ 25.1115, 0.5487,
0.4023

■ 93.8060, 0.2912,
0.3289

■ 25.0374, 0.5493,
0.4020

Harmonies

Analogous

The Analogous color harmony consists of three colors that are next to each other on the color wheel.



52.0911, 0.3695, 0.3439



52.0911, 0.3681, 0.3659



52.0911, 0.3513, 0.3794

Triad

The Triadic color harmony groups three colors that are evenly spaced from another and form a triangle on the color wheel.



52.0911, 0.3681, 0.3659



52.0911, 0.2718, 0.3370



52.0911, 0.2988, 0.2843

Complementary

The Complementary color scheme is a pair of colors which are on the opposite of each other on the color wheel.



52.0911, 0.3681, 0.3659



47.9795, 0.2656, 0.2889

Split Complementary

Split-complementary colors differ from the complementary color scheme. The scheme consists of three colors, the original color and two neighbors of the complement color.



52.0911, 0.2741, 0.2810



52.0911, 0.3681, 0.3659



52.0911, 0.2591, 0.3098

Square

The Square scheme is like the rectangle color scheme, but the four colors are evenly spaced on the color wheel.



52.0911, 0.3681, 0.3659



52.0911, 0.2955, 0.3631



52.0911, 0.2599, 0.2897



52.0911, 0.3284, 0.2982

Rectangle

The Rectangle color scheme consists of four colors that form a rectangle on the color wheel.



52.0911, 0.3681, 0.3659



52.0911, 0.3342, 0.3809



52.0911, 0.2599, 0.2897



52.0911, 0.2897, 0.2819

Sweetspot

The Sweet Spot groups the original color and five complimentary colors.



52.0935, 0.3681, 0.3659



91.1803, 0.3274, 0.3397



41.8419, 0.3439, 0.2882



19.2241, 0.3299, 0.3415



0.0000, 0.0000, 0.0000



21.4041, 0.3127, 0.3290

Same Dimension

The Same Dimension uses a secret algorithm to generate beautiful new colors.



52.0935, 0.3681, 0.3659



68.5051, 0.3835, 0.3745



66.9586, 0.3580, 0.4006



14.0697, 0.3280, 0.3402



15.0567, 0.5469, 0.4039



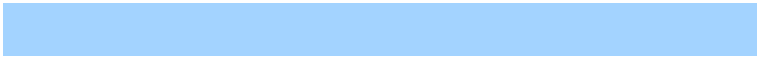
1.1473, 0.5207, 0.4247

Inverse Universe

The Inverse Universe completely reimagines the original color for something new.



47.9795, 0.2656, 0.2889



61.7486, 0.2549, 0.2783



35.8248, 0.2609, 0.2457



13.7398, 0.2982, 0.3176



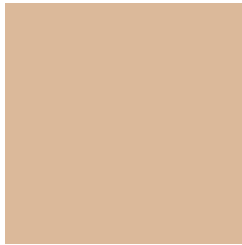
10.4792, 0.1796, 0.1665



0.8511, 0.1875, 0.1950

Previews

White Background



This preview shows how the Yxy color 52.0911, 0.3681, 0.3659 looks on a white background.

Color Contrast Check

Large Text (above 18pt) WCAG AA × Fail

Any Text WCAG AA × Fail

Large Text (above 18pt) WCAG AAA × Fail

Any Text WCAG AAA × Fail

Black Background



This preview shows how the Yxy color 52.0911, 0.3681, 0.3659 looks on a black background.

Color Contrast Check

Large Text (above 18pt) WCAG AA ✓ Pass

Any Text WCAG AA ✓ Pass

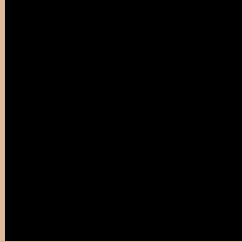
Large Text (above 18pt) WCAG AAA ✓ Pass

Any Text WCAG AAA ✓ Pass

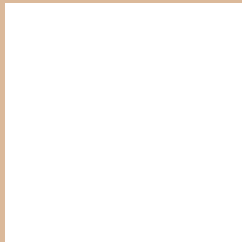
If you want to check with other color combinations, try the [Color Contrast Checker](#).

Yxy 52.0911, 0.3681, 0.3659

Background



This preview shows how black text looks on a background with the Yxy color 52.0911, 0.3681, 0.3659.



This preview shows how white text looks on a background with the Yxy color 52.0911, 0.3681, 0.3659.

Color Blindness Simulation

Color vision deficiency is a very complex topic, and I could not describe the different causes any better than Wikipedia does, so if you want to learn more, you should check out their [article about color blindness](#).

Dichromacy



Original Color

52.0911, 0.3681, 0.3659

Protanopia

52.2525, 0.3487, 0.3713

Deuteranopia

52.1437, 0.3711, 0.3644



Tritanopia

51.7784, 0.3396, 0.3130

Trichromacy



Original Color

52.0911, 0.3681, 0.3659

Protanomaly

52.2054, 0.3554, 0.3695

Deuteranomaly

51.9862, 0.3702, 0.3646

Tritanomaly

51.8320, 0.3503, 0.3314

Monochromacy



Original Color

52.0911, 0.3681, 0.3659

Achromatopsia

52.7115, 0.3127, 0.3290

Achromatomaly

52.1661, 0.3322, 0.3426

CSS Examples

Text

The CSS property to change the color of the text to Yxy 52.0911, 0.3681, 0.3659 is called "color". The color property can be set on classes, ids or directly on the HTML element.

This example shows how text in the color `rgb(219, 185, 154)` looks like.

```
.text, #text, p{  
    color:rgb(219, 185, 154)  
}
```

If you want to add a text shadow in that color use the text-shadow property, you can generate a text shadow directly with our [CSS Text Shadow Generator](#).

Here you see how black text with a 4 pixel rgb(219, 185, 154) colored shadow looks like.

```
.shadow{ text-shadow: 4px 4px 2px rgb(219, 185, 154) }
```

Border

The CSS property to change the border of an element to Yxy 52.0911, 0.3681, 0.3659 is called "border". The border property can be set on classes, ids or directly on the HTML element.

This example shows the color as border, it can be applied via the CSS property "border" or "border-color".

```
.border, #border, table{ border:4px solid rgb(219, 185, 154) }
```

If only the border color should be changed use the property `border-color`.

```
.border{ border-color:rgb(219, 185, 154) }
```

If you want to add a box shadow in that color use:

Here you see how a box with a 4 pixel `rgb(219, 185, 154)` colored shadow looks like.

```
.boxshadow{ -moz-box-shadow:4px 4px 4px  
4px rgb(219, 185, 154); -webkit-box-  
shadow:4px 4px 4px 4px rgb(219, 185, 154);  
box-shadow:4px 4px 4px 4px rgb(219, 185,  
154) }
```


Background

The CSS property to change the background color of an element to Yxy 52.0911, 0.3681, 0.3659 is called "background". The background property can be set on classes, ids or directly on the HTML element.

```
.background, #background, body{  
background: rgb(219, 185, 154) }
```

If only the background color should be changed can be used:

```
.background{ background-color: rgb(219,  
185, 154) }
```

This example shows the color as background, it is applied via the CSS property "background".

To optimize and compress your CSS code, you can use our [online CSS compressor and optimizer](#) based on csstidy. If you want to create a linear or radial gradient as background or border, check our [CSS Gradient Generator](#).

Hey! You found this booklet interesting? Support Converting Colors with the new Membership Option!

The pro membership hides all ads, plus gives you double the colors in the color bucket, and more awesome pro features!

[Learn more, Memberships starting at \\$2.50/m!](#)

**Follow me
on Twitter!**

@ConvertingColor