

Converting Colors

$Yxy(52.0028, 0.3431, 0.3248)$

Have a look what the booklet for
Yxy(52.0028, 0.3431, 0.3248)
contains.

| | |
|--|----|
| Yxy(52.1743, 0.3432, 0.3256) | 3 |
| <i>Conversions</i> | 4 |
| <i>Details</i> | 6 |
| <i>Harmonies</i> | 12 |
| <i>Previews</i> | 24 |
| <i>Color Blindness Simulation</i> | 27 |
| <i>CSS Examples</i> | 30 |

Color

Yxy(52.1743, 0.3432, 0.3256)

Conversions

Conversions Part 1

| Format | Color |
|-------------|---------------------------|
| Hex | DCB6B9 |
| RGB | 220, 182, 185 |
| RGB Percent | 86%, 71%, 73% |
| CMY | 0.1374, 0.2862, 0.2745 |
| CMYK | 0.00, 0.17, 0.16, 0.14 |
| HSL | 355°, 35%, 79% |
| HSV | 355°, 17%, 86% |
| XYZ | 54.9945, 52.1743, 53.0716 |
| YIQ | 193.7040, 21.6850, 8.9890 |

Conversions

Conversions Part 2

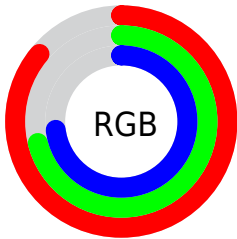
| Format | Color |
|-------------------------------------|-------------------------------|
| R _Y B | 220, 182, 185 |
| Decimal | 14464697 |
| CIE Lab | 77.38, 14.12, 3.61 |
| CIE LCh | 77, 14.576, 14.344 |
| Yxy | 52.1743, 0.3432, 0.3256 |
| Android (android.graphics.Color) | 4292654777 (0xFFDCB6B9) |
| YUV | 193.7040, -4.2911, 23.0616 |
| Hunter-Lab | 72.2318, 9.4975, 6.9995 |

Details

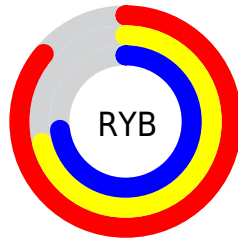
The Yxy color **52.1743, 0.3432, 0.3256** is a light color, and the websafe version is hex **FFCCCC**. A complement of this color would be **66.1296, 0.2886, 0.3325**, and the grayscale version is **53.7811, 0.3127, 0.3290**.

A 20% lighter version of the original color is **88.7599, 0.3222, 0.3261**, and **25.3658, 0.3522, 0.3245** is the 20% darker color. If you saturate the color by 10%, you get **43.0664, 0.3669, 0.3235**, and if you desaturate by 10%, it is **62.8242, 0.3241, 0.3276**.

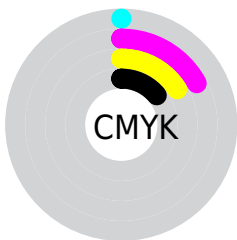
Distribution



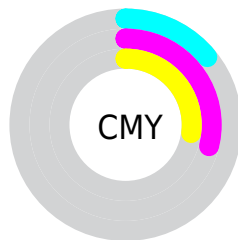
- Red (86%)
- Green (71%)
- Blue (73%)



- Red (86%)
- Yellow (71%)
- Blue (73%)



- Cyan (0%)
- Magenta (17%)
- Yellow (16%)
- Black (14%)




- Cyan (14%)
- Magenta (29%)
- Yellow (27%)

Brightness & Saturation Gradients


These gradients show how the Yxy color 52.1743, 0.3432, 0.3256 changes by changing the brightness by 10 percent. The first figure shows a shift by +10% for each color and the second figure -10%.


Similar to the brightness gradients but the following saturation gradients show a change of the Yxy color 52.1743, 0.3432, 0.3256 by changing the saturation by 10% instead.


 52.1743, 0.3432,
0.3256

 52.1743, 0.3432,
0.3256


395.1091, 0.3282,
0.3274

 37.1440, 0.3469,
0.3251


 93.3882, 0.3378,
0.3263

 25.3190, 0.3516,
0.3245


120.3407, 0.3357,
0.3265

 16.3149, 0.3578,
0.3236


152.0360, 0.3340,
0.3267

 9.7473, 0.3663,
0.3224

188.8586, 0.3325,
0.3269

 5.2317, 0.3789,
0.3204

231.1928, 0.3312,
0.3271

 2.3838, 0.3989,
0.3169

279.4230, 0.3301,

 0.8176, 0.4423,

0.3272

0.3133

333.9337, 0.3291,
0.3273

0.0000, 1.0000,
0.0000

0.0000, 0.0000,
0.0000

52.1743, 0.3432,
0.3256

52.1743, 0.3432,
0.3256

43.0664, 0.3669,
0.3235

62.8242, 0.3241,
0.3276

35.4224, 0.3963,
0.3214

75.0754, 0.3089,
0.3295

29.1681, 0.4318,
0.3196

88.9928, 0.2966,
0.3312

24.2198, 0.4733,
0.3183

93.9518, 0.2917,
0.3289

■ 20.4850, 0.5188,
0.3180

■ 17.8590, 0.5639,
0.3191

■ 16.2193, 0.6023,
0.3217

■ 15.4042, 0.6279,
0.3254

■ 15.2533, 0.6328,
0.3260

Harmonies

Analogous

The Analogous color harmony consists of three colors that are next to each other on the color wheel.



52.1743, 0.3267, 0.3102



52.1743, 0.3432, 0.3256



52.1743, 0.3513, 0.3423

Triad

The Triadic color harmony groups three colors that are evenly spaced from another and form a triangle on the color wheel.



52.1743, 0.3432, 0.3256



52.1743, 0.3176, 0.3609



52.1743, 0.2778, 0.3010

Complementary

The Complementary color scheme is a pair of colors which are on the opposite of each other on the color wheel.



52.1743, 0.3432, 0.3256



66.1296, 0.2886, 0.3325

Split Complementary

Split-complementary colors differ from the complementary color scheme. The scheme consists of three colors, the original color and two neighbors of the complement color.



52.1743, 0.2756, 0.3137



52.1743, 0.3432, 0.3256



52.1743, 0.2982, 0.3490

Square

The Square scheme is like the rectangle color scheme, but the four colors are evenly spaced on the color wheel.



52.1743, 0.3432, 0.3256



52.1743, 0.3362, 0.3634



52.1743, 0.2830, 0.3314



52.1743, 0.2891, 0.2961

Rectangle

The Rectangle color scheme consists of four colors that form a rectangle on the color wheel.



52.1743, 0.3432, 0.3256



52.1743, 0.3507, 0.3522



52.1743, 0.2830, 0.3314



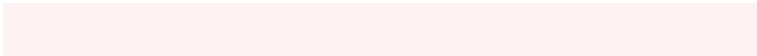
52.1743, 0.2760, 0.3045

Sweetspot

The Sweet Spot groups the original color and five complimentary colors.



52.1767, 0.3432, 0.3256



91.3996, 0.3205, 0.3281



53.3509, 0.3121, 0.2861



19.3145, 0.3216, 0.3279



0.0000, 0.0000, 0.0000



21.4041, 0.3127, 0.3290

Same Dimension

The Same Dimension uses a secret algorithm to generate beautiful new colors.



52.1767, 0.3432, 0.3256



67.6834, 0.3519, 0.3248



58.9011, 0.3427, 0.3473



13.0681, 0.3279, 0.3272



8.9607, 0.6310, 0.3250



0.5864, 0.6058, 0.3111

Inverse Universe

The Inverse Universe completely reimagines the original color for something new.



52.1767, 0.3432, 0.3256



67.6834, 0.3519, 0.3248



58.3740, 0.2859, 0.3099



13.0681, 0.3279, 0.3272



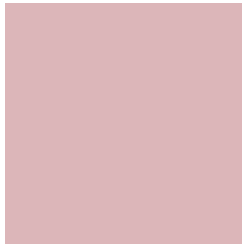
8.9607, 0.6310, 0.3250



0.5864, 0.6058, 0.3111

Previews

White Background



This preview shows how the Yxy color 52.1743, 0.3432, 0.3256 looks on a white background.

Color Contrast Check

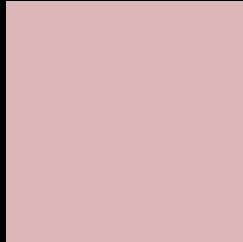
Large Text (above 18pt) WCAG AA × Fail

Any Text WCAG AA × Fail

Large Text (above 18pt) WCAG AAA × Fail

Any Text WCAG AAA × Fail

Black Background



This preview shows how the Yxy color 52.1743, 0.3432, 0.3256 looks on a black background.

Color Contrast Check

Large Text (above 18pt) WCAG AA ✓ Pass

Any Text WCAG AA ✓ Pass

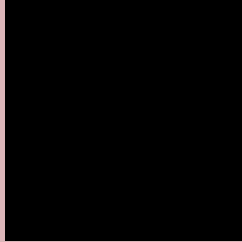
Large Text (above 18pt) WCAG AAA ✓ Pass

Any Text WCAG AAA ✓ Pass

If you want to check with other color combinations, try the [Color Contrast Checker](#).

Yxy 52.1743, 0.3432, 0.3256

Background



This preview shows how black text looks on a background with the Yxy color 52.1743, 0.3432, 0.3256.



This preview shows how white text looks on a background with the Yxy color 52.1743, 0.3432, 0.3256.

Color Blindness Simulation

Color vision deficiency is a very complex topic, and I could not describe the different causes any better than Wikipedia does, so if you want to learn more, you should check out their [article about color blindness](#).

Dichromacy



Original Color

52.1743, 0.3432, 0.3256

Protanopia

52.1467, 0.3168, 0.3290

Deuteranopia

52.1557, 0.3366, 0.3303



Tritanopia

52.3600, 0.3358, 0.3129

Trichromacy



Original Color

52.1743, 0.3432, 0.3256

Protanomaly

52.0089, 0.3262, 0.3278

Deuteranomaly

52.1887, 0.3393, 0.3291

Tritanomaly

52.1815, 0.3392, 0.3175

Monochromacy



Original Color

52.1743, 0.3432, 0.3256

Achromatopsia

53.9479, 0.3127, 0.3290

Achromatomaly

53.2850, 0.3227, 0.3278

CSS Examples

Text

The CSS property to change the color of the text to Yxy 52.1743, 0.3432, 0.3256 is called "color". The color property can be set on classes, ids or directly on the HTML element.

This example shows how text in the color `rgb(220, 182, 185)` looks like.

```
.text, #text, p{  
    color:rgb(220, 182, 185)  
}
```

If you want to add a text shadow in that color use the text-shadow property, you can generate a text shadow directly with our [CSS Text Shadow Generator](#).

Here you see how black text with a 4 pixel rgb(220, 182, 185) colored shadow looks like.

```
.shadow{ text-shadow: 4px 4px 2px rgb(220, 182, 185) }
```

Border

The CSS property to change the border of an element to Yxy 52.1743, 0.3432, 0.3256 is called "border". The border property can be set on classes, ids or directly on the HTML element.

This example shows the color as border, it can be applied via the CSS property "border" or "border-color".

```
.border, #border, table{ border:4px solid rgb(220, 182, 185) }
```

If only the border color should be changed use the property `border-color`.

```
.border{ border-color:rgb(220, 182, 185) }
```

If you want to add a box shadow in that color use:

Here you see how a box with a 4 pixel `rgb(220, 182, 185)` colored shadow looks like.

```
.boxshadow{ -moz-box-shadow:4px 4px 4px  
4px rgb(220, 182, 185); -webkit-box-  
shadow:4px 4px 4px 4px rgb(220, 182, 185);  
box-shadow:4px 4px 4px 4px rgb(220, 182,  
185) }
```


Background

The CSS property to change the background color of an element to Yxy 52.1743, 0.3432, 0.3256 is called "background". The background property can be set on classes, ids or directly on the HTML element.

```
.background, #background, body{  
background: rgb(220, 182, 185) }
```

If only the background color should be changed can be used:

```
.background{ background-color: rgb(220,  
182, 185) }
```

This example shows the color as background, it is applied via the CSS property "background".

To optimize and compress your CSS code, you can use our [online CSS compressor and optimizer](#) based on csstidy. If you want to create a linear or radial gradient as background or border, check our [CSS Gradient Generator](#).

Hey! You found this booklet interesting? Support Converting Colors with the new Membership Option!

The pro membership hides all ads, plus gives you double the colors in the color bucket, and more awesome pro features!

[Learn more, Memberships starting at \\$2.50/m!](#)

**Follow me
on Twitter!**

@ConvertingColor