

# Converting Colors

$Yxy(52.1679, 0.3384, 0.3291)$

Have a look what the booklet for  
Yxy(52.1679, 0.3384, 0.3291)  
contains.

<b>Yxy(52.0378, 0.3385, 0.3291)</b> .....	3
<b><i>Conversions</i></b> .....	4
<b><i>Details</i></b> .....	6
<b><i>Harmonies</i></b> .....	12
<b><i>Previews</i></b> .....	24
<b><i>Color Blindness Simulation</i></b> .....	27
<b><i>CSS Examples</i></b> .....	30

# Color

**Yxy(52.0378, 0.3385, 0.3291)**

# Conversions

## Conversions Part 1

Format	Color
Hex	D6B8B8
RGB	214, 184, 184
RGB Percent	84%, 72%, 72%
CMY	0.1607, 0.2784, 0.2785
CMYK	0.00, 0.14, 0.14, 0.16
HSL	0°, 27%, 78%
HSV	0°, 14%, 84%
XYZ	53.5241, 52.0378, 52.5596
YIQ	192.9700, 17.8800, 6.3600

# Conversions

## Conversions Part 2

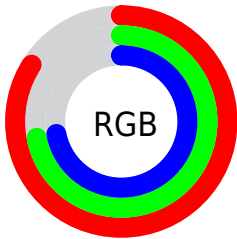
Format	Color
R <sub>Y</sub> B	214, 184, 184
Decimal	14071992
CIE Lab	77.30, 10.73, 3.98
CIE LCh	77, 11.440, 20.351
Yxy	52.0378, 0.3385, 0.3291
Android (android.graphics.Color)	4292262072 (0xFFD6B8B8)
YUV	192.9700, -4.4222, 18.4433
Hunter-Lab	72.1372, 6.2027, 7.2970

# Details

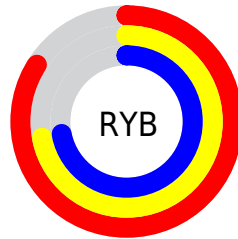
The Yxy color **52.0378, 0.3385, 0.3291** is a light color, and the websafe version is hex **FFCCCC**. A complement of this color would be **63.1305, 0.2915, 0.3289**, and the grayscale version is **53.3296, 0.3127, 0.3290**.

A 20% lighter version of the original color is **89.8714, 0.3226, 0.3290**, and **25.2422, 0.3456, 0.3291** is the 20% darker color. If you saturate the color by 10%, you get **42.9862, 0.3625, 0.3292**, and if you desaturate by 10%, it is **62.5728, 0.3193, 0.3290**.

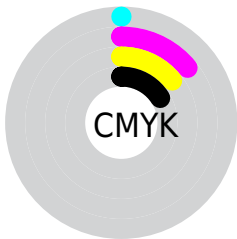
# Distribution



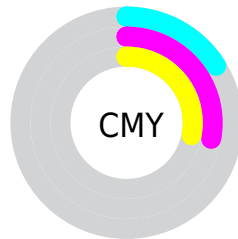
- Red (84%)
- Green (72%)
- Blue (72%)



- Red (84%)
- Yellow (72%)
- Blue (72%)



- Cyan (0%)
- Magenta (14%)
- Yellow (14%)
- Black (16%)




- Cyan (16%)
- Magenta (28%)
- Yellow (28%)

# Brightness & Saturation Gradients

These gradients show how the Yxy color 52.0378, 0.3385, 0.3291 changes by changing the brightness by 10 percent. The first figure shows a shift by +10% for each color and the second figure -10%.


Similar to the brightness gradients but the following saturation gradients show a change of the Yxy color 52.0378, 0.3385, 0.3291 by changing the saturation by 10% instead.





 52.0378, 0.3385,  
0.3291

 52.0378, 0.3385,  
0.3291


394.5825, 0.3258,  
0.3292

 37.0352, 0.3416,  
0.3291

 93.1870, 0.3339,  
0.3291

 25.2348, 0.3456,  
0.3290


120.1024, 0.3322,  
0.3292

 16.2520, 0.3509,  
0.3288

151.7575, 0.3307,  
0.3292

 9.7027, 0.3581,  
0.3286

188.5367, 0.3295,  
0.3292

 5.2023, 0.3688,  
0.3281

230.8244, 0.3284,  
0.3292

 2.3664, 0.3859,  
0.3270

279.0050, 0.3274,

 0.8085, 0.4255,

0.3292

0.3293

333.4629, 0.3265,  
0.3292

0.0000, 0.0000,  
0.0000

52.0378, 0.3385,  
0.3291

52.0378, 0.3385,  
0.3291

42.9862, 0.3625,  
0.3292

62.5728, 0.3193,  
0.3290

35.3449, 0.3924,  
0.3293

74.6462, 0.3040,  
0.3290

29.0450, 0.4288,  
0.3294

88.3188, 0.2917,  
0.3289

24.0091, 0.4718,  
0.3296

93.0377, 0.2883,  
0.3289

20.1520, 0.5192,  
0.3297

■ 17.3779, 0.5663,  
0.3299

■ 15.5760, 0.6060,  
0.3299

■ 14.6121, 0.6312,  
0.3300

■ 14.3012, 0.6400,  
0.3300

# Harmonies

## Analogous

The Analogous color harmony consists of three colors that are next to each other on the color wheel.



52.0378, 0.3267, 0.3164



52.0378, 0.3385, 0.3291



52.0378, 0.3432, 0.3421

# Triad

The Triadic color harmony groups three colors that are evenly spaced from another and form a triangle on the color wheel.



52.0378, 0.3385, 0.3291



52.0378, 0.3135, 0.3525



52.0378, 0.2864, 0.3057

# Complementary

The Complementary color scheme is a pair of colors which are on the opposite of each other on the color wheel.



52.0378, 0.3385, 0.3291



63.1305, 0.2915, 0.3289

# Split Complementary

Split-complementary colors differ from the complementary color scheme. The scheme consists of three colors, the original color and two neighbors of the complement color.



52.0378, 0.2831, 0.3147



52.0378, 0.3385, 0.3291



52.0378, 0.2986, 0.3421

# Square

The Square scheme is like the rectangle color scheme, but the four colors are evenly spaced on the color wheel.



52.0378, 0.3385, 0.3291



52.0378, 0.3286, 0.3562



52.0378, 0.2875, 0.3281



52.0378, 0.2966, 0.3030



# Rectangle

The Rectangle color scheme consists of four colors that form a rectangle on the color wheel.



52.0378, 0.3385, 0.3291



52.0378, 0.3417, 0.3494



52.0378, 0.2875, 0.3281



52.0378, 0.2845, 0.3081

# Sweetspot

The Sweet Spot groups the original color and five complimentary colors.



52.0401, 0.3385, 0.3291



93.0289, 0.3193, 0.3290



53.4264, 0.3143, 0.2946



19.6404, 0.3206, 0.3290



0.0000, 0.0000, 0.0000



21.4041, 0.3127, 0.3290



# Same Dimension

The Same Dimension uses a secret algorithm to generate beautiful new colors.



52.0401, 0.3385, 0.3291



72.9242, 0.3455, 0.3291



58.6025, 0.3360, 0.3466



12.4223, 0.3291, 0.3291



8.6439, 0.6400, 0.3300



0.5219, 0.6398, 0.3302



# Inverse Universe

The Inverse Universe completely reimagines the original color for something new.



63.1305, 0.2915, 0.3289



92.6643, 0.2870, 0.3289



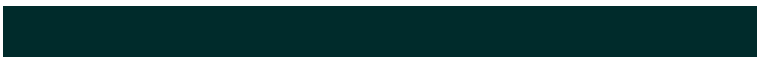
55.8885, 0.2909, 0.3107



14.1062, 0.2983, 0.3289



31.9553, 0.2246, 0.3285

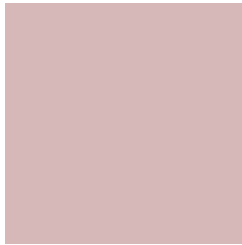


1.9279, 0.2246, 0.3286



# Previews

## White Background



This preview shows how the Yxy color 52.0378, 0.3385, 0.3291 looks on a white background.

## Color Contrast Check

Large Text (above 18pt) WCAG AA × Fail

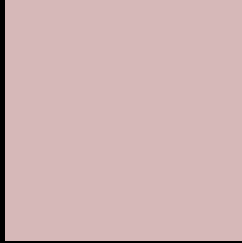
Any Text WCAG AA × Fail

Large Text (above 18pt) WCAG AAA × Fail

Any Text WCAG AAA × Fail



# Black Background



This preview shows how the Yxy color 52.0378, 0.3385, 0.3291 looks on a black background.

## Color Contrast Check

Large Text (above 18pt) WCAG AA ✓ Pass

Any Text WCAG AA ✓ Pass

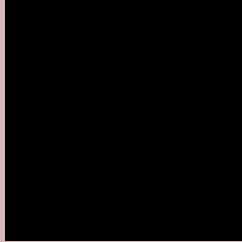
Large Text (above 18pt) WCAG AAA ✓ Pass

Any Text WCAG AAA ✓ Pass

If you want to check with other color combinations, try the [Color Contrast Checker](#).

**Yxy 52.0378, 0.3385, 0.3291**

## Background



This preview shows how black text looks on a background with the Yxy color 52.0378, 0.3385, 0.3291.



This preview shows how white text looks on a background with the Yxy color 52.0378, 0.3385, 0.3291.

# Color Blindness Simulation

Color vision deficiency is a very complex topic, and I could not describe the different causes any better than Wikipedia does, so if you want to learn more, you should check out their [article about color blindness](#).

## Dichromacy



### Original Color

52.0378, 0.3385, 0.3291

### Protanopia

52.0169, 0.3191, 0.3327

### Deuteranopia

52.1557, 0.3366, 0.3303



## Tritanopia

52.0403, 0.3306, 0.3127

# Trichromacy



## Original Color

52.0378, 0.3385, 0.3291

## Protanomaly

52.0682, 0.3260, 0.3315

## Deuteranomaly

52.3047, 0.3374, 0.3303

## Tritanomaly

52.1198, 0.3329, 0.3185

# Monochromacy



## Original Color

52.0378, 0.3385, 0.3291

## Achromatopsia

53.3276, 0.3127, 0.3290

## Achromatomaly

52.9621, 0.3218, 0.3290

# CSS Examples

## Text

The CSS property to change the color of the text to Yxy 52.0378, 0.3385, 0.3291 is called "color". The color property can be set on classes, ids or directly on the HTML element.

This example shows how text in the color `rgb(214, 184, 184)` looks like.

```
.text, #text, p{  
    color:rgb(214, 184, 184)  
}
```

If you want to add a text shadow in that color use the text-shadow property, you can generate a text shadow directly with our [CSS Text Shadow Generator](#).

Here you see how black text with a 4 pixel rgb(214, 184, 184) colored shadow looks like.

```
.shadow{ text-shadow: 4px 4px 2px rgb(214, 184, 184) }
```

## Border

The CSS property to change the border of an element to Yxy 52.0378, 0.3385, 0.3291 is called "border". The border property can be set on classes, ids or directly on the HTML element.

This example shows the color as border, it can be applied via the CSS property "border" or "border-color".

```
.border, #border, table{ border:4px solid rgb(214, 184, 184) }
```

If only the border color should be changed use the property `border-color`.

```
.border{ border-color:rgb(214, 184, 184) }
```

If you want to add a box shadow in that color use:

Here you see how a box with a 4 pixel `rgb(214, 184, 184)` colored shadow looks like.

```
.boxshadow{ -moz-box-shadow:4px 4px 4px  
4px rgb(214, 184, 184); -webkit-box-  
shadow:4px 4px 4px 4px rgb(214, 184, 184);  
box-shadow:4px 4px 4px 4px rgb(214, 184,  
184) }
```



# Background

The CSS property to change the background color of an element to Yxy 52.0378, 0.3385, 0.3291 is called "background". The background property can be set on classes, ids or directly on the HTML element.

```
.background, #background, body{  
background: rgb(214, 184, 184) }
```

If only the background color should be changed can be used:

```
.background{ background-color: rgb(214,  
184, 184) }
```

This example shows the color as background, it is applied via the CSS property "background".

To optimize and compress your CSS code, you can use our [online CSS compressor and optimizer](#) based on csstidy. If you want to create a linear or radial gradient as background or border, check our [CSS Gradient Generator](#).

Hey! You found this booklet interesting? Support Converting Colors with the new Membership Option!

The pro membership hides all ads, plus gives you double the colors in the color bucket, and more awesome pro features!

**[Learn more, Memberships starting at \\$2.50/m!](#)**

**Follow me  
on Twitter!**

@ConvertingColor