

# Converting Colors

$Y_{xy}(52.2252, 0.4204, 0.3634)$

Have a look what the booklet for  
Yxy(52.2252, 0.4204, 0.3634)  
contains.

<b>Yxy(52.2208, 0.4207, 0.3638)</b> .....	3
<b>Conversions</b> .....	4
<b>Details</b> .....	6
<b>Harmonies</b> .....	12
<b>Previews</b> .....	24
<b>Color Blindness Simulation</b> .....	27
<b>CSS Examples</b> .....	30

# Color

**Yxy(52.2208, 0.4207, 0.3638)**

# Conversions

## Conversions Part 1

Format	Color
Hex	FFAB8A
RGB	255, 171, 138
RGB Percent	100%, 67%, 54%
CMY	0.0000, 0.3294, 0.4589
CMYK	0.00, 0.33, 0.46, 0.00
HSL	17°, 100%, 77%
HSV	17°, 46%, 100%
XYZ	60.3884, 52.2208, 30.9334
YIQ	192.3540, 60.6570, 7.5450

# Conversions

## Conversions Part 2

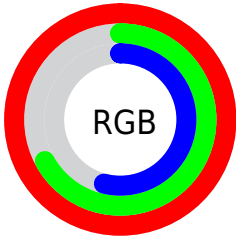
Format	Color
R <sub>Y</sub> B	255, 184, 138
Decimal	16755594
CIE Lab	77.41, 27.20, 29.58
CIE LCh	77, 40.184, 47.398
Yxy	52.2208, 0.4207, 0.3638
Android (android.graphics.Color)	4294945674 (0xFFFFAB8A)
YUV	192.3540, -26.7965, 54.9405
Hunter-Lab	72.2640, 22.7041, 25.2050

# Details

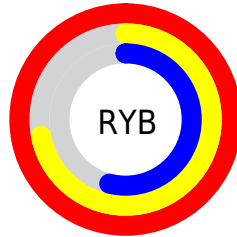
The Yxy color **52.2208, 0.4207, 0.3638** is a light color, and the websafe version is hex **FF9966**. A complement of this color would be **64.8466, 0.2442, 0.2898**, and the grayscale version is **53.0639, 0.3127, 0.3290**.

A 20% lighter version of the original color is **80.0039, 0.3565, 0.3646**, and **25.2635, 0.4489, 0.3688** is the 20% darker color. If you saturate the color by 10%, you get **45.1269, 0.4555, 0.3702**, and if you desaturate by 10%, it is **60.4505, 0.3899, 0.3563**.

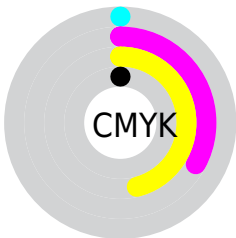
# Distribution



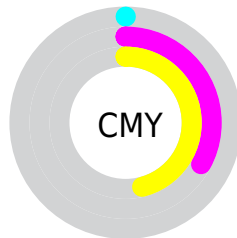
- Red (100%)
- Green (67%)
- Blue (54%)



- Red (100%)
- Yellow (72%)
- Blue (54%)



- Cyan (0%)
- Magenta (33%)
- Yellow (46%)
- Black (0%)




- Cyan (0%)
- Magenta (33%)
- Yellow (46%)


# Brightness & Saturation Gradients

These gradients show how the Yxy color 52.2208, 0.4207, 0.3638 changes by changing the brightness by 10 percent. The first figure shows a shift by +10% for each color and the second figure -10%.


Similar to the brightness gradients but the following saturation gradients show a change of the Yxy color 52.2208, 0.4207, 0.3638 by changing the saturation by 10% instead.





 52.2208, 0.4207,  
0.3638


 52.2208, 0.4207,  
0.3638


395.2884, 0.3674,  
0.3493


 37.1811, 0.4335,  
0.3665


 93.4568, 0.4017,  
0.3592

 25.3477, 0.4496,  
0.3694


 120.4219, 0.3944,  
0.3573

 16.3363, 0.4704,  
0.3723


 152.1309, 0.3882,  
0.3556

 9.7625, 0.4978,  
0.3746

188.9682, 0.3829,  
0.3540

 5.2417, 0.5351,  
0.3747

231.3182, 0.3783,  
0.3527

 2.3898, 0.6119,  
0.3831

279.5653, 0.3742,

 0.8206, 0.6608,

0.3514

0.3392

334.0939, 0.3706,  
0.3503

0.0000, 1.0000,  
0.0000

0.0000, 0.0000,  
0.0000

52.2208, 0.4207,  
0.3638

52.2208, 0.4207,  
0.3638

45.1269, 0.4555,  
0.3702

60.4505, 0.3899,  
0.3563

39.1098, 0.4932,  
0.3743

69.8564, 0.3635,  
0.3484

34.1163, 0.5314,  
0.3750

80.4860, 0.3411,  
0.3406

30.0850, 0.5664,  
0.3712

92.3821, 0.3223,  
0.3331

■ 26.9467, 0.5943,  
0.3629

99.9994, 0.3127,  
0.3290

■ 25.8911, 0.6037,  
0.3589

# Harmonies

## Analogous

The Analogous color harmony consists of three colors that are next to each other on the color wheel.



52.2208, 0.4013, 0.3214



52.2208, 0.4207, 0.3638



52.2208, 0.4080, 0.4024

# Triad

The Triadic color harmony groups three colors that are evenly spaced from another and form a triangle on the color wheel.



52.2208, 0.4207, 0.3638



52.2208, 0.2668, 0.3818



52.2208, 0.2529, 0.2436

# Complementary

The Complementary color scheme is a pair of colors which are on the opposite of each other on the color wheel.



52.2208, 0.4207, 0.3638



64.8466, 0.2442, 0.2898

# Split Complementary

Split-complementary colors differ from the complementary color scheme. The scheme consists of three colors, the original color and two neighbors of the complement color.



52.2208, 0.2234, 0.2510



52.2208, 0.4207, 0.3638



52.2208, 0.2304, 0.3273

# Square

The Square scheme is like the rectangle color scheme, but the four colors are evenly spaced on the color wheel.



52.2208, 0.4207, 0.3638



52.2208, 0.3175, 0.4200



52.2208, 0.2155, 0.2796



52.2208, 0.3003, 0.2555



# Rectangle

The Rectangle color scheme consists of four colors that form a rectangle on the color wheel.



52.2208, 0.4207, 0.3638



52.2208, 0.3844, 0.4205



52.2208, 0.2155, 0.2796



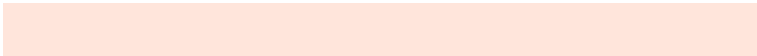
52.2208, 0.2408, 0.2438

# Sweetspot

The Sweet Spot groups the original color and five complimentary colors.



52.2234, 0.4207, 0.3638



82.6377, 0.3373, 0.3391



44.8012, 0.3461, 0.2432



17.1633, 0.3417, 0.3408



0.0000, 0.0000, 0.0000



21.4041, 0.3127, 0.3290



# Same Dimension

The Same Dimension uses a secret algorithm to generate beautiful new colors.



52.2234, 0.4207, 0.3638



45.7149, 0.4523, 0.3697



78.4119, 0.3926, 0.4189



18.8218, 0.3287, 0.3358



13.7456, 0.6008, 0.3611



1.5141, 0.5788, 0.3786



# Inverse Universe

The Inverse Universe completely reimagines the original color for something new.



64.8466, 0.2442, 0.2898



59.6591, 0.2327, 0.2805



39.6342, 0.2313, 0.2181



19.5638, 0.2980, 0.3221



21.7399, 0.1984, 0.2342



2.3023, 0.2018, 0.2463



# Previews

## White Background



This preview shows how the Yxy color 52.2208, 0.4207, 0.3638 looks on a white background.

## Color Contrast Check

Large Text (above 18pt) WCAG AA × Fail

Any Text WCAG AA × Fail

Large Text (above 18pt) WCAG AAA × Fail

Any Text WCAG AAA × Fail



# Black Background



This preview shows how the Yxy color 52.2208, 0.4207, 0.3638 looks on a black background.

## Color Contrast Check

Large Text (above 18pt) WCAG AA ✓ Pass

Any Text WCAG AA ✓ Pass

Large Text (above 18pt) WCAG AAA ✓ Pass

Any Text WCAG AAA ✓ Pass

If you want to check with other color combinations, try the [Color Contrast Checker](#).

**Yxy 52.2208, 0.4207, 0.3638**

## Background



This preview shows how black text looks on a background with the Yxy color 52.2208, 0.4207, 0.3638.



This preview shows how white text looks on a background with the Yxy color 52.2208, 0.4207, 0.3638.

# Color Blindness Simulation

Color vision deficiency is a very complex topic, and I could not describe the different causes any better than Wikipedia does, so if you want to learn more, you should check out their [article about color blindness](#).

## Dichromacy



### Original Color

52.2208, 0.4207, 0.3638

### Protanopia

52.3473, 0.3594, 0.3834

### Deuteranopia

52.1385, 0.3923, 0.3832



## Tritanopia

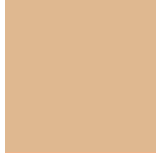
52.1521, 0.3836, 0.3166

# Trichromacy



## Original Color

52.2208, 0.4207, 0.3638



## Protanomaly

51.9826, 0.3806, 0.3760



## Deuteranomaly

52.2235, 0.4024, 0.3759



## Tritanomaly

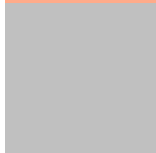
51.9456, 0.3977, 0.3335

# Monochromacy



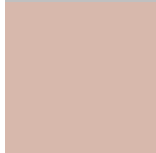
## Original Color

52.2208, 0.4207, 0.3638



## Achromatopsia

52.7115, 0.3127, 0.3290



## Achromatomaly

51.7066, 0.3494, 0.3434

# CSS Examples

## Text

The CSS property to change the color of the text to Yxy 52.2208, 0.4207, 0.3638 is called "color". The color property can be set on classes, ids or directly on the HTML element.

This example shows how text in the color `rgb(255, 171, 138)` looks like.

```
.text, #text, p{  
    color:rgb(255, 171, 138)  
}
```

If you want to add a text shadow in that color use the text-shadow property, you can generate a text shadow directly with our [CSS Text Shadow Generator](#).

Here you see how black text with a 4 pixel rgb(255, 171, 138) colored shadow looks like.

```
.shadow{ text-shadow: 4px 4px 2px rgb(255, 171, 138) }
```

## Border

The CSS property to change the border of an element to Yxy 52.2208, 0.4207, 0.3638 is called "border". The border property can be set on classes, ids or directly on the HTML element.

This example shows the color as border, it can be applied via the CSS property "border" or "border-color".

```
.border, #border, table{ border:4px solid rgb(255, 171, 138) }
```

If only the border color should be changed use the property `border-color`.

```
.border{ border-color:rgb(255, 171, 138) }
```

If you want to add a box shadow in that color use:

Here you see how a box with a 4 pixel `rgb(255, 171, 138)` colored shadow looks like.

```
.boxshadow{ -moz-box-shadow:4px 4px 4px  
4px rgb(255, 171, 138); -webkit-box-  
shadow:4px 4px 4px 4px rgb(255, 171, 138);  
box-shadow:4px 4px 4px 4px rgb(255, 171,  
138) }
```



# Background

The CSS property to change the background color of an element to Yxy 52.2208, 0.4207, 0.3638 is called "background". The background property can be set on classes, ids or directly on the HTML element.

```
.background, #background, body{  
background: rgb(255, 171, 138) }
```

If only the background color should be changed can be used:

```
.background{ background-color: rgb(255,  
171, 138) }
```

This example shows the color as background, it is applied via the CSS property "background".

To optimize and compress your CSS code, you can use our [online CSS compressor and optimizer](#) based on csstidy. If you want to create a linear or radial gradient as background or border, check our [CSS Gradient Generator](#).

Hey! You found this booklet interesting? Support Converting Colors with the new Membership Option!

The pro membership hides all ads, plus gives you double the colors in the color bucket, and more awesome pro features!

**[Learn more, Memberships starting at \\$2.50/m!](#)**

**Follow me  
on Twitter!**

@ConvertingColor