

Converting Colors

$Y_{xy}(52.3002, 0.3686, 0.3670)$

Have a look what the booklet for
Yxy(52.3002, 0.3686, 0.3670)
contains.

Yxy(52.0579, 0.3689, 0.3671)	3
Conversions	4
Details	6
Harmonies	12
Previews	24
Color Blindness Simulation	27
CSS Examples	30

Color

Yxy(52.0579, 0.3689, 0.3671)

Conversions

Conversions Part 1

Format	Color
Hex	DBB999
RGB	219, 185, 153
RGB Percent	86%, 73%, 60%
CMY	0.1412, 0.2745, 0.3999
CMYK	0.00, 0.16, 0.30, 0.14
HSL	29°, 48%, 73%
HSV	29°, 30%, 86%
XYZ	52.3132, 52.0579, 37.4374
YIQ	191.5180, 30.5360, -2.7440

Conversions

Conversions Part 2

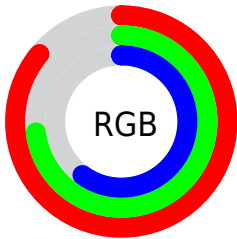
Format	Color
R _Y B	219, 215, 153
Decimal	14399897
CIE Lab	77.32, 7.54, 20.78
CIE LCh	77, 22.100, 70.062
Yxy	52.0579, 0.3689, 0.3671
Android (android.graphics.Color)	4292589977 (0xFFDDBB999)
YUV	191.5180, -18.9894, 24.1017
Hunter-Lab	72.1512, 3.1568, 19.7417

Details

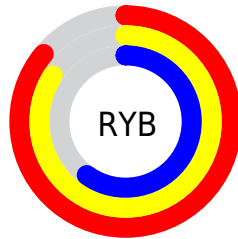
The Yxy color **52.0579, 0.3689, 0.3671** is a light color, and the websafe version is hex **FFCC99**. A complement of this color would be **47.4369, 0.2648, 0.2875**, and the grayscale version is **52.5181, 0.3127, 0.3290**.

A 20% lighter version of the original color is **88.6756, 0.3436, 0.3629**, and **25.2484, 0.3839, 0.3763** is the 20% darker color. If you saturate the color by 10%, you get **46.8661, 0.3926, 0.3802**, and if you desaturate by 10%, it is **57.7621, 0.3478, 0.3540**.

Distribution



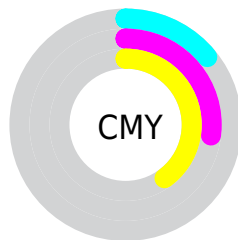
- Red (86%)
- Green (73%)
- Blue (60%)



- Red (86%)
- Yellow (84%)
- Blue (60%)



- Cyan (0%)
- Magenta (16%)
- Yellow (30%)
- Black (14%)




- Cyan (14%)
- Magenta (27%)
- Yellow (40%)

Brightness & Saturation Gradients


These gradients show how the Yxy color 52.0579, 0.3689, 0.3671 changes by changing the brightness by 10 percent. The first figure shows a shift by +10% for each color and the second figure -10%.


Similar to the brightness gradients but the following saturation gradients show a change of the Yxy color 52.0579, 0.3689, 0.3671 by changing the saturation by 10% instead.


 52.0579, 0.3689,
0.3671


 52.0579, 0.3689,
0.3671


394.6601, 0.3412,
0.3489

 37.0512, 0.3756,
0.3713


 93.2166, 0.3590,
0.3607

 25.2472, 0.3842,
0.3766


 120.1375, 0.3552,
0.3583

 16.2613, 0.3953,
0.3832


151.7985, 0.3520,
0.3561

 9.7092, 0.4103,
0.3919

188.5841, 0.3492,
0.3543

 5.2066, 0.4316,
0.4033

230.8786, 0.3469,
0.3527

 2.3690, 0.4664,
0.4209

279.0666, 0.3447,

 0.8099, 0.5421,

0.3513

0.4579

333.5323, 0.3429,
0.3501

0.0000, 0.0000,
0.0000

52.0579, 0.3689,
0.3671

52.0579, 0.3689,
0.3671

46.8661, 0.3926,
0.3802

57.7621, 0.3478,
0.3540

42.1635, 0.4187,
0.3924

63.9864, 0.3291,
0.3412

37.9356, 0.4464,
0.4029

70.7478, 0.3129,
0.3291

34.1642, 0.4748,
0.4102

78.0599, 0.2988,
0.3179

30.8294, 0.5021,
0.4133

85.4419, 0.2907,
0.3150

■ 27.9091, 0.5265,
0.4110

■ 92.3463, 0.2911,
0.3266

■ 25.4006, 0.5469,
0.4040

■ 93.7998, 0.2911,
0.3289

Harmonies

Analogous

The Analogous color harmony consists of three colors that are next to each other on the color wheel.



52.0579, 0.3708, 0.3448



52.0579, 0.3689, 0.3671



52.0579, 0.3514, 0.3806

Triad

The Triadic color harmony groups three colors that are evenly spaced from another and form a triangle on the color wheel.



52.0579, 0.3689, 0.3671



52.0579, 0.2705, 0.3363



52.0579, 0.2993, 0.2837

Complementary

The Complementary color scheme is a pair of colors which are on the opposite of each other on the color wheel.



52.0579, 0.3689, 0.3671



47.4369, 0.2648, 0.2875

Split Complementary

Split-complementary colors differ from the complementary color scheme. The scheme consists of three colors, the original color and two neighbors of the complement color.



52.0579, 0.2739, 0.2800



52.0579, 0.3689, 0.3671



52.0579, 0.2579, 0.3087

Square

The Square scheme is like the rectangle color scheme, but the four colors are evenly spaced on the color wheel.



52.0579, 0.3689, 0.3671



52.0579, 0.2944, 0.3632



52.0579, 0.2591, 0.2886



52.0579, 0.3295, 0.2981

Rectangle

The Rectangle color scheme consists of four colors that form a rectangle on the color wheel.



52.0579, 0.3689, 0.3671



52.0579, 0.3338, 0.3818



52.0579, 0.2591, 0.2886



52.0579, 0.2899, 0.2812

Sweetspot

The Sweet Spot groups the original color and five complimentary colors.



52.0603, 0.3689, 0.3671



91.2950, 0.3273, 0.3399



41.4425, 0.3456, 0.2888



19.2523, 0.3299, 0.3417



0.0000, 0.0000, 0.0000



21.4041, 0.3127, 0.3290

Same Dimension

The Same Dimension uses a secret algorithm to generate beautiful new colors.



52.0603, 0.3689, 0.3671



68.8770, 0.3833, 0.3752



67.4507, 0.3583, 0.4028



14.0881, 0.3279, 0.3404



15.2791, 0.5445, 0.4059



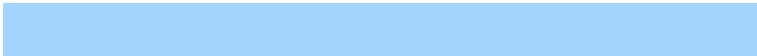
1.1619, 0.5188, 0.4263

Inverse Universe

The Inverse Universe completely reimagines the original color for something new.



47.4369, 0.2648, 0.2875



61.3682, 0.2548, 0.2774



35.0408, 0.2598, 0.2428



13.7213, 0.2982, 0.3174



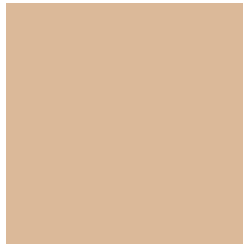
10.2349, 0.1788, 0.1636



0.8354, 0.1868, 0.1925

Previews

White Background



This preview shows how the Yxy color 52.0579, 0.3689, 0.3671 looks on a white background.

Color Contrast Check

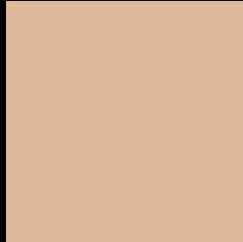
Large Text (above 18pt) WCAG AA × Fail

Any Text WCAG AA × Fail

Large Text (above 18pt) WCAG AAA × Fail

Any Text WCAG AAA × Fail

Black Background



This preview shows how the Yxy color 52.0579, 0.3689, 0.3671 looks on a black background.

Color Contrast Check

Large Text (above 18pt) WCAG AA ✓ Pass

Any Text WCAG AA ✓ Pass

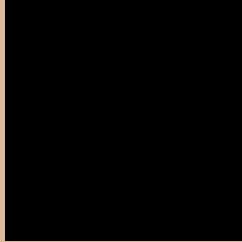
Large Text (above 18pt) WCAG AAA ✓ Pass

Any Text WCAG AAA ✓ Pass

If you want to check with other color combinations, try the [Color Contrast Checker](#).

Yxy 52.0579, 0.3689, 0.3671

Background



This preview shows how black text looks on a background with the Yxy color 52.0579, 0.3689, 0.3671.



This preview shows how white text looks on a background with the Yxy color 52.0579, 0.3689, 0.3671.

Color Blindness Simulation

Color vision deficiency is a very complex topic, and I could not describe the different causes any better than Wikipedia does, so if you want to learn more, you should check out their [article about color blindness](#).

Dichromacy



Original Color

52.0579, 0.3689, 0.3671

Protanopia

52.2185, 0.3495, 0.3726

Deuteranopia

52.2689, 0.3729, 0.3655



Tritanopia

51.9377, 0.3404, 0.3130

Trichromacy



Original Color

52.0579, 0.3689, 0.3671

Protanomaly

52.1716, 0.3562, 0.3707

Deuteranomaly

52.1105, 0.3720, 0.3656

Tritanomaly

51.7917, 0.3512, 0.3326

Monochromacy



Original Color

52.0579, 0.3689, 0.3671

Achromatopsia

52.7115, 0.3127, 0.3290

Achromatomaly

52.1661, 0.3322, 0.3426

CSS Examples

Text

The CSS property to change the color of the text to Yxy 52.0579, 0.3689, 0.3671 is called "color". The color property can be set on classes, ids or directly on the HTML element.

This example shows how text in the color `rgb(219, 185, 153)` looks like.

```
.text, #text, p{  
    color:rgb(219, 185, 153)  
}
```

If you want to add a text shadow in that color use the text-shadow property, you can generate a text shadow directly with our [CSS Text Shadow Generator](#).

Here you see how black text with a 4 pixel rgb(219, 185, 153) colored shadow looks like.

```
.shadow{ text-shadow: 4px 4px 2px rgb(219, 185, 153) }
```

Border

The CSS property to change the border of an element to Yxy 52.0579, 0.3689, 0.3671 is called "border". The border property can be set on classes, ids or directly on the HTML element.

This example shows the color as border, it can be applied via the CSS property "border" or "border-color".

```
.border, #border, table{ border:4px solid rgb(219, 185, 153) }
```

If only the border color should be changed use the property `border-color`.

```
.border{ border-color:rgb(219, 185, 153) }
```

If you want to add a box shadow in that color use:

Here you see how a box with a 4 pixel `rgb(219, 185, 153)` colored shadow looks like.

```
.boxshadow{ -moz-box-shadow:4px 4px 4px  
4px rgb(219, 185, 153); -webkit-box-  
shadow:4px 4px 4px 4px rgb(219, 185, 153);  
box-shadow:4px 4px 4px 4px rgb(219, 185,  
153) }
```


Background

The CSS property to change the background color of an element to Yxy 52.0579, 0.3689, 0.3671 is called "background". The background property can be set on classes, ids or directly on the HTML element.

```
.background, #background, body{  
background: rgb(219, 185, 153) }
```

If only the background color should be changed can be used:

```
.background{ background-color: rgb(219,  
185, 153) }
```

This example shows the color as background, it is applied via the CSS property "background".

To optimize and compress your CSS code, you can use our [online CSS compressor and optimizer](#) based on csstidy. If you want to create a linear or radial gradient as background or border, check our [CSS Gradient Generator](#).

Hey! You found this booklet interesting? Support Converting Colors with the new Membership Option!

The pro membership hides all ads, plus gives you double the colors in the color bucket, and more awesome pro features!

[Learn more, Memberships starting at \\$2.50/m!](#)

**Follow me
on Twitter!**

@ConvertingColor