

Converting Colors

Yxy(52.3779, 0.3473, 0.3326)

Have a look what the booklet for
Yxy(52.3779, 0.3473, 0.3326)
contains.

Yxy(52.3779, 0.3473, 0.3326)	3
Conversions	4
Details	6
Harmonies	12
Previews	24
Color Blindness Simulation	27
CSS Examples	30

Color

Yxy(52.3779, 0.3473, 0.3326)

Conversions

Conversions Part 1

Format	Color
Hex	DCB7B4
RGB	220, 183, 180
RGB Percent	86%, 72%, 71%
CMY	0.1372, 0.2824, 0.2941
CMYK	0.00, 0.17, 0.18, 0.14
HSL	4°, 36%, 78%
HSV	4°, 18%, 86%
XYZ	54.6929, 52.3779, 50.4094
YIQ	193.7210, 23.0150, 6.9110

Conversions

Conversions Part 2

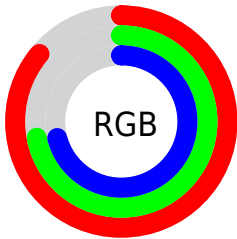
Format	Color
R _Y B	220, 183, 180
Decimal	14464948
CIE Lab	77.51, 12.84, 6.50
CIE LCh	78, 14.386, 26.850
Yxy	52.3779, 0.3473, 0.3326
Android (android.graphics.Color)	4292655028 (0xFFDCB7B4)
YUV	193.7210, -6.7645, 23.0467
Hunter-Lab	72.3726, 8.2427, 9.3638

Details

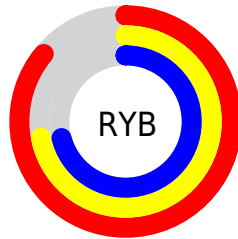
The Yxy color **52.3779, 0.3473, 0.3326** is a light color, and the websafe version is hex **FFCCCC**. A complement of this color would be **64.5166, 0.2853, 0.3254**, and the grayscale version is **53.8084, 0.3127, 0.3290**.

A 20% lighter version of the original color is **89.0491, 0.3253, 0.3320**, and **25.3901, 0.3566, 0.3338** is the 20% darker color. If you saturate the color by 10%, you get **43.7540, 0.3728, 0.3347**, and if you desaturate by 10%, it is **62.3636, 0.3266, 0.3306**.

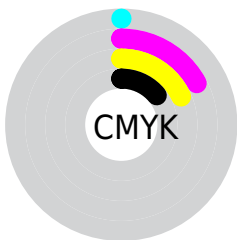
Distribution



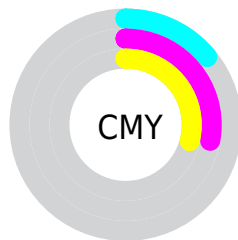
- Red (86%)
- Green (72%)
- Blue (71%)



- Red (86%)
- Yellow (72%)
- Blue (71%)



- Cyan (0%)
- Magenta (17%)
- Yellow (18%)
- Black (14%)




- Cyan (14%)
- Magenta (28%)
- Yellow (29%)

Brightness & Saturation Gradients

These gradients show how the Yxy color 52.3779, 0.3473, 0.3326 changes by changing the brightness by 10 percent. The first figure shows a shift by +10% for each color and the second figure -10%.


Similar to the brightness gradients but the following saturation gradients show a change of the Yxy color 52.3779, 0.3473, 0.3326 by changing the saturation by 10% instead.


 52.3779, 0.3473,
0.3326

 52.3779, 0.3473,
0.3326


395.8938, 0.3302,
0.3311

 37.3064, 0.3515,
0.3329


 93.6883, 0.3411,
0.3321

 25.4448, 0.3568,
0.3333


120.6960, 0.3388,
0.3319

 16.4088, 0.3639,
0.3337


152.4512, 0.3368,
0.3317

 9.8139, 0.3736,
0.3341

189.3383, 0.3352,
0.3315

 5.2757, 0.3879,
0.3346

231.7418, 0.3337,
0.3314

 2.4099, 0.4106,
0.3346

280.0459, 0.3324,

 0.8310, 0.4688,

0.3313

0.3444

334.6351, 0.3312,
0.3312

0.0000, 1.0000,
0.0000

0.0000, 0.0000,
0.0000

52.3779, 0.3473,
0.3326

52.3779, 0.3473,
0.3326

43.7540, 0.3728,
0.3347

62.3636, 0.3266,
0.3306

36.4262, 0.4040,
0.3369

73.7590, 0.3099,
0.3287

30.3339, 0.4413,
0.3388

86.6185, 0.2964,
0.3269

25.4090, 0.4841,
0.3402

93.9597, 0.2917,
0.3289

■ 21.5768, 0.5302,
0.3406

■ 18.7538, 0.5744,
0.3397

■ 16.8447, 0.6103,
0.3372

■ 15.7332, 0.6325,
0.3340

■ 15.6034, 0.6354,
0.3337

Harmonies

Analogous

The Analogous color harmony consists of three colors that are next to each other on the color wheel.



52.3779, 0.3340, 0.3164



52.3779, 0.3473, 0.3326



52.3779, 0.3510, 0.3485

Triad

The Triadic color harmony groups three colors that are evenly spaced from another and form a triangle on the color wheel.



52.3779, 0.3473, 0.3326



52.3779, 0.3094, 0.3565



52.3779, 0.2819, 0.2984

Complementary

The Complementary color scheme is a pair of colors which are on the opposite of each other on the color wheel.



52.3779, 0.3473, 0.3326



64.5166, 0.2853, 0.3254

Split Complementary

Split-complementary colors differ from the complementary color scheme. The scheme consists of three colors, the original color and two neighbors of the complement color.



52.3779, 0.2759, 0.3079



52.3779, 0.3473, 0.3326



52.3779, 0.2914, 0.3418

Square

The Square scheme is like the rectangle color scheme, but the four colors are evenly spaced on the color wheel.



52.3779, 0.3473, 0.3326



52.3779, 0.3287, 0.3631



52.3779, 0.2793, 0.3238



52.3779, 0.2961, 0.2970

Rectangle

The Rectangle color scheme consists of four colors that form a rectangle on the color wheel.



52.3779, 0.3473, 0.3326



52.3779, 0.3474, 0.3568



52.3779, 0.2793, 0.3238



52.3779, 0.2789, 0.3007

Sweetspot

The Sweet Spot groups the original color and five complimentary colors.



52.3803, 0.3473, 0.3326



91.9084, 0.3210, 0.3299



52.8927, 0.3169, 0.2869



19.4375, 0.3222, 0.3301



0.0000, 0.0000, 0.0000



21.4041, 0.3127, 0.3290

Same Dimension

The Same Dimension uses a secret algorithm to generate beautiful new colors.



52.3803, 0.3473, 0.3326



68.1341, 0.3568, 0.3335



61.0777, 0.3433, 0.3551



13.2070, 0.3290, 0.3308



9.2166, 0.6342, 0.3347



0.6530, 0.6176, 0.3478

Inverse Universe

The Inverse Universe completely reimagines the original color for something new.



64.5166, 0.2853, 0.3254



88.2231, 0.2796, 0.3245



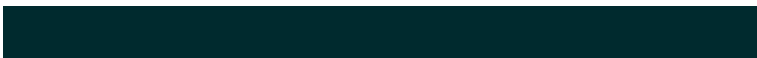
54.9631, 0.2840, 0.3014



14.6543, 0.2982, 0.3272



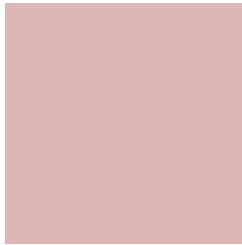
28.3284, 0.2182, 0.3056



1.8860, 0.2194, 0.3097

Previews

White Background



This preview shows how the Yxy color 52.3779, 0.3473, 0.3326 looks on a white background.

Color Contrast Check

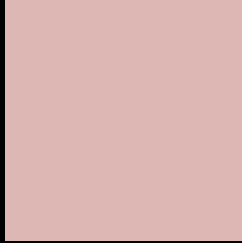
Large Text (above 18pt) WCAG AA × Fail

Any Text WCAG AA × Fail

Large Text (above 18pt) WCAG AAA × Fail

Any Text WCAG AAA × Fail

Black Background



This preview shows how the Yxy color 52.3779, 0.3473, 0.3326 looks on a black background.

Color Contrast Check

Large Text (above 18pt) WCAG AA ✓ Pass

Any Text WCAG AA ✓ Pass

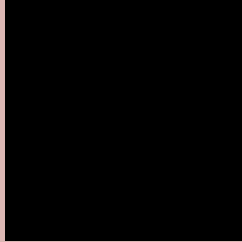
Large Text (above 18pt) WCAG AAA ✓ Pass

Any Text WCAG AAA ✓ Pass

If you want to check with other color combinations, try the [Color Contrast Checker](#).

Yxy 52.3779, 0.3473, 0.3326

Background



This preview shows how black text looks on a background with the Yxy color 52.3779, 0.3473, 0.3326.



This preview shows how white text looks on a background with the Yxy color 52.3779, 0.3473, 0.3326.

Color Blindness Simulation

Color vision deficiency is a very complex topic, and I could not describe the different causes any better than Wikipedia does, so if you want to learn more, you should check out their [article about color blindness](#).

Dichromacy



Original Color

52.3779, 0.3473, 0.3326

Protanopia

52.5926, 0.3230, 0.3377

Deuteranopia

52.4403, 0.3425, 0.3350



Tritanopia

52.5175, 0.3367, 0.3130

Trichromacy



Original Color

52.3779, 0.3473, 0.3326

Protanomaly

52.3645, 0.3309, 0.3351

Deuteranomaly

52.3280, 0.3444, 0.3338

Tritanomaly

52.5458, 0.3399, 0.3198

Monochromacy



Original Color

52.3779, 0.3473, 0.3326

Achromatopsia

53.9479, 0.3127, 0.3290

Achromatomaly

53.1975, 0.3242, 0.3302

CSS Examples

Text

The CSS property to change the color of the text to Yxy 52.3779, 0.3473, 0.3326 is called "color". The color property can be set on classes, ids or directly on the HTML element.

This example shows how text in the color `rgb(220, 183, 180)` looks like.

```
.text, #text, p{  
    color:rgb(220, 183, 180)  
}
```

If you want to add a text shadow in that color use the text-shadow property, you can generate a text shadow directly with our [CSS Text Shadow Generator](#).

Here you see how black text with a 4 pixel rgb(220, 183, 180) colored shadow looks like.

```
.shadow{ text-shadow: 4px 4px 2px rgb(220, 183, 180) }
```

Border

The CSS property to change the border of an element to Yxy 52.3779, 0.3473, 0.3326 is called "border". The border property can be set on classes, ids or directly on the HTML element.

This example shows the color as border, it can be applied via the CSS property "border" or "border-color".

```
.border, #border, table{ border:4px solid rgb(220, 183, 180) }
```

If only the border color should be changed use the property `border-color`.

```
.border{ border-color:rgb(220, 183, 180) }
```

If you want to add a box shadow in that color use:

Here you see how a box with a 4 pixel `rgb(220, 183, 180)` colored shadow looks like.

```
.boxshadow{ -moz-box-shadow:4px 4px 4px  
4px rgb(220, 183, 180); -webkit-box-  
shadow:4px 4px 4px 4px rgb(220, 183, 180);  
box-shadow:4px 4px 4px 4px rgb(220, 183,  
180) }
```


Background

The CSS property to change the background color of an element to Yxy 52.3779, 0.3473, 0.3326 is called "background". The background property can be set on classes, ids or directly on the HTML element.

```
.background, #background, body{  
background: rgb(220, 183, 180) }
```

If only the background color should be changed can be used:

```
.background{ background-color: rgb(220,  
183, 180) }
```

This example shows the color as background, it is applied via the CSS property "background".

To optimize and compress your CSS code, you can use our [online CSS compressor and optimizer](#) based on csstidy. If you want to create a linear or radial gradient as background or border, check our [CSS Gradient Generator](#).

Hey! You found this booklet interesting? Support Converting Colors with the new Membership Option!

The pro membership hides all ads, plus gives you double the colors in the color bucket, and more awesome pro features!

[Learn more, Memberships starting at \\$2.50/m!](#)

**Follow me
on Twitter!**

@ConvertingColor