

Converting Colors

$Y_{xy}(52.4295, 0.3742, 0.3703)$

Have a look what the booklet for
Yxy(52.4295, 0.3742, 0.3703)
contains.

Yxy(52.4295, 0.3742, 0.3703)	3
Conversions	4
Details	6
Harmonies	12
Previews	24
Color Blindness Simulation	27
CSS Examples	30

Color

Yxy(52.4295, 0.3742, 0.3703)

Conversions

Conversions Part 1

Format	Color
Hex	DEB996
RGB	222, 185, 150
RGB Percent	87%, 73%, 59%
CMY	0.1293, 0.2745, 0.4118
CMYK	0.00, 0.17, 0.32, 0.13
HSL	29°, 52%, 73%
HSV	29°, 32%, 87%
XYZ	52.9817, 52.4295, 36.1754
YIQ	192.0730, 33.2870, -3.0410

Conversions

Conversions Part 2

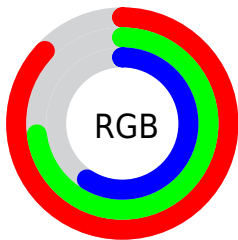
Format	Color
R _Y B	222, 218, 150
Decimal	14596502
CIE Lab	77.54, 8.32, 22.75
CIE LCh	78, 24.224, 69.913
Yxy	52.4295, 0.3742, 0.3703
Android (android.graphics.Color)	4292786582 (0xFFDEB996)
YUV	192.0730, -20.7420, 26.2460
Hunter-Lab	72.4082, 3.8955, 21.0643

Details

The Yxy color $52.4295, 0.3742, 0.3703$ is a light color, and the websafe version is hex `FFCC99`. A complement of this color would be $47.3015, 0.2610, 0.2836$, and the grayscale version is $52.8677, 0.3127, 0.3290$.

A 20% lighter version of the original color is $88.5302, 0.3455, 0.3659$, and $25.5104, 0.3910, 0.3803$ is the 20% darker color. If you saturate the color by 10%, you get $47.1991, 0.3985, 0.3833$, and if you desaturate by 10%, it is $58.1835, 0.3524, 0.3571$.

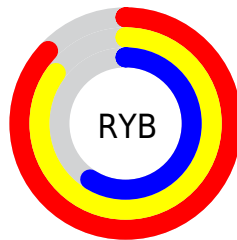
Distribution



Red (87%)

Green (73%)

Blue (59%)



Red (87%)

Yellow (85%)

Blue (59%)

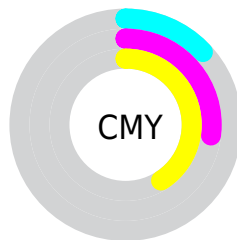


Cyan (0%)

Magenta (17%)

Yellow (32%)

Black (13%)



Cyan (13%)


Magenta (27%)


Yellow (41%)

Brightness & Saturation Gradients

These gradients show how the Yxy color 52.4295, 0.3742, 0.3703 changes by changing the brightness by 10 percent. The first figure shows a shift by +10% for each color and the second figure -10%.

Similar to the brightness gradients but the following saturation gradients show a change of the Yxy color 52.4295, 0.3742, 0.3703 by changing the saturation by 10% instead.


 52.4295, 0.3742,
0.3703


 52.4295, 0.3742,
0.3703


396.0925, 0.3440,
0.3507

 37.3475, 0.3815,
0.3748


 93.7644, 0.3634,
0.3635

 25.4767, 0.3908,
0.3804


 120.7860, 0.3593,
0.3608

 16.4326, 0.4028,
0.3874


152.5564, 0.3558,
0.3585

 9.8308, 0.4190,
0.3964

189.4599, 0.3527,
0.3566

 5.2869, 0.4417,
0.4080

231.8808, 0.3501,
0.3548

 2.4166, 0.4803,
0.4272

280.2036, 0.3478,

 0.8344, 0.5466,

0.3533

0.4534

334.8127, 0.3458,
0.3519

0.0000, 0.0000,
0.0000

52.4295, 0.3742,
0.3703

52.4295, 0.3742,
0.3703

47.1991, 0.3985,
0.3833

58.1835, 0.3524,
0.3571

42.4682, 0.4250,
0.3953

64.4695, 0.3333,
0.3442

38.2218, 0.4530,
0.4051

71.3048, 0.3165,
0.3319

34.4405, 0.4812,
0.4116

78.7037, 0.3019,
0.3204

31.1036, 0.5080,
0.4135

86.2876, 0.2925,
0.3157

■ 28.1874, 0.5314,
0.4099

■ 93.2953, 0.2928,
0.3274

■ 26.2400, 0.5466,
0.4042

■ 94.2727, 0.2929,
0.3289

Harmonies

Analogous

The Analogous color harmony consists of three colors that are next to each other on the color wheel.



52.4295, 0.3763, 0.3459



52.4295, 0.3742, 0.3703



52.4295, 0.3551, 0.3854

Triad

The Triadic color harmony groups three colors that are evenly spaced from another and form a triangle on the color wheel.



52.4295, 0.3742, 0.3703



52.4295, 0.2668, 0.3370



52.4295, 0.2978, 0.2797

Complementary

The Complementary color scheme is a pair of colors which are on the opposite of each other on the color wheel.



52.4295, 0.3742, 0.3703



47.3015, 0.2610, 0.2836

Split Complementary

Split-complementary colors differ from the complementary color scheme. The scheme consists of three colors, the original color and two neighbors of the complement color.



52.4295, 0.2702, 0.2757



52.4295, 0.3742, 0.3703



52.4295, 0.2531, 0.3068

Square

The Square scheme is like the rectangle color scheme, but the four colors are evenly spaced on the color wheel.



52.4295, 0.3742, 0.3703



52.4295, 0.2928, 0.3667



52.4295, 0.2543, 0.2849



52.4295, 0.3309, 0.2953

Rectangle

The Rectangle color scheme consists of four colors that form a rectangle on the color wheel.



52.4295, 0.3742, 0.3703



52.4295, 0.3357, 0.3870



52.4295, 0.2543, 0.2849



52.4295, 0.2876, 0.2770

Sweetspot

The Sweet Spot groups the original color and five complimentary colors.



52.4319, 0.3742, 0.3703



90.3866, 0.3291, 0.3412



40.9378, 0.3490, 0.2856



19.0706, 0.3316, 0.3430



0.0000, 0.0000, 0.0000



21.4041, 0.3127, 0.3290

Same Dimension

The Same Dimension uses a secret algorithm to generate beautiful new colors.



52.4319, 0.3742, 0.3703



66.7780, 0.3906, 0.3793



69.3518, 0.3619, 0.4085



14.7947, 0.3280, 0.3404



15.8039, 0.5443, 0.4061



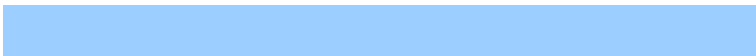
1.2742, 0.5200, 0.4253

Inverse Universe

The Inverse Universe completely reimagines the original color for something new.



47.3015, 0.2610, 0.2836



58.7047, 0.2499, 0.2722



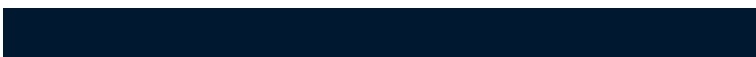
33.9513, 0.2550, 0.2349



14.4024, 0.2981, 0.3173



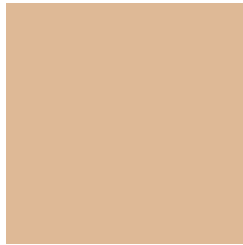
10.5173, 0.1786, 0.1630



0.9081, 0.1862, 0.1904

Previews

White Background



This preview shows how the Yxy color 52.4295, 0.3742, 0.3703 looks on a white background.

Color Contrast Check

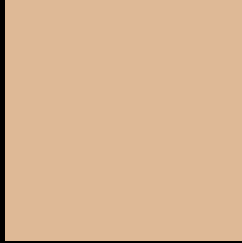
Large Text (above 18pt) WCAG AA × Fail

Any Text WCAG AA × Fail

Large Text (above 18pt) WCAG AAA × Fail

Any Text WCAG AAA × Fail

Black Background



This preview shows how the Yxy color 52.4295, 0.3742, 0.3703 looks on a black background.

Color Contrast Check

Large Text (above 18pt) WCAG AA ✓ Pass

Any Text WCAG AA ✓ Pass

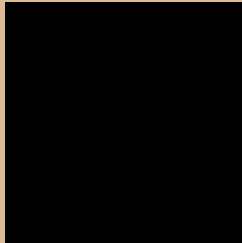
Large Text (above 18pt) WCAG AAA ✓ Pass

Any Text WCAG AAA ✓ Pass

If you want to check with other color combinations, try the [Color Contrast Checker](#).

Yxy 52.4295, 0.3742, 0.3703

Background



This preview shows how black text looks on a background with the Yxy color 52.4295, 0.3742, 0.3703.



This preview shows how white text looks on a background with the Yxy color 52.4295, 0.3742, 0.3703.

Color Blindness Simulation

Color vision deficiency is a very complex topic, and I could not describe the different causes any better than Wikipedia does, so if you want to learn more, you should check out their [article about color blindness](#).

Dichromacy



Original Color

52.4295, 0.3742, 0.3703

Protanopia

52.3989, 0.3537, 0.3761

Deuteranopia

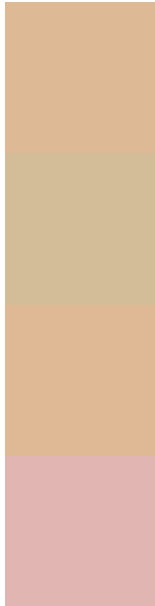
52.3303, 0.3763, 0.3689



Tritanopia

52.4213, 0.3431, 0.3132

Trichromacy



Original Color

52.4295, 0.3742, 0.3703

Protanomaly

52.5111, 0.3613, 0.3740

Deuteranomaly

52.1710, 0.3754, 0.3690

Tritanomaly

52.2296, 0.3547, 0.3338

Monochromacy



Original Color

52.4295, 0.3742, 0.3703

Achromatopsia

52.7115, 0.3127, 0.3290

Achromatomaly

52.2660, 0.3339, 0.3438

CSS Examples

Text

The CSS property to change the color of the text to Yxy 52.4295, 0.3742, 0.3703 is called "color". The color property can be set on classes, ids or directly on the HTML element.

This example shows how text in the color `rgb(222, 185, 150)` looks like.

```
.text, #text, p{  
    color:rgb(222, 185, 150)  
}
```

If you want to add a text shadow in that color use the text-shadow property, you can generate a text shadow directly with our [CSS Text Shadow Generator](#).

Here you see how black text with a 4 pixel rgb(222, 185, 150) colored shadow looks like.

```
.shadow{ text-shadow: 4px 4px 2px rgb(222, 185, 150) }
```

Border

The CSS property to change the border of an element to Yxy 52.4295, 0.3742, 0.3703 is called "border". The border property can be set on classes, ids or directly on the HTML element.

This example shows the color as border, it can be applied via the CSS property "border" or "border-color".

```
.border, #border, table{ border:4px solid rgb(222, 185, 150) }
```

If only the border color should be changed use the property `border-color`.

```
.border{ border-color:rgb(222, 185, 150) }
```

If you want to add a box shadow in that color use:

Here you see how a box with a 4 pixel `rgb(222, 185, 150)` colored shadow looks like.

```
.boxshadow{ -moz-box-shadow:4px 4px 4px  
4px rgb(222, 185, 150); -webkit-box-  
shadow:4px 4px 4px 4px rgb(222, 185, 150);  
box-shadow:4px 4px 4px 4px rgb(222, 185,  
150) }
```


Background

The CSS property to change the background color of an element to Yxy 52.4295, 0.3742, 0.3703 is called "background". The background property can be set on classes, ids or directly on the HTML element.

```
.background, #background, body{  
background: rgb(222, 185, 150) }
```

If only the background color should be changed can be used:

```
.background{ background-color: rgb(222,  
185, 150) }
```

This example shows the color as background, it is applied via the CSS property "background".

To optimize and compress your CSS code, you can use our [online CSS compressor and optimizer](#) based on csstidy. If you want to create a linear or radial gradient as background or border, check our [CSS Gradient Generator](#).

Hey! You found this booklet interesting? Support Converting Colors with the new Membership Option!

The pro membership hides all ads, plus gives you double the colors in the color bucket, and more awesome pro features!

[Learn more, Memberships starting at \\$2.50/m!](#)

**Follow me
on Twitter!**

@ConvertingColor