

Converting Colors

$Y_{xy}(52.4925, 0.3776, 0.3737)$

Have a look what the booklet for
Yxy(52.4925, 0.3776, 0.3737)
contains.

Yxy(52.4925, 0.3776, 0.3737)	3
Conversions	4
Details	6
Harmonies	12
Previews	24
Color Blindness Simulation	27
CSS Examples	30

Color

Yxy(52.4925, 0.3776, 0.3737)

Conversions

Conversions Part 1

Format	Color
Hex	DFB993
RGB	223, 185, 147
RGB Percent	87%, 73%, 58%
CMY	0.1256, 0.2744, 0.4236
CMYK	0.00, 0.17, 0.34, 0.13
HSL	30°, 54%, 73%
HSV	30°, 34%, 87%
XYZ	53.0403, 52.4925, 34.9341
YIQ	192.0300, 34.8460, -3.7620

Conversions

Conversions Part 2

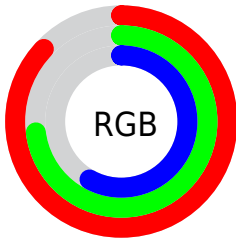
Format	Color
R _Y B	223, 223, 147
Decimal	14662035
CIE Lab	77.57, 8.31, 24.42
CIE LCh	78, 25.793, 71.205
Yxy	52.4925, 0.3776, 0.3737
Android (android.graphics.Color)	4292852115 (0xFFDFB993)
YUV	192.0300, -22.1998, 27.1607
Hunter-Lab	72.4517, 3.8855, 22.1283

Details

The Yxy color $52.4925, 0.3776, 0.3737$ is a light color, and the websafe version is hex `FFCC99`. A complement of this color would be $46.2036, 0.2581, 0.2794$, and the grayscale version is $52.8472, 0.3127, 0.3290$.

A 20% lighter version of the original color is $88.3876, 0.3475, 0.3690$, and $25.5625, 0.3956, 0.3845$ is the 20% darker color. If you saturate the color by 10%, you get $47.3817, 0.4019, 0.3869$, and if you desaturate by 10%, it is $58.1090, 0.3556, 0.3601$.

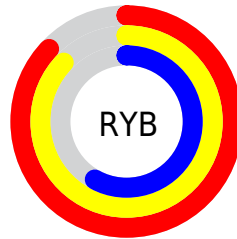
Distribution



Red (87%)

Green (73%)

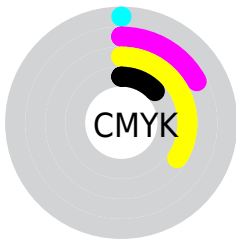
Blue (58%)



Red (87%)

Yellow (87%)

Blue (58%)

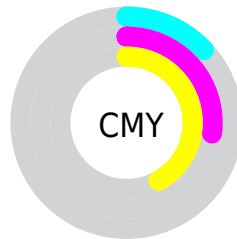


Cyan (0%)

Magenta (17%)

Yellow (34%)

Black (13%)



Cyan (13%)

Magenta (27%)


Yellow (42%)

Brightness & Saturation Gradients

These gradients show how the Yxy color 52.4925, 0.3776, 0.3737 changes by changing the brightness by 10 percent. The first figure shows a shift by +10% for each color and the second figure -10%.

Similar to the brightness gradients but the following saturation gradients show a change of the Yxy color 52.4925, 0.3776, 0.3737 by changing the saturation by 10% instead.


 52.4925, 0.3776,
0.3737


 52.4925, 0.3776,
0.3737


396.3350, 0.3458,
0.3525

 37.3978, 0.3853,
0.3786


 93.8572, 0.3662,
0.3663

 25.5156, 0.3950,
0.3845


 120.8959, 0.3619,
0.3635

 16.4616, 0.4076,
0.3920


152.6848, 0.3582,
0.3610

 9.8514, 0.4244,
0.4016

189.6082, 0.3550,
0.3589

 5.3005, 0.4478,
0.4137

232.0505, 0.3522,
0.3570

 2.4247, 0.4900,
0.4360

280.3962, 0.3498,

 0.8385, 0.5464,

0.3553

0.4536

335.0295, 0.3477,
0.3539

0.0000, 0.0000,
0.0000

52.4925, 0.3776,
0.3737

52.4925, 0.3776,
0.3737

47.3817, 0.4019,
0.3869

58.1090, 0.3556,
0.3601

42.7530, 0.4283,
0.3990

64.2392, 0.3362,
0.3468

38.5917, 0.4558,
0.4087

70.9000, 0.3191,
0.3340

34.8790, 0.4832,
0.4149

78.1052, 0.3041,
0.3220

31.5943, 0.5088,
0.4162

85.6424, 0.2931,
0.3144

■ 28.7142, 0.5309,
0.4120

■ 92.4290, 0.2934,
0.3258

■ 27.1823, 0.5424,
0.4076

■ 94.4241, 0.2934,
0.3289

Harmonies

Analogous

The Analogous color harmony consists of three colors that are next to each other on the color wheel.



52.4925, 0.3808, 0.3479



52.4925, 0.3776, 0.3737



52.4925, 0.3565, 0.3894

Triad

The Triadic color harmony groups three colors that are evenly spaced from another and form a triangle on the color wheel.



52.4925, 0.3776, 0.3737



52.4925, 0.2630, 0.3360



52.4925, 0.2983, 0.2773

Complementary

The Complementary color scheme is a pair of colors which are on the opposite of each other on the color wheel.



52.4925, 0.3776, 0.3737



46.2036, 0.2581, 0.2794

Split Complementary

Split-complementary colors differ from the complementary color scheme. The scheme consists of three colors, the original color and two neighbors of the complement color.



52.4925, 0.2686, 0.2723



52.4925, 0.3776, 0.3737



52.4925, 0.2492, 0.3039

Square

The Square scheme is like the rectangle color scheme, but the four colors are evenly spaced on the color wheel.



52.4925, 0.3776, 0.3737



52.4925, 0.2900, 0.3680



52.4925, 0.2512, 0.2813



52.4925, 0.3335, 0.2941

Rectangle

The Rectangle color scheme consists of four colors that form a rectangle on the color wheel.



52.4925, 0.3776, 0.3737



52.4925, 0.3356, 0.3907



52.4925, 0.2512, 0.2813



52.4925, 0.2874, 0.2742

Sweetspot

The Sweet Spot groups the original color and five complimentary colors.



52.4949, 0.3776, 0.3737



90.6053, 0.3290, 0.3416



40.0494, 0.3527, 0.2847



19.1234, 0.3315, 0.3434



0.0000, 0.0000, 0.0000



21.4041, 0.3127, 0.3290

Same Dimension

The Same Dimension uses a secret algorithm to generate beautiful new colors.



52.4949, 0.3776, 0.3737



66.0813, 0.3950, 0.3834



70.5526, 0.3639, 0.4136



14.8282, 0.3280, 0.3408



16.2129, 0.5401, 0.4094



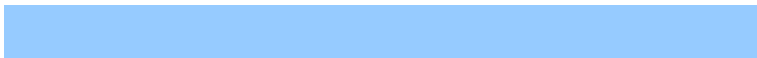
1.3029, 0.5165, 0.4281

Inverse Universe

The Inverse Universe completely reimagines the original color for something new.



46.2036, 0.2581, 0.2794



56.3062, 0.2464, 0.2668



32.3915, 0.2514, 0.2276



14.3689, 0.2981, 0.3170



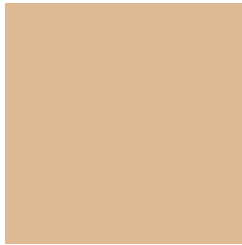
10.0947, 0.1773, 0.1582



0.8788, 0.1850, 0.1861

Previews

White Background



This preview shows how the Yxy color 52.4925, 0.3776, 0.3737 looks on a white background.

Color Contrast Check

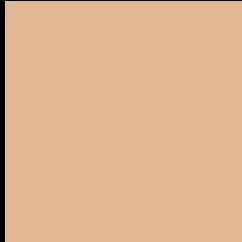
Large Text (above 18pt) WCAG AA × Fail

Any Text WCAG AA × Fail

Large Text (above 18pt) WCAG AAA × Fail

Any Text WCAG AAA × Fail

Black Background



This preview shows how the Yxy color 52.4925, 0.3776, 0.3737 looks on a black background.

Color Contrast Check

Large Text (above 18pt) WCAG AA ✓ Pass

Any Text WCAG AA ✓ Pass

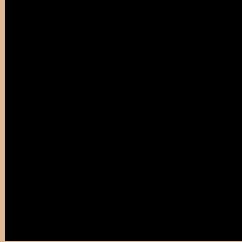
Large Text (above 18pt) WCAG AAA ✓ Pass

Any Text WCAG AAA ✓ Pass

If you want to check with other color combinations, try the [Color Contrast Checker](#).

Yxy 52.4925, 0.3776, 0.3737

Background



This preview shows how black text looks on a background with the Yxy color 52.4925, 0.3776, 0.3737.



This preview shows how white text looks on a background with the Yxy color 52.4925, 0.3776, 0.3737.

Color Blindness Simulation

Color vision deficiency is a very complex topic, and I could not describe the different causes any better than Wikipedia does, so if you want to learn more, you should check out their [article about color blindness](#).

Dichromacy



Original Color

52.4925, 0.3776, 0.3737

Protanopia

52.7387, 0.3558, 0.3810

Deuteranopia

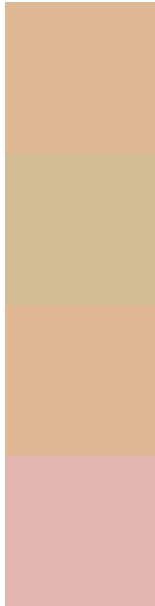
52.3951, 0.3798, 0.3722



Tritanopia

52.5844, 0.3439, 0.3132

Trichromacy



Original Color

52.4925, 0.3776, 0.3737

Protanomaly

52.4140, 0.3638, 0.3776

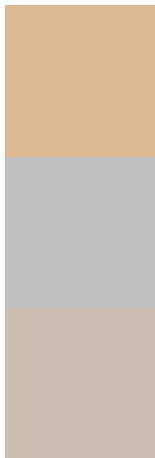
Deuteranomaly

52.2349, 0.3789, 0.3724

Tritanomaly

52.3511, 0.3565, 0.3349

Monochromacy



Original Color

52.4925, 0.3776, 0.3737

Achromatopsia

52.7115, 0.3127, 0.3290

Achromatomaly

52.2263, 0.3347, 0.3450

CSS Examples

Text

The CSS property to change the color of the text to Yxy 52.4925, 0.3776, 0.3737 is called "color". The color property can be set on classes, ids or directly on the HTML element.

This example shows how text in the color `rgb(223, 185, 147)` looks like.

```
.text, #text, p{  
    color:rgb(223, 185, 147)  
}
```

If you want to add a text shadow in that color use the text-shadow property, you can generate a text shadow directly with our [CSS Text Shadow Generator](#).

Here you see how black text with a 4 pixel rgb(223, 185, 147) colored shadow looks like.

```
.shadow{ text-shadow: 4px 4px 2px rgb(223, 185, 147) }
```

Border

The CSS property to change the border of an element to Yxy 52.4925, 0.3776, 0.3737 is called "border". The border property can be set on classes, ids or directly on the HTML element.

This example shows the color as border, it can be applied via the CSS property "border" or "border-color".

```
.border, #border, table{ border:4px solid rgb(223, 185, 147) }
```

If only the border color should be changed use the property `border-color`.

```
.border{ border-color:rgb(223, 185, 147) }
```

If you want to add a box shadow in that color use:

Here you see how a box with a 4 pixel `rgb(223, 185, 147)` colored shadow looks like.

```
.boxshadow{ -moz-box-shadow:4px 4px 4px  
4px rgb(223, 185, 147); -webkit-box-  
shadow:4px 4px 4px 4px rgb(223, 185, 147);  
box-shadow:4px 4px 4px 4px rgb(223, 185,  
147) }
```


Background

The CSS property to change the background color of an element to Yxy 52.4925, 0.3776, 0.3737 is called "background". The background property can be set on classes, ids or directly on the HTML element.

```
.background, #background, body{  
background: rgb(223, 185, 147) }
```

If only the background color should be changed can be used:

```
.background{ background-color: rgb(223,  
185, 147) }
```

This example shows the color as background, it is applied via the CSS property "background".

To optimize and compress your CSS code, you can use our [online CSS compressor and optimizer](#) based on csstidy. If you want to create a linear or radial gradient as background or border, check our [CSS Gradient Generator](#).

Hey! You found this booklet interesting? Support Converting Colors with the new Membership Option!

The pro membership hides all ads, plus gives you double the colors in the color bucket, and more awesome pro features!

[Learn more, Memberships starting at \\$2.50/m!](#)

**Follow me
on Twitter!**

@ConvertingColor