

Converting Colors

$Yxy(52.4985, 0.3319, 0.3271)$

Have a look what the booklet for
Yxy(52.4985, 0.3319, 0.3271)
contains.

Yxy(52.4503, 0.3314, 0.3267)	3
Conversions	4
Details	6
Harmonies	12
Previews	24
Color Blindness Simulation	27
CSS Examples	30

Color

Yxy(52.4503, 0.3314, 0.3267)

Conversions

Conversions Part 1

Format	Color
Hex	D2BABC
RGB	210, 186, 188
RGB Percent	82%, 73%, 74%
CMY	0.1766, 0.2705, 0.2628
CMYK	0.00, 0.11, 0.10, 0.18
HSL	355°, 21%, 78%
HSV	355°, 11%, 82%
XYZ	53.2049, 52.4503, 54.8906
YIQ	193.4040, 13.6620, 5.7100

Conversions

Conversions Part 2

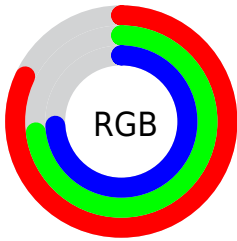
Format	Color
R _Y B	210, 186, 188
Decimal	13810364
CIE Lab	77.55, 8.84, 2.12
CIE LCh	78, 9.093, 13.460
Yxy	52.4503, 0.3314, 0.3267
Android (android.graphics.Color)	4292000444 (0xFFD2BABC)
YUV	193.4040, -2.6642, 14.5547
Hunter-Lab	72.4226, 4.3946, 5.7587

Details

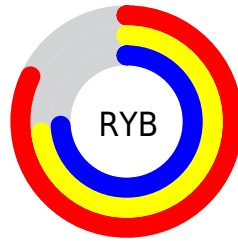
The Yxy color $52.4503, 0.3314, 0.3267$ is a light color, and the websafe version is hex `CCCCCC`. A complement of this color would be $61.0689, 0.2966, 0.3313$, and the grayscale version is $53.5871, 0.3127, 0.3290$.

A 20% lighter version of the original color is $91.2959, 0.3200, 0.3271$, and $25.4929, 0.3359, 0.3259$ is the 20% darker color. If you saturate the color by 10%, you get $43.4690, 0.3521, 0.3246$, and if you desaturate by 10%, it is $62.8470, 0.3148, 0.3287$.

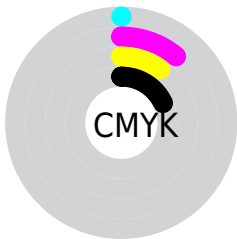
Distribution



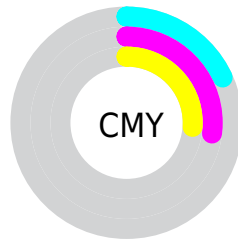
- Red (82%)
- Green (73%)
- Blue (74%)



- Red (82%)
- Yellow (73%)
- Blue (74%)



- Cyan (0%)
- Magenta (11%)
- Yellow (10%)
- Black (18%)




- Cyan (18%)
- Magenta (27%)
- Yellow (26%)

Brightness & Saturation Gradients


These gradients show how the Yxy color 52.4503, 0.3314, 0.3267 changes by changing the brightness by 10 percent. The first figure shows a shift by +10% for each color and the second figure -10%.


Similar to the brightness gradients but the following saturation gradients show a change of the Yxy color 52.4503, 0.3314, 0.3267 by changing the saturation by 10% instead.


 52.4503, 0.3314,
0.3267

 52.4503, 0.3314,
0.3267


396.1726, 0.3222,
0.3279

 37.3641, 0.3336,
0.3264


 93.7950, 0.3281,
0.3271

 25.4895, 0.3365,
0.3260


120.8223, 0.3268,
0.3273

 16.4422, 0.3403,
0.3255


152.5988, 0.3258,
0.3274

 9.8376, 0.3455,
0.3247

189.5088, 0.3249,
0.3276

 5.2914, 0.3531,
0.3236

231.9368, 0.3241,
0.3277

 2.4192, 0.3653,
0.3216

280.2672, 0.3234,

 0.8358, 0.3900,

0.3277

0.3191

334.8843, 0.3228,
0.3278

0.0000, 0.0000,
0.0000

52.4503, 0.3314,
0.3267

52.4503, 0.3314,
0.3267

43.4690, 0.3521,
0.3246

62.8470, 0.3148,
0.3287

35.8354, 0.3779,
0.3224

74.7094, 0.3014,
0.3306

29.4864, 0.4094,
0.3203

88.0936, 0.2906,
0.3323

24.3516, 0.4472,
0.3185

92.4358, 0.2860,
0.3289

20.3532, 0.4903,
0.3175

■ 17.4050, 0.5361,
0.3177

■ 15.4081, 0.5793,
0.3195

■ 14.2447, 0.6133,
0.3227

■ 13.7372, 0.6321,
0.3256

Harmonies

Analogous

The Analogous color harmony consists of three colors that are next to each other on the color wheel.



52.4503, 0.3212, 0.3169



52.4503, 0.3314, 0.3267



52.4503, 0.3366, 0.3373

Triad

The Triadic color harmony groups three colors that are evenly spaced from another and form a triangle on the color wheel.



52.4503, 0.3314, 0.3267



52.4503, 0.3163, 0.3487



52.4503, 0.2907, 0.3118

Complementary

The Complementary color scheme is a pair of colors which are on the opposite of each other on the color wheel.



52.4503, 0.3314, 0.3267



61.0689, 0.2966, 0.3313

Split Complementary

Split-complementary colors differ from the complementary color scheme. The scheme consists of three colors, the original color and two neighbors of the complement color.



52.4503, 0.2895, 0.3200



52.4503, 0.3314, 0.3267



52.4503, 0.3041, 0.3416

Square

The Square scheme is like the rectangle color scheme, but the four colors are evenly spaced on the color wheel.



52.4503, 0.3314, 0.3267



52.4503, 0.3277, 0.3503



52.4503, 0.2943, 0.3310



52.4503, 0.2977, 0.3083

Rectangle

The Rectangle color scheme consists of four colors that form a rectangle on the color wheel.



52.4503, 0.3314, 0.3267



52.4503, 0.3364, 0.3434



52.4503, 0.2943, 0.3310



52.4503, 0.2896, 0.3141

Sweetspot

The Sweet Spot groups the original color and five complimentary colors.



52.4526, 0.3314, 0.3267



94.7718, 0.3172, 0.3284



53.1824, 0.3124, 0.3010



19.9936, 0.3185, 0.3282



0.0000, 0.0000, 0.0000



21.4041, 0.3127, 0.3290

Same Dimension

The Same Dimension uses a secret algorithm to generate beautiful new colors.



52.4526, 0.3314, 0.3267



77.3664, 0.3367, 0.3261



56.7196, 0.3316, 0.3409



11.8238, 0.3278, 0.3271



8.3891, 0.6302, 0.3245



0.4747, 0.6010, 0.3085

Inverse Universe

The Inverse Universe completely reimagines the original color for something new.



52.4526, 0.3314, 0.3267



77.3664, 0.3367, 0.3261



56.3946, 0.2951, 0.3168



11.8238, 0.3278, 0.3271



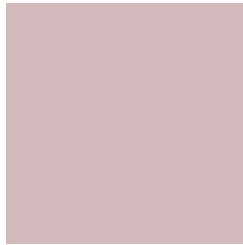
8.3891, 0.6302, 0.3245



0.4747, 0.6010, 0.3085

Previews

White Background



This preview shows how the Yxy color 52.4503, 0.3314, 0.3267 looks on a white background.

Color Contrast Check

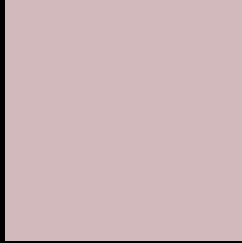
Large Text (above 18pt) WCAG AA × Fail

Any Text WCAG AA × Fail

Large Text (above 18pt) WCAG AAA × Fail

Any Text WCAG AAA × Fail

Black Background



This preview shows how the Yxy color 52.4503, 0.3314, 0.3267 looks on a black background.

Color Contrast Check

Large Text (above 18pt) WCAG AA ✓ Pass

Any Text WCAG AA ✓ Pass

Large Text (above 18pt) WCAG AAA ✓ Pass

Any Text WCAG AAA ✓ Pass

If you want to check with other color combinations, try the [Color Contrast Checker](#).

Yxy 52.4503, 0.3314, 0.3267

Background



This preview shows how black text looks on a background with the Yxy color 52.4503, 0.3314, 0.3267.



This preview shows how white text looks on a background with the Yxy color 52.4503, 0.3314, 0.3267.

Color Blindness Simulation

Color vision deficiency is a very complex topic, and I could not describe the different causes any better than Wikipedia does, so if you want to learn more, you should check out their [article about color blindness](#).

Dichromacy



Original Color

52.4503, 0.3314, 0.3267

Protanopia

52.6253, 0.3160, 0.3290

Deuteranopia

52.1776, 0.3324, 0.3255



Tritanopia

52.2534, 0.3236, 0.3114

Trichromacy



Original Color

52.4503, 0.3314, 0.3267

Protanomaly

52.3923, 0.3210, 0.3278

Deuteranomaly

52.1776, 0.3324, 0.3255

Tritanomaly

52.4869, 0.3267, 0.3172

Monochromacy



Original Color

52.4503, 0.3314, 0.3267

Achromatopsia

53.3276, 0.3127, 0.3290

Achromatomaly

52.7306, 0.3193, 0.3278

CSS Examples

Text

The CSS property to change the color of the text to Yxy 52.4503, 0.3314, 0.3267 is called "color". The color property can be set on classes, ids or directly on the HTML element.

This example shows how text in the color `rgb(210, 186, 188)` looks like.

```
.text, #text, p{  
    color:rgb(210, 186, 188)  
}
```

If you want to add a text shadow in that color use the text-shadow property, you can generate a text shadow directly with our [CSS Text Shadow Generator](#).

Here you see how black text with a 4 pixel rgb(210, 186, 188) colored shadow looks like.

```
.shadow{ text-shadow: 4px 4px 2px rgb(210, 186, 188) }
```

Border

The CSS property to change the border of an element to Yxy 52.4503, 0.3314, 0.3267 is called "border". The border property can be set on classes, ids or directly on the HTML element.

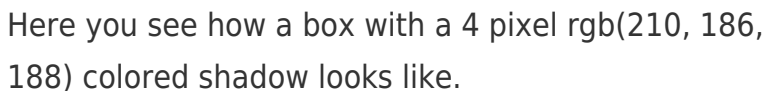
This example shows the color as border, it can be applied via the CSS property "border" or "border-color".

```
.border, #border, table{ border:4px solid rgb(210, 186, 188) }
```

If only the border color should be changed use the property `border-color`.

```
.border{ border-color:rgb(210, 186, 188) }
```

If you want to add a box shadow in that color use:



Here you see how a box with a 4 pixel `rgb(210, 186, 188)` colored shadow looks like.

```
.boxshadow{ -moz-box-shadow:4px 4px 4px  
4px rgb(210, 186, 188); -webkit-box-  
shadow:4px 4px 4px 4px rgb(210, 186, 188);  
box-shadow:4px 4px 4px 4px rgb(210, 186,  
188) }
```


Background

The CSS property to change the background color of an element to Yxy 52.4503, 0.3314, 0.3267 is called "background". The background property can be set on classes, ids or directly on the HTML element.

```
.background, #background, body{  
background: rgb(210, 186, 188) }
```

If only the background color should be changed can be used:

```
.background{ background-color: rgb(210,  
186, 188) }
```

This example shows the color as background, it is applied via the CSS property "background".

To optimize and compress your CSS code, you can use our [online CSS compressor and optimizer](#) based on csstidy. If you want to create a linear or radial gradient as background or border, check our [CSS Gradient Generator](#).

Hey! You found this booklet interesting? Support Converting Colors with the new Membership Option!

The pro membership hides all ads, plus gives you double the colors in the color bucket, and more awesome pro features!

[Learn more, Memberships starting at \\$2.50/m!](#)

**Follow me
on Twitter!**

@ConvertingColor