

Converting Colors

$Yxy(52.5591, 0.3410, 0.3458)$

Have a look what the booklet for
Yxy(52.5591, 0.3410, 0.3458)
contains.

Yxy(52.5777, 0.3417, 0.3460)	3
Conversions	4
Details	6
Harmonies	12
Previews	24
Color Blindness Simulation	27
CSS Examples	30

Color

Yxy(52.5777, 0.3417, 0.3460)

Conversions

Conversions Part 1

Format	Color
Hex	D1BCAE
RGB	209, 188, 174
RGB Percent	82%, 74%, 68%
CMY	0.1803, 0.2628, 0.3176
CMYK	0.00, 0.10, 0.17, 0.18
HSL	24°, 28%, 75%
HSV	24°, 17%, 82%
XYZ	51.9243, 52.5777, 47.4567
YIQ	192.6830, 17.0100, 0.0980

Conversions

Conversions Part 2

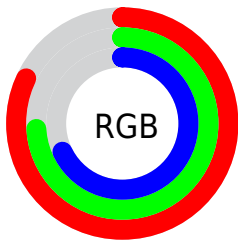
Format	Color
RYB	209, 197, 174
Decimal	13745326
CIELab	77.63, 5.18, 9.78
CIElCh	78, 11.073, 62.083
Yxy	52.5777, 0.3417, 0.3460
Android (android.graphics.Color)	4291935406 (0xFFD1BCAE)
YUV	192.6830, -9.2107, 14.3100
Hunter-Lab	72.5105, 0.9293, 11.9532

Details

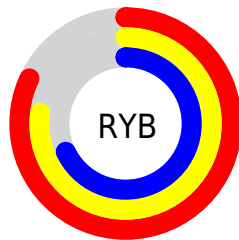
The Yxy color $52.5777, 0.3417, 0.3460$ is a light color, and the websafe version is hex `CCCCCC`. A complement of this color would be $52.6520, 0.2868, 0.3114$, and the grayscale version is $53.1834, 0.3127, 0.3290$.

A 20% lighter version of the original color is $91.6185, 0.3292, 0.3437$, and $25.6031, 0.3488, 0.3502$ is the 20% darker color. If you saturate the color by 10%, you get $46.6949, 0.3628, 0.3568$, and if you desaturate by 10%, it is $59.0587, 0.3235, 0.3356$.

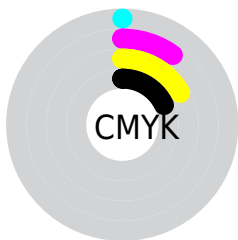
Distribution



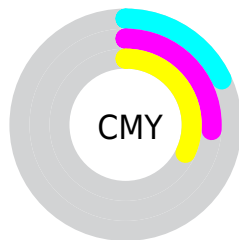
- Red (82%)
- Green (74%)
- Blue (68%)



- Red (82%)
- Yellow (77%)
- Blue (68%)



- Cyan (0%)
- Magenta (10%)
- Yellow (17%)
- Black (18%)



- Cyan (18%)
- Magenta (26%)
- Yellow (32%)

Brightness & Saturation Gradients


These gradients show how the Yxy color 52.5777, 0.3417, 0.3460 changes by changing the brightness by 10 percent. The first figure shows a shift by +10% for each color and the second figure -10%.


Similar to the brightness gradients but the following saturation gradients show a change of the Yxy color 52.5777, 0.3417, 0.3460 by changing the saturation by 10% instead.


 52.5777, 0.3417,
0.3460

 52.5777, 0.3417,
0.3460


396.6628, 0.3274,
0.3378

 37.4658, 0.3452,
0.3480


 93.9827, 0.3366,
0.3431

 25.5683, 0.3496,
0.3504


121.0445, 0.3346,
0.3420

 16.5010, 0.3555,
0.3536


152.8584, 0.3330,
0.3410

 9.8793, 0.3635,
0.3579

189.8087, 0.3316,
0.3402

 5.3190, 0.3753,
0.3639

232.2800, 0.3303,
0.3395

 2.4356, 0.3939,
0.3729

280.6565, 0.3292,

 0.8441, 0.4634,

0.3389

0.4197

335.3226, 0.3283,
0.3383

0.0000, 0.0000,
0.0000

52.5777, 0.3417,
0.3460

52.5777, 0.3417,
0.3460

46.6949, 0.3628,
0.3568

59.0587, 0.3235,
0.3356

41.3855, 0.3871,
0.3678

66.1476, 0.3079,
0.3259

36.6333, 0.4145,
0.3782

73.8631, 0.2946,
0.3169

32.4185, 0.4447,
0.3873

82.0509, 0.2846,
0.3113

28.7202, 0.4768,
0.3940

89.6262, 0.2853,
0.3245

■ 25.5154, 0.5089,
0.3969

■ 92.2999, 0.2855,
0.3289

■ 22.7793, 0.5387,
0.3948

■ 20.4830, 0.5637,
0.3875

■ 19.8224, 0.5712,
0.3847

Harmonies

Analogous

The Analogous color harmony consists of three colors that are next to each other on the color wheel.



52.5777, 0.3403, 0.3342



52.5777, 0.3417, 0.3460



52.5777, 0.3351, 0.3537

Triad

The Triadic color harmony groups three colors that are evenly spaced from another and form a triangle on the color wheel.



52.5777, 0.3417, 0.3460



52.5777, 0.2943, 0.3365



52.5777, 0.3024, 0.3046

Complementary

The Complementary color scheme is a pair of colors which are on the opposite of each other on the color wheel.



52.5777, 0.3417, 0.3460



52.6520, 0.2868, 0.3114

Split Complementary

Split-complementary colors differ from the complementary color scheme. The scheme consists of three colors, the original color and two neighbors of the complement color.



52.5777, 0.2905, 0.3047



52.5777, 0.3417, 0.3460



52.5777, 0.2859, 0.3228

Square

The Square scheme is like the rectangle color scheme, but the four colors are evenly spaced on the color wheel.



52.5777, 0.3417, 0.3460



52.5777, 0.3076, 0.3484



52.5777, 0.2845, 0.3112



52.5777, 0.3173, 0.3107

Rectangle

The Rectangle color scheme consists of four colors that form a rectangle on the color wheel.



52.5777, 0.3417, 0.3460



52.5777, 0.3272, 0.3552



52.5777, 0.2845, 0.3112



52.5777, 0.2979, 0.3039

Sweetspot

The Sweet Spot groups the original color and five complimentary colors.



52.5801, 0.3417, 0.3460



94.4172, 0.3207, 0.3339



47.8005, 0.3257, 0.3032



20.0455, 0.3219, 0.3347



0.0000, 0.0000, 0.0000



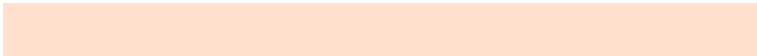
21.4041, 0.3127, 0.3290

Same Dimension

The Same Dimension uses a secret algorithm to generate beautiful new colors.



52.5801, 0.3417, 0.3460



79.1307, 0.3487, 0.3497



60.2524, 0.3385, 0.3657



12.5721, 0.3281, 0.3383



12.3989, 0.5686, 0.3867



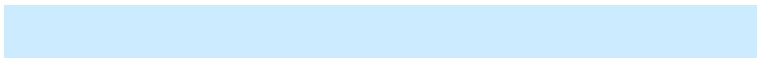
0.8468, 0.5351, 0.4133

Inverse Universe

The Inverse Universe completely reimagines the original color for something new.



52.6520, 0.2868, 0.3114



79.2617, 0.2813, 0.3073



45.4802, 0.2858, 0.2894



12.5816, 0.2983, 0.3195



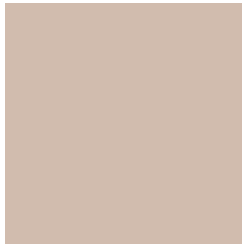
12.1603, 0.1871, 0.1935



0.8329, 0.1947, 0.2210

Previews

White Background



This preview shows how the Yxy color 52.5777, 0.3417, 0.3460 looks on a white background.

Color Contrast Check

Large Text (above 18pt) WCAG AA × Fail

Any Text WCAG AA × Fail

Large Text (above 18pt) WCAG AAA × Fail

Any Text WCAG AAA × Fail

Black Background



This preview shows how the Yxy color 52.5777, 0.3417, 0.3460 looks on a black background.

Color Contrast Check

Large Text (above 18pt) WCAG AA ✓ Pass

Any Text WCAG AA ✓ Pass

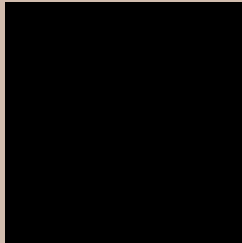
Large Text (above 18pt) WCAG AAA ✓ Pass

Any Text WCAG AAA ✓ Pass

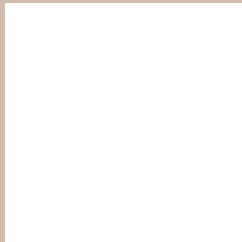
If you want to check with other color combinations, try the [Color Contrast Checker](#).

Yxy 52.5777, 0.3417, 0.3460

Background



This preview shows how black text looks on a background with the Yxy color 52.5777, 0.3417, 0.3460.



This preview shows how white text looks on a background with the Yxy color 52.5777, 0.3417, 0.3460.

Color Blindness Simulation

Color vision deficiency is a very complex topic, and I could not describe the different causes any better than Wikipedia does, so if you want to learn more, you should check out their [article about color blindness](#).

Dichromacy



Original Color

52.5777, 0.3417, 0.3460

Protanopia

52.5383, 0.3310, 0.3476

Deuteranopia

52.5448, 0.3485, 0.3409



Tritanopia

52.4015, 0.3245, 0.3114

Trichromacy



Original Color

52.5777, 0.3417, 0.3460

Protanomaly

52.6186, 0.3353, 0.3475

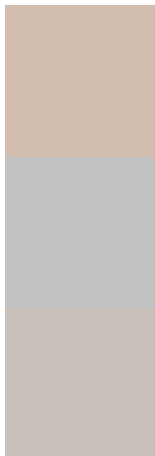
Deuteranomaly

52.5091, 0.3456, 0.3422

Tritanomaly

52.2645, 0.3308, 0.3231

Monochromacy



Original Color

52.5777, 0.3417, 0.3460

Achromatopsia

53.3276, 0.3127, 0.3290

Achromatomaly

52.9489, 0.3231, 0.3352

CSS Examples

Text

The CSS property to change the color of the text to Yxy 52.5777, 0.3417, 0.3460 is called "color". The color property can be set on classes, ids or directly on the HTML element.

This example shows how text in the color `rgb(209, 188, 174)` looks like.

```
.text, #text, p{  
    color:rgb(209, 188, 174)  
}
```

If you want to add a text shadow in that color use the text-shadow property, you can generate a text shadow directly with our [CSS Text Shadow Generator](#).

Here you see how black text with a 4 pixel rgb(209, 188, 174) colored shadow looks like.

```
.shadow{ text-shadow: 4px 4px 2px rgb(209, 188, 174) }
```

Border

The CSS property to change the border of an element to Yxy 52.5777, 0.3417, 0.3460 is called "border". The border property can be set on classes, ids or directly on the HTML element.

This example shows the color as border, it can be applied via the CSS property "border" or "border-color".

```
.border, #border, table{ border:4px solid rgb(209, 188, 174) }
```

If only the border color should be changed use the property `border-color`.

```
.border{ border-color:rgb(209, 188, 174) }
```

If you want to add a box shadow in that color use:

Here you see how a box with a 4 pixel `rgb(209, 188, 174)` colored shadow looks like.

```
.boxshadow{ -moz-box-shadow:4px 4px 4px  
4px rgb(209, 188, 174); -webkit-box-  
shadow:4px 4px 4px 4px rgb(209, 188, 174);  
box-shadow:4px 4px 4px 4px rgb(209, 188,  
174) }
```


Background

The CSS property to change the background color of an element to Yxy 52.5777, 0.3417, 0.3460 is called "background". The background property can be set on classes, ids or directly on the HTML element.

```
.background, #background, body{  
background: rgb(209, 188, 174) }
```

If only the background color should be changed can be used:

```
.background{ background-color: rgb(209,  
188, 174) }
```

This example shows the color as background, it is applied via the CSS property "background".

To optimize and compress your CSS code, you can use our [online CSS compressor and optimizer](#) based on csstidy. If you want to create a linear or radial gradient as background or border, check our [CSS Gradient Generator](#).

Hey! You found this booklet interesting? Support Converting Colors with the new Membership Option!

The pro membership hides all ads, plus gives you double the colors in the color bucket, and more awesome pro features!

[Learn more, Memberships starting at \\$2.50/m!](#)

**Follow me
on Twitter!**

@ConvertingColor