

Converting Colors

$Yxy(52.6092, 0.3334, 0.3363)$

Have a look what the booklet for
Yxy(52.6092, 0.3334, 0.3363)
contains.

Yxy(52.6092, 0.3334, 0.3363)	3
Conversions	4
Details	6
Harmonies	12
Previews	24
Color Blindness Simulation	27
CSS Examples	30

Color

Yxy(52.6092, 0.3334, 0.3363)

Conversions

Conversions Part 1

Format	Color
Hex	CFBCB6
RGB	207, 188, 182
RGB Percent	81%, 74%, 71%
CMY	0.1883, 0.2627, 0.2862
CMYK	0.00, 0.09, 0.12, 0.19
HSL	14°, 21%, 76%
HSV	14°, 12%, 81%
XYZ	52.1555, 52.6092, 51.6706
YIQ	192.9970, 13.2500, 2.1620

Conversions

Conversions Part 2

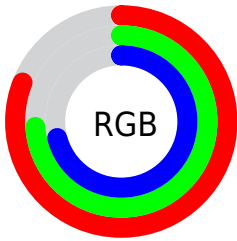
Format	Color
R _Y B	207, 190, 182
Decimal	13614262
CIE Lab	77.64, 5.71, 5.45
CIE LCh	78, 7.896, 43.693
Yxy	52.6092, 0.3334, 0.3363
Android (android.graphics.Color)	4291804342 (0xFFCFBCB6)
YUV	192.9970, -5.4215, 12.2806
Hunter-Lab	72.5322, 1.4222, 8.5354

Details

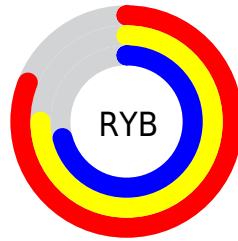
The Yxy color **52.6092, 0.3334, 0.3363** is a light color, and the websafe version is hex **CCCCCC**. A complement of this color would be **56.2176, 0.2942, 0.3216**, and the grayscale version is **53.3536, 0.3127, 0.3290**.

A 20% lighter version of the original color is **92.1344, 0.3236, 0.3349**, and **25.6852, 0.3398, 0.3388** is the 20% darker color. If you saturate the color by 10%, you get **45.4596, 0.3544, 0.3428**, and if you desaturate by 10%, it is **60.6224, 0.3159, 0.3302**.

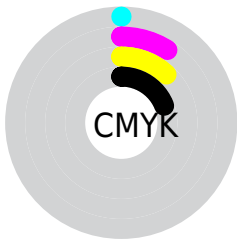
Distribution



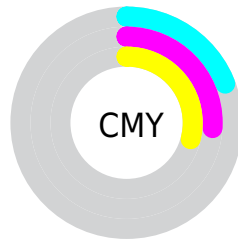
- Red (81%)
- Green (74%)
- Blue (71%)



- Red (81%)
- Yellow (75%)
- Blue (71%)



- Cyan (0%)
- Magenta (9%)
- Yellow (12%)
- Black (19%)




- Cyan (19%)
- Magenta (26%)
- Yellow (29%)

Brightness & Saturation Gradients


These gradients show how the Yxy color 52.6092, 0.3334, 0.3363 changes by changing the brightness by 10 percent. The first figure shows a shift by +10% for each color and the second figure -10%.


Similar to the brightness gradients but the following saturation gradients show a change of the Yxy color 52.6092, 0.3334, 0.3363 by changing the saturation by 10% instead.

 52.6092, 0.3334,
0.3363

 52.6092, 0.3334,
0.3363


396.7840, 0.3232,
0.3328

 37.4909, 0.3359,
0.3371


 94.0291, 0.3297,
0.3351

 25.5878, 0.3391,
0.3382


121.0994, 0.3284,
0.3346

 16.5155, 0.3433,
0.3395


152.9225, 0.3272,
0.3342

 9.8897, 0.3490,
0.3413

189.8829, 0.3262,
0.3338

 5.3259, 0.3575,
0.3438

232.3648, 0.3253,
0.3335

 2.4397, 0.3710,
0.3476

280.7527, 0.3245,

 0.8462, 0.4061,

0.3333

0.3625

335.4309, 0.3238,
0.3330

0.0000, 0.0000,
0.0000

52.6092, 0.3334,
0.3363

52.6092, 0.3334,
0.3363

45.4596, 0.3544,
0.3428

60.6224, 0.3159,
0.3302

39.1376, 0.3794,
0.3495

69.5196, 0.3014,
0.3246

33.6150, 0.4089,
0.3560

79.3295, 0.2892,
0.3194

28.8595, 0.4430,
0.3618

89.4291, 0.2841,
0.3247

24.8363, 0.4809,
0.3661

92.0023, 0.2843,
0.3289

■ 21.5078, 0.5207,
0.3677

■ 18.8331, 0.5589,
0.3657

■ 16.7664, 0.5912,
0.3597

■ 15.5176, 0.6110,
0.3531

Harmonies

Analogous

The Analogous color harmony consists of three colors that are next to each other on the color wheel.



52.6092, 0.3290, 0.3271



52.6092, 0.3334, 0.3363



52.6092, 0.3322, 0.3438

Triad

The Triadic color harmony groups three colors that are evenly spaced from another and form a triangle on the color wheel.



52.6092, 0.3334, 0.3363



52.6092, 0.3052, 0.3398



52.6092, 0.2997, 0.3110

Complementary

The Complementary color scheme is a pair of colors which are on the opposite of each other on the color wheel.



52.6092, 0.3334, 0.3363



56.2176, 0.2942, 0.3216

Split Complementary

Split-complementary colors differ from the complementary color scheme. The scheme consists of three colors, the original color and two neighbors of the complement color.



52.6092, 0.2936, 0.3140



52.6092, 0.3334, 0.3363



52.6092, 0.2967, 0.3306

Square

The Square scheme is like the rectangle color scheme, but the four colors are evenly spaced on the color wheel.



52.6092, 0.3334, 0.3363



52.6092, 0.3157, 0.3460



52.6092, 0.2925, 0.3212



52.6092, 0.3094, 0.3127

Rectangle

The Rectangle color scheme consists of four colors that form a rectangle on the color wheel.



52.6092, 0.3334, 0.3363



52.6092, 0.3283, 0.3467



52.6092, 0.2925, 0.3212



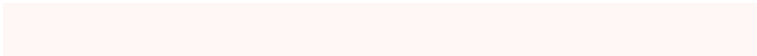
52.6092, 0.2972, 0.3115

Sweetspot

The Sweet Spot groups the original color and five complimentary colors.



52.6115, 0.3334, 0.3363



94.5143, 0.3192, 0.3314



50.9498, 0.3187, 0.3063



20.0147, 0.3204, 0.3318



0.0000, 0.0000, 0.0000



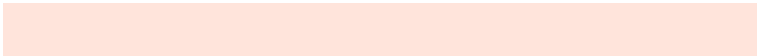
21.4041, 0.3127, 0.3290

Same Dimension

The Same Dimension uses a secret algorithm to generate beautiful new colors.



52.6115, 0.3334, 0.3363



81.8065, 0.3375, 0.3376



58.0984, 0.3316, 0.3509



12.2626, 0.3285, 0.3346



9.9031, 0.6087, 0.3549



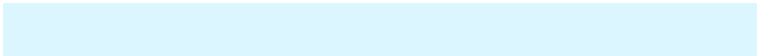
0.6800, 0.5720, 0.3840

Inverse Universe

The Inverse Universe completely reimagines the original color for something new.



56.2176, 0.2942, 0.3216



88.4991, 0.2910, 0.3202



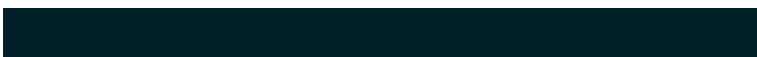
50.7063, 0.2939, 0.3061



12.9060, 0.2983, 0.3233



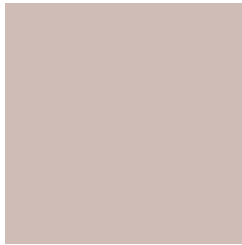
18.2482, 0.2028, 0.2500



1.1389, 0.2073, 0.2662

Previews

White Background



This preview shows how the Yxy color 52.6092, 0.3334, 0.3363 looks on a white background.

Color Contrast Check

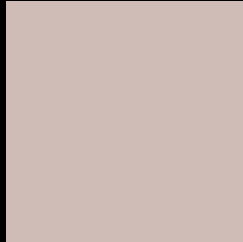
Large Text (above 18pt) WCAG AA × Fail

Any Text WCAG AA × Fail

Large Text (above 18pt) WCAG AAA × Fail

Any Text WCAG AAA × Fail

Black Background



This preview shows how the Yxy color 52.6092, 0.3334, 0.3363 looks on a black background.

Color Contrast Check

Large Text (above 18pt) WCAG AA ✓ Pass

Any Text WCAG AA ✓ Pass

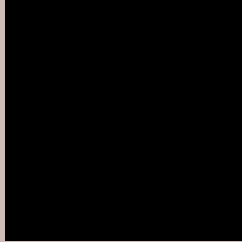
Large Text (above 18pt) WCAG AAA ✓ Pass

Any Text WCAG AAA ✓ Pass

If you want to check with other color combinations, try the [Color Contrast Checker](#).

Yxy 52.6092, 0.3334, 0.3363

Background



This preview shows how black text looks on a background with the Yxy color 52.6092, 0.3334, 0.3363.



This preview shows how white text looks on a background with the Yxy color 52.6092, 0.3334, 0.3363.

Color Blindness Simulation

Color vision deficiency is a very complex topic, and I could not describe the different causes any better than Wikipedia does, so if you want to learn more, you should check out their [article about color blindness](#).

Dichromacy



Original Color

52.6092, 0.3334, 0.3363

Protanopia

52.5926, 0.3230, 0.3377

Deuteranopia

52.4130, 0.3391, 0.3315



Tritanopia

52.4234, 0.3211, 0.3113

Trichromacy



Original Color

52.6092, 0.3334, 0.3363

Protanomaly

52.6633, 0.3273, 0.3376

Deuteranomaly

52.3856, 0.3364, 0.3327

Tritanomaly

52.3780, 0.3257, 0.3207

Monochromacy



Original Color

52.6092, 0.3334, 0.3363

Achromatopsia

53.3276, 0.3127, 0.3290

Achromatomaly

52.9415, 0.3200, 0.3315

CSS Examples

Text

The CSS property to change the color of the text to Yxy 52.6092, 0.3334, 0.3363 is called "color". The color property can be set on classes, ids or directly on the HTML element.

This example shows how text in the color `rgb(207, 188, 182)` looks like.

```
.text, #text, p{  
    color:rgb(207, 188, 182)  
}
```

If you want to add a text shadow in that color use the text-shadow property, you can generate a text shadow directly with our [CSS Text Shadow Generator](#).

Here you see how black text with a 4 pixel rgb(207, 188, 182) colored shadow looks like.

```
.shadow{ text-shadow: 4px 4px 2px rgb(207, 188, 182) }
```

Border

The CSS property to change the border of an element to Yxy 52.6092, 0.3334, 0.3363 is called "border". The border property can be set on classes, ids or directly on the HTML element.

This example shows the color as border, it can be applied via the CSS property "border" or "border-color".

```
.border, #border, table{ border:4px solid rgb(207, 188, 182) }
```

If only the border color should be changed use the property `border-color`.

```
.border{ border-color:rgb(207, 188, 182) }
```

If you want to add a box shadow in that color use:

Here you see how a box with a 4 pixel `rgb(207, 188, 182)` colored shadow looks like.

```
.boxshadow{ -moz-box-shadow:4px 4px 4px  
4px rgb(207, 188, 182); -webkit-box-  
shadow:4px 4px 4px 4px rgb(207, 188, 182);  
box-shadow:4px 4px 4px 4px rgb(207, 188,  
182) }
```


Background

The CSS property to change the background color of an element to Yxy 52.6092, 0.3334, 0.3363 is called "background". The background property can be set on classes, ids or directly on the HTML element.

```
.background, #background, body{  
background: rgb(207, 188, 182) }
```

If only the background color should be changed can be used:

```
.background{ background-color: rgb(207,  
188, 182) }
```

This example shows the color as background, it is applied via the CSS property "background".

To optimize and compress your CSS code, you can use our [online CSS compressor and optimizer](#) based on csstidy. If you want to create a linear or radial gradient as background or border, check our [CSS Gradient Generator](#).

Hey! You found this booklet interesting? Support Converting Colors with the new Membership Option!

The pro membership hides all ads, plus gives you double the colors in the color bucket, and more awesome pro features!

[Learn more, Memberships starting at \\$2.50/m!](#)

**Follow me
on Twitter!**

@ConvertingColor