

Converting Colors

Yxy(52.6346, 0.3367, 0.3206)

Have a look what the booklet for
Yxy(52.6346, 0.3367, 0.3206)
contains.

Yxy(52.5340, 0.3363, 0.3197)	3
<i>Conversions</i>	4
<i>Details</i>	6
<i>Harmonies</i>	12
<i>Previews</i>	24
<i>Color Blindness Simulation</i>	27
<i>CSS Examples</i>	30

Color

Yxy(52.5340, 0.3363, 0.3197)

Conversions

Conversions Part 1

Format	Color
Hex	DAB7BF
RGB	218, 183, 191
RGB Percent	85%, 72%, 75%
CMY	0.1449, 0.2824, 0.2509
CMYK	0.00, 0.16, 0.12, 0.14
HSL	346°, 32%, 79%
HSV	346°, 16%, 86%
XYZ	55.2618, 52.5340, 56.5270
YIQ	194.3770, 18.2920, 9.9080

Conversions

Conversions Part 2

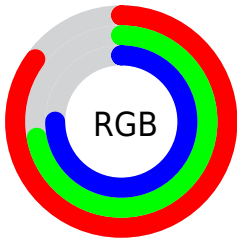
Format	Color
R _Y B	218, 183, 191
Decimal	14333887
CIE Lab	77.60, 13.87, 0.64
CIE LCh	78, 13.887, 2.625
Yxy	52.5340, 0.3363, 0.3197
Android (android.graphics.Color)	4292523967 (0xFFDAB7BF)
YUV	194.3770, -1.6649, 20.7174
Hunter-Lab	72.4803, 9.2546, 4.4963

Details

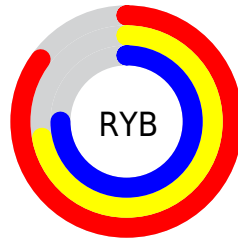
The Yxy color $52.5340, 0.3363, 0.3197$ is a light color, and the websafe version is hex `FFCCCC`. A complement of this color would be $64.8849, 0.2934, 0.3385$, and the grayscale version is $54.1895, 0.3127, 0.3290$.

A 20% lighter version of the original color is $89.7084, 0.3184, 0.3213$, and $25.5868, 0.3426, 0.3167$ is the 20% darker color. If you saturate the color by 10%, you get $43.5301, 0.3555, 0.3135$, and if you desaturate by 10%, it is $63.0209, 0.3207, 0.3256$.

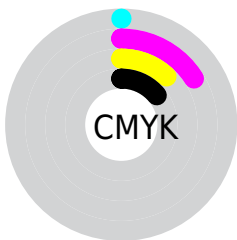
Distribution



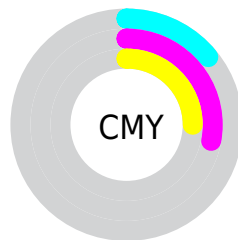
- Red (85%)
- Green (72%)
- Blue (75%)



- Red (85%)
- Yellow (72%)
- Blue (75%)



- Cyan (0%)
- Magenta (16%)
- Yellow (12%)
- Black (14%)





- Cyan (14%)
- Magenta (28%)
- Yellow (25%)

Brightness & Saturation Gradients


These gradients show how the Yxy color 52.5340, 0.3363, 0.3197 changes by changing the brightness by 10 percent. The first figure shows a shift by +10% for each color and the second figure -10%.


Similar to the brightness gradients but the following saturation gradients show a change of the Yxy color 52.5340, 0.3363, 0.3197 by changing the saturation by 10% instead.


 52.5340, 0.3363,
0.3197

 52.5340, 0.3363,
0.3197


396.4947, 0.3247,
0.3243

 37.4309, 0.3391,
0.3186


 93.9183, 0.3321,
0.3214

 25.5413, 0.3427,
0.3171


120.9683, 0.3306,
0.3220

 16.4808, 0.3475,
0.3152


152.7693, 0.3292,
0.3225

 9.8650, 0.3539,
0.3126

189.7059, 0.3281,
0.3230

 5.3095, 0.3634,
0.3088

232.1623, 0.3271,
0.3234

 2.4300, 0.3785,
0.3027

280.5230, 0.3262,

 0.8413, 0.4068,

0.3237

0.2914

335.1723, 0.3254,
0.3240

0.0000, 1.0000,
0.0000

0.0000, 0.0000,
0.0000

52.5340, 0.3363,
0.3197

52.5340, 0.3363,
0.3197

43.5301, 0.3555,
0.3135

63.0209, 0.3207,
0.3256

35.9352, 0.3791,
0.3073

75.0462, 0.3081,
0.3311

29.6799, 0.4076,
0.3014

88.6712, 0.2978,
0.3362

24.6856, 0.4411,
0.2966

93.6521, 0.2906,
0.3289

■ 20.8660, 0.4790,
0.2938

■ 18.1234, 0.5192,
0.2939

■ 16.3445, 0.5580,
0.2979

■ 15.3886, 0.5908,
0.3056

■ 15.1419, 0.6018,
0.3089

Harmonies

Analogous

The Analogous color harmony consists of three colors that are next to each other on the color wheel.



52.5340, 0.3188, 0.3064



52.5340, 0.3363, 0.3197



52.5340, 0.3475, 0.3356

Triad

The Triadic color harmony groups three colors that are evenly spaced from another and form a triangle on the color wheel.



52.5340, 0.3363, 0.3197



52.5340, 0.3247, 0.3614



52.5340, 0.2776, 0.3064

Complementary

The Complementary color scheme is a pair of colors which are on the opposite of each other on the color wheel.



52.5340, 0.3363, 0.3197



64.8849, 0.2934, 0.3385

Split Complementary

Split-complementary colors differ from the complementary color scheme. The scheme consists of three colors, the original color and two neighbors of the complement color.



52.5340, 0.2791, 0.3207



52.5340, 0.3363, 0.3197



52.5340, 0.3059, 0.3533

Square

The Square scheme is like the rectangle color scheme, but the four colors are evenly spaced on the color wheel.



52.5340, 0.3363, 0.3197



52.5340, 0.3406, 0.3600



52.5340, 0.2894, 0.3381



52.5340, 0.2851, 0.2986

Rectangle

The Rectangle color scheme consists of four colors that form a rectangle on the color wheel.



52.5340, 0.3363, 0.3197



52.5340, 0.3497, 0.3458



52.5340, 0.2894, 0.3381



52.5340, 0.2771, 0.3106

Sweetspot

The Sweet Spot groups the original color and five complimentary colors.



52.5363, 0.3363, 0.3197



91.5162, 0.3193, 0.3262



52.6077, 0.3079, 0.2886



19.3427, 0.3203, 0.3258



0.0000, 0.0000, 0.0000



21.4041, 0.3127, 0.3290

Same Dimension

The Same Dimension uses a secret algorithm to generate beautiful new colors.



52.5363, 0.3363, 0.3197



70.7114, 0.3418, 0.3178



56.1774, 0.3413, 0.3400



13.1001, 0.3256, 0.3237



9.0812, 0.5983, 0.3070



0.6016, 0.5520, 0.2815

Inverse Universe

The Inverse Universe completely reimagines the original color for something new.



52.5363, 0.3363, 0.3197



70.7114, 0.3418, 0.3178



60.5815, 0.2880, 0.3178



13.1001, 0.3256, 0.3237



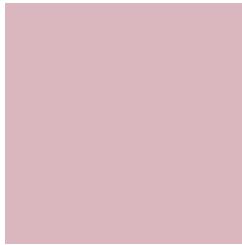
9.0812, 0.5983, 0.3070



0.6016, 0.5520, 0.2815

Previews

White Background



This preview shows how the Yxy color 52.5340, 0.3363, 0.3197 looks on a white background.

Color Contrast Check

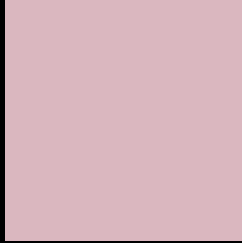
Large Text (above 18pt) WCAG AA × Fail

Any Text WCAG AA × Fail

Large Text (above 18pt) WCAG AAA × Fail

Any Text WCAG AAA × Fail

Black Background



This preview shows how the Yxy color 52.5340, 0.3363, 0.3197 looks on a black background.

Color Contrast Check

Large Text (above 18pt) WCAG AA ✓ Pass

Any Text WCAG AA ✓ Pass

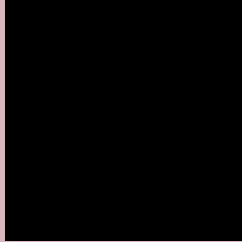
Large Text (above 18pt) WCAG AAA ✓ Pass

Any Text WCAG AAA ✓ Pass

If you want to check with other color combinations, try the [Color Contrast Checker](#).

Yxy 52.5340, 0.3363, 0.3197

Background



This preview shows how black text looks on a background with the Yxy color 52.5340, 0.3363, 0.3197.



This preview shows how white text looks on a background with the Yxy color 52.5340, 0.3363, 0.3197.

Color Blindness Simulation

Color vision deficiency is a very complex topic, and I could not describe the different causes any better than Wikipedia does, so if you want to learn more, you should check out their [article about color blindness](#).

Dichromacy



Original Color

52.5340, 0.3363, 0.3197

Protanopia

52.7165, 0.3114, 0.3229

Deuteranopia

52.6844, 0.3307, 0.3243



Tritanopia

52.5015, 0.3331, 0.3128

Trichromacy



Original Color

52.5340, 0.3363, 0.3197

Protanomaly

52.5580, 0.3205, 0.3218

Deuteranomaly

52.7118, 0.3334, 0.3232

Tritanomaly

52.4110, 0.3348, 0.3151

Monochromacy



Original Color

52.5340, 0.3363, 0.3197

Achromatopsia

53.9479, 0.3127, 0.3290

Achromatomaly

53.3737, 0.3211, 0.3254

CSS Examples

Text

The CSS property to change the color of the text to Yxy 52.5340, 0.3363, 0.3197 is called "color". The color property can be set on classes, ids or directly on the HTML element.

This example shows how text in the color `rgb(218, 183, 191)` looks like.

```
.text, #text, p{  
    color:rgb(218, 183, 191)  
}
```

If you want to add a text shadow in that color use the text-shadow property, you can generate a text shadow directly with our [CSS Text Shadow Generator](#).

Here you see how black text with a 4 pixel rgb(218, 183, 191) colored shadow looks like.

```
.shadow{ text-shadow: 4px 4px 2px rgb(218, 183, 191) }
```

Border

The CSS property to change the border of an element to Yxy 52.5340, 0.3363, 0.3197 is called "border". The border property can be set on classes, ids or directly on the HTML element.

This example shows the color as border, it can be applied via the CSS property "border" or "border-color".

```
.border, #border, table{ border:4px solid rgb(218, 183, 191) }
```

If only the border color should be changed use the property `border-color`.

```
.border{ border-color:rgb(218, 183, 191) }
```

If you want to add a box shadow in that color use:

Here you see how a box with a 4 pixel `rgb(218, 183, 191)` colored shadow looks like.

```
.boxshadow{ -moz-box-shadow:4px 4px 4px  
4px rgb(218, 183, 191); -webkit-box-  
shadow:4px 4px 4px 4px rgb(218, 183, 191);  
box-shadow:4px 4px 4px 4px rgb(218, 183,  
191) }
```


Background

The CSS property to change the background color of an element to Yxy 52.5340, 0.3363, 0.3197 is called "background". The background property can be set on classes, ids or directly on the HTML element.

```
.background, #background, body{  
background: rgb(218, 183, 191) }
```

If only the background color should be changed can be used:

```
.background{ background-color: rgb(218,  
183, 191) }
```

This example shows the color as background, it is applied via the CSS property "background".

To optimize and compress your CSS code, you can use our [online CSS compressor and optimizer](#) based on csstidy. If you want to create a linear or radial gradient as background or border, check our [CSS Gradient Generator](#).

Hey! You found this booklet interesting? Support Converting Colors with the new Membership Option!

The pro membership hides all ads, plus gives you double the colors in the color bucket, and more awesome pro features!

[Learn more, Memberships starting at \\$2.50/m!](#)

**Follow me
on Twitter!**

@ConvertingColor