

Converting Colors

$Yxy(52.6671, 0.3379, 0.3412)$

Have a look what the booklet for
Yxy(52.6671, 0.3379, 0.3412)
contains.

Yxy(52.5907, 0.3375, 0.3412)	3
Conversions	4
Details	6
Harmonies	12
Previews	24
Color Blindness Simulation	27
CSS Examples	30

Color

Yxy(52.5907, 0.3375, 0.3412)

Conversions

Conversions Part 1

Format	Color
Hex	D0BCB2
RGB	208, 188, 178
RGB Percent	82%, 74%, 70%
CMY	0.1845, 0.2627, 0.3020
CMYK	0.00, 0.10, 0.14, 0.18
HSL	20°, 24%, 76%
HSV	20°, 14%, 82%
XYZ	52.0204, 52.5907, 49.5234
YIQ	192.8400, 15.1300, 1.1300

Conversions

Conversions Part 2

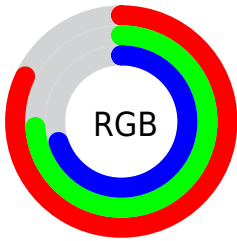
Format	Color
R _Y B	208, 193, 178
Decimal	13679794
CIE Lab	77.63, 5.40, 7.63
CIE LCh	78, 9.347, 54.687
Yxy	52.5907, 0.3375, 0.3412
Android (android.graphics.Color)	4291869874 (0xFFD0BCB2)
YUV	192.8400, -7.3161, 13.2953
Hunter-Lab	72.5194, 1.1344, 10.2746

Details

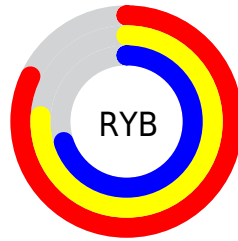
The Yxy color **52.5907, 0.3375, 0.3412** is a light color, and the websafe version is hex **CCCCCC**. A complement of this color would be **54.3671, 0.2906, 0.3165**, and the grayscale version is **53.2645, 0.3127, 0.3290**.

A 20% lighter version of the original color is **91.9019, 0.3260, 0.3388**, and **25.5809, 0.3443, 0.3453** is the 20% darker color. If you saturate the color by 10%, you get **46.1897, 0.3585, 0.3503**, and if you desaturate by 10%, it is **59.6895, 0.3197, 0.3326**.

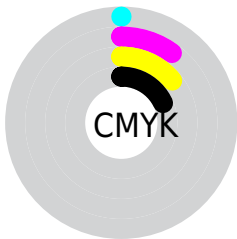
Distribution



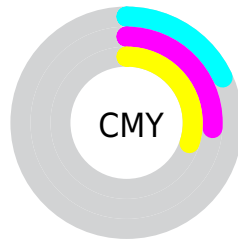
- Red (82%)
- Green (74%)
- Blue (70%)



- Red (82%)
- Yellow (76%)
- Blue (70%)



- Cyan (0%)
- Magenta (10%)
- Yellow (14%)
- Black (18%)



- Cyan (18%)
- Magenta (26%)
- Yellow (30%)

Brightness & Saturation Gradients

These gradients show how the Yxy color 52.5907, 0.3375, 0.3412 changes by changing the brightness by 10 percent. The first figure shows a shift by +10% for each color and the second figure -10%.

Similar to the brightness gradients but the following saturation gradients show a change of the Yxy color 52.5907, 0.3375, 0.3412 by changing the saturation by 10% instead.

■ 52.5907, 0.3375,
0.3412

■ 52.5907, 0.3375,
0.3412

396.7128, 0.3253,
0.3353

■ 37.4761, 0.3405,
0.3426

■ 94.0018, 0.3331,
0.3391

■ 25.5763, 0.3443,
0.3444

121.0671, 0.3314,
0.3383

■ 16.5070, 0.3493,
0.3466

152.8849, 0.3300,
0.3376

■ 9.8836, 0.3562,
0.3497

189.8393, 0.3288,
0.3371

■ 5.3219, 0.3663,
0.3540

232.3150, 0.3278,
0.3365

■ 2.4373, 0.3824,
0.3605

280.6962, 0.3268,

■ 0.8450, 0.4324,

0.3361

0.3893

335.3673, 0.3260,
0.3357

0.0000, 0.0000,
0.0000

52.5907, 0.3375,
0.3412

52.5907, 0.3375,
0.3412

46.1897, 0.3585,
0.3503

59.6895, 0.3197,
0.3326

40.4578, 0.3830,
0.3595

67.4997, 0.3046,
0.3246

35.3750, 0.4113,
0.3684

76.0432, 0.2918,
0.3172

30.9169, 0.4431,
0.3764

84.9349, 0.2842,
0.3168

27.0581, 0.4777,
0.3822

92.1428, 0.2849,
0.3289

■ 23.7710, 0.5131,
0.3847

■ 21.0253, 0.5467,
0.3828

■ 18.7874, 0.5751,
0.3759

■ 17.7368, 0.5887,
0.3707

Harmonies

Analogous

The Analogous color harmony consists of three colors that are next to each other on the color wheel.



52.5907, 0.3346, 0.3307



52.5907, 0.3375, 0.3412



52.5907, 0.3336, 0.3487

Triad

The Triadic color harmony groups three colors that are evenly spaced from another and form a triangle on the color wheel.



52.5907, 0.3375, 0.3412



52.5907, 0.2996, 0.3381



52.5907, 0.3012, 0.3079

Complementary

The Complementary color scheme is a pair of colors which are on the opposite of each other on the color wheel.



52.5907, 0.3375, 0.3412



54.3671, 0.2906, 0.3165

Split Complementary

Split-complementary colors differ from the complementary color scheme. The scheme consists of three colors, the original color and two neighbors of the complement color.



52.5907, 0.2921, 0.3094



52.5907, 0.3375, 0.3412



52.5907, 0.2913, 0.3266

Square

The Square scheme is like the rectangle color scheme, but the four colors are evenly spaced on the color wheel.



52.5907, 0.3375, 0.3412



52.5907, 0.3116, 0.3471



52.5907, 0.2886, 0.3161



52.5907, 0.3135, 0.3118

Rectangle

The Rectangle color scheme consists of four colors that form a rectangle on the color wheel.



52.5907, 0.3375, 0.3412



52.5907, 0.3277, 0.3509



52.5907, 0.2886, 0.3161



52.5907, 0.2977, 0.3077

Sweetspot

The Sweet Spot groups the original color and five complimentary colors.



52.5930, 0.3375, 0.3412



95.1076, 0.3191, 0.3323



49.3158, 0.3224, 0.3052



20.1645, 0.3203, 0.3329



0.0000, 0.0000, 0.0000



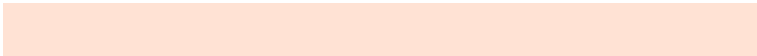
21.4041, 0.3127, 0.3290

Same Dimension

The Same Dimension uses a secret algorithm to generate beautiful new colors.



52.5930, 0.3375, 0.3412



80.4783, 0.3430, 0.3437



59.3089, 0.3350, 0.3587



12.4458, 0.3282, 0.3368



11.2204, 0.5862, 0.3728



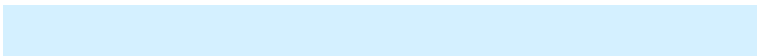
0.7724, 0.5502, 0.4013

Inverse Universe

The Inverse Universe completely reimagines the original color for something new.



54.3671, 0.2906, 0.3165



83.7713, 0.2862, 0.3138



47.8763, 0.2899, 0.2974



12.7123, 0.2983, 0.3210



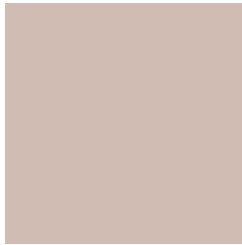
14.4152, 0.1935, 0.2165



0.9490, 0.1999, 0.2395

Previews

White Background



This preview shows how the Yxy color 52.5907, 0.3375, 0.3412 looks on a white background.

Color Contrast Check

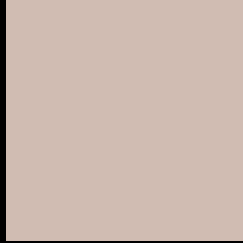
Large Text (above 18pt) WCAG AA × Fail

Any Text WCAG AA × Fail

Large Text (above 18pt) WCAG AAA × Fail

Any Text WCAG AAA × Fail

Black Background



This preview shows how the Yxy color 52.5907, 0.3375, 0.3412 looks on a black background.

Color Contrast Check

Large Text (above 18pt) WCAG AA ✓ Pass

Any Text WCAG AA ✓ Pass

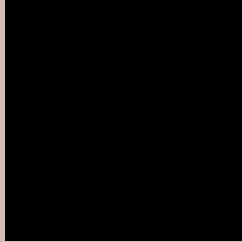
Large Text (above 18pt) WCAG AAA ✓ Pass

Any Text WCAG AAA ✓ Pass

If you want to check with other color combinations, try the [Color Contrast Checker](#).

Yxy 52.5907, 0.3375, 0.3412

Background



This preview shows how black text looks on a background with the Yxy color 52.5907, 0.3375, 0.3412.



This preview shows how white text looks on a background with the Yxy color 52.5907, 0.3375, 0.3412.

Color Blindness Simulation

Color vision deficiency is a very complex topic, and I could not describe the different causes any better than Wikipedia does, so if you want to learn more, you should check out their [article about color blindness](#).

Dichromacy



Original Color

52.5907, 0.3375, 0.3412

Protanopia

52.5627, 0.3270, 0.3426

Deuteranopia

52.3997, 0.3433, 0.3362



Tritanopia

52.6703, 0.3235, 0.3126

Trichromacy



Original Color

52.5907, 0.3375, 0.3412

Protanomaly

52.6381, 0.3313, 0.3425

Deuteranomaly

52.3695, 0.3405, 0.3375

Tritanomaly

52.5810, 0.3290, 0.3231

Monochromacy



Original Color

52.5907, 0.3375, 0.3412

Achromatopsia

53.3276, 0.3127, 0.3290

Achromatomaly

52.8982, 0.3207, 0.3327

CSS Examples

Text

The CSS property to change the color of the text to Yxy 52.5907, 0.3375, 0.3412 is called "color". The color property can be set on classes, ids or directly on the HTML element.

This example shows how text in the color `rgb(208, 188, 178)` looks like.

```
.text, #text, p{  
    color:rgb(208, 188, 178)  
}
```

If you want to add a text shadow in that color use the text-shadow property, you can generate a text shadow directly with our [CSS Text Shadow Generator](#).

Here you see how black text with a 4 pixel rgb(208, 188, 178) colored shadow looks like.

```
.shadow{ text-shadow: 4px 4px 2px rgb(208, 188, 178) }
```

Border

The CSS property to change the border of an element to Yxy 52.5907, 0.3375, 0.3412 is called "border". The border property can be set on classes, ids or directly on the HTML element.

This example shows the color as border, it can be applied via the CSS property "border" or "border-color".

```
.border, #border, table{ border:4px solid rgb(208, 188, 178) }
```

If only the border color should be changed use the property `border-color`.

```
.border{ border-color:rgb(208, 188, 178) }
```

If you want to add a box shadow in that color use:

Here you see how a box with a 4 pixel `rgb(208, 188, 178)` colored shadow looks like.

```
.boxshadow{ -moz-box-shadow:4px 4px 4px  
4px rgb(208, 188, 178); -webkit-box-  
shadow:4px 4px 4px 4px rgb(208, 188, 178);  
box-shadow:4px 4px 4px 4px rgb(208, 188,  
178) }
```


Background

The CSS property to change the background color of an element to Yxy 52.5907, 0.3375, 0.3412 is called "background". The background property can be set on classes, ids or directly on the HTML element.

```
.background, #background, body{  
background: rgb(208, 188, 178) }
```

If only the background color should be changed can be used:

```
.background{ background-color: rgb(208,  
188, 178) }
```

This example shows the color as background, it is applied via the CSS property "background".

To optimize and compress your CSS code, you can use our [online CSS compressor and optimizer](#) based on csstidy. If you want to create a linear or radial gradient as background or border, check our [CSS Gradient Generator](#).

Hey! You found this booklet interesting? Support Converting Colors with the new Membership Option!

The pro membership hides all ads, plus gives you double the colors in the color bucket, and more awesome pro features!

[Learn more, Memberships starting at \\$2.50/m!](#)

**Follow me
on Twitter!**

@ConvertingColor