

Converting Colors

$Y_{xy}(52.7299, 0.3354, 0.3323)$

Have a look what the booklet for
Yxy(52.7299, 0.3354, 0.3323)
contains.

Yxy(52.8502, 0.3354, 0.3327)	3
Conversions	4
Details	6
Harmonies	12
Previews	24
Color Blindness Simulation	27
CSS Examples	30

Color

Yxy(52.8502, 0.3354, 0.3327)

Conversions

Conversions Part 1

Format	Color
Hex	D3BBB8
RGB	211, 187, 184
RGB Percent	83%, 73%, 72%
CMY	0.1726, 0.2666, 0.2785
CMYK	0.00, 0.11, 0.13, 0.17
HSL	7°, 23%, 77%
HSV	7°, 13%, 83%
XYZ	53.2791, 52.8502, 52.7231
YIQ	193.8340, 15.2670, 4.1550

Conversions

Conversions Part 2

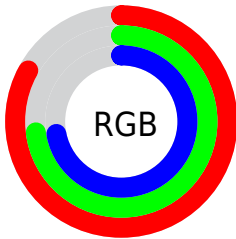
Format	Color
R _Y B	211, 187, 184
Decimal	13876152
CIE Lab	77.79, 8.01, 4.65
CIE LCh	78, 9.264, 30.121
Yxy	52.8502, 0.3354, 0.3327
Android (android.graphics.Color)	4292066232 (0xFFD3BBB8)
YUV	193.8340, -4.8482, 15.0546
Hunter-Lab	72.6981, 3.5975, 7.8896

Details

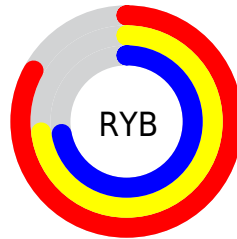
The Yxy color $52.8502, 0.3354, 0.3327$ is a light color, and the websafe version is hex `CCCCCC`. A complement of this color would be $59.9691, 0.2932, 0.3253$, and the grayscale version is $53.8670, 0.3127, 0.3290$.

A 20% lighter version of the original color is $91.6525, 0.3224, 0.3319$, and $25.7568, 0.3413, 0.3339$ is the 20% darker color. If you saturate the color by 10%, you get $44.6004, 0.3578, 0.3358$, and if you desaturate by 10%, it is $62.2720, 0.3172, 0.3298$.

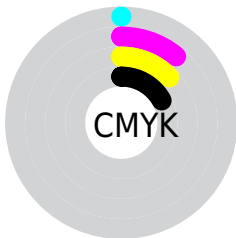
Distribution



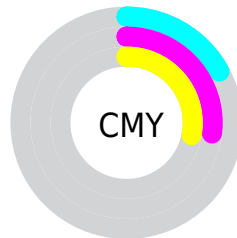
- Red (83%)
- Green (73%)
- Blue (72%)



- Red (83%)
- Yellow (73%)
- Blue (72%)



- Cyan (0%)
- Magenta (11%)
- Yellow (13%)
- Black (17%)





- Cyan (17%)
- Magenta (27%)
- Yellow (28%)

Brightness & Saturation Gradients


These gradients show how the Yxy color 52.8502, 0.3354, 0.3327 changes by changing the brightness by 10 percent. The first figure shows a shift by +10% for each color and the second figure -10%.


Similar to the brightness gradients but the following saturation gradients show a change of the Yxy color 52.8502, 0.3354, 0.3327 by changing the saturation by 10% instead.

 52.8502, 0.3354,
0.3327

 52.8502, 0.3354,
0.3327


397.7101, 0.3242,
0.3310

 37.6832, 0.3381,
0.3331


 94.3839, 0.3314,
0.3321

 25.7369, 0.3416,
0.3336


121.5194, 0.3299,
0.3319

 16.6269, 0.3462,
0.3342


153.4132, 0.3286,
0.3317

 9.9689, 0.3525,
0.3349

190.4496, 0.3275,
0.3315

 5.3783, 0.3617,
0.3360

233.0132, 0.3265,
0.3314

 2.4709, 0.3765,
0.3373

281.4882, 0.3257,

 0.8620, 0.4104,

0.3312

0.3444

336.2590, 0.3249,
0.3311

0.0000, 0.0000,
0.0000

52.8502, 0.3354,
0.3327

52.8502, 0.3354,
0.3327

44.6004, 0.3578,
0.3358

62.2720, 0.3172,
0.3298

37.4699, 0.3851,
0.3390

72.9018, 0.3023,
0.3271

31.4127, 0.4180,
0.3421

84.7828, 0.2902,
0.3246

26.3767, 0.4567,
0.3447

92.5860, 0.2866,
0.3289

22.3053, 0.4999,
0.3463

■ 19.1366, 0.5447,
0.3463

■ 16.8015, 0.5857,
0.3441

■ 15.2204, 0.6167,
0.3399

■ 14.4905, 0.6316,
0.3367

Harmonies

Analogous

The Analogous color harmony consists of three colors that are next to each other on the color wheel.



52.8502, 0.3276, 0.3220



52.8502, 0.3354, 0.3327



52.8502, 0.3370, 0.3427

Triad

The Triadic color harmony groups three colors that are evenly spaced from another and form a triangle on the color wheel.



52.8502, 0.3354, 0.3327



52.8502, 0.3093, 0.3456



52.8502, 0.2936, 0.3089

Complementary

The Complementary color scheme is a pair of colors which are on the opposite of each other on the color wheel.



52.8502, 0.3354, 0.3327



59.9691, 0.2932, 0.3253

Split Complementary

Split-complementary colors differ from the complementary color scheme. The scheme consists of three colors, the original color and two neighbors of the complement color.



52.8502, 0.2890, 0.3147



52.8502, 0.3354, 0.3327



52.8502, 0.2979, 0.3360

Square

The Square scheme is like the rectangle color scheme, but the four colors are evenly spaced on the color wheel.



52.8502, 0.3354, 0.3327



52.8502, 0.3218, 0.3505



52.8502, 0.2906, 0.3246



52.8502, 0.3034, 0.3084

Rectangle

The Rectangle color scheme consists of four colors that form a rectangle on the color wheel.



52.8502, 0.3354, 0.3327



52.8502, 0.3343, 0.3477



52.8502, 0.2906, 0.3246



52.8502, 0.2914, 0.3103

Sweetspot

The Sweet Spot groups the original color and five complimentary colors.



52.8525, 0.3354, 0.3327



93.7215, 0.3192, 0.3301



52.6824, 0.3163, 0.3007



19.8148, 0.3205, 0.3303



0.0000, 0.0000, 0.0000



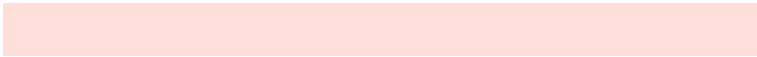
21.4041, 0.3127, 0.3290

Same Dimension

The Same Dimension uses a secret algorithm to generate beautiful new colors.



52.8525, 0.3354, 0.3327



78.0026, 0.3403, 0.3334



58.6958, 0.3334, 0.3481



12.0198, 0.3288, 0.3317



8.8227, 0.6300, 0.3380



0.5672, 0.6043, 0.3584

Inverse Universe

The Inverse Universe completely reimagines the original color for something new.



59.9691, 0.2932, 0.3253



90.7328, 0.2897, 0.3245



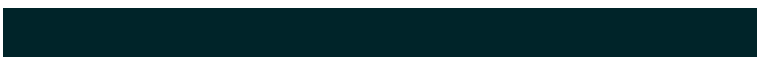
53.8179, 0.2928, 0.3091



13.1699, 0.2983, 0.3263



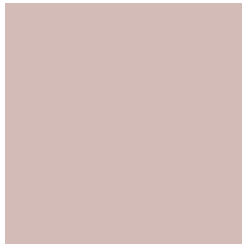
24.4364, 0.2148, 0.2934



1.4326, 0.2168, 0.3005

Previews

White Background



This preview shows how the Yxy color 52.8502, 0.3354, 0.3327 looks on a white background.

Color Contrast Check

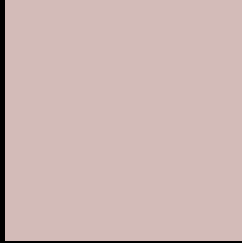
Large Text (above 18pt) WCAG AA × Fail

Any Text WCAG AA × Fail

Large Text (above 18pt) WCAG AAA × Fail

Any Text WCAG AAA × Fail

Black Background



This preview shows how the Yxy color 52.8502, 0.3354, 0.3327 looks on a black background.

Color Contrast Check

Large Text (above 18pt) WCAG AA ✓ Pass

Any Text WCAG AA ✓ Pass

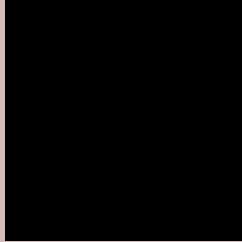
Large Text (above 18pt) WCAG AAA ✓ Pass

Any Text WCAG AAA ✓ Pass

If you want to check with other color combinations, try the [Color Contrast Checker](#).

Yxy 52.8502, 0.3354, 0.3327

Background



This preview shows how black text looks on a background with the Yxy color 52.8502, 0.3354, 0.3327.



This preview shows how white text looks on a background with the Yxy color 52.8502, 0.3354, 0.3327.

Color Blindness Simulation

Color vision deficiency is a very complex topic, and I could not describe the different causes any better than Wikipedia does, so if you want to learn more, you should check out their [article about color blindness](#).

Dichromacy



Original Color

52.8502, 0.3354, 0.3327

Protanopia

53.1148, 0.3214, 0.3364

Deuteranopia

52.8746, 0.3381, 0.3314



Tritanopia

52.9676, 0.3252, 0.3126

Trichromacy



Original Color

52.8502, 0.3354, 0.3327

Protanomaly

52.8863, 0.3265, 0.3351

Deuteranomaly

52.7246, 0.3373, 0.3315

Tritanomaly

53.0099, 0.3283, 0.3196

Monochromacy



Original Color

52.8502, 0.3354, 0.3327

Achromatopsia

53.9479, 0.3127, 0.3290

Achromatomaly

53.2587, 0.3209, 0.3302

CSS Examples

Text

The CSS property to change the color of the text to Yxy 52.8502, 0.3354, 0.3327 is called "color". The color property can be set on classes, ids or directly on the HTML element.

This example shows how text in the color `rgb(211, 187, 184)` looks like.

```
.text, #text, p{  
    color:rgb(211, 187, 184)  
}
```

If you want to add a text shadow in that color use the text-shadow property, you can generate a text shadow directly with our [CSS Text Shadow Generator](#).

Here you see how black text with a 4 pixel rgb(211, 187, 184) colored shadow looks like.

```
.shadow{ text-shadow: 4px 4px 2px rgb(211, 187, 184) }
```

Border

The CSS property to change the border of an element to Yxy 52.8502, 0.3354, 0.3327 is called "border". The border property can be set on classes, ids or directly on the HTML element.

This example shows the color as border, it can be applied via the CSS property "border" or "border-color".

```
.border, #border, table{ border:4px solid rgb(211, 187, 184) }
```

If only the border color should be changed use the property `border-color`.

```
.border{ border-color:rgb(211, 187, 184) }
```

If you want to add a box shadow in that color use:

Here you see how a box with a 4 pixel `rgb(211, 187, 184)` colored shadow looks like.

```
.boxshadow{ -moz-box-shadow:4px 4px 4px  
4px rgb(211, 187, 184); -webkit-box-  
shadow:4px 4px 4px 4px rgb(211, 187, 184);  
box-shadow:4px 4px 4px 4px rgb(211, 187,  
184) }
```


Background

The CSS property to change the background color of an element to Yxy 52.8502, 0.3354, 0.3327 is called "background". The background property can be set on classes, ids or directly on the HTML element.

```
.background, #background, body{  
background: rgb(211, 187, 184) }
```

If only the background color should be changed can be used:

```
.background{ background-color: rgb(211,  
187, 184) }
```

This example shows the color as background, it is applied via the CSS property "background".

To optimize and compress your CSS code, you can use our [online CSS compressor and optimizer](#) based on csstidy. If you want to create a linear or radial gradient as background or border, check our [CSS Gradient Generator](#).

Hey! You found this booklet interesting? Support Converting Colors with the new Membership Option!

The pro membership hides all ads, plus gives you double the colors in the color bucket, and more awesome pro features!

[Learn more, Memberships starting at \\$2.50/m!](#)

**Follow me
on Twitter!**

@ConvertingColor