

# Converting Colors

$Yxy(52.7932, 0.3308, 0.3363)$

Have a look what the booklet for  
Yxy(52.7932, 0.3308, 0.3363)  
contains.

<b>Yxy(52.7932, 0.3308, 0.3363)</b> .....	3
<b>Conversions</b> .....	4
<b>Details</b> .....	6
<b>Harmonies</b> .....	12
<b>Previews</b> .....	24
<b>Color Blindness Simulation</b> .....	27
<b>CSS Examples</b> .....	30

# Color

**Yxy(52.7932, 0.3308, 0.3363)**

# Conversions

## Conversions Part 1

<b>Format</b>	<b>Color</b>
Hex	CDBDB7
RGB	205, 189, 183
RGB Percent	80%, 74%, 72%
CMY	0.1959, 0.2589, 0.2823
CMYK	0.00, 0.08, 0.11, 0.20
HSL	16°, 18%, 76%
HSV	16°, 11%, 80%
XYZ	51.9298, 52.7932, 52.2595
YIQ	193.1000, 11.4620, 1.5260

# Conversions

## Conversions Part 2

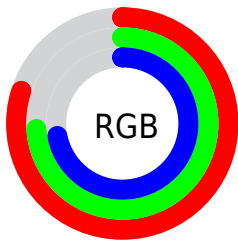
<b>Format</b>	<b>Color</b>
<b>R<sub>YB</sub></b>	205, 191, 183
Decimal	13483447
CIE Lab	77.75, 4.65, 5.05
CIE LCh	78, 6.865, 47.387
Yxy	52.7932, 0.3308, 0.3363
Android (android.graphics.Color)	4291673527 (0xFFCDBDB7)
YUV	193.1000, -4.9793, 10.4363
Hunter-Lab	72.6589, 0.4220, 8.2173

# Details

The Yxy color **52.7932, 0.3308, 0.3363** is a light color, and the websafe version is hex **CCCCCC**. A complement of this color would be **55.3515, 0.2963, 0.3216**, and the grayscale version is **53.4189, 0.3127, 0.3290**.

A 20% lighter version of the original color is **92.7968, 0.3229, 0.3349**, and **25.7993, 0.3361, 0.3388** is the 20% darker color. If you saturate the color by 10%, you get **45.9044, 0.3510, 0.3436**, and if you desaturate by 10%, it is **60.4728, 0.3139, 0.3295**.

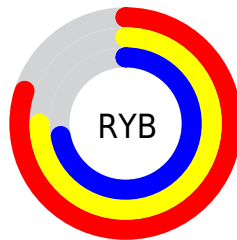
# Distribution



Red (80%)

Green (74%)

Blue (72%)



Red (80%)

Yellow (75%)

Blue (72%)

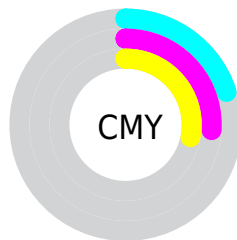


Cyan (0%)

Magenta (8%)

Yellow (11%)

Black (20%)



Cyan (20%)

Magenta (26%)


Yellow (28%)


# Brightness & Saturation Gradients

These gradients show how the Yxy color 52.7932, 0.3308, 0.3363 changes by changing the brightness by 10 percent. The first figure shows a shift by +10% for each color and the second figure -10%.

Similar to the brightness gradients but the following saturation gradients show a change of the Yxy color 52.7932, 0.3308, 0.3363 by changing the saturation by 10% instead.





 52.7932, 0.3308,  
0.3363

 52.7932, 0.3308,  
0.3363

397.4912, 0.3219,  
0.3328

 37.6377, 0.3330,  
0.3371


 94.3000, 0.3276,  
0.3351

 25.7016, 0.3357,  
0.3382


121.4201, 0.3264,  
0.3346

 16.6006, 0.3394,  
0.3396


153.2972, 0.3254,  
0.3342

 9.9501, 0.3444,  
0.3414

190.3156, 0.3245,  
0.3338

 5.3659, 0.3517,  
0.3440

232.8599, 0.3237,  
0.3335

 2.4635, 0.3635,  
0.3480

281.3143, 0.3230,

 0.8583, 0.3931,

0.3332

0.3619

336.0633, 0.3224,  
0.3330

0.0000, 0.0000,  
0.0000

52.7932, 0.3308,  
0.3363

52.7932, 0.3308,  
0.3363

45.9044, 0.3510,  
0.3436

60.4728, 0.3139,  
0.3295

39.7743, 0.3750,  
0.3511

68.9605, 0.2997,  
0.3232

34.3784, 0.4032,  
0.3585

78.2816, 0.2877,  
0.3174

29.6886, 0.4357,  
0.3653

87.7953, 0.2829,  
0.3224

25.6747, 0.4720,  
0.3705

91.7242, 0.2833,  
0.3289

■ 22.3043, 0.5102,  
0.3731

■ 19.5420, 0.5476,  
0.3721

■ 17.3486, 0.5803,  
0.3666

■ 15.7802, 0.6041,  
0.3586

# Harmonies

## Analogous

The Analogous color harmony consists of three colors that are next to each other on the color wheel.



52.7932, 0.3275, 0.3284



52.7932, 0.3308, 0.3363



52.7932, 0.3291, 0.3425

# Triad

The Triadic color harmony groups three colors that are evenly spaced from another and form a triangle on the color wheel.



52.7932, 0.3308, 0.3363



52.7932, 0.3051, 0.3375



52.7932, 0.3024, 0.3133

# Complementary

The Complementary color scheme is a pair of colors which are on the opposite of each other on the color wheel.



52.7932, 0.3308, 0.3363



55.3515, 0.2963, 0.3216

# Split Complementary

Split-complementary colors differ from the complementary color scheme. The scheme consists of three colors, the original color and two neighbors of the complement color.



52.7932, 0.2965, 0.3155



52.7932, 0.3308, 0.3363



52.7932, 0.2981, 0.3294

# Square

The Square scheme is like the rectangle color scheme, but the four colors are evenly spaced on the color wheel.



52.7932, 0.3308, 0.3363



52.7932, 0.3142, 0.3433



52.7932, 0.2950, 0.3213



52.7932, 0.3110, 0.3153



# Rectangle

The Rectangle color scheme consists of four colors that form a rectangle on the color wheel.



52.7932, 0.3308, 0.3363



52.7932, 0.3255, 0.3447



52.7932, 0.2950, 0.3213



52.7932, 0.3000, 0.3136

# Sweetspot

The Sweet Spot groups the original color and five complimentary colors.



52.7955, 0.3308, 0.3363



96.0126, 0.3175, 0.3310



50.9878, 0.3186, 0.3097



20.3270, 0.3188, 0.3316



0.0000, 0.0000, 0.0000



21.4041, 0.3127, 0.3290

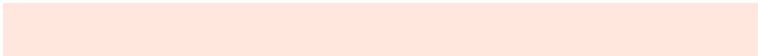


# Same Dimension

The Same Dimension uses a secret algorithm to generate beautiful new colors.



52.7955, 0.3308, 0.3363



83.5937, 0.3354, 0.3380



57.6646, 0.3293, 0.3493



11.7010, 0.3283, 0.3354



9.9567, 0.6016, 0.3606



0.6423, 0.5621, 0.3919

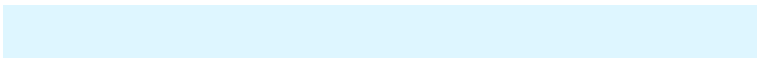


# Inverse Universe

The Inverse Universe completely reimagines the original color for something new.



55.3515, 0.2963, 0.3216



88.6375, 0.2925, 0.3198



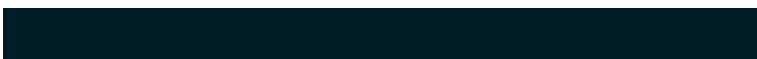
50.5098, 0.2961, 0.3079



12.1918, 0.2983, 0.3226



16.3583, 0.1998, 0.2391



0.9657, 0.2052, 0.2587



# Previews

## White Background



This preview shows how the Yxy color 52.7932, 0.3308, 0.3363 looks on a white background.

## Color Contrast Check

Large Text (above 18pt) WCAG AA × Fail

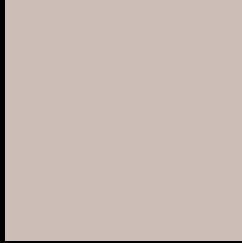
Any Text WCAG AA × Fail

Large Text (above 18pt) WCAG AAA × Fail

Any Text WCAG AAA × Fail



# Black Background



This preview shows how the Yxy color 52.7932, 0.3308, 0.3363 looks on a black background.

## Color Contrast Check

Large Text (above 18pt) WCAG AA ✓ Pass

Any Text WCAG AA ✓ Pass

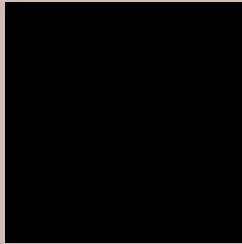
Large Text (above 18pt) WCAG AAA ✓ Pass

Any Text WCAG AAA ✓ Pass

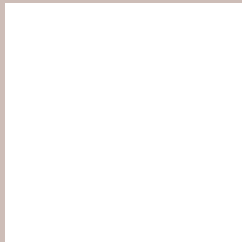
If you want to check with other color combinations, try the [Color Contrast Checker](#).

**Yxy 52.7932, 0.3308, 0.3363**

## **Background**



This preview shows how black text looks on a background with the Yxy color 52.7932, 0.3308, 0.3363.



This preview shows how white text looks on a background with the Yxy color 52.7932, 0.3308, 0.3363.

# Color Blindness Simulation

Color vision deficiency is a very complex topic, and I could not describe the different causes any better than Wikipedia does, so if you want to learn more, you should check out their [article about color blindness](#).

## Dichromacy



### Original Color

52.7932, 0.3308, 0.3363

### Protanopia

52.5926, 0.3230, 0.3377

### Deuteranopia

52.8746, 0.3381, 0.3314



## Tritanopia

52.6003, 0.3185, 0.3112

# Trichromacy



## Original Color

52.7932, 0.3308, 0.3363

## Protanomaly

52.5670, 0.3256, 0.3364

## Deuteranomaly

52.8502, 0.3354, 0.3327

## Tritanomaly

52.5575, 0.3231, 0.3206

# Monochromacy



## Original Color

52.7932, 0.3308, 0.3363

## Achromatopsia

53.3276, 0.3127, 0.3290

## Achromatomaly

53.2437, 0.3191, 0.3327

# CSS Examples

## Text

The CSS property to change the color of the text to Yxy 52.7932, 0.3308, 0.3363 is called "color". The color property can be set on classes, ids or directly on the HTML element.

This example shows how text in the color `rgb(205, 189, 183)` looks like.

```
.text, #text, p{  
    color:rgb(205, 189, 183)  
}
```

If you want to add a text shadow in that color use the text-shadow property, you can generate a text shadow directly with our [CSS Text Shadow Generator](#).

Here you see how black text with a 4 pixel rgb(205, 189, 183) colored shadow looks like.

```
.shadow{ text-shadow: 4px 4px 2px rgb(205, 189, 183) }
```

## Border

The CSS property to change the border of an element to Yxy 52.7932, 0.3308, 0.3363 is called "border". The border property can be set on classes, ids or directly on the HTML element.

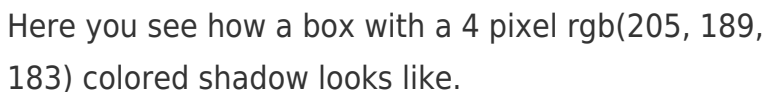
This example shows the color as border, it can be applied via the CSS property "border" or "border-color".

```
.border, #border, table{ border:4px solid rgb(205, 189, 183) }
```

If only the border color should be changed use the property `border-color`.

```
.border{ border-color:rgb(205, 189, 183) }
```

If you want to add a box shadow in that color use:



Here you see how a box with a 4 pixel `rgb(205, 189, 183)` colored shadow looks like.

```
.boxshadow{ -moz-box-shadow:4px 4px 4px 4px rgb(205, 189, 183); -webkit-box-shadow:4px 4px 4px 4px rgb(205, 189, 183); box-shadow:4px 4px 4px 4px rgb(205, 189, 183) }
```



# Background

The CSS property to change the background color of an element to Yxy 52.7932, 0.3308, 0.3363 is called "background". The background property can be set on classes, ids or directly on the HTML element.

```
.background, #background, body{  
background: rgb(205, 189, 183) }
```

If only the background color should be changed can be used:

```
.background{ background-color: rgb(205,  
189, 183) }
```

This example shows the color as background, it is applied via the CSS property "background".

To optimize and compress your CSS code, you can use our [online CSS compressor and optimizer](#) based on csstidy. If you want to create a linear or radial gradient as background or border, check our [CSS Gradient Generator](#).

Hey! You found this booklet interesting? Support Converting Colors with the new Membership Option!

The pro membership hides all ads, plus gives you double the colors in the color bucket, and more awesome pro features!

**[Learn more, Memberships starting at \\$2.50/m!](#)**

**Follow me  
on Twitter!**

@ConvertingColor