

Converting Colors

Yxy(52.9453, 0.3830, 0.3825)

Have a look what the booklet for
Yxy(52.9453, 0.3830, 0.3825)
contains.

Yxy(52.8882, 0.3832, 0.3816)	3
<i>Conversions</i>	4
<i>Details</i>	6
<i>Harmonies</i>	12
<i>Previews</i>	24
<i>Color Blindness Simulation</i>	27
<i>CSS Examples</i>	30

Color

Yxy(52.8882, 0.3832, 0.3816)

Conversions

Conversions Part 1

Format	Color
Hex	E0BA8D
RGB	224, 186, 141
RGB Percent	88%, 73%, 55%
CMY	0.1215, 0.2706, 0.4472
CMYK	0.00, 0.17, 0.37, 0.12
HSL	33°, 57%, 72%
HSV	33°, 37%, 88%
XYZ	53.1100, 52.8882, 32.5978
YIQ	192.2320, 37.0930, -5.9390

Conversions

Conversions Part 2

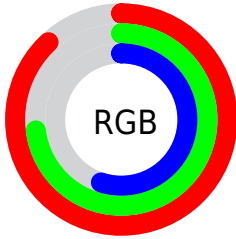
Format	Color
RYB	211, 224, 141
Decimal	14727821
CIELab	77.81, 7.48, 27.94
CIElCh	78, 28.928, 75.017
Yxy	52.8882, 0.3832, 0.3816
Android (android.graphics.Color)	4292917901 (0xFFE0BA8D)
YUV	192.2320, -25.2574, 27.8605
Hunter-Lab	72.7243, 3.0896, 24.3310

Details

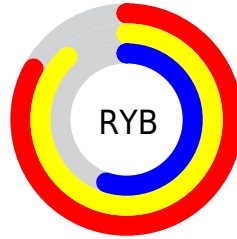
The Yxy color **52.8882, 0.3832, 0.3816** is a light color, and the websafe version is hex **FFCC99**. A complement of this color would be **43.2809, 0.2525, 0.2695**, and the grayscale version is **52.9902, 0.3127, 0.3290**.

A 20% lighter version of the original color is **88.7044, 0.3511, 0.3760**, and **25.7287, 0.4016, 0.3949** is the 20% darker color. If you saturate the color by 10%, you get **48.1226, 0.4071, 0.3956**, and if you desaturate by 10%, it is **58.1038, 0.3612, 0.3670**.

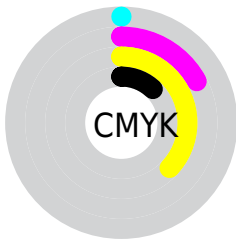
Distribution



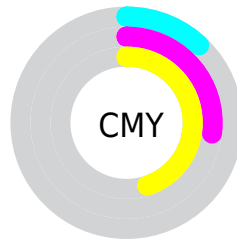
- Red (88%)
- Green (73%)
- Blue (55%)



- Red (83%)
- Yellow (88%)
- Blue (55%)



- Cyan (0%)
- Magenta (17%)
- Yellow (37%)
- Black (12%)





- Cyan (12%)
- Magenta (27%)
- Yellow (45%)

Brightness & Saturation Gradients


These gradients show how the Yxy color 52.8882, 0.3832, 0.3816 changes by changing the brightness by 10 percent. The first figure shows a shift by +10% for each color and the second figure -10%.


Similar to the brightness gradients but the following saturation gradients show a change of the Yxy color 52.8882, 0.3832, 0.3816 by changing the saturation by 10% instead.

 52.8882, 0.3832,
0.3816

 52.8882, 0.3832,
0.3816


397.8560, 0.3488,
0.3567

 37.7135, 0.3914,
0.3873


 94.4398, 0.3709,
0.3729

 25.7604, 0.4018,
0.3942


 121.5856, 0.3663,
0.3696

 16.6445, 0.4150,
0.4029

 153.4905, 0.3623,
0.3667

 9.9814, 0.4325,
0.4137

190.5389, 0.3588,
0.3642

 5.3866, 0.4563,
0.4273

233.1153, 0.3558,
0.3620

 2.4758, 0.5061,
0.4582

281.6040, 0.3532,

 0.8645, 0.5400,

0.3600

0.4600

336.3895, 0.3509,
0.3583

0.0000, 0.0000,
0.0000

52.8882, 0.3832,
0.3816

52.8882, 0.3832,
0.3816

48.1226, 0.4071,
0.3956

58.1038, 0.3612,
0.3670

43.7849, 0.4325,
0.4080

63.7757, 0.3414,
0.3525

39.8619, 0.4583,
0.4177

69.9195, 0.3239,
0.3385

36.3364, 0.4833,
0.4234

76.5476, 0.3084,
0.3252

33.1891, 0.5059,
0.4241

83.6718, 0.2948,
0.3129

■ 30.3969, 0.5248,
0.4193

■ 89.9201, 0.2939,
0.3214

■ 29.6374, 0.5300,
0.4173

■ 94.5904, 0.2941,
0.3289

Harmonies

Analogous

The Analogous color harmony consists of three colors that are next to each other on the color wheel.



52.8882, 0.3897, 0.3536



52.8882, 0.3832, 0.3816



52.8882, 0.3573, 0.3976

Triad

The Triadic color harmony groups three colors that are evenly spaced from another and form a triangle on the color wheel.



52.8882, 0.3832, 0.3816



52.8882, 0.2544, 0.3318



52.8882, 0.3013, 0.2733

Complementary

The Complementary color scheme is a pair of colors which are on the opposite of each other on the color wheel.



52.8882, 0.3832, 0.3816



43.2809, 0.2525, 0.2695

Split Complementary

Split-complementary colors differ from the complementary color scheme. The scheme consists of three colors, the original color and two neighbors of the complement color.



52.8882, 0.2671, 0.2659



52.8882, 0.3832, 0.3816



52.8882, 0.2414, 0.2967

Square

The Square scheme is like the rectangle color scheme, but the four colors are evenly spaced on the color wheel.



52.8882, 0.3832, 0.3816



52.8882, 0.2828, 0.3688



52.8882, 0.2459, 0.2736



52.8882, 0.3408, 0.2934

Rectangle

The Rectangle color scheme consists of four colors that form a rectangle on the color wheel.



52.8882, 0.3832, 0.3816



52.8882, 0.3332, 0.3976



52.8882, 0.2459, 0.2736



52.8882, 0.2888, 0.2693

Sweetspot

The Sweet Spot groups the original color and five complimentary colors.



52.8907, 0.3832, 0.3816



90.4019, 0.3307, 0.3440



38.1768, 0.3604, 0.2838



19.1083, 0.3330, 0.3459



0.0000, 0.0000, 0.0000



21.4041, 0.3127, 0.3290

Same Dimension

The Same Dimension uses a secret algorithm to generate beautiful new colors.



52.8907, 0.3832, 0.3816



66.2488, 0.4004, 0.3919



70.6558, 0.3661, 0.4215



14.9257, 0.3278, 0.3417



17.4806, 0.5279, 0.4190



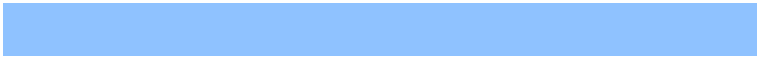
1.3901, 0.5066, 0.4359

Inverse Universe

The Inverse Universe completely reimagines the original color for something new.



43.2809, 0.2525, 0.2695



51.6996, 0.2405, 0.2554



30.3311, 0.2471, 0.2177



14.2720, 0.2981, 0.3160



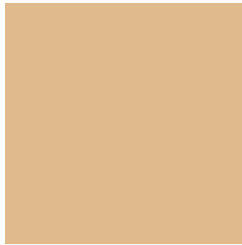
8.9511, 0.1735, 0.1446



0.7979, 0.1817, 0.1740

Previews

White Background



This preview shows how the Yxy color 52.8882, 0.3832, 0.3816 looks on a white background.

Color Contrast Check

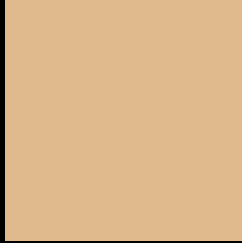
Large Text (above 18pt) WCAG AA × Fail

Any Text WCAG AA × Fail

Large Text (above 18pt) WCAG AAA × Fail

Any Text WCAG AAA × Fail

Black Background



This preview shows how the Yxy color 52.8882, 0.3832, 0.3816 looks on a black background.

Color Contrast Check

Large Text (above 18pt) WCAG AA ✓ Pass

Any Text WCAG AA ✓ Pass

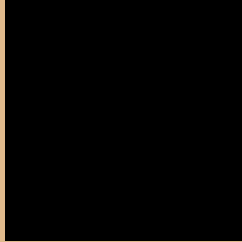
Large Text (above 18pt) WCAG AAA ✓ Pass

Any Text WCAG AAA ✓ Pass

If you want to check with other color combinations, try the [Color Contrast Checker](#).

Yxy 52.8882, 0.3832, 0.3816

Background



This preview shows how black text looks on a background with the Yxy color 52.8882, 0.3832, 0.3816.



This preview shows how white text looks on a background with the Yxy color 52.8882, 0.3832, 0.3816.

Color Blindness Simulation

Color vision deficiency is a very complex topic, and I could not describe the different causes any better than Wikipedia does, so if you want to learn more, you should check out their [article about color blindness](#).

Dichromacy



Original Color

52.8882, 0.3832, 0.3816

Protanopia

52.8347, 0.3624, 0.3880

Deuteranopia

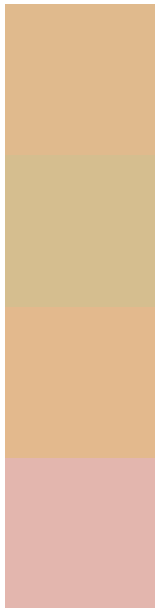
52.6980, 0.3876, 0.3787



Tritanopia

52.7485, 0.3448, 0.3133

Trichromacy



Original Color

52.8882, 0.3832, 0.3816

Protanomaly

52.9562, 0.3701, 0.3857

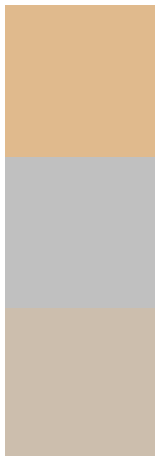
Deuteranomaly

52.9519, 0.3863, 0.3799

Tritanomaly

52.8428, 0.3589, 0.3383

Monochromacy



Original Color

52.8882, 0.3832, 0.3816

Achromatopsia

52.7115, 0.3127, 0.3290

Achromatomaly

52.6814, 0.3378, 0.3499

CSS Examples

Text

The CSS property to change the color of the text to Yxy 52.8882, 0.3832, 0.3816 is called "color". The color property can be set on classes, ids or directly on the HTML element.

This example shows how text in the color `rgb(224, 186, 141)` looks like.

```
.text, #text, p{  
    color:rgb(224, 186, 141)  
}
```

If you want to add a text shadow in that color use the text-shadow property, you can generate a text shadow directly with our [CSS Text Shadow Generator](#).

Here you see how black text with a 4 pixel rgb(224, 186, 141) colored shadow looks like.

```
.shadow{ text-shadow: 4px 4px 2px rgb(224, 186, 141) }
```

Border

The CSS property to change the border of an element to Yxy 52.8882, 0.3832, 0.3816 is called "border". The border property can be set on classes, ids or directly on the HTML element.

This example shows the color as border, it can be applied via the CSS property "border" or "border-color".

```
.border, #border, table{ border:4px solid rgb(224, 186, 141) }
```

If only the border color should be changed use the property `border-color`.

```
.border{ border-color:rgb(224, 186, 141) }
```

If you want to add a box shadow in that color use:

Here you see how a box with a 4 pixel `rgb(224, 186, 141)` colored shadow looks like.

```
.boxshadow{ -moz-box-shadow:4px 4px 4px  
4px rgb(224, 186, 141); -webkit-box-  
shadow:4px 4px 4px 4px rgb(224, 186, 141);  
box-shadow:4px 4px 4px 4px rgb(224, 186,  
141) }
```


Background

The CSS property to change the background color of an element to Yxy 52.8882, 0.3832, 0.3816 is called "background". The background property can be set on classes, ids or directly on the HTML element.

```
.background, #background, body{  
background: rgb(224, 186, 141) }
```

If only the background color should be changed can be used:

```
.background{ background-color: rgb(224,  
186, 141) }
```

This example shows the color as background, it is applied via the CSS property "background".

To optimize and compress your CSS code, you can use our [online CSS compressor and optimizer](#) based on csstidy. If you want to create a linear or radial gradient as background or border, check our [CSS Gradient Generator](#).

Hey! You found this booklet interesting? Support Converting Colors with the new Membership Option!

The pro membership hides all ads, plus gives you double the colors in the color bucket, and more awesome pro features!

[Learn more, Memberships starting at \\$2.50/m!](#)

**Follow me
on Twitter!**

@ConvertingColor