

Converting Colors

Yxy(52.9535, 0.3655, 0.3488)

Have a look what the booklet for
Yxy(52.9535, 0.3655, 0.3488)
contains.

Yxy(52.9510, 0.3655, 0.3488)	3
Conversions	4
Details	6
Harmonies	12
Previews	24
Color Blindness Simulation	27
CSS Examples	30

Color

Yxy(52.9510, 0.3655, 0.3488)

Conversions

Conversions Part 1

Format	Color
Hex	E3B7A6
RGB	227, 183, 166
RGB Percent	89%, 72%, 65%
CMY	0.1099, 0.2823, 0.3490
CMYK	0.00, 0.19, 0.27, 0.11
HSL	17°, 52%, 77%
HSV	17°, 27%, 89%
XYZ	55.4862, 52.9510, 43.3718
YIQ	194.2180, 31.6810, 4.0410

Conversions

Conversions Part 2

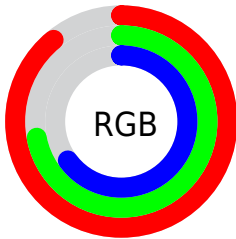
Format	Color
R_{YB}	227, 190, 166
Decimal	14923686
CIE _{Lab}	77.85, 13.37, 14.65
CIE _{LCh}	78, 19.833, 47.606
Yxy	52.9510, 0.3655, 0.3488
Android (android.graphics.Color)	4293113766 (0xFFE3B7A6)
YUV	194.2180, -13.9115, 28.7498
Hunter-Lab	72.7674, 8.7658, 15.5984

Details

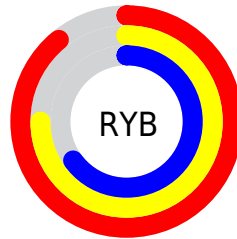
The Yxy color **52.9510, 0.3655, 0.3488** is a light color, and the websafe version is hex **FFCCCC**. A complement of this color would be **59.7162, 0.2716, 0.3082**, and the grayscale version is **54.1542, 0.3127, 0.3290**.

A 20% lighter version of the original color is **88.2135, 0.3348, 0.3469**, and **25.8381, 0.3805, 0.3535** is the 20% darker color. If you saturate the color by 10%, you get **45.8305, 0.3922, 0.3566**, and if you desaturate by 10%, it is **61.0079, 0.3429, 0.3411**.

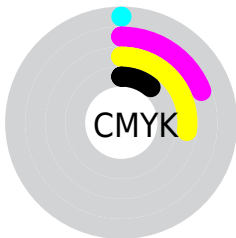
Distribution



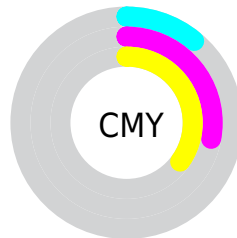
- Red (89%)
- Green (72%)
- Blue (65%)



- Red (89%)
- Yellow (75%)
- Blue (65%)



- Cyan (0%)
- Magenta (19%)
- Yellow (27%)
- Black (11%)





- Cyan (11%)
- Magenta (28%)
- Yellow (35%)

Brightness & Saturation Gradients


These gradients show how the Yxy color 52.9510, 0.3655, 0.3488 changes by changing the brightness by 10 percent. The first figure shows a shift by +10% for each color and the second figure -10%.


Similar to the brightness gradients but the following saturation gradients show a change of the Yxy color 52.9510, 0.3655, 0.3488 by changing the saturation by 10% instead.


 52.9510, 0.3655,
0.3488


 52.9510, 0.3655,
0.3488


398.0971, 0.3395,
0.3397

 37.7637, 0.3719,
0.3509


 94.5323, 0.3561,
0.3456

 25.7993, 0.3800,
0.3534


 121.6950, 0.3526,
0.3444

 16.6736, 0.3906,
0.3565


153.6182, 0.3496,
0.3433

 10.0020, 0.4052,
0.3604

190.6865, 0.3470,
0.3424

 5.4003, 0.4262,
0.3653

233.2841, 0.3447,
0.3416

 2.4840, 0.4590,
0.3712

281.7955, 0.3428,

 0.8686, 0.5784,

0.3409

0.4216

336.6050, 0.3410,
0.3402

0.0000, 1.0000,
0.0000

0.0000, 0.0000,
0.0000

52.9510, 0.3655,
0.3488

52.9510, 0.3655,
0.3488

45.8305, 0.3922,
0.3566

61.0079, 0.3429,
0.3411

39.6046, 0.4231,
0.3639

70.0264, 0.3239,
0.3338

34.2389, 0.4581,
0.3700

80.0399, 0.3080,
0.3269

29.6943, 0.4958,
0.3739

90.9626, 0.2957,
0.3224

■ 25.9279, 0.5338,
0.3743

■ 95.0649, 0.2958,
0.3290

■ 22.8930, 0.5684,
0.3704

■ 20.5357, 0.5959,
0.3620

■ 19.9206, 0.6033,
0.3591

Harmonies

Analogous

The Analogous color harmony consists of three colors that are next to each other on the color wheel.



52.9510, 0.3560, 0.3266



52.9510, 0.3655, 0.3488



52.9510, 0.3601, 0.3672

Triad

The Triadic color harmony groups three colors that are evenly spaced from another and form a triangle on the color wheel.



52.9510, 0.3655, 0.3488



52.9510, 0.2903, 0.3539



52.9510, 0.2830, 0.2849

Complementary

The Complementary color scheme is a pair of colors which are on the opposite of each other on the color wheel.



52.9510, 0.3655, 0.3488



59.7162, 0.2716, 0.3082

Split Complementary

Split-complementary colors differ from the complementary color scheme. The scheme consists of three colors, the original color and two neighbors of the complement color.



52.9510, 0.2669, 0.2899



52.9510, 0.3655, 0.3488



52.9510, 0.2710, 0.3292

Square

The Square scheme is like the rectangle color scheme, but the four colors are evenly spaced on the color wheel.



52.9510, 0.3655, 0.3488



52.9510, 0.3162, 0.3715



52.9510, 0.2627, 0.3057



52.9510, 0.3075, 0.2908

Rectangle

The Rectangle color scheme consists of four colors that form a rectangle on the color wheel.



52.9510, 0.3655, 0.3488



52.9510, 0.3491, 0.3745



52.9510, 0.2627, 0.3057



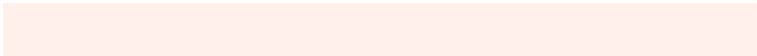
52.9510, 0.2765, 0.2853

Sweetspot

The Sweet Spot groups the original color and five complimentary colors.



52.9534, 0.3655, 0.3488



89.7293, 0.3260, 0.3346



48.2858, 0.3295, 0.2790



18.8125, 0.3287, 0.3357



0.0000, 0.0000, 0.0000



21.4041, 0.3127, 0.3290

Same Dimension

The Same Dimension uses a secret algorithm to generate beautiful new colors.



52.9534, 0.3655, 0.3488



63.8545, 0.3792, 0.3530



66.5352, 0.3570, 0.3814



15.0197, 0.3285, 0.3356



11.7913, 0.6007, 0.3612



1.0243, 0.5720, 0.3841

Inverse Universe

The Inverse Universe completely reimagines the original color for something new.



59.7162, 0.2716, 0.3082



73.9861, 0.2637, 0.3035



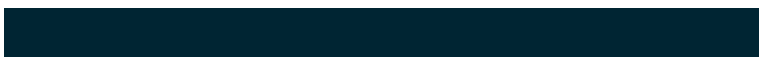
46.3844, 0.2679, 0.2704



15.6204, 0.2981, 0.3223



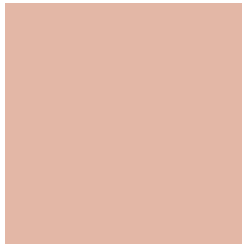
18.8469, 0.1988, 0.2358



1.5474, 0.2031, 0.2510

Previews

White Background



This preview shows how the Yxy color 52.9510, 0.3655, 0.3488 looks on a white background.

Color Contrast Check

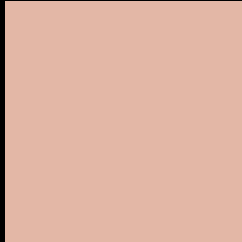
Large Text (above 18pt) WCAG AA × Fail

Any Text WCAG AA × Fail

Large Text (above 18pt) WCAG AAA × Fail

Any Text WCAG AAA × Fail

Black Background



This preview shows how the Yxy color 52.9510, 0.3655, 0.3488 looks on a black background.

Color Contrast Check

Large Text (above 18pt) WCAG AA ✓ Pass

Any Text WCAG AA ✓ Pass

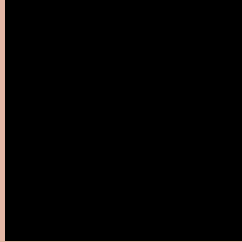
Large Text (above 18pt) WCAG AAA ✓ Pass

Any Text WCAG AAA ✓ Pass

If you want to check with other color combinations, try the [Color Contrast Checker](#).

Yxy 52.9510, 0.3655, 0.3488

Background



This preview shows how black text looks on a background with the Yxy color 52.9510, 0.3655, 0.3488.



This preview shows how white text looks on a background with the Yxy color 52.9510, 0.3655, 0.3488.

Color Blindness Simulation

Color vision deficiency is a very complex topic, and I could not describe the different causes any better than Wikipedia does, so if you want to learn more, you should check out their [article about color blindness](#).

Dichromacy



Original Color

52.9510, 0.3655, 0.3488

Protanopia

53.0571, 0.3365, 0.3550

Deuteranopia

52.8232, 0.3596, 0.3515



Tritanopia

52.9134, 0.3457, 0.3133

Trichromacy



Original Color

52.9510, 0.3655, 0.3488

Protanomaly

52.9614, 0.3464, 0.3533

Deuteranomaly

52.7221, 0.3617, 0.3502

Tritanomaly

52.7194, 0.3533, 0.3257

Monochromacy



Original Color

52.9510, 0.3655, 0.3488

Achromatopsia

53.9479, 0.3127, 0.3290

Achromatomaly

53.4094, 0.3307, 0.3363

CSS Examples

Text

The CSS property to change the color of the text to Yxy 52.9510, 0.3655, 0.3488 is called "color". The color property can be set on classes, ids or directly on the HTML element.

This example shows how text in the color `rgb(227, 183, 166)` looks like.

```
.text, #text, p{  
    color:rgb(227, 183, 166)  
}
```

If you want to add a text shadow in that color use the text-shadow property, you can generate a text shadow directly with our [CSS Text Shadow Generator](#).

Here you see how black text with a 4 pixel rgb(227, 183, 166) colored shadow looks like.

```
.shadow{ text-shadow: 4px 4px 2px rgb(227, 183, 166) }
```

Border

The CSS property to change the border of an element to Yxy 52.9510, 0.3655, 0.3488 is called "border". The border property can be set on classes, ids or directly on the HTML element.

This example shows the color as border, it can be applied via the CSS property "border" or "border-color".

```
.border, #border, table{ border:4px solid rgb(227, 183, 166) }
```

If only the border color should be changed use the property `border-color`.

```
.border{ border-color:rgb(227, 183, 166) }
```

If you want to add a box shadow in that color use:

Here you see how a box with a 4 pixel `rgb(227, 183, 166)` colored shadow looks like.

```
.boxshadow{ -moz-box-shadow:4px 4px 4px  
4px rgb(227, 183, 166); -webkit-box-  
shadow:4px 4px 4px 4px rgb(227, 183, 166);  
box-shadow:4px 4px 4px 4px rgb(227, 183,  
166) }
```


Background

The CSS property to change the background color of an element to Yxy 52.9510, 0.3655, 0.3488 is called "background". The background property can be set on classes, ids or directly on the HTML element.

```
.background, #background, body{  
background: rgb(227, 183, 166) }
```

If only the background color should be changed can be used:

```
.background{ background-color: rgb(227,  
183, 166) }
```

This example shows the color as background, it is applied via the CSS property "background".

To optimize and compress your CSS code, you can use our [online CSS compressor and optimizer](#) based on csstidy. If you want to create a linear or radial gradient as background or border, check our [CSS Gradient Generator](#).

Hey! You found this booklet interesting? Support Converting Colors with the new Membership Option!

The pro membership hides all ads, plus gives you double the colors in the color bucket, and more awesome pro features!

[Learn more, Memberships starting at \\$2.50/m!](#)

**Follow me
on Twitter!**

@ConvertingColor