

Converting Colors

$Yxy(53.0690, 0.3532, 0.3361)$

Have a look what the booklet for
Yxy(53.0690, 0.3532, 0.3361)
contains.

Yxy(52.8886, 0.3534, 0.3361)	3
Conversions	4
Details	6
Harmonies	12
Previews	24
Color Blindness Simulation	27
CSS Examples	30

Color

Yxy(52.8886, 0.3534, 0.3361)

Conversions

Conversions Part 1

Format	Color
Hex	E0B7B1
RGB	224, 183, 177
RGB Percent	88%, 72%, 69%
CMY	0.1215, 0.2823, 0.3060
CMYK	0.00, 0.18, 0.21, 0.12
HSL	8°, 43%, 79%
HSV	8°, 21%, 88%
XYZ	55.6109, 52.8886, 48.8602
YIQ	194.5750, 26.3620, 6.8260

Conversions

Conversions Part 2

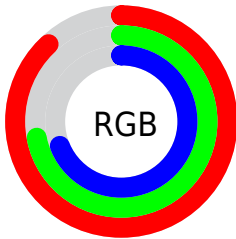
Format	Color
RYB	224, 184, 177
Decimal	14727089
CIELab	77.81, 13.84, 8.62
CIELCh	78, 16.309, 31.913
Yxy	52.8886, 0.3534, 0.3361
Android (android.graphics.Color)	4292917169 (0xFFE0B7B1)
YUV	194.5750, -8.6645, 25.8057
Hunter-Lab	72.7245, 9.2272, 11.0730

Details

The Yxy color **52.8886, 0.3534, 0.3361** is a light color, and the websafe version is hex **FFCCCC**. A complement of this color would be **64.8641, 0.2810, 0.3218**, and the grayscale version is **54.3492, 0.3127, 0.3290**.

A 20% lighter version of the original color is **88.8762, 0.3272, 0.3349**, and **25.7453, 0.3650, 0.3384** is the 20% darker color. If you saturate the color by 10%, you get **44.5637, 0.3797, 0.3397**, and if you desaturate by 10%, it is **62.4830, 0.3319, 0.3326**.

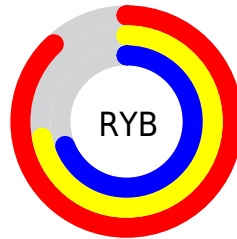
Distribution



Red (88%)

Green (72%)

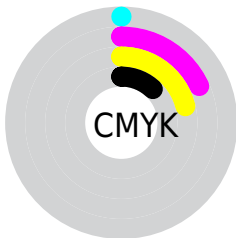
Blue (69%)



Red (88%)

Yellow (72%)

Blue (69%)

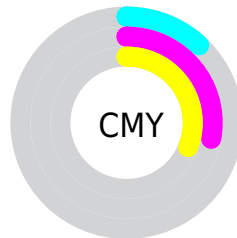


Cyan (0%)

Magenta (18%)

Yellow (21%)

Black (12%)



Cyan (12%)


Magenta (28%)


Yellow (31%)

Brightness & Saturation Gradients


These gradients show how the Yxy color 52.8886, 0.3534, 0.3361 changes by changing the brightness by 10 percent. The first figure shows a shift by +10% for each color and the second figure -10%.


Similar to the brightness gradients but the following saturation gradients show a change of the Yxy color 52.8886, 0.3534, 0.3361 by changing the saturation by 10% instead.


 52.8886, 0.3534,
0.3361

 52.8886, 0.3534,
0.3361


397.8576, 0.3333,
0.3329

 37.7138, 0.3583,
0.3368


 94.4404, 0.3462,
0.3350

 25.7607, 0.3646,
0.3376


121.5863, 0.3434,
0.3346

 16.6447, 0.3729,
0.3386


153.4913, 0.3411,
0.3342

 9.9815, 0.3842,
0.3397

190.5399, 0.3391,
0.3339

 5.3867, 0.4008,
0.3410

233.1164, 0.3374,
0.3336

 2.4759, 0.4271,
0.3423

281.6053, 0.3359,

 0.8645, 0.4996,

0.3334

0.3596

336.3909, 0.3345,
0.3331

0.0000, 1.0000,
0.0000

0.0000, 0.0000,
0.0000

52.8886, 0.3534,
0.3361

52.8886, 0.3534,
0.3361

44.5637, 0.3797,
0.3397

62.4830, 0.3319,
0.3326

37.4482, 0.4115,
0.3433

73.3896, 0.3143,
0.3293

31.4878, 0.4489,
0.3464

85.6577, 0.2999,
0.3263

26.6214, 0.4911,
0.3485

94.5895, 0.2940,
0.3289

■ 22.7819, 0.5355,
0.3488

■ 19.8951, 0.5774,
0.3469

■ 17.8764, 0.6106,
0.3426

■ 16.7133, 0.6302,
0.3378

Harmonies

Analogous

The Analogous color harmony consists of three colors that are next to each other on the color wheel.



52.8886, 0.3399, 0.3177



52.8886, 0.3534, 0.3361



52.8886, 0.3555, 0.3535

Triad

The Triadic color harmony groups three colors that are evenly spaced from another and form a triangle on the color wheel.



52.8886, 0.3534, 0.3361



52.8886, 0.3052, 0.3580



52.8886, 0.2801, 0.2935

Complementary

The Complementary color scheme is a pair of colors which are on the opposite of each other on the color wheel.



52.8886, 0.3534, 0.3361



64.8641, 0.2810, 0.3218

Split Complementary

Split-complementary colors differ from the complementary color scheme. The scheme consists of three colors, the original color and two neighbors of the complement color.



52.8886, 0.2716, 0.3027



52.8886, 0.3534, 0.3361



52.8886, 0.2858, 0.3401

Square

The Square scheme is like the rectangle color scheme, but the four colors are evenly spaced on the color wheel.



52.8886, 0.3534, 0.3361



52.8886, 0.3271, 0.3672



52.8886, 0.2737, 0.3196



52.8886, 0.2973, 0.2936

Rectangle

The Rectangle color scheme consists of four colors that form a rectangle on the color wheel.



52.8886, 0.3534, 0.3361



52.8886, 0.3501, 0.3622



52.8886, 0.2737, 0.3196



52.8886, 0.2762, 0.2956

Sweetspot

The Sweet Spot groups the original color and five complimentary colors.



52.8910, 0.3534, 0.3361



90.8354, 0.3227, 0.3309



52.3746, 0.3195, 0.2827



19.2375, 0.3239, 0.3312



0.0000, 0.0000, 0.0000



21.4041, 0.3127, 0.3290

Same Dimension

The Same Dimension uses a secret algorithm to generate beautiful new colors.



52.8910, 0.3534, 0.3361



66.0711, 0.3638, 0.3376



63.1575, 0.3482, 0.3620



13.9820, 0.3289, 0.3321



9.8189, 0.6284, 0.3392



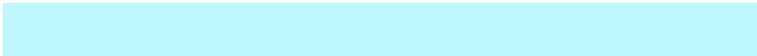
0.7741, 0.6048, 0.3580

Inverse Universe

The Inverse Universe completely reimagines the original color for something new.



64.8641, 0.2810, 0.3218



84.7490, 0.2751, 0.3202



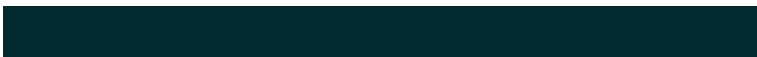
53.7610, 0.2791, 0.2937



15.2570, 0.2982, 0.3259



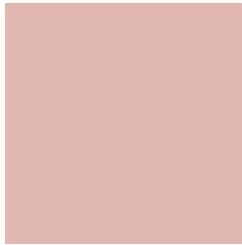
26.0503, 0.2134, 0.2882



1.8904, 0.2153, 0.2950

Previews

White Background



This preview shows how the Yxy color 52.8886, 0.3534, 0.3361 looks on a white background.

Color Contrast Check

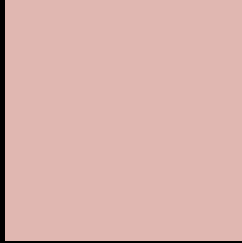
Large Text (above 18pt) WCAG AA × Fail

Any Text WCAG AA × Fail

Large Text (above 18pt) WCAG AAA × Fail

Any Text WCAG AAA × Fail

Black Background



This preview shows how the Yxy color 52.8886, 0.3534, 0.3361 looks on a black background.

Color Contrast Check

Large Text (above 18pt) WCAG AA ✓ Pass

Any Text WCAG AA ✓ Pass

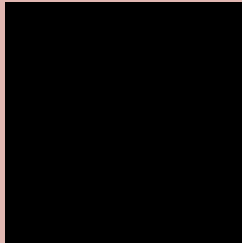
Large Text (above 18pt) WCAG AAA ✓ Pass

Any Text WCAG AAA ✓ Pass

If you want to check with other color combinations, try the [Color Contrast Checker](#).

Yxy 52.8886, 0.3534, 0.3361

Background



This preview shows how black text looks on a background with the Yxy color 52.8886, 0.3534, 0.3361.



This preview shows how white text looks on a background with the Yxy color 52.8886, 0.3534, 0.3361.

Color Blindness Simulation

Color vision deficiency is a very complex topic, and I could not describe the different causes any better than Wikipedia does, so if you want to learn more, you should check out their [article about color blindness](#).

Dichromacy



Original Color

52.8886, 0.3534, 0.3361

Protanopia

53.2188, 0.3261, 0.3413

Deuteranopia

53.0041, 0.3474, 0.3409



Tritanopia

52.7063, 0.3412, 0.3131

Trichromacy



Original Color

52.8886, 0.3534, 0.3361

Protanomaly

53.1004, 0.3357, 0.3399

Deuteranomaly

53.0482, 0.3502, 0.3397

Tritanomaly

52.6861, 0.3452, 0.3211

Monochromacy



Original Color

52.8886, 0.3534, 0.3361

Achromatopsia

54.5724, 0.3127, 0.3290

Achromatomaly

54.0143, 0.3274, 0.3326

CSS Examples

Text

The CSS property to change the color of the text to Yxy 52.8886, 0.3534, 0.3361 is called "color". The color property can be set on classes, ids or directly on the HTML element.

This example shows how text in the color `rgb(224, 183, 177)` looks like.

```
.text, #text, p{  
    color:rgb(224, 183, 177)  
}
```

If you want to add a text shadow in that color use the text-shadow property, you can generate a text shadow directly with our [CSS Text Shadow Generator](#).

Here you see how black text with a 4 pixel rgb(224, 183, 177) colored shadow looks like.

```
.shadow{ text-shadow: 4px 4px 2px rgb(224, 183, 177) }
```

Border

The CSS property to change the border of an element to Yxy 52.8886, 0.3534, 0.3361 is called "border". The border property can be set on classes, ids or directly on the HTML element.

This example shows the color as border, it can be applied via the CSS property "border" or "border-color".

```
.border, #border, table{ border:4px solid rgb(224, 183, 177) }
```

If only the border color should be changed use the property `border-color`.

```
.border{ border-color:rgb(224, 183, 177) }
```

If you want to add a box shadow in that color use:

Here you see how a box with a 4 pixel `rgb(224, 183, 177)` colored shadow looks like.

```
.boxshadow{ -moz-box-shadow:4px 4px 4px  
4px rgb(224, 183, 177); -webkit-box-  
shadow:4px 4px 4px 4px rgb(224, 183, 177);  
box-shadow:4px 4px 4px 4px rgb(224, 183,  
177) }
```


Background

The CSS property to change the background color of an element to Yxy 52.8886, 0.3534, 0.3361 is called "background". The background property can be set on classes, ids or directly on the HTML element.

```
.background, #background, body{  
background: rgb(224, 183, 177) }
```

If only the background color should be changed can be used:

```
.background{ background-color: rgb(224,  
183, 177) }
```

This example shows the color as background, it is applied via the CSS property "background".

To optimize and compress your CSS code, you can use our [online CSS compressor and optimizer](#) based on csstidy. If you want to create a linear or radial gradient as background or border, check our [CSS Gradient Generator](#).

Hey! You found this booklet interesting? Support Converting Colors with the new Membership Option!

The pro membership hides all ads, plus gives you double the colors in the color bucket, and more awesome pro features!

[Learn more, Memberships starting at \\$2.50/m!](#)

**Follow me
on Twitter!**

@ConvertingColor