

# Converting Colors

Yxy(53.1356, 0.3407, 0.3326)

Have a look what the booklet for  
Yxy(53.1356, 0.3407, 0.3326)  
contains.

<b>Yxy(53.1356, 0.3407, 0.3326)</b> .....	3
<b>Conversions</b> .....	4
<b>Details</b> .....	6
<b>Harmonies</b> .....	12
<b>Previews</b> .....	24
<b>Color Blindness Simulation</b> .....	27
<b>CSS Examples</b> .....	30

# Color

**Yxy(53.1356, 0.3407, 0.3326)**

# Conversions

## Conversions Part 1

Format	Color
Hex	D8BAB7
RGB	216, 186, 183
RGB Percent	85%, 73%, 72%
CMY	0.1529, 0.2706, 0.2823
CMYK	0.00, 0.14, 0.15, 0.15
HSL	5°, 30%, 78%
HSV	5°, 15%, 85%
XYZ	54.4296, 53.1356, 52.1930
YIQ	194.6280, 18.8430, 5.4270

# Conversions

## Conversions Part 2

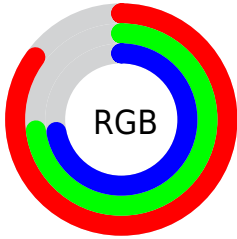
Format	Color
R <sub>Y</sub> B	216, 186, 183
Decimal	14203575
CIE Lab	77.95, 10.23, 5.47
CIE LCh	78, 11.602, 28.116
Yxy	53.1356, 0.3407, 0.3326
Android (android.graphics.Color)	4292393655 (0xFFD8BAB7)
YUV	194.6280, -5.7326, 18.7432
Hunter-Lab	72.8942, 5.7201, 8.5736

# Details

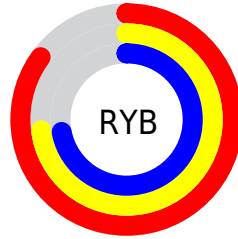
The Yxy color  $53.1356, 0.3407, 0.3326$  is a light color, and the websafe version is hex `FFCCCC`. A complement of this color would be  $62.6320, 0.2895, 0.3254$ , and the grayscale version is  $54.3693, 0.3127, 0.3290$ .

A 20% lighter version of the original color is  $90.9963, 0.3231, 0.3320$ , and  $25.9638, 0.3486, 0.3338$  is the 20% darker color. If you saturate the color by 10%, you get  $44.5894, 0.3645, 0.3352$ , and if you desaturate by 10%, it is  $62.9629, 0.3214, 0.3302$ .

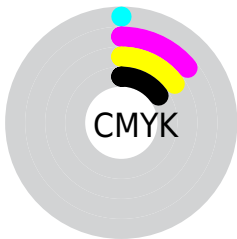
# Distribution



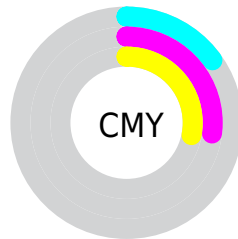
- Red (85%)
- Green (73%)
- Blue (72%)



- Red (85%)
- Yellow (73%)
- Blue (72%)



- Cyan (0%)
- Magenta (14%)
- Yellow (15%)
- Black (15%)




- Cyan (15%)
- Magenta (27%)
- Yellow (28%)


# Brightness & Saturation Gradients

These gradients show how the Yxy color 53.1356, 0.3407, 0.3326 changes by changing the brightness by 10 percent. The first figure shows a shift by +10% for each color and the second figure -10%.


Similar to the brightness gradients but the following saturation gradients show a change of the Yxy color 53.1356, 0.3407, 0.3326 by changing the saturation by 10% instead.





 53.1356, 0.3407,  
0.3326

 53.1356, 0.3407,  
0.3326


398.8051, 0.3269,  
0.3310

 37.9110, 0.3441,  
0.3330


 94.8039, 0.3357,  
0.3321

 25.9136, 0.3484,  
0.3334


122.0164, 0.3339,  
0.3318

 16.7590, 0.3540,  
0.3339


153.9936, 0.3323,  
0.3317

 10.0628, 0.3618,  
0.3345

191.1200, 0.3309,  
0.3315

 5.4406, 0.3731,  
0.3353

233.7800, 0.3297,  
0.3313

 2.5081, 0.3912,  
0.3361

282.3579, 0.3287,

 0.8807, 0.4327,

0.3312

0.3428

337.2382, 0.3278,  
0.3311

0.0000, 1.0000,  
0.0000

0.0000, 0.0000,  
0.0000

53.1356, 0.3407,  
0.3326

53.1356, 0.3407,  
0.3326

44.5894, 0.3645,  
0.3352

62.9629, 0.3214,  
0.3302

37.2646, 0.3936,  
0.3377

74.1135, 0.3057,  
0.3280

31.1076, 0.4287,  
0.3401

86.6364, 0.2930,  
0.3260

26.0580, 0.4695,  
0.3421

93.3416, 0.2894,  
0.3289

■ 22.0498, 0.5143,  
0.3430

■ 19.0103, 0.5594,  
0.3425

■ 16.8570, 0.5985,  
0.3401

■ 15.4938, 0.6254,  
0.3363

■ 15.0859, 0.6340,  
0.3348

# Harmonies

## Analogous

The Analogous color harmony consists of three colors that are next to each other on the color wheel.



53.1356, 0.3304, 0.3194



53.1356, 0.3407, 0.3326



53.1356, 0.3433, 0.3453

# Triad

The Triadic color harmony groups three colors that are evenly spaced from another and form a triangle on the color wheel.



53.1356, 0.3407, 0.3326



53.1356, 0.3095, 0.3506



53.1356, 0.2883, 0.3042

# Complementary

The Complementary color scheme is a pair of colors which are on the opposite of each other on the color wheel.



53.1356, 0.3407, 0.3326



62.6320, 0.2895, 0.3254

# Split Complementary

Split-complementary colors differ from the complementary color scheme. The scheme consists of three colors, the original color and two neighbors of the complement color.



53.1356, 0.2831, 0.3117



53.1356, 0.3407, 0.3326



53.1356, 0.2951, 0.3387

# Square

The Square scheme is like the rectangle color scheme, but the four colors are evenly spaced on the color wheel.



53.1356, 0.3407, 0.3326



53.1356, 0.3250, 0.3562



53.1356, 0.2855, 0.3244



53.1356, 0.3000, 0.3032



# Rectangle

The Rectangle color scheme consists of four colors that form a rectangle on the color wheel.



53.1356, 0.3407, 0.3326



53.1356, 0.3403, 0.3517



53.1356, 0.2855, 0.3244



53.1356, 0.2857, 0.3060

# Sweetspot

The Sweet Spot groups the original color and five complimentary colors.



53.1380, 0.3407, 0.3326



92.0288, 0.3210, 0.3301



53.2912, 0.3166, 0.2944



19.4666, 0.3222, 0.3303



0.0000, 0.0000, 0.0000



21.4041, 0.3127, 0.3290



# Same Dimension

The Same Dimension uses a secret algorithm to generate beautiful new colors.



53.1380, 0.3407, 0.3326



73.5840, 0.3471, 0.3333



60.3867, 0.3378, 0.3514



12.5996, 0.3289, 0.3312



8.9958, 0.6326, 0.3359



0.6063, 0.6120, 0.3522



# Inverse Universe

The Inverse Universe completely reimagines the original color for something new.



62.6320, 0.2895, 0.3254



89.6891, 0.2853, 0.3246



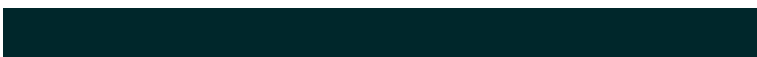
54.8531, 0.2888, 0.3055



13.9068, 0.2983, 0.3268



26.5085, 0.2168, 0.3006

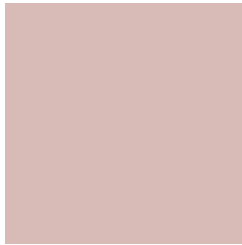


1.6563, 0.2183, 0.3059



# Previews

## White Background



This preview shows how the Yxy color 53.1356, 0.3407, 0.3326 looks on a white background.

## Color Contrast Check

Large Text (above 18pt) WCAG AA × Fail

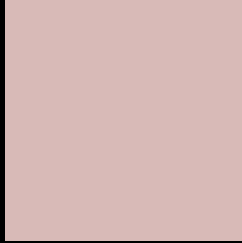
Any Text WCAG AA × Fail

Large Text (above 18pt) WCAG AAA × Fail

Any Text WCAG AAA × Fail



# Black Background



This preview shows how the Yxy color 53.1356, 0.3407, 0.3326 looks on a black background.

## Color Contrast Check

Large Text (above 18pt) WCAG AA ✓ Pass

Any Text WCAG AA ✓ Pass

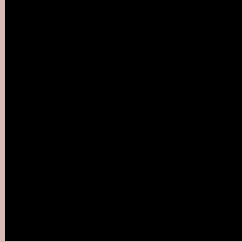
Large Text (above 18pt) WCAG AAA ✓ Pass

Any Text WCAG AAA ✓ Pass

If you want to check with other color combinations, try the [Color Contrast Checker](#).

**Yxy 53.1356, 0.3407, 0.3326**

## **Background**



This preview shows how black text looks on a background with the Yxy color 53.1356, 0.3407, 0.3326.



This preview shows how white text looks on a background with the Yxy color 53.1356, 0.3407, 0.3326.

# Color Blindness Simulation

Color vision deficiency is a very complex topic, and I could not describe the different causes any better than Wikipedia does, so if you want to learn more, you should check out their [article about color blindness](#).

## Dichromacy



### Original Color

53.1356, 0.3407, 0.3326

### Protanopia

53.2502, 0.3222, 0.3364

### Deuteranopia

52.9838, 0.3398, 0.3326



## Tritanopia

53.2636, 0.3304, 0.3128

# Trichromacy



## Original Color

53.1356, 0.3407, 0.3326

## Protanomaly

53.3088, 0.3291, 0.3351

## Deuteranomaly

52.9838, 0.3398, 0.3326

## Tritanomaly

53.2999, 0.3335, 0.3197

# Monochromacy



## Original Color

53.1356, 0.3407, 0.3326

## Achromatopsia

54.5724, 0.3127, 0.3290

## Achromatomaly

54.1574, 0.3225, 0.3302

# CSS Examples

## Text

The CSS property to change the color of the text to Yxy 53.1356, 0.3407, 0.3326 is called "color". The color property can be set on classes, ids or directly on the HTML element.

This example shows how text in the color `rgb(216, 186, 183)` looks like.

```
.text, #text, p{  
    color:rgb(216, 186, 183)  
}
```

If you want to add a text shadow in that color use the text-shadow property, you can generate a text shadow directly with our [CSS Text Shadow Generator](#).

Here you see how black text with a 4 pixel rgb(216, 186, 183) colored shadow looks like.

```
.shadow{ text-shadow: 4px 4px 2px rgb(216, 186, 183) }
```

## Border

The CSS property to change the border of an element to Yxy 53.1356, 0.3407, 0.3326 is called "border". The border property can be set on classes, ids or directly on the HTML element.

This example shows the color as border, it can be applied via the CSS property "border" or "border-color".

```
.border, #border, table{ border:4px solid rgb(216, 186, 183) }
```

If only the border color should be changed use the property `border-color`.

```
.border{ border-color:rgb(216, 186, 183) }
```

If you want to add a box shadow in that color use:

Here you see how a box with a 4 pixel `rgb(216, 186, 183)` colored shadow looks like.

```
.boxshadow{ -moz-box-shadow:4px 4px 4px  
4px rgb(216, 186, 183); -webkit-box-  
shadow:4px 4px 4px 4px rgb(216, 186, 183);  
box-shadow:4px 4px 4px 4px rgb(216, 186,  
183) }
```



# Background

The CSS property to change the background color of an element to Yxy 53.1356, 0.3407, 0.3326 is called "background". The background property can be set on classes, ids or directly on the HTML element.

```
.background, #background, body{  
background: rgb(216, 186, 183) }
```

If only the background color should be changed can be used:

```
.background{ background-color: rgb(216,  
186, 183) }
```

This example shows the color as background, it is applied via the CSS property "background".

To optimize and compress your CSS code, you can use our [online CSS compressor and optimizer](#) based on csstidy. If you want to create a linear or radial gradient as background or border, check our [CSS Gradient Generator](#).

Hey! You found this booklet interesting? Support Converting Colors with the new Membership Option!

The pro membership hides all ads, plus gives you double the colors in the color bucket, and more awesome pro features!

**[Learn more, Memberships starting at \\$2.50/m!](#)**

**Follow me  
on Twitter!**

@ConvertingColor