

Converting Colors

Yxy(53.1822, 0.3357, 0.3426)

Have a look what the booklet for
Yxy(53.1822, 0.3357, 0.3426)
contains.

Yxy(53.3470, 0.3355, 0.3424)	3
<i>Conversions</i>	4
<i>Details</i>	6
<i>Harmonies</i>	12
<i>Previews</i>	24
<i>Color Blindness Simulation</i>	27
<i>CSS Examples</i>	30

Color

Yxy(53.3470, 0.3355, 0.3424)

Conversions

Conversions Part 1

Format	Color
Hex	CFBEB3
RGB	207, 190, 179
RGB Percent	81%, 75%, 70%
CMY	0.1884, 0.2548, 0.2981
CMYK	0.00, 0.08, 0.14, 0.19
HSL	24°, 23%, 76%
HSV	24°, 14%, 81%
XYZ	52.2720, 53.3470, 50.1842
YIQ	193.8290, 13.6630, 0.1830

Conversions

Conversions Part 2

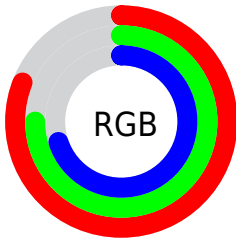
Format	Color
R _Y B	207, 197, 179
Decimal	13614771
CIE Lab	78.08, 4.14, 7.72
CIE LCh	78, 8.755, 61.810
Yxy	53.3470, 0.3355, 0.3424
Android (android.graphics.Color)	4291804851 (0xFFCFBEB3)
YUV	193.8290, -7.3107, 11.5510
Hunter-Lab	73.0390, -0.0709, 10.3899

Details

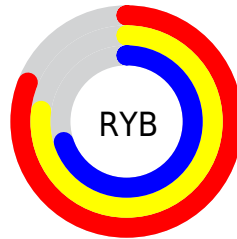
The Yxy color **53.3470, 0.3355, 0.3424** is a light color, and the websafe version is hex **CCCCCC**. A complement of this color would be **53.5313, 0.2919, 0.3152**, and the grayscale version is **53.8783, 0.3127, 0.3290**.

A 20% lighter version of the original color is **93.1697, 0.3252, 0.3397**, and **26.1700, 0.3426, 0.3469** is the 20% darker color. If you saturate the color by 10%, you get **47.3756, 0.3556, 0.3530**, and if you desaturate by 10%, it is **59.9157, 0.3182, 0.3324**.

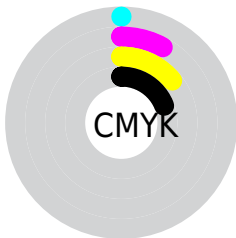
Distribution



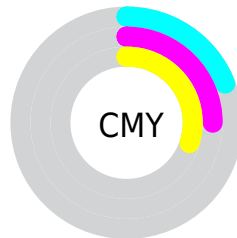
- Red (81%)
- Green (75%)
- Blue (70%)



- Red (81%)
- Yellow (77%)
- Blue (70%)



- Cyan (0%)
- Magenta (8%)
- Yellow (14%)
- Black (19%)




- Cyan (19%)
- Magenta (25%)
- Yellow (30%)

Brightness & Saturation Gradients


These gradients show how the Yxy color 53.3470, 0.3355, 0.3424 changes by changing the brightness by 10 percent. The first figure shows a shift by +10% for each color and the second figure -10%.


Similar to the brightness gradients but the following saturation gradients show a change of the Yxy color 53.3470, 0.3355, 0.3424 by changing the saturation by 10% instead.


 53.3470, 0.3355,
0.3424

 53.3470, 0.3355,
0.3424


399.6150, 0.3243,
0.3359

 38.0799, 0.3382,
0.3439


 95.1148, 0.3315,
0.3401

 26.0447, 0.3417,
0.3459


122.3842, 0.3300,
0.3392

 16.8571, 0.3463,
0.3484


154.4232, 0.3287,
0.3385

 10.1326, 0.3525,
0.3518

191.6161, 0.3276,
0.3378

 5.4870, 0.3616,
0.3567

234.3473, 0.3266,
0.3373

 2.5357, 0.3761,
0.3641

283.0013, 0.3257,

 0.8945, 0.4184,

0.3368

337.9624, 0.3250,
0.3363

0.3915

0.0000, 0.0000,
0.0000

53.3470, 0.3355,
0.3424

53.3470, 0.3355,
0.3424

47.3756, 0.3556,
0.3530

59.9157, 0.3182,
0.3324

41.9770, 0.3789,
0.3638

67.0911, 0.3034,
0.3230

37.1356, 0.4054,
0.3743

74.8913, 0.2907,
0.3144

32.8320, 0.4350,
0.3839

82.8876, 0.2834,
0.3134

29.0459, 0.4668,
0.3914

90.5292, 0.2842,
0.3265

■ 25.7552, 0.4993,
0.3955

■ 91.9989, 0.2843,
0.3289

■ 22.9361, 0.5304,
0.3951

■ 20.5616, 0.5573,
0.3894

■ 19.2383, 0.5725,
0.3836

Harmonies

Analogous

The Analogous color harmony consists of three colors that are next to each other on the color wheel.



53.3470, 0.3343, 0.3331



53.3470, 0.3355, 0.3424



53.3470, 0.3304, 0.3484

Triad

The Triadic color harmony groups three colors that are evenly spaced from another and form a triangle on the color wheel.



53.3470, 0.3355, 0.3424



53.3470, 0.2983, 0.3350



53.3470, 0.3045, 0.3097

Complementary

The Complementary color scheme is a pair of colors which are on the opposite of each other on the color wheel.



53.3470, 0.3355, 0.3424



53.5313, 0.2919, 0.3152

Split Complementary

Split-complementary colors differ from the complementary color scheme. The scheme consists of three colors, the original color and two neighbors of the complement color.



53.3470, 0.2951, 0.3099



53.3470, 0.3355, 0.3424



53.3470, 0.2916, 0.3243

Square

The Square scheme is like the rectangle color scheme, but the four colors are evenly spaced on the color wheel.



53.3470, 0.3355, 0.3424



53.3470, 0.3089, 0.3442



53.3470, 0.2904, 0.3151



53.3470, 0.3163, 0.3145

Rectangle

The Rectangle color scheme consists of four colors that form a rectangle on the color wheel.



53.3470, 0.3355, 0.3424



53.3470, 0.3243, 0.3495



53.3470, 0.2904, 0.3151



53.3470, 0.3010, 0.3092

Sweetspot

The Sweet Spot groups the original color and five complimentary colors.



53.3494, 0.3355, 0.3424



95.4826, 0.3190, 0.3329



49.4917, 0.3229, 0.3083



20.2592, 0.3203, 0.3336



0.0000, 0.0000, 0.0000



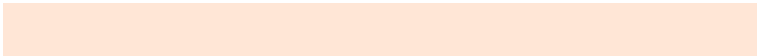
21.4041, 0.3127, 0.3290

Same Dimension

The Same Dimension uses a secret algorithm to generate beautiful new colors.



53.3494, 0.3355, 0.3424



82.8823, 0.3406, 0.3452



59.5530, 0.3333, 0.3584



12.5623, 0.3281, 0.3382



12.2994, 0.5700, 0.3856



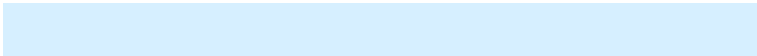
0.8407, 0.5363, 0.4124

Inverse Universe

The Inverse Universe completely reimagines the original color for something new.



53.5313, 0.2919, 0.3152



83.2246, 0.2877, 0.3122



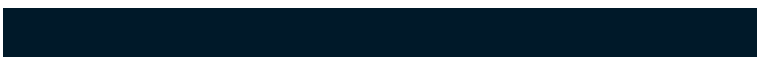
47.6452, 0.2914, 0.2978



12.5917, 0.2983, 0.3196



12.3243, 0.1876, 0.1953



0.8415, 0.1951, 0.2225

Previews

White Background



This preview shows how the Yxy color 53.3470, 0.3355, 0.3424 looks on a white background.

Color Contrast Check

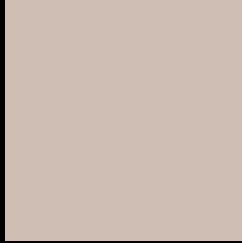
Large Text (above 18pt) WCAG AA × Fail

Any Text WCAG AA × Fail

Large Text (above 18pt) WCAG AAA × Fail

Any Text WCAG AAA × Fail

Black Background



This preview shows how the Yxy color 53.3470, 0.3355, 0.3424 looks on a black background.

Color Contrast Check

Large Text (above 18pt) WCAG AA ✓ Pass

Any Text WCAG AA ✓ Pass

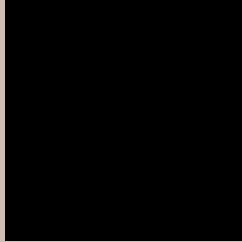
Large Text (above 18pt) WCAG AAA ✓ Pass

Any Text WCAG AAA ✓ Pass

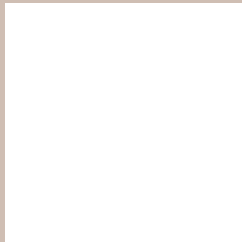
If you want to check with other color combinations, try the [Color Contrast Checker](#).

Yxy 53.3470, 0.3355, 0.3424

Background



This preview shows how black text looks on a background with the Yxy color 53.3470, 0.3355, 0.3424.



This preview shows how white text looks on a background with the Yxy color 53.3470, 0.3355, 0.3424.

Color Blindness Simulation

Color vision deficiency is a very complex topic, and I could not describe the different causes any better than Wikipedia does, so if you want to learn more, you should check out their [article about color blindness](#).

Dichromacy



Original Color

53.3470, 0.3355, 0.3424

Protanopia

53.2739, 0.3285, 0.3438

Deuteranopia

53.1648, 0.3441, 0.3362



Tritanopia

53.4593, 0.3209, 0.3126

Trichromacy



Original Color

53.3470, 0.3355, 0.3424

Protanomaly

53.2534, 0.3312, 0.3425

Deuteranomaly

52.9821, 0.3404, 0.3374

Tritanomaly

53.3720, 0.3263, 0.3231

Monochromacy



Original Color

53.3470, 0.3355, 0.3424

Achromatopsia

53.9479, 0.3127, 0.3290

Achromatomaly

53.9562, 0.3206, 0.3339

CSS Examples

Text

The CSS property to change the color of the text to Yxy 53.3470, 0.3355, 0.3424 is called "color". The color property can be set on classes, ids or directly on the HTML element.

This example shows how text in the color `rgb(207, 190, 179)` looks like.

```
.text, #text, p{  
    color:rgb(207, 190, 179)  
}
```

If you want to add a text shadow in that color use the text-shadow property, you can generate a text shadow directly with our [CSS Text Shadow Generator](#).

Here you see how black text with a 4 pixel rgb(207, 190, 179) colored shadow looks like.

```
.shadow{ text-shadow: 4px 4px 2px rgb(207, 190, 179) }
```

Border

The CSS property to change the border of an element to Yxy 53.3470, 0.3355, 0.3424 is called "border". The border property can be set on classes, ids or directly on the HTML element.

This example shows the color as border, it can be applied via the CSS property "border" or "border-color".

```
.border, #border, table{ border:4px solid rgb(207, 190, 179) }
```

If only the border color should be changed use the property `border-color`.

```
.border{ border-color:rgb(207, 190, 179) }
```

If you want to add a box shadow in that color use:

Here you see how a box with a 4 pixel `rgb(207, 190, 179)` colored shadow looks like.

```
.boxshadow{ -moz-box-shadow:4px 4px 4px  
4px rgb(207, 190, 179); -webkit-box-  
shadow:4px 4px 4px 4px rgb(207, 190, 179);  
box-shadow:4px 4px 4px 4px rgb(207, 190,  
179) }
```


Background

The CSS property to change the background color of an element to Yxy 53.3470, 0.3355, 0.3424 is called "background". The background property can be set on classes, ids or directly on the HTML element.

```
.background, #background, body{  
background: rgb(207, 190, 179) }
```

If only the background color should be changed can be used:

```
.background{ background-color: rgb(207,  
190, 179) }
```

This example shows the color as background, it is applied via the CSS property "background".

To optimize and compress your CSS code, you can use our [online CSS compressor and optimizer](#) based on csstidy. If you want to create a linear or radial gradient as background or border, check our [CSS Gradient Generator](#).

Hey! You found this booklet interesting? Support Converting Colors with the new Membership Option!

The pro membership hides all ads, plus gives you double the colors in the color bucket, and more awesome pro features!

[Learn more, Memberships starting at \\$2.50/m!](#)

**Follow me
on Twitter!**

@ConvertingColor