

Converting Colors

Yxy(53.2860, 0.3330, 0.3417)

Have a look what the booklet for
Yxy(53.2860, 0.3330, 0.3417)
contains.

Yxy(53.1013, 0.3330, 0.3412)	3
<i>Conversions</i>	4
<i>Details</i>	6
<i>Harmonies</i>	12
<i>Previews</i>	24
<i>Color Blindness Simulation</i>	27
<i>CSS Examples</i>	30

Color

Yxy(53.1013, 0.3330, 0.3412)

Conversions

Conversions Part 1

Format	Color
Hex	CDBEB4
RGB	205, 190, 180
RGB Percent	80%, 75%, 71%
CMY	0.1962, 0.2549, 0.2941
CMYK	0.00, 0.07, 0.12, 0.20
HSL	24°, 20%, 75%
HSV	24°, 12%, 80%
XYZ	51.8251, 53.1013, 50.7046
YIQ	193.3450, 12.1500, 0.0700

Conversions

Conversions Part 2

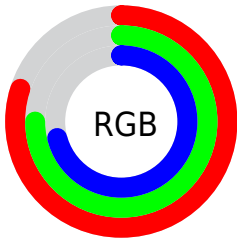
Format	Color
R _Y B	205, 197, 180
Decimal	13483700
CIE Lab	77.93, 3.59, 6.93
CIE LCh	78, 7.808, 62.639
Yxy	53.1013, 0.3330, 0.3412
Android (android.graphics.Color)	4291673780 (0xFFCDBEB4)
YUV	193.3450, -6.5791, 10.2214
Hunter-Lab	72.8706, -0.5756, 9.7545

Details

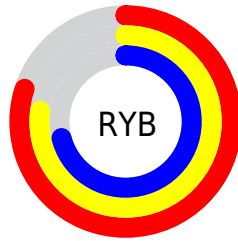
The Yxy color **53.1013, 0.3330, 0.3412** is a light color, and the websafe version is hex **CCCCCC**. A complement of this color would be **53.1340, 0.2940, 0.3165**, and the grayscale version is **53.5763, 0.3127, 0.3290**.

A 20% lighter version of the original color is **93.2277, 0.3246, 0.3388**, and **26.0029, 0.3392, 0.3454** is the 20% darker color. If you saturate the color by 10%, you get **47.2272, 0.3527, 0.3519**, and if you desaturate by 10%, it is **59.5526, 0.3161, 0.3311**.

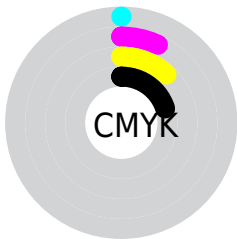
Distribution



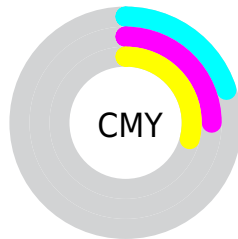
- Red (80%)
- Green (75%)
- Blue (71%)



- Red (80%)
- Yellow (77%)
- Blue (71%)



- Cyan (0%)
- Magenta (7%)
- Yellow (12%)
- Black (20%)





- Cyan (20%)
- Magenta (25%)
- Yellow (29%)

Brightness & Saturation Gradients


These gradients show how the Yxy color 53.1013, 0.3330, 0.3412 changes by changing the brightness by 10 percent. The first figure shows a shift by +10% for each color and the second figure -10%.

Similar to the brightness gradients but the following saturation gradients show a change of the Yxy color 53.1013, 0.3330, 0.3412 by changing the saturation by 10% instead.


 53.1013, 0.3330,
0.3412

 53.1013, 0.3330,
0.3412


398.6736, 0.3230,
0.3353

 37.8836, 0.3354,
0.3426


 94.7534, 0.3294,
0.3391

 25.8924, 0.3385,
0.3444


121.9567, 0.3281,
0.3383

 16.7432, 0.3426,
0.3467


153.9239, 0.3269,
0.3376

 10.0515, 0.3482,
0.3499

191.0395, 0.3259,
0.3370

 5.4331, 0.3563,
0.3544

233.6879, 0.3251,
0.3365

 2.5036, 0.3693,
0.3613

282.2534, 0.3243,

 0.8784, 0.4066,

0.3361

0.3861

337.1206, 0.3236,
0.3357

0.0000, 0.0000,
0.0000

53.1013, 0.3330,
0.3412

53.1013, 0.3330,
0.3412

47.2272, 0.3527,
0.3519

59.5526, 0.3161,
0.3311

41.9069, 0.3754,
0.3628

66.5898, 0.3016,
0.3217

37.1253, 0.4014,
0.3736

74.2302, 0.2891,
0.3130

32.8644, 0.4303,
0.3835

82.0290, 0.2822,
0.3123

29.1047, 0.4616,
0.3914

89.4784, 0.2830,
0.3252

■ 25.8254, 0.4939,
0.3962

■ 91.7162, 0.2832,
0.3289

■ 23.0038, 0.5250,
0.3966

■ 20.6147, 0.5524,
0.3918

■ 19.0230, 0.5707,
0.3851

Harmonies

Analogous

The Analogous color harmony consists of three colors that are next to each other on the color wheel.



53.1013, 0.3321, 0.3329



53.1013, 0.3330, 0.3412



53.1013, 0.3284, 0.3464

Triad

The Triadic color harmony groups three colors that are evenly spaced from another and form a triangle on the color wheel.



53.1013, 0.3330, 0.3412



53.1013, 0.2996, 0.3341



53.1013, 0.3057, 0.3118

Complementary

The Complementary color scheme is a pair of colors which are on the opposite of each other on the color wheel.



53.1013, 0.3330, 0.3412



53.1340, 0.2940, 0.3165

Split Complementary

Split-complementary colors differ from the complementary color scheme. The scheme consists of three colors, the original color and two neighbors of the complement color.



53.1013, 0.2972, 0.3118



53.1013, 0.3330, 0.3412



53.1013, 0.2937, 0.3246

Square

The Square scheme is like the rectangle color scheme, but the four colors are evenly spaced on the color wheel.



53.1013, 0.3330, 0.3412



53.1013, 0.3090, 0.3424



53.1013, 0.2928, 0.3164



53.1013, 0.3162, 0.3162

Rectangle

The Rectangle color scheme consists of four colors that form a rectangle on the color wheel.



53.1013, 0.3330, 0.3412



53.1013, 0.3228, 0.3473



53.1013, 0.2928, 0.3164



53.1013, 0.3025, 0.3113

Sweetspot

The Sweet Spot groups the original color and five complimentary colors.



53.1036, 0.3330, 0.3412



95.5203, 0.3190, 0.3330



49.5640, 0.3221, 0.3110



20.2687, 0.3203, 0.3337



0.0000, 0.0000, 0.0000



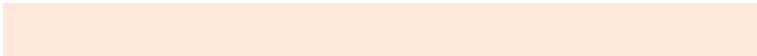
21.4041, 0.3127, 0.3290

Same Dimension

The Same Dimension uses a secret algorithm to generate beautiful new colors.



53.1036, 0.3330, 0.3412



84.0075, 0.3386, 0.3444



58.7401, 0.3311, 0.3559



11.9387, 0.3280, 0.3383



12.0200, 0.5682, 0.3871



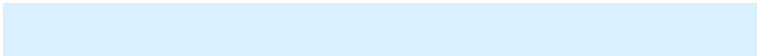
0.7675, 0.5325, 0.4154

Inverse Universe

The Inverse Universe completely reimagines the original color for something new.



53.1340, 0.2940, 0.3165



84.0674, 0.2893, 0.3131



47.7769, 0.2936, 0.3006



11.9439, 0.2983, 0.3195



11.7395, 0.1870, 0.1933



0.7517, 0.1952, 0.2227

Previews

White Background



This preview shows how the Yxy color 53.1013, 0.3330, 0.3412 looks on a white background.

Color Contrast Check

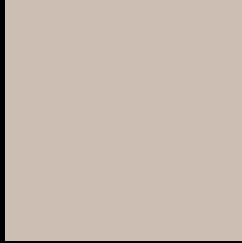
Large Text (above 18pt) WCAG AA × Fail

Any Text WCAG AA × Fail

Large Text (above 18pt) WCAG AAA × Fail

Any Text WCAG AAA × Fail

Black Background



This preview shows how the Yxy color 53.1013, 0.3330, 0.3412 looks on a black background.

Color Contrast Check

Large Text (above 18pt) WCAG AA ✓ Pass

Any Text WCAG AA ✓ Pass

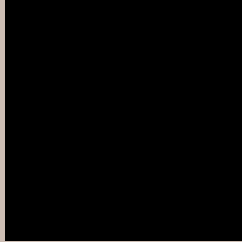
Large Text (above 18pt) WCAG AAA ✓ Pass

Any Text WCAG AAA ✓ Pass

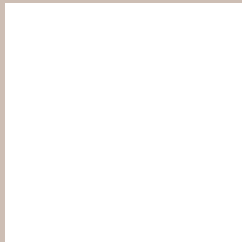
If you want to check with other color combinations, try the [Color Contrast Checker](#).

Yxy 53.1013, 0.3330, 0.3412

Background



This preview shows how black text looks on a background with the Yxy color 53.1013, 0.3330, 0.3412.

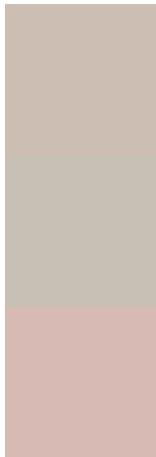


This preview shows how white text looks on a background with the Yxy color 53.1013, 0.3330, 0.3412.

Color Blindness Simulation

Color vision deficiency is a very complex topic, and I could not describe the different causes any better than Wikipedia does, so if you want to learn more, you should check out their [article about color blindness](#).

Dichromacy



Original Color

53.1013, 0.3330, 0.3412

Protanopia

53.1776, 0.3269, 0.3426

Deuteranopia

53.0529, 0.3424, 0.3350



Tritanopia

53.1676, 0.3193, 0.3125

Trichromacy



Original Color

53.1013, 0.3330, 0.3412

Protanomaly

53.0153, 0.3287, 0.3413

Deuteranomaly

52.8739, 0.3387, 0.3362

Tritanomaly

53.0821, 0.3246, 0.3231

Monochromacy



Original Color

53.1013, 0.3330, 0.3412

Achromatopsia

53.3276, 0.3127, 0.3290

Achromatomaly

53.2004, 0.3198, 0.3339

CSS Examples

Text

The CSS property to change the color of the text to Yxy 53.1013, 0.3330, 0.3412 is called "color". The color property can be set on classes, ids or directly on the HTML element.

This example shows how text in the color `rgb(205, 190, 180)` looks like.

```
.text, #text, p{  
    color:rgb(205, 190, 180)  
}
```

If you want to add a text shadow in that color use the text-shadow property, you can generate a text shadow directly with our [CSS Text Shadow Generator](#).

Here you see how black text with a 4 pixel rgb(205, 190, 180) colored shadow looks like.

```
.shadow{ text-shadow: 4px 4px 2px rgb(205, 190, 180) }
```

Border

The CSS property to change the border of an element to Yxy 53.1013, 0.3330, 0.3412 is called "border". The border property can be set on classes, ids or directly on the HTML element.

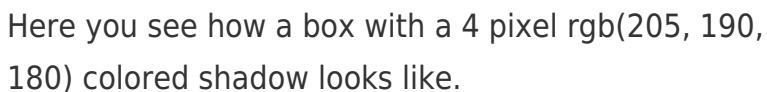
This example shows the color as border, it can be applied via the CSS property "border" or "border-color".

```
.border, #border, table{ border:4px solid rgb(205, 190, 180) }
```

If only the border color should be changed use the property `border-color`.

```
.border{ border-color:rgb(205, 190, 180) }
```

If you want to add a box shadow in that color use:



Here you see how a box with a 4 pixel `rgb(205, 190, 180)` colored shadow looks like.

```
.boxshadow{ -moz-box-shadow:4px 4px 4px 4px rgb(205, 190, 180); -webkit-box-shadow:4px 4px 4px 4px rgb(205, 190, 180); box-shadow:4px 4px 4px 4px rgb(205, 190, 180) }
```


Background

The CSS property to change the background color of an element to Yxy 53.1013, 0.3330, 0.3412 is called "background". The background property can be set on classes, ids or directly on the HTML element.

```
.background, #background, body{  
background: rgb(205, 190, 180) }
```

If only the background color should be changed can be used:

```
.background{ background-color: rgb(205,  
190, 180) }
```

This example shows the color as background, it is applied via the CSS property "background".

To optimize and compress your CSS code, you can use our [online CSS compressor and optimizer](#) based on csstidy. If you want to create a linear or radial gradient as background or border, check our [CSS Gradient Generator](#).

Hey! You found this booklet interesting? Support Converting Colors with the new Membership Option!

The pro membership hides all ads, plus gives you double the colors in the color bucket, and more awesome pro features!

[Learn more, Memberships starting at \\$2.50/m!](#)

**Follow me
on Twitter!**

@ConvertingColor