

Converting Colors

$Y_{xy}(53.3435, 0.3298, 0.3231)$

Have a look what the booklet for
Yxy(53.3435, 0.3298, 0.3231)
contains.

Yxy(53.3435, 0.3298, 0.3231)	3
Conversions	4
Details	6
Harmonies	12
Previews	24
Color Blindness Simulation	27
CSS Examples	30

Color

Yxy(53.3435, 0.3298, 0.3231)

Conversions

Conversions Part 1

Format	Color
Hex	D4BBC0
RGB	212, 187, 192
RGB Percent	83%, 73%, 75%
CMY	0.1684, 0.2667, 0.2470
CMYK	0.00, 0.12, 0.09, 0.17
HSL	348°, 23%, 78%
HSV	348°, 12%, 83%
XYZ	54.4497, 53.3435, 57.3059
YIQ	195.0450, 13.2950, 6.8550

Conversions

Conversions Part 2

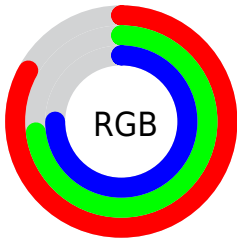
Format	Color
R _Y B	212, 187, 192
Decimal	13941696
CIE Lab	78.08, 9.76, 0.73
CIE LCh	78, 9.783, 4.254
Yxy	53.3435, 0.3298, 0.3231
Android (android.graphics.Color)	4292131776 (0xFFD4BBC0)
YUV	195.0450, -1.5012, 14.8695
Hunter-Lab	73.0366, 5.2597, 4.6056

Details

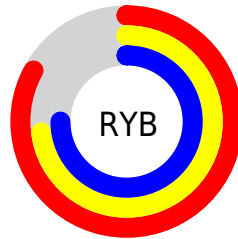
The Yxy color **53.3435, 0.3298, 0.3231** is a light color, and the websafe version is hex **CCCCCC**. A complement of this color would be **62.1842, 0.2980, 0.3350**, and the grayscale version is **54.6098, 0.3127, 0.3290**.

A 20% lighter version of the original color is **92.1385, 0.3175, 0.3242**, and **26.0824, 0.3336, 0.3212** is the 20% darker color. If you saturate the color by 10%, you get **44.2953, 0.3480, 0.3178**, and if you desaturate by 10%, it is **63.8114, 0.3151, 0.3281**.

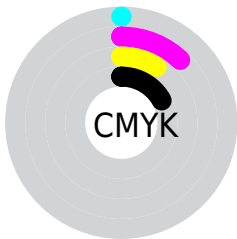
Distribution



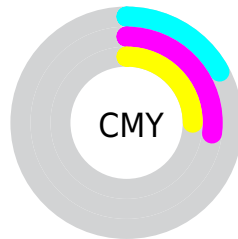
- Red (83%)
- Green (73%)
- Blue (75%)



- Red (83%)
- Yellow (73%)
- Blue (75%)



- Cyan (0%)
- Magenta (12%)
- Yellow (9%)
- Black (17%)




- Cyan (17%)
- Magenta (27%)
- Yellow (25%)

Brightness & Saturation Gradients


These gradients show how the Yxy color 53.3435, 0.3298, 0.3231 changes by changing the brightness by 10 percent. The first figure shows a shift by +10% for each color and the second figure -10%.


Similar to the brightness gradients but the following saturation gradients show a change of the Yxy color 53.3435, 0.3298, 0.3231 by changing the saturation by 10% instead.

 53.3435, 0.3298,
0.3231

 53.3435, 0.3298,
0.3231

399.6016, 0.3214,
0.3260

 38.0771, 0.3318,
0.3224


 95.1096, 0.3268,
0.3241

 26.0425, 0.3344,
0.3215


122.3781, 0.3257,
0.3245

 16.8554, 0.3378,
0.3203


154.4161, 0.3247,
0.3249

 10.1315, 0.3425,
0.3186

191.6079, 0.3239,
0.3252

 5.4862, 0.3493,
0.3162

234.3379, 0.3231,
0.3254

 2.5353, 0.3600,
0.3123

282.9906, 0.3225,

 0.8942, 0.3798,

0.3256

0.3052

337.9504, 0.3219,
0.3258

0.0000, 1.0000,
0.0000

0.0000, 0.0000,
0.0000

53.3435, 0.3298,
0.3231

53.3435, 0.3298,
0.3231

44.2953, 0.3480,
0.3178

63.8114, 0.3151,
0.3281

36.5988, 0.3704,
0.3123

75.7493, 0.3032,
0.3328

30.1909, 0.3978,
0.3070

89.2133, 0.2935,
0.3370

25.0010, 0.4304,
0.3024

92.7455, 0.2872,
0.3289

■ 20.9512, 0.4680,
0.2992

■ 17.9550, 0.5089,
0.2983

■ 15.9130, 0.5498,
0.3007

■ 14.7068, 0.5859,
0.3066

■ 14.1769, 0.6092,
0.3130

Harmonies

Analogous

The Analogous color harmony consists of three colors that are next to each other on the color wheel.



53.3435, 0.3178, 0.3134



53.3435, 0.3298, 0.3231



53.3435, 0.3373, 0.3344

Triad

The Triadic color harmony groups three colors that are evenly spaced from another and form a triangle on the color wheel.



53.3435, 0.3298, 0.3231



53.3435, 0.3205, 0.3513



53.3435, 0.2881, 0.3128

Complementary

The Complementary color scheme is a pair of colors which are on the opposite of each other on the color wheel.



53.3435, 0.3298, 0.3231



62.1842, 0.2980, 0.3350

Split Complementary

Split-complementary colors differ from the complementary color scheme. The scheme consists of three colors, the original color and two neighbors of the complement color.



53.3435, 0.2888, 0.3228



53.3435, 0.3298, 0.3231



53.3435, 0.3073, 0.3454

Square

The Square scheme is like the rectangle color scheme, but the four colors are evenly spaced on the color wheel.



53.3435, 0.3298, 0.3231



53.3435, 0.3318, 0.3510



53.3435, 0.2958, 0.3348



53.3435, 0.2938, 0.3074

Rectangle

The Rectangle color scheme consists of four colors that form a rectangle on the color wheel.



53.3435, 0.3298, 0.3231



53.3435, 0.3386, 0.3415



53.3435, 0.2958, 0.3348



53.3435, 0.2876, 0.3157

Sweetspot

The Sweet Spot groups the original color and five complimentary colors.



53.3459, 0.3298, 0.3231



93.1499, 0.3181, 0.3270



53.5014, 0.3097, 0.2997



19.6709, 0.3191, 0.3267



0.0000, 0.0000, 0.0000



21.4041, 0.3127, 0.3290

Same Dimension

The Same Dimension uses a secret algorithm to generate beautiful new colors.



53.3459, 0.3298, 0.3231



77.5965, 0.3337, 0.3219



56.2153, 0.3328, 0.3374



12.4612, 0.3260, 0.3243



8.7584, 0.6060, 0.3112



0.5403, 0.5580, 0.2847

Inverse Universe

The Inverse Universe completely reimagines the original color for something new.



53.3459, 0.3298, 0.3231



77.5965, 0.3337, 0.3219



58.9592, 0.2946, 0.3204



12.4612, 0.3260, 0.3243



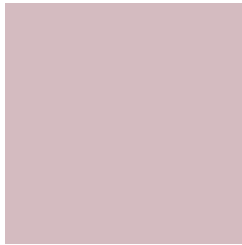
8.7584, 0.6060, 0.3112



0.5403, 0.5580, 0.2847

Previews

White Background



This preview shows how the Yxy color 53.3435, 0.3298, 0.3231 looks on a white background.

Color Contrast Check

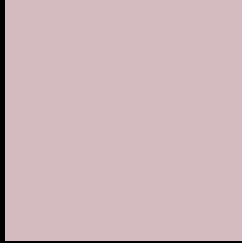
Large Text (above 18pt) WCAG AA × Fail

Any Text WCAG AA × Fail

Large Text (above 18pt) WCAG AAA × Fail

Any Text WCAG AAA × Fail

Black Background



This preview shows how the Yxy color 53.3435, 0.3298, 0.3231 looks on a black background.

Color Contrast Check

Large Text (above 18pt) WCAG AA ✓ Pass

Any Text WCAG AA ✓ Pass

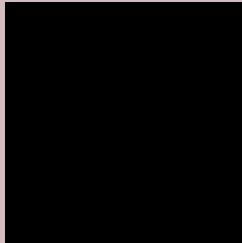
Large Text (above 18pt) WCAG AAA ✓ Pass

Any Text WCAG AAA ✓ Pass

If you want to check with other color combinations, try the [Color Contrast Checker](#).

Yxy 53.3435, 0.3298, 0.3231

Background



This preview shows how black text looks on a background with the Yxy color 53.3435, 0.3298, 0.3231.



This preview shows how white text looks on a background with the Yxy color 53.3435, 0.3298, 0.3231.

Color Blindness Simulation

Color vision deficiency is a very complex topic, and I could not describe the different causes any better than Wikipedia does, so if you want to learn more, you should check out their [article about color blindness](#).

Dichromacy



Original Color

53.3435, 0.3298, 0.3231

Protanopia

53.3752, 0.3137, 0.3253

Deuteranopia

53.3435, 0.3298, 0.3231



Tritanopia

53.4341, 0.3243, 0.3127

Trichromacy



Original Color

53.3435, 0.3298, 0.3231

Protanomaly

53.2785, 0.3195, 0.3242

Deuteranomaly

53.3435, 0.3298, 0.3231

Tritanomaly

53.2952, 0.3267, 0.3161

Monochromacy



Original Color

53.3435, 0.3298, 0.3231

Achromatopsia

54.5724, 0.3127, 0.3290

Achromatomaly

54.0118, 0.3185, 0.3266

CSS Examples

Text

The CSS property to change the color of the text to Yxy 53.3435, 0.3298, 0.3231 is called "color". The color property can be set on classes, ids or directly on the HTML element.

This example shows how text in the color `rgb(212, 187, 192)` looks like.

```
.text, #text, p{  
    color:rgb(212, 187, 192)  
}
```

If you want to add a text shadow in that color use the text-shadow property, you can generate a text shadow directly with our [CSS Text Shadow Generator](#).

Here you see how black text with a 4 pixel rgb(212, 187, 192) colored shadow looks like.

```
.shadow{ text-shadow: 4px 4px 2px rgb(212, 187, 192) }
```

Border

The CSS property to change the border of an element to Yxy 53.3435, 0.3298, 0.3231 is called "border". The border property can be set on classes, ids or directly on the HTML element.

This example shows the color as border, it can be applied via the CSS property "border" or "border-color".

```
.border, #border, table{ border:4px solid rgb(212, 187, 192) }
```

If only the border color should be changed use the property `border-color`.

```
.border{ border-color:rgb(212, 187, 192) }
```

If you want to add a box shadow in that color use:

Here you see how a box with a 4 pixel `rgb(212, 187, 192)` colored shadow looks like.

```
.boxshadow{ -moz-box-shadow:4px 4px 4px  
4px rgb(212, 187, 192); -webkit-box-  
shadow:4px 4px 4px 4px rgb(212, 187, 192);  
box-shadow:4px 4px 4px 4px rgb(212, 187,  
192) }
```


Background

The CSS property to change the background color of an element to Yxy 53.3435, 0.3298, 0.3231 is called "background". The background property can be set on classes, ids or directly on the HTML element.

```
.background, #background, body{  
background: rgb(212, 187, 192) }
```

If only the background color should be changed can be used:

```
.background{ background-color: rgb(212,  
187, 192) }
```

This example shows the color as background, it is applied via the CSS property "background".

To optimize and compress your CSS code, you can use our [online CSS compressor and optimizer](#) based on csstidy. If you want to create a linear or radial gradient as background or border, check our [CSS Gradient Generator](#).

Hey! You found this booklet interesting? Support Converting Colors with the new Membership Option!

The pro membership hides all ads, plus gives you double the colors in the color bucket, and more awesome pro features!

[Learn more, Memberships starting at \\$2.50/m!](#)

**Follow me
on Twitter!**

@ConvertingColor