

Converting Colors

Yxy(53.3440, 0.3410, 0.3354)

Have a look what the booklet for
Yxy(53.3440, 0.3410, 0.3354)
contains.

Yxy(53.3651, 0.3405, 0.3350)	3
<i>Conversions</i>	4
<i>Details</i>	6
<i>Harmonies</i>	12
<i>Previews</i>	24
<i>Color Blindness Simulation</i>	27
<i>CSS Examples</i>	30

Color

Yxy(53.3651, 0.3405, 0.3350)

Conversions

Conversions Part 1

Format	Color
Hex	D7BBB6
RGB	215, 187, 182
RGB Percent	84%, 73%, 71%
CMY	0.1568, 0.2667, 0.2863
CMYK	0.00, 0.13, 0.15, 0.16
HSL	9°, 29%, 78%
HSV	9°, 15%, 84%
XYZ	54.2412, 53.3651, 51.6925
YIQ	194.8020, 18.2930, 4.3810

Conversions

Conversions Part 2

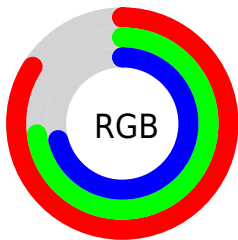
Format	Color
R _Y B	215, 188, 182
Decimal	14138294
CIE Lab	78.09, 9.17, 6.20
CIE LCh	78, 11.071, 34.070
Yxy	53.3651, 0.3405, 0.3350
Android (android.graphics.Color)	4292328374 (0xFFD7BBB6)
YUV	194.8020, -6.3114, 17.7136
Hunter-Lab	73.0514, 4.6976, 9.1814

Details

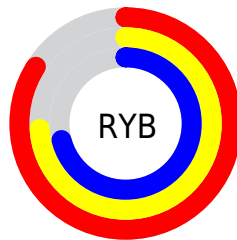
The Yxy color **53.3651, 0.3405, 0.3350** is a light color, and the websafe version is hex **CCCCCC**. A complement of this color would be **60.9498, 0.2893, 0.3229**, and the grayscale version is **54.4813, 0.3127, 0.3290**.

A 20% lighter version of the original color is **91.5342, 0.3236, 0.3339**, and **26.1088, 0.3483, 0.3370** is the 20% darker color. If you saturate the color by 10%, you get **45.2912, 0.3637, 0.3392**, and if you desaturate by 10%, it is **62.5634, 0.3215, 0.3310**.

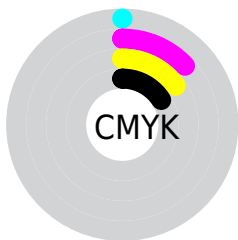
Distribution



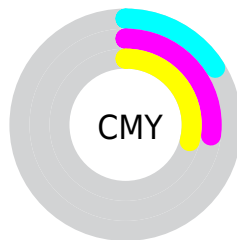
- Red (84%)
- Green (73%)
- Blue (71%)



- Red (84%)
- Yellow (74%)
- Blue (71%)



- Cyan (0%)
- Magenta (13%)
- Yellow (15%)
- Black (16%)





- Cyan (16%)
- Magenta (27%)
- Yellow (29%)

Brightness & Saturation Gradients


These gradients show how the Yxy color 53.3651, 0.3405, 0.3350 changes by changing the brightness by 10 percent. The first figure shows a shift by +10% for each color and the second figure -10%.


Similar to the brightness gradients but the following saturation gradients show a change of the Yxy color 53.3651, 0.3405, 0.3350 by changing the saturation by 10% instead.


 53.3651, 0.3405,
0.3350

 53.3651, 0.3405,
0.3350


399.6843, 0.3268,
0.3322

 38.0943, 0.3438,
0.3356


 95.1414, 0.3356,
0.3340

 26.0559, 0.3481,
0.3364


122.4157, 0.3337,
0.3337

 16.8655, 0.3537,
0.3374


154.4599, 0.3321,
0.3333

 10.1386, 0.3614,
0.3387

191.6585, 0.3308,
0.3331

 5.4910, 0.3726,
0.3403

234.3959, 0.3296,
0.3328

 2.5381, 0.3905,
0.3426

283.0563, 0.3286,

 0.8957, 0.4330,

0.3326

0.3534

338.0244, 0.3277,
0.3324

0.0000, 1.0000,
0.0000

0.0000, 0.0000,
0.0000

53.3651, 0.3405,
0.3350

53.3651, 0.3405,
0.3350

45.2912, 0.3637,
0.3392

62.5634, 0.3215,
0.3310

38.2916, 0.3918,
0.3435

72.9195, 0.3059,
0.3273

32.3230, 0.4253,
0.3475

84.4745, 0.2930,
0.3240

27.3364, 0.4640,
0.3508

93.1899, 0.2889,
0.3289

■ 23.2787, 0.5066,
0.3526

■ 20.0919, 0.5498,
0.3522

■ 17.7112, 0.5885,
0.3490

■ 16.0623, 0.6170,
0.3432

■ 15.5157, 0.6268,
0.3405

Harmonies

Analogous

The Analogous color harmony consists of three colors that are next to each other on the color wheel.



53.3651, 0.3320, 0.3222



53.3651, 0.3405, 0.3350



53.3651, 0.3414, 0.3466

Triad

The Triadic color harmony groups three colors that are evenly spaced from another and form a triangle on the color wheel.



53.3651, 0.3405, 0.3350



53.3651, 0.3067, 0.3477



53.3651, 0.2912, 0.3046

Complementary

The Complementary color scheme is a pair of colors which are on the opposite of each other on the color wheel.



53.3651, 0.3405, 0.3350



60.9498, 0.2893, 0.3229

Split Complementary

Split-complementary colors differ from the complementary color scheme. The scheme consists of three colors, the original color and two neighbors of the complement color.



53.3651, 0.2848, 0.3107



53.3651, 0.3405, 0.3350



53.3651, 0.2936, 0.3356

Square

The Square scheme is like the rectangle color scheme, but the four colors are evenly spaced on the color wheel.



53.3651, 0.3405, 0.3350



53.3651, 0.3216, 0.3544



53.3651, 0.2857, 0.3220



53.3651, 0.3034, 0.3050

Rectangle

The Rectangle color scheme consists of four colors that form a rectangle on the color wheel.



53.3651, 0.3405, 0.3350



53.3651, 0.3375, 0.3521



53.3651, 0.2857, 0.3220



53.3651, 0.2884, 0.3060

Sweetspot

The Sweet Spot groups the original color and five complimentary colors.



53.3675, 0.3405, 0.3350



92.4976, 0.3209, 0.3309



52.5588, 0.3184, 0.2967



19.5801, 0.3221, 0.3312



0.0000, 0.0000, 0.0000



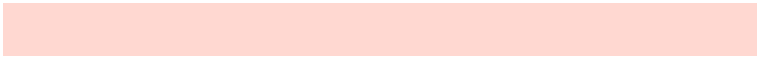
21.4041, 0.3127, 0.3290

Same Dimension

The Same Dimension uses a secret algorithm to generate beautiful new colors.



53.3675, 0.3405, 0.3350



75.0109, 0.3466, 0.3362



60.7560, 0.3376, 0.3540



12.7217, 0.3287, 0.3326



9.3757, 0.6249, 0.3420



0.6639, 0.5956, 0.3653

Inverse Universe

The Inverse Universe completely reimagines the original color for something new.



60.9498, 0.2893, 0.3229



87.9493, 0.2851, 0.3217



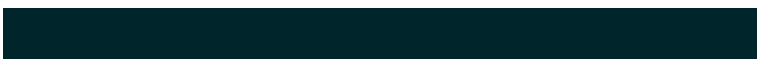
53.2354, 0.2885, 0.3027



13.7720, 0.2983, 0.3254



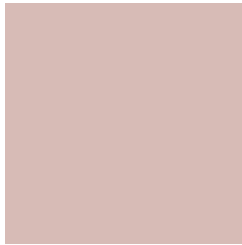
23.1681, 0.2112, 0.2804



1.4863, 0.2138, 0.2896

Previews

White Background



This preview shows how the Yxy color 53.3651, 0.3405, 0.3350 looks on a white background.

Color Contrast Check

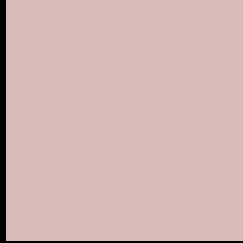
Large Text (above 18pt) WCAG AA × Fail

Any Text WCAG AA × Fail

Large Text (above 18pt) WCAG AAA × Fail

Any Text WCAG AAA × Fail

Black Background



This preview shows how the Yxy color 53.3651, 0.3405, 0.3350 looks on a black background.

Color Contrast Check

Large Text (above 18pt) WCAG AA ✓ Pass

Any Text WCAG AA ✓ Pass

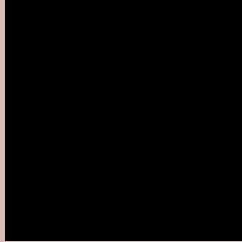
Large Text (above 18pt) WCAG AAA ✓ Pass

Any Text WCAG AAA ✓ Pass

If you want to check with other color combinations, try the [Color Contrast Checker](#).

Yxy 53.3651, 0.3405, 0.3350

Background



This preview shows how black text looks on a background with the Yxy color 53.3651, 0.3405, 0.3350.



This preview shows how white text looks on a background with the Yxy color 53.3651, 0.3405, 0.3350.

Color Blindness Simulation

Color vision deficiency is a very complex topic, and I could not describe the different causes any better than Wikipedia does, so if you want to learn more, you should check out their [article about color blindness](#).

Dichromacy



Original Color

53.3651, 0.3405, 0.3350

Protanopia

53.3442, 0.3238, 0.3376

Deuteranopia

53.5170, 0.3413, 0.3350



Tritanopia

53.1562, 0.3287, 0.3117

Trichromacy



Original Color

53.3651, 0.3405, 0.3350

Protanomaly

53.2667, 0.3298, 0.3363

Deuteranomaly

53.5170, 0.3413, 0.3350

Tritanomaly

53.1471, 0.3326, 0.3197

Monochromacy



Original Color

53.3651, 0.3405, 0.3350

Achromatopsia

54.5724, 0.3127, 0.3290

Achromatomaly

53.9735, 0.3224, 0.3315

CSS Examples

Text

The CSS property to change the color of the text to Yxy 53.3651, 0.3405, 0.3350 is called "color". The color property can be set on classes, ids or directly on the HTML element.

This example shows how text in the color `rgb(215, 187, 182)` looks like.

```
.text, #text, p{  
    color:rgb(215, 187, 182)  
}
```

If you want to add a text shadow in that color use the text-shadow property, you can generate a text shadow directly with our [CSS Text Shadow Generator](#).

Here you see how black text with a 4 pixel rgb(215, 187, 182) colored shadow looks like.

```
.shadow{ text-shadow: 4px 4px 2px rgb(215, 187, 182) }
```

Border

The CSS property to change the border of an element to Yxy 53.3651, 0.3405, 0.3350 is called "border". The border property can be set on classes, ids or directly on the HTML element.

This example shows the color as border, it can be applied via the CSS property "border" or "border-color".

```
.border, #border, table{ border:4px solid rgb(215, 187, 182) }
```

If only the border color should be changed use the property `border-color`.

```
.border{ border-color:rgb(215, 187, 182) }
```

If you want to add a box shadow in that color use:

Here you see how a box with a 4 pixel `rgb(215, 187, 182)` colored shadow looks like.

```
.boxshadow{ -moz-box-shadow:4px 4px 4px  
4px rgb(215, 187, 182); -webkit-box-  
shadow:4px 4px 4px 4px rgb(215, 187, 182);  
box-shadow:4px 4px 4px 4px rgb(215, 187,  
182) }
```


Background

The CSS property to change the background color of an element to Yxy 53.3651, 0.3405, 0.3350 is called "background". The background property can be set on classes, ids or directly on the HTML element.

```
.background, #background, body{  
background: rgb(215, 187, 182) }
```

If only the background color should be changed can be used:

```
.background{ background-color: rgb(215,  
187, 182) }
```

This example shows the color as background, it is applied via the CSS property "background".

To optimize and compress your CSS code, you can use our [online CSS compressor and optimizer](#) based on csstidy. If you want to create a linear or radial gradient as background or border, check our [CSS Gradient Generator](#).

Hey! You found this booklet interesting? Support Converting Colors with the new Membership Option!

The pro membership hides all ads, plus gives you double the colors in the color bucket, and more awesome pro features!

[Learn more, Memberships starting at \\$2.50/m!](#)

**Follow me
on Twitter!**

@ConvertingColor