

# Converting Colors

Yxy(53.4141, 0.3347, 0.3247)

Have a look what the booklet for  
Yxy(53.4141, 0.3347, 0.3247)  
contains.

<b>Yxy(53.4344, 0.3349, 0.3244)</b> .....	3
<b>Conversions</b> .....	4
<b>Details</b> .....	6
<b>Harmonies</b> .....	12
<b>Previews</b> .....	24
<b>Color Blindness Simulation</b> .....	27
<b>CSS Examples</b> .....	30

# Color

**Yxy(53.4344, 0.3349, 0.3244)**

# Conversions

## Conversions Part 1

Format	Color
Hex	D8BABE
RGB	216, 186, 190
RGB Percent	85%, 73%, 75%
CMY	0.1531, 0.2705, 0.2549
CMYK	0.00, 0.14, 0.12, 0.15
HSL	352°, 28%, 79%
HSV	352°, 14%, 85%
XYZ	55.1639, 53.4344, 56.1193
YIQ	195.4260, 16.5960, 7.6040

# Conversions

## Conversions Part 2

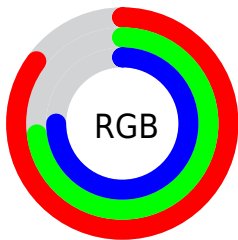
<b>Format</b>	<b>Color</b>
R <sub>Y</sub> B	216, 186, 190
Decimal	14203582
CIE Lab	78.13, 11.33, 1.94
CIE LCh	78, 11.499, 9.714
Yxy	53.4344, 0.3349, 0.3244
Android (android.graphics.Color)	4292393662 (0xFFD8BABE)
YUV	195.4260, -2.6750, 18.0434
Hunter-Lab	73.0988, 6.7818, 5.6512

# Details

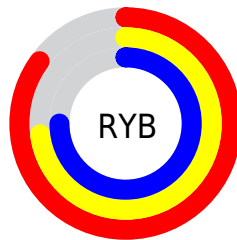
The Yxy color **53.4344, 0.3349, 0.3244** is a light color, and the websafe version is hex **FFCCCC**. A complement of this color would be **64.2882, 0.2942, 0.3337**, and the grayscale version is **54.8486, 0.3127, 0.3290**.

A 20% lighter version of the original color is **91.4181, 0.3188, 0.3252**, and **26.1583, 0.3407, 0.3229** is the 20% darker color. If you saturate the color by 10%, you get **44.2464, 0.3556, 0.3209**, and if you desaturate by 10%, it is **64.1076, 0.3182, 0.3278**.

# Distribution



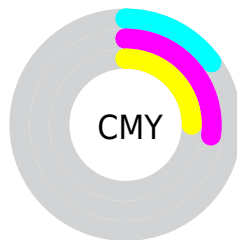
- Red (85%)
- Green (73%)
- Blue (75%)



- Red (85%)
- Yellow (73%)
- Blue (75%)



- Cyan (0%)
- Magenta (14%)
- Yellow (12%)
- Black (15%)




- Cyan (15%)
- Magenta (27%)
- Yellow (25%)

# Brightness & Saturation Gradients

These gradients show how the Yxy color 53.4344, 0.3349, 0.3244 changes by changing the brightness by 10 percent. The first figure shows a shift by +10% for each color and the second figure -10%.

Similar to the brightness gradients but the following saturation gradients show a change of the Yxy color 53.4344, 0.3349, 0.3244 by changing the saturation by 10% instead.





 53.4344, 0.3349,  
0.3244

 53.4344, 0.3349,  
0.3244

399.9495, 0.3240,  
0.3267

 38.1497, 0.3376,  
0.3238


 95.2433, 0.3310,  
0.3252

 26.0989, 0.3409,  
0.3231

122.5362, 0.3295,  
0.3256

 16.8976, 0.3454,  
0.3221

154.6007, 0.3283,  
0.3258

 10.1615, 0.3514,  
0.3207

191.8210, 0.3272,  
0.3261

 5.5062, 0.3603,  
0.3186

234.5817, 0.3262,  
0.3263

 2.5472, 0.3744,  
0.3152

283.2671, 0.3254,

 0.9002, 0.4008,

0.3264

0.3092

338.2615, 0.3247,  
0.3266

0.0000, 1.0000,  
0.0000

0.0000, 0.0000,  
0.0000

53.4344, 0.3349,  
0.3244

53.4344, 0.3349,  
0.3244

44.2464, 0.3556,  
0.3209

64.1076, 0.3182,  
0.3278

36.4710, 0.3812,  
0.3173

76.3204, 0.3048,  
0.3309

30.0402, 0.4123,  
0.3139

90.1329, 0.2940,  
0.3337

24.8774, 0.4493,  
0.3111

93.3337, 0.2894,  
0.3289

■ 20.8987, 0.4913,  
0.3096

■ 18.0096, 0.5355,  
0.3100

■ 16.1013, 0.5770,  
0.3129

■ 15.0423, 0.6099,  
0.3181

■ 14.6809, 0.6245,  
0.3214

# Harmonies

## Analogous

The Analogous color harmony consists of three colors that are next to each other on the color wheel.



53.4344, 0.3214, 0.3126



53.4344, 0.3349, 0.3244



53.4344, 0.3424, 0.3377

# Triad

The Triadic color harmony groups three colors that are evenly spaced from another and form a triangle on the color wheel.



53.4344, 0.3349, 0.3244



53.4344, 0.3191, 0.3546



53.4344, 0.2845, 0.3083

# Complementary

The Complementary color scheme is a pair of colors which are on the opposite of each other on the color wheel.



53.4344, 0.3349, 0.3244



64.2882, 0.2942, 0.3337

# Split Complementary

Split-complementary colors differ from the complementary color scheme. The scheme consists of three colors, the original color and two neighbors of the complement color.



53.4344, 0.2839, 0.3192



53.4344, 0.3349, 0.3244



53.4344, 0.3036, 0.3464

# Square

The Square scheme is like the rectangle color scheme, but the four colors are evenly spaced on the color wheel.



53.4344, 0.3349, 0.3244



53.4344, 0.3330, 0.3555



53.4344, 0.2909, 0.3332



53.4344, 0.2924, 0.3033



# Rectangle

The Rectangle color scheme consists of four colors that form a rectangle on the color wheel.



53.4344, 0.3349, 0.3244



53.4344, 0.3429, 0.3457



53.4344, 0.2909, 0.3332



53.4344, 0.2835, 0.3114

# Sweetspot

The Sweet Spot groups the original color and five complimentary colors.



53.4368, 0.3349, 0.3244



93.1072, 0.3185, 0.3277



54.0746, 0.3111, 0.2946



19.6601, 0.3196, 0.3275



0.0000, 0.0000, 0.0000



21.4041, 0.3127, 0.3290



# Same Dimension

The Same Dimension uses a secret algorithm to generate beautiful new colors.



53.4368, 0.3349, 0.3244



73.2033, 0.3412, 0.3233



58.0716, 0.3364, 0.3419



12.4474, 0.3270, 0.3259



8.7018, 0.6219, 0.3199



0.5338, 0.5825, 0.2982



# Inverse Universe

The Inverse Universe completely reimagines the original color for something new.



53.4368, 0.3349, 0.3244



73.2033, 0.3412, 0.3233



59.0529, 0.2913, 0.3158



12.4474, 0.3270, 0.3259



8.7018, 0.6219, 0.3199



0.5338, 0.5825, 0.2982



# Previews

## White Background



This preview shows how the Yxy color 53.4344, 0.3349, 0.3244 looks on a white background.

## Color Contrast Check

Large Text (above 18pt) WCAG AA × Fail

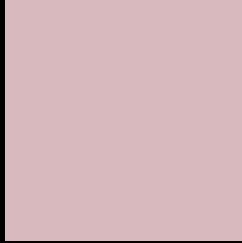
Any Text WCAG AA × Fail

Large Text (above 18pt) WCAG AAA × Fail

Any Text WCAG AAA × Fail



# Black Background



This preview shows how the Yxy color 53.4344, 0.3349, 0.3244 looks on a black background.

## Color Contrast Check

Large Text (above 18pt) WCAG AA ✓ Pass

Any Text WCAG AA ✓ Pass

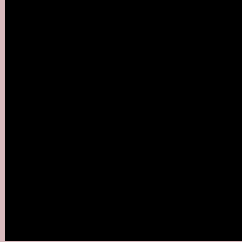
Large Text (above 18pt) WCAG AAA ✓ Pass

Any Text WCAG AAA ✓ Pass

If you want to check with other color combinations, try the [Color Contrast Checker](#).

**Yxy 53.4344, 0.3349, 0.3244**

## Background



This preview shows how black text looks on a background with the Yxy color 53.4344, 0.3349, 0.3244.



This preview shows how white text looks on a background with the Yxy color 53.4344, 0.3349, 0.3244.

# Color Blindness Simulation

Color vision deficiency is a very complex topic, and I could not describe the different causes any better than Wikipedia does, so if you want to learn more, you should check out their [article about color blindness](#).

## Dichromacy



### Original Color

53.4344, 0.3349, 0.3244

### Protanopia

53.4646, 0.3153, 0.3266

### Deuteranopia

53.4045, 0.3322, 0.3255



## Tritanopia

53.5732, 0.3286, 0.3128

# Trichromacy



## Original Color

53.4344, 0.3349, 0.3244

## Protanomaly

53.5145, 0.3219, 0.3254

## Deuteranomaly

53.5545, 0.3331, 0.3255

## Tritanomaly

53.4352, 0.3310, 0.3163

# Monochromacy



## Original Color

53.4344, 0.3349, 0.3244

## Achromatopsia

54.5724, 0.3127, 0.3290

## Achromatomaly

54.2460, 0.3209, 0.3278

# CSS Examples

## Text

The CSS property to change the color of the text to Yxy 53.4344, 0.3349, 0.3244 is called "color". The color property can be set on classes, ids or directly on the HTML element.

This example shows how text in the color `rgb(216, 186, 190)` looks like.

```
.text, #text, p{  
    color:rgb(216, 186, 190)  
}
```

If you want to add a text shadow in that color use the text-shadow property, you can generate a text shadow directly with our [CSS Text Shadow Generator](#).

Here you see how black text with a 4 pixel rgb(216, 186, 190) colored shadow looks like.

```
.shadow{ text-shadow: 4px 4px 2px rgb(216, 186, 190) }
```

## Border

The CSS property to change the border of an element to Yxy 53.4344, 0.3349, 0.3244 is called "border". The border property can be set on classes, ids or directly on the HTML element.

This example shows the color as border, it can be applied via the CSS property "border" or "border-color".

```
.border, #border, table{ border:4px solid rgb(216, 186, 190) }
```

If only the border color should be changed use the property `border-color`.

```
.border{ border-color:rgb(216, 186, 190) }
```

If you want to add a box shadow in that color use:

Here you see how a box with a 4 pixel `rgb(216, 186, 190)` colored shadow looks like.

```
.boxshadow{ -moz-box-shadow:4px 4px 4px  
4px rgb(216, 186, 190); -webkit-box-  
shadow:4px 4px 4px 4px rgb(216, 186, 190);  
box-shadow:4px 4px 4px 4px rgb(216, 186,  
190) }
```



# Background

The CSS property to change the background color of an element to Yxy 53.4344, 0.3349, 0.3244 is called "background". The background property can be set on classes, ids or directly on the HTML element.

```
.background, #background, body{  
background: rgb(216, 186, 190) }
```

If only the background color should be changed can be used:

```
.background{ background-color: rgb(216,  
186, 190) }
```

This example shows the color as background, it is applied via the CSS property "background".

To optimize and compress your CSS code, you can use our [online CSS compressor and optimizer](#) based on csstidy. If you want to create a linear or radial gradient as background or border, check our [CSS Gradient Generator](#).

Hey! You found this booklet interesting? Support Converting Colors with the new Membership Option!

The pro membership hides all ads, plus gives you double the colors in the color bucket, and more awesome pro features!

**[Learn more, Memberships starting at \\$2.50/m!](#)**

**Follow me  
on Twitter!**

@ConvertingColor