

Converting Colors

Yxy(53.4978, 0.3537, 0.3446)

Have a look what the booklet for
Yxy(53.4978, 0.3537, 0.3446)
contains.

Yxy(53.5071, 0.3534, 0.3443)	3
Conversions	4
Details	6
Harmonies	12
Previews	24
Color Blindness Simulation	27
CSS Examples	30

Color

Yxy(53.5071, 0.3534, 0.3443)

Conversions

Conversions Part 1

Format	Color
Hex	DDBAAD
RGB	221, 186, 173
RGB Percent	87%, 73%, 68%
CMY	0.1333, 0.2706, 0.3215
CMYK	0.00, 0.16, 0.22, 0.13
HSL	16°, 41%, 77%
HSV	16°, 22%, 87%
XYZ	54.9213, 53.5071, 46.9799
YIQ	194.9830, 25.0330, 3.3770

Conversions

Conversions Part 2

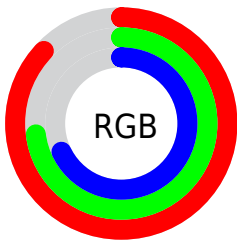
Format	Color
R _Y B	221, 191, 173
Decimal	14531245
CIE Lab	78.17, 10.54, 11.24
CIE LCh	78, 15.406, 46.845
Yxy	53.5071, 0.3534, 0.3443
Android (android.graphics.Color)	4292721325 (0xFFDDBAAD)
YUV	194.9830, -10.8376, 22.8169
Hunter-Lab	73.1485, 6.0112, 13.1247

Details

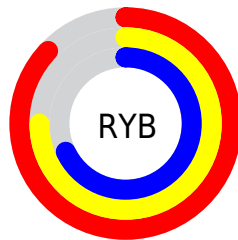
The Yxy color **53.5071, 0.3534, 0.3443** is a light color, and the websafe version is hex **FFCCCC**. A complement of this color would be **59.2265, 0.2794, 0.3132**, and the grayscale version is **54.6191, 0.3127, 0.3290**.

A 20% lighter version of the original color is **90.3657, 0.3300, 0.3428**, and **26.1549, 0.3637, 0.3478** is the 20% darker color. If you saturate the color by 10%, you get **46.3099, 0.3780, 0.3518**, and if you desaturate by 10%, it is **61.6169, 0.3327, 0.3370**.

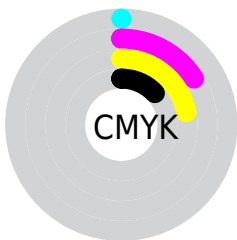
Distribution



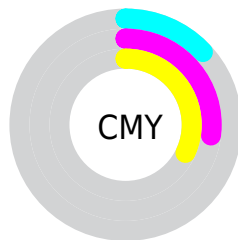
- Red (87%)
- Green (73%)
- Blue (68%)



- Red (87%)
- Yellow (75%)
- Blue (68%)



- Cyan (0%)
- Magenta (16%)
- Yellow (22%)
- Black (13%)




- Cyan (13%)
- Magenta (27%)
- Yellow (32%)

Brightness & Saturation Gradients

These gradients show how the Yxy color 53.5071, 0.3534, 0.3443 changes by changing the brightness by 10 percent. The first figure shows a shift by +10% for each color and the second figure -10%.


Similar to the brightness gradients but the following saturation gradients show a change of the Yxy color 53.5071, 0.3534, 0.3443 by changing the saturation by 10% instead.

 53.5071, 0.3534,
0.3443

 53.5071, 0.3534,
0.3443


400.2276, 0.3334,
0.3371

 38.2077, 0.3583,
0.3459


 95.3501, 0.3462,
0.3418

 26.1440, 0.3645,
0.3480


122.6626, 0.3435,
0.3408

 16.9314, 0.3727,
0.3505


154.7483, 0.3412,
0.3400

 10.1856, 0.3839,
0.3538

191.9914, 0.3392,
0.3393

 5.5222, 0.4002,
0.3582

234.7766, 0.3374,
0.3387

 2.5568, 0.4258,
0.3641

283.4881, 0.3359,

 0.9050, 0.5098,

0.3381

0.4017

338.5103, 0.3346,
0.3376

0.0000, 1.0000,
0.0000

0.0000, 0.0000,
0.0000

53.5071, 0.3534,
0.3443

53.5071, 0.3534,
0.3443

46.3099, 0.3780,
0.3518

61.6169, 0.3327,
0.3370

39.9858, 0.4068,
0.3592

70.6626, 0.3154,
0.3301

34.5029, 0.4400,
0.3659

80.6758, 0.3009,
0.3238

29.8245, 0.4768,
0.3709

91.2637, 0.2922,
0.3244

■ 25.9114, 0.5154,
0.3731

■ 94.1116, 0.2923,
0.3289

■ 22.7203, 0.5526,
0.3714

■ 20.2034, 0.5844,
0.3653

■ 18.5823, 0.6050,
0.3578

Harmonies

Analogous

The Analogous color harmony consists of three colors that are next to each other on the color wheel.



53.5071, 0.3458, 0.3269



53.5071, 0.3534, 0.3443



53.5071, 0.3497, 0.3585

Triad

The Triadic color harmony groups three colors that are evenly spaced from another and form a triangle on the color wheel.



53.5071, 0.3534, 0.3443



53.5071, 0.2959, 0.3486



53.5071, 0.2893, 0.2945

Complementary

The Complementary color scheme is a pair of colors which are on the opposite of each other on the color wheel.



53.5071, 0.3534, 0.3443



59.2265, 0.2794, 0.3132

Split Complementary

Split-complementary colors differ from the complementary color scheme. The scheme consists of three colors, the original color and two neighbors of the complement color.



53.5071, 0.2768, 0.2989



53.5071, 0.3534, 0.3443



53.5071, 0.2806, 0.3298

Square

The Square scheme is like the rectangle color scheme, but the four colors are evenly spaced on the color wheel.



53.5071, 0.3534, 0.3443



53.5071, 0.3161, 0.3618



53.5071, 0.2737, 0.3116



53.5071, 0.3083, 0.2988

Rectangle

The Rectangle color scheme consists of four colors that form a rectangle on the color wheel.



53.5071, 0.3534, 0.3443



53.5071, 0.3414, 0.3641



53.5071, 0.2737, 0.3116



53.5071, 0.2842, 0.2950

Sweetspot

The Sweet Spot groups the original color and five complimentary colors.



53.5095, 0.3534, 0.3443



90.8756, 0.3243, 0.3337



49.8321, 0.3257, 0.2889



19.2893, 0.3253, 0.3342



0.0000, 0.0000, 0.0000



21.4041, 0.3127, 0.3290

Same Dimension

The Same Dimension uses a secret algorithm to generate beautiful new colors.



53.5095, 0.3534, 0.3443



69.3726, 0.3640, 0.3477



64.3855, 0.3478, 0.3710



13.6219, 0.3285, 0.3354



10.9566, 0.6023, 0.3599



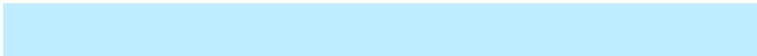
0.8518, 0.5700, 0.3856

Inverse Universe

The Inverse Universe completely reimagines the original color for something new.



59.2265, 0.2794, 0.3132



78.6035, 0.2727, 0.3095



48.4787, 0.2773, 0.2831



14.2025, 0.2982, 0.3225



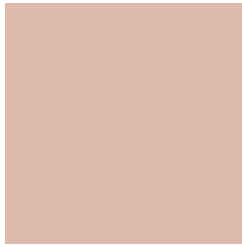
18.0773, 0.1998, 0.2391



1.3110, 0.2043, 0.2555

Previews

White Background



This preview shows how the Yxy color 53.5071, 0.3534, 0.3443 looks on a white background.

Color Contrast Check

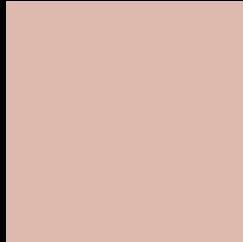
Large Text (above 18pt) WCAG AA × Fail

Any Text WCAG AA × Fail

Large Text (above 18pt) WCAG AAA × Fail

Any Text WCAG AAA × Fail

Black Background



This preview shows how the Yxy color 53.5071, 0.3534, 0.3443 looks on a black background.

Color Contrast Check

Large Text (above 18pt) WCAG AA ✓ Pass

Any Text WCAG AA ✓ Pass

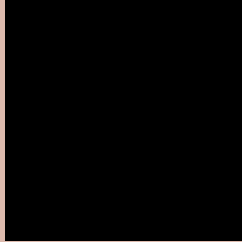
Large Text (above 18pt) WCAG AAA ✓ Pass

Any Text WCAG AAA ✓ Pass

If you want to check with other color combinations, try the [Color Contrast Checker](#).

Yxy 53.5071, 0.3534, 0.3443

Background



This preview shows how black text looks on a background with the Yxy color 53.5071, 0.3534, 0.3443.



This preview shows how white text looks on a background with the Yxy color 53.5071, 0.3534, 0.3443.

Color Blindness Simulation

Color vision deficiency is a very complex topic, and I could not describe the different causes any better than Wikipedia does, so if you want to learn more, you should check out their [article about color blindness](#).

Dichromacy



Original Color

53.5071, 0.3534, 0.3443

Protanopia

53.7318, 0.3316, 0.3487

Deuteranopia

53.7734, 0.3523, 0.3455



Tritanopia

53.3344, 0.3366, 0.3120

Trichromacy



Original Color

53.5071, 0.3534, 0.3443

Protanomaly

53.3714, 0.3388, 0.3460

Deuteranomaly

53.7734, 0.3523, 0.3455

Tritanomaly

53.1858, 0.3431, 0.3233

Monochromacy



Original Color

53.5071, 0.3534, 0.3443

Achromatopsia

54.5724, 0.3127, 0.3290

Achromatomaly

54.1245, 0.3264, 0.3351

CSS Examples

Text

The CSS property to change the color of the text to Yxy 53.5071, 0.3534, 0.3443 is called "color". The color property can be set on classes, ids or directly on the HTML element.

This example shows how text in the color `rgb(221, 186, 173)` looks like.

```
.text, #text, p{  
    color:rgb(221, 186, 173)  
}
```

If you want to add a text shadow in that color use the text-shadow property, you can generate a text shadow directly with our [CSS Text Shadow Generator](#).

Here you see how black text with a 4 pixel rgb(221, 186, 173) colored shadow looks like.

```
.shadow{ text-shadow: 4px 4px 2px rgb(221, 186, 173) }
```

Border

The CSS property to change the border of an element to Yxy 53.5071, 0.3534, 0.3443 is called "border". The border property can be set on classes, ids or directly on the HTML element.

This example shows the color as border, it can be applied via the CSS property "border" or "border-color".

```
.border, #border, table{ border:4px solid rgb(221, 186, 173) }
```

If only the border color should be changed use the property `border-color`.

```
.border{ border-color:rgb(221, 186, 173) }
```

If you want to add a box shadow in that color use:

Here you see how a box with a 4 pixel `rgb(221, 186, 173)` colored shadow looks like.

```
.boxshadow{ -moz-box-shadow:4px 4px 4px 4px rgb(221, 186, 173); -webkit-box-shadow:4px 4px 4px 4px rgb(221, 186, 173); box-shadow:4px 4px 4px 4px rgb(221, 186, 173) }
```


Background

The CSS property to change the background color of an element to Yxy 53.5071, 0.3534, 0.3443 is called "background". The background property can be set on classes, ids or directly on the HTML element.

```
.background, #background, body{  
background: rgb(221, 186, 173) }
```

If only the background color should be changed can be used:

```
.background{ background-color: rgb(221,  
186, 173) }
```

This example shows the color as background, it is applied via the CSS property "background".

To optimize and compress your CSS code, you can use our [online CSS compressor and optimizer](#) based on csstidy. If you want to create a linear or radial gradient as background or border, check our [CSS Gradient Generator](#).

Hey! You found this booklet interesting? Support Converting Colors with the new Membership Option!

The pro membership hides all ads, plus gives you double the colors in the color bucket, and more awesome pro features!

[Learn more, Memberships starting at \\$2.50/m!](#)

**Follow me
on Twitter!**

@ConvertingColor